

NEW Adjustable U-Clamps

New Adjustable U-Clamps are designed for use with CRL Z-Clamps to create a versatile barrier system. Easily attach them to existing vertical surfaces by simply sliding the clamping mechanism to the desired location and tightening screws. No drilling or permanent installation is required. Adjustable U-Clamps are compatible with Z-Clamps that accommodate 1/4", 5/16", or 3/8" thick extension panels, and are offered in round and square profiles.

Product Features

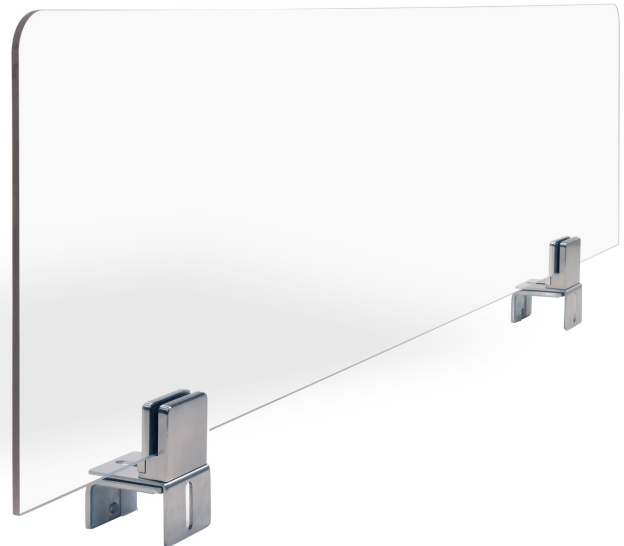
- Smart 2-way design accommodates 1-1/2" to 4" wide surface thicknesses
- Frameless design provides unobstructed views
- No drilling required
- Durable stainless steel construction
- Provides up to 40" extension to divider height, not to exceed 72" overall



*Shown with Round Z-Clamp**

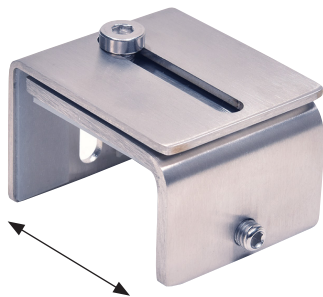


*Shown with Square Z-Clamp**

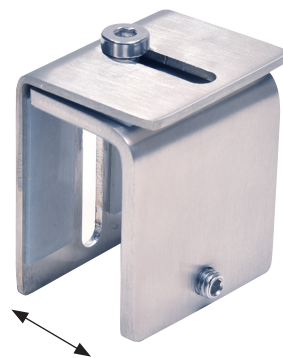
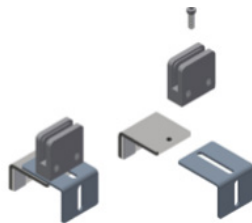


*Sold separately

PSCV1BS: Easily Configure into Two Sizes



configuration "A"



configuration "B"



Compatible Z-Series Clamps (Sold Separately)

CAT. NO.	SHAPE	FINISH	GLASS/ACRYLIC THICKNESS
Z506BS	Round	Brushed Stainless	1/4" to 5/16" (6 to 8 mm)
Z510BS	Round	Brushed Stainless	3/8" (10 mm)
Z512BS	Round	Brushed Stainless	1/2" to 9/16" (12 to 13.52 mm)
Z906BS	Square	Brushed Stainless	1/4" to 5/16" (6 to 8 mm)
Z910BS	Square	Brushed Stainless	3/8" (10 mm)
Z912BS	Square	Brushed Stainless	1/2" to 9/16" (12 to 13.52 mm)

Available Acrylic Sizes (Sold Separately)*

CAT. NO.	WIDTH	HEIGHT	NOTCH	THICKNESS
PBA1	23-5/8" (600 mm)	31-5/8" (803 mm)	---	1/4" (6 mm)
PBA2N	30" (762 mm)	40" (1016 mm)	10" x 6" (254 x 152 mm)	3/8" (10 mm)
PBA10	36" (914 mm)	12" (305 mm)	---	1/4" (6 mm)
PBA8	36" (914 mm)	23-5/8" (600 mm)	---	1/4" (6 mm)
PBA9	47-1/2" (1206 mm)	12" (305 mm)	---	1/4" (6 mm)
PBA5	47-1/2" (1206 mm)	23-5/8" (600 mm)	---	1/4" (6 mm)
PBA6	47-1/2" (1206 mm)	30" (762 mm)	---	1/4" (6 mm)
PBA7	47-1/2" (1206 mm)	35-3/4" (908 mm)	---	1/4" (6 mm)

*Panels have 1/2" (12 mm) Radius Corners

