



CATSER_08_22_ZD_AVDV4365

SERENITY SERIES

SLIDING DOOR SYSTEM
INCLUDES NEW FINISH
BRUSHED BRASS PVD

SERENITY SERIES SLIDING DOOR SYSTEM



Deluxe 180 Degree Kit

- Constructed from stainless steel
- Specially designed roller bearings for quiet door movement
- For use with 10 mm toughened glass panels - Not included
- Optional return panel track holder available separately
- Available in 4 popular finishes

Specifications:

Glass Thickness: 10 mm - Not Included

Material: Stainless Steel

Maximum Door Size: Do Not Exceed Either 762 mm Wide or 40 kg

Glass Fabrication: Holes Required in Both Door and Fixed Panel
(see crlaurence.com/shower-sliders for details)

DELUXE 180 DEGREE KIT

CAT. NO.	COLOUR
AUSER78PS	Polished Stainless Steel
AUSER78BS	Brushed Stainless Steel
AUSER78MBL	Matt Black
AUSER78BB	Brushed Brass PVD

Each Kit Contains:



Track Holder
Fittings for Wall



Door Stoppers



Track Holder Fittings
for Fixed Panels



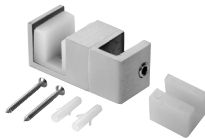
Rollers



Thru-Glass Pull



L-Seal Clear Jamb



Door Guide



2m Header Bar; Low Profile
30mm Height

SERENITY SERIES SLIDING DOOR SYSTEM ACCESSORIES

Replacement Roller

- Replacement for Roller Supplied in AUSER78 Deluxe Serenity Sliding System
- Sold Individually for Replacement Purposes
- Available in 4 Popular Finishes



REPLACEMENT ROLLER

CAT. NO.	COLOUR
AUSERNR1PS	Polished Stainless Steel
AUSERNR1BS	Brushed Stainless Steel
AUSERNR1MBL	Matt Black
AUSERNR1BB	Brushed Brass PVD

Track Connector

- Unique System with Rollers Above the Header Support Bar
- Specially Designed Roller Bearings Allow Easy Opening and Closing of Door
- Stainless Steel Construction
- Available in 4 Popular Finishes



TRACK CONNECTOR

CAT. NO.	COLOUR
AUSERFP2PS	Polished Stainless Steel
AUSERFP2BS	Brushed Stainless Steel
AUSERFP2MBL	Matt Black
AUSERFP2BB	Brushed Brass PVD

Adjustable Height Track Holder Fitting for Wall

- Allows Vertical Wall Mount Adjustment for Header Bar
- Stainless Steel Construction
- Available in 4 popular finishes



ADJUSTABLE HEIGHT TRACK HOLDER

CAT. NO.	COLOUR
AUSERAHW2PS	Polished Stainless Steel
AUSERAHW2BS	Brushed Stainless Steel
AUSERAHW2MBL	Matt Black
AUSERAHW2BB	Brushed Brass PVD

Replacement Door Stopper

- Replacement for Door Stopper Supplied in AUSER78 Deluxe Serenity Sliding System
- Sold Individually for Replacement Purposes
- Available in 4 Popular Finishes



REPLACEMENT DOOR STOPPER

CAT. NO.	COLOUR
AUSERNS1PS	Polished Stainless Steel
AUSERNS1BS	Brushed Stainless Steel
AUSERNS1MBL	Matt Black
AUSERNS1BB	Brushed Brass PVD

Thru-Glass Pull

- For Optional Use with Our Serenity Sliding System
- Can Be Used with Other Sliders
- Use Toughened Glass
- Available in 4 Popular Finishes

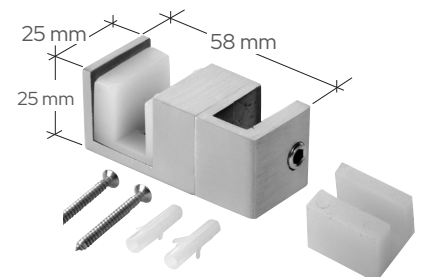


THRU-GLASS PULL

CAT. NO.	COLOUR
AUSERNHP2PS	Polished Stainless Steel
AUSERNHP2BS	Brushed Stainless Steel
AUSERNHP2MBL	Matt Black
AUSERNHP2BB	Brushed Brass PVD

Replacement Door Guide

- Attaches to Fixed Panel
- Use Toughened Glass
- For Use with Either 10 or 8 mm Thick Toughened Glass
- Available in 4 Popular Finishes



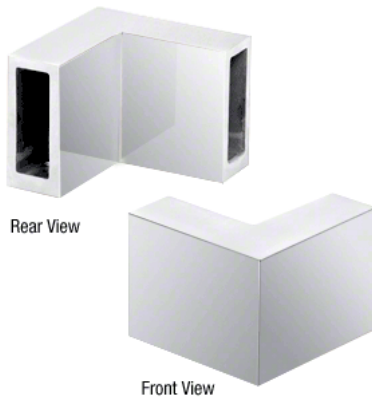
REPLACEMENT DOOR GUIDE

CAT. NO.	COLOUR
AUSERUG2PS	Polished Stainless Steel
AUSERUG2BS	Brushed Stainless Steel
AUSERUG2MBL	Matt Black
AUSERUG2BB	Brushed Brass PVD

SERENITY SERIES SLIDING DOOR SYSTEM ACCESSORIES

Corner Rail Bracket

- Allows Corner Connection of Header Bar to Create Corner Double Sliding Doors
- Stainless Steel Construction
- Available in 3 popular finishes

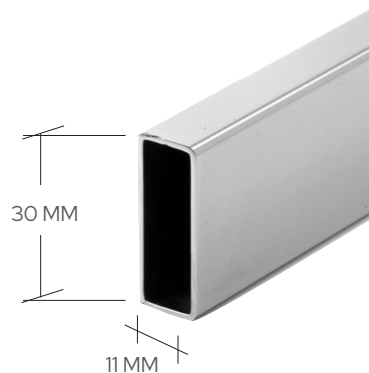


CORNER RAIL BRACKET

CAT. NO.	COLOUR
SERC2PS	Polished Stainless Steel
SERC2BS	Brushed Stainless Steel
SERC2MBL	Matt Black

Header Support Bar Only

- Stainless Steel Construction
- 2 & 2.7 Metre Lengths
- Available in 4 Popular Finishes

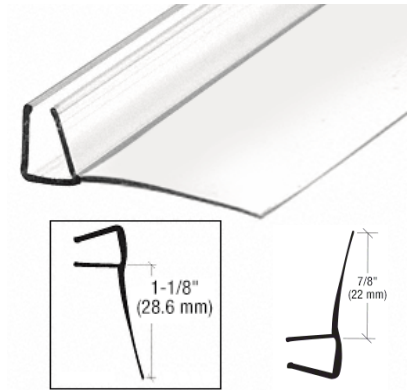


HEADER SUPPORT BAR ONLY

CAT. NO.	BAR LENGTH	COLOUR
AUSERH2PS	2000 mm	Polished Stainless
AUSERH2BS	2000 mm	Brushed Stainless
AUSERH2MBL	2000 mm	Matt Black
AUSERH2BB	2000 mm	Brushed Brass PVD
AUSERH27PS	2700 mm	Polished Stainless
AUSERH27BS	2700 mm	Brushed Stainless
AUSERH27MBL	2700 mm	Matt Black

90 Degree Clear Poly U-Channel With Fin For 10 mm Glass

- Creates a Water Seal Between the Glass Sliding Door and Fixed Panel.
- Optional 22 mm or 28 mm Flexible Leg

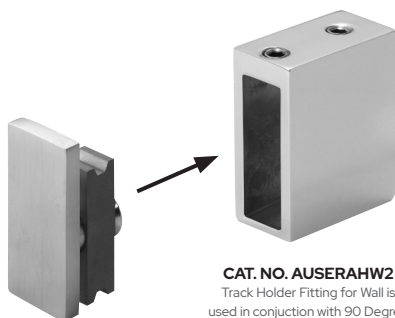


90 DEGREE CLEAR POLY U-CHANNEL

CAT. NO.	LEG LENGTH	LENGTH
PC1090	22 mm	2410 mm
PCSER78	28 mm	2410 mm

90 Degree Accessory Kit

- Connects to Wall Fitting for 90 Degree Installations
- Use Monolithic Tempered Glass
- Piece Includes 38 mm Long x 19 mm Wide Block with Screw Attached
- Choice of Polished Stainless, Brushed Stainless, Matt Black and Brushed Brass PVD



Accessory Kit for 90 Degree Return is used in conjunction with Track Holder Fitting for Wall (sold separately, see right)

Track Holder Fitting for Wall is used in conjunction with 90 Degree Accessory Kit (sold separately, see left)

90 DEGREE ACCESSORY KIT

CAT. NO.	COLOUR
AUSER90PS	Polished Stainless Steel
AUSER90BS	Brushed Stainless Steel
AUSER90MBL	Matt Black
AUSER90BB	Brushed Brass PVD

