



CRL HANDRAIL SYSTEMS

CATHR_06_25_ZD

38MM DIAMETER HANDRAIL

38mm Diameter Tube

- Made of 316 stainless steel
- 6000mm long
- Available in Brushed and Polished Stainless Steel
- 38mm diameter
- 1.6mm Wall Thickness



38MM DIAMETER TUBE	
CAT. NO.	FINISH
HR38BS	Brushed Stainless Steel
HR38PS	Polished Stainless Steel

Adjustable Elbow Connector

- Made of 316 stainless steel
- Available in Brushed and Polished Stainless Steel
- Suited for 38mm diameter tubing
- 32629 Metal contact cement and 7649 Primer can be used for a secure and permanent bond



ADJUSTABLE ELBOW CONNECTOR	
CAT. NO.	FINISH
HR38ADJBS	Brushed Stainless Steel
HR38ADJPS	Polished Stainless Steel

Radius 90 Degree Connector

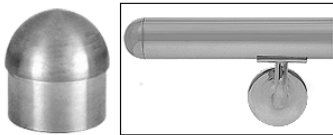
- Made of 316 stainless steel
- Available in Brushed and Polished Stainless Steel
- Suited for 38mm diameter tubing
- 32629 Metal contact cement and 7649 Primer can be used for a secure and permanent bond



RADIUS 90 DEGREE CONNECTOR	
CAT. NO.	FINISH
HR38CBS	Brushed Stainless Steel
HR38CPS	Polished Stainless Steel

Domed End Cap

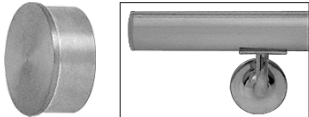
- Made of 316 stainless steel
- Available in Brushed and Polished Stainless Steel
- Suited for 38mm diameter tubing
- 32629 Metal contact cement and 7649 Primer can be used for a secure and permanent bond



DOMED END CAP	
CAT. NO.	FINISH
HR38DBS	Brushed Stainless Steel
HR38DPS	Polished Stainless Steel

Flat End Cap

- Made of 316 stainless steel
- Available in Brushed and Polished Stainless Steel
- Suited for 38mm diameter tubing
- 32629 Metal contact cement and 7649 Primer can be used for a secure and permanent bond



FLAT END CAP	
CAT. NO.	FINISH
HR38FPS	Polished Stainless Steel

90 Degree Connector

- Made of 316 stainless steel
- Available in Brushed and Polished Stainless Steel
- Suited for 38mm diameter tubing
- 32629 Metal contact cement and 7649 Primer can be used for a secure and permanent bond

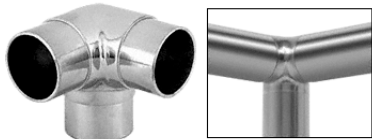


90 DEGREE CONNECTOR	
CAT. NO.	FINISH
HR38HBS	Brushed Stainless Steel
HR38HPS	Polished Stainless Steel

38MM DIAMETER HANDRAIL

3 Way 90 Degree Connector

- Made of 316 stainless steel
- Available in Brushed and Polished Stainless Steel
- Suited for 38mm diameter tubing
- 32629 Metal contact cement and 7649 Primer can be used for a secure and permanent bond



3 WAY 90 DEGREE CONNECTOR	
CAT. NO.	FINISH
HR38JBS	Brushed Stainless Steel
HR38JPS	Polished Stainless Steel

Flush Tee Connector

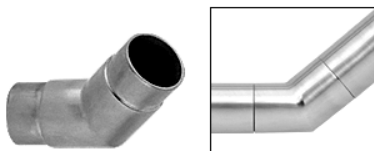
- Made of 316 stainless steel
- Available in Brushed and Polished Stainless Steel
- Suited for 38mm diameter tubing
- 32629 Metal contact cement and 7649 Primer can be used for a secure and permanent bond



FLUSH TEE CONNECTOR	
CAT. NO.	FINISH
HR38KBS	Brushed Stainless Steel
HR38KPS	Polished Stainless Steel

Mitered 135 Degree Connector

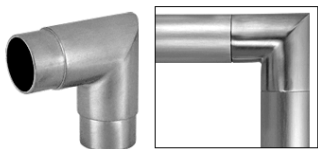
- Made of 316 stainless steel
- Available in Brushed and Polished Stainless Steel
- Suited for 38mm diameter tubing
- 32629 Metal contact cement and 7649 Primer can be used for a secure and permanent bond



MITERED 135 DEGREE CONNECTOR	
CAT. NO.	FINISH
HR38MBS	Brushed Stainless Steel
HR38MPS	Polished Stainless Steel

Mitered 90 Degree Connector

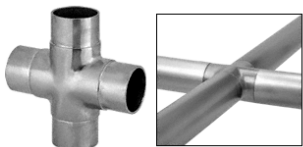
- Made of 316 stainless steel
- Available in Brushed and Polished Stainless Steel
- Suited for 38mm diameter tubing
- 32629 Metal contact cement and 7649 Primer can be used for a secure and permanent bond



MITERED 90 DEGREE CONNECTOR	
CAT. NO.	FINISH
HR38MCBS	Brushed Stainless Steel
HR38MCPS	Polished Stainless Steel

Flush Cross Connector

- Made of 316 stainless steel
- Available in Brushed and Polished Stainless Steel
- Suited for 38mm diameter tubing
- 32629 Metal contact cement and 7649 Primer can be used for a secure and permanent bond



FLUSH CROSS CONNECTOR	
CAT. NO.	FINISH
HR38NBS	Brushed Stainless Steel
HR38NPS	Polished Stainless Steel

Adjustable Flange

- Made of 316 stainless steel
- Available in Brushed and Polished Stainless Steel
- Suited for 38mm diameter tubing
- 32629 Metal contact cement and 7649 Primer can be used for a secure and permanent bond



ADJUSTABLE FLANGE	
CAT. NO.	FINISH
HR38PFBS	Brushed Stainless Steel
HR38PFPS	Polished Stainless Steel

38MM DIAMETER HANDRAIL

Rotating Connector

- Made of 316 stainless steel
- Available in Brushed and Polished Stainless Steel
- Suited for 38mm diameter tubing
- 32629 Metal contact cement and 7649 Primer can be used for a secure and permanent bond



ROTATING CONNECTOR	
CAT. NO.	FINISH
HR38ROTBS	Brushed Stainless Steel
HR38ROTBS	Polished Stainless Steel

Flush Angle End Cap

- Made of 316 stainless steel
- Available in Brushed and Polished Stainless Steel
- Suited for 38mm diameter tubing
- 32629 Metal contact cement and 7649 Primer can be used for a secure and permanent bond



FLUSH ANGLE END CAP	
CAT. NO.	FINISH
HR38RBS	Brushed Stainless Steel
HR38RPS	Polished Stainless Steel

Full Flange

- Made of 316 stainless steel
- Available in Brushed and Polished Stainless Steel
- Suited for 38mm diameter tubing
- 32629 Metal contact cement and 7649 Primer can be used for a secure and permanent bond



FULL FLANGE	
CAT. NO.	FINISH
HR38YBS	Brushed Stainless Steel
HR38YPS	Polished Stainless Steel



50MM DIAMETER HANDRAIL

50mm Diameter Tube

- Made of 316 stainless steel
- 6000mm long
- Available in Brushed and Polished Stainless Steel
- 50mm diameter
- 1.6mm Wall Thickness



50MM DIAMETER TUBE	
CAT. NO.	FINISH
HR50PS	Polished Stainless Steel

Adjustable Connector

- Made of 316 stainless steel
- Available in Brushed and Polished Stainless Steel
- Suited for 50mm diameter tubing
- 32629 Metal contact cement and 7649 Primer can be used for a secure and permanent bond



ADJUSTABLE CONNECTOR	
CAT. NO.	FINISH
HR50ADJBS	Brushed Stainless Steel
HR50ADJPS	Polished Stainless Steel

90 Degree Radius Connector

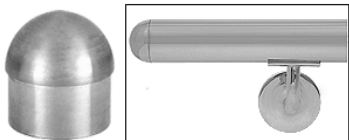
- Made of 316 stainless steel
- Available in Brushed and Polished Stainless Steel
- Suited for 50mm diameter tubing
- 32629 Metal contact cement and 7649 Primer can be used for a secure and permanent bond



90 DEGREE RADIUS CONNECTOR	
CAT. NO.	FINISH
HR50CBS	Brushed Stainless Steel
HR50CPS	Polished Stainless Steel

Domed End Cap

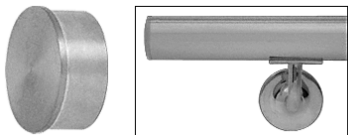
- Made of 316 stainless steel
- Available in Brushed and Polished Stainless Steel
- Suited for 50mm diameter tubing
- 32629 Metal contact cement and 7649 Primer can be used for a secure and permanent bond



DOMED END CAP	
CAT. NO.	FINISH
HR50DBS	Brushed Stainless Steel
HR50DPS	Polished Stainless Steel

Flat End Cap

- Made of 316 stainless steel
- Available in Brushed and Polished Stainless Steel
- Suited for 50mm diameter tubing
- 32629 Metal contact cement and 7649 Primer can be used for a secure and permanent bond



FLAT END CAP	
CAT. NO.	FINISH
HR50FPS	Polished Stainless Steel

90 Degree Connector

- Made of 316 stainless steel
- Available in Brushed and Polished Stainless Steel
- Suited for 50mm diameter tubing
- 32629 Metal contact cement and 7649 Primer can be used for a secure and permanent bond

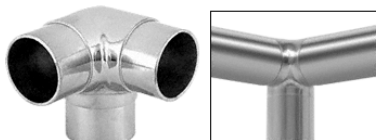


90 DEGREE CONNECTOR	
CAT. NO.	FINISH
HR50HBS	Brushed Stainless Steel
HR50HPS	Polished Stainless Steel

50MM DIAMETER HANDRAIL

3 Way 90 Degree Connector

- Made of 316 stainless steel
- Available in Brushed and Polished Stainless Steel
- Suited for 50mm diameter tubing
- 32629 Metal contact cement and 7649 Primer can be used for a secure and permanent bond



3 WAY 90 DEGREE CONNECTOR

CAT. NO.	FINISH
HR50JBBS	Brushed Stainless Steel
HR50JBPS	Polished Stainless Steel

Flush Tee Connector

- Made of 316 stainless steel
- Available in Brushed and Polished Stainless Steel
- Suited for 50mm diameter tubing
- 32629 Metal contact cement and 7649 Primer can be used for a secure and permanent bond

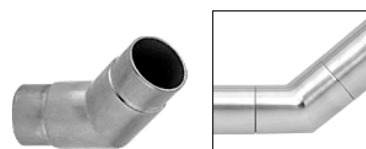


FLUSH TEE CONNECTOR

CAT. NO.	FINISH
HR50KBBS	Brushed Stainless Steel
HR50KBPS	Polished Stainless Steel

Mitered 135 Degree Connector

- Made of 316 stainless steel
- Available in Brushed and Polished Stainless Steel
- Suited for 50mm diameter tubing
- 32629 Metal contact cement and 7649 Primer can be used for a secure and permanent bond

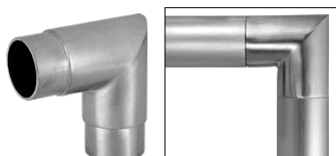


MITERED 135 DEGREE CONNECTOR

CAT. NO.	FINISH
HR50MPBS	Brushed Stainless Steel
HR50MPPS	Polished Stainless Steel

Mitered 90 Degree Connector

- Made of 316 stainless steel
- Available in Brushed and Polished Stainless Steel
- Suited for 50mm diameter tubing
- 32629 Metal contact cement and 7649 Primer can be used for a secure and permanent bond

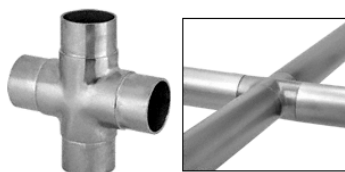


MITERED 90 DEGREE CONNECTOR

CAT. NO.	FINISH
HR50MCBS	Brushed Stainless Steel
HR50MCPS	Polished Stainless Steel

Flush Cross Connector

- Made of 316 stainless steel
- Available in Brushed and Polished Stainless Steel
- Suited for 50mm diameter tubing
- 32629 Metal contact cement and 7649 Primer can be used for a secure and permanent bond



FLUSH CROSS CONNECTOR

CAT. NO.	FINISH
HR50NBBS	Brushed Stainless Steel
HR50NBPS	Polished Stainless Steel

Adjustable Flange

- Made of 316 stainless steel
- Available in Brushed and Polished Stainless Steel
- Suited for 50mm diameter tubing
- 32629 Metal contact cement and 7649 Primer can be used for a secure and permanent bond



ADJUSTABLE FLANGE

CAT. NO.	FINISH
HR50PFBS	Brushed Stainless Steel
HR50PFPS	Polished Stainless Steel

50MM DIAMETER HANDRAIL

Rotating Connector

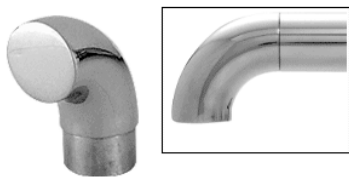
- Made of 316 stainless steel
- Available in Brushed and Polished Stainless Steel
- Suited for 50mm diameter tubing
- 32629 Metal contact cement and 7649 Primer can be used for a secure and permanent bond



ROTATING CONNECTOR	
CAT. NO.	FINISH
HR50ROTBS	Brushed Stainless Steel
HR50ROTPS	Polished Stainless Steel

Flush Angle End Cap

- Made of 316 stainless steel
- Available in Brushed and Polished Stainless Steel
- Suited for 50mm diameter tubing
- 32629 Metal contact cement and 7649 Primer can be used for a secure and permanent bond



FLUSH ANGLE END CAP	
CAT. NO.	FINISH
HR50RBS	Brushed Stainless Steel
HR50RPS	Polished Stainless Steel

Cut Flange

- Made of 316 stainless steel
- Available in Brushed and Polished Stainless Steel
- Suited for 50mm diameter tubing
- 32629 Metal contact cement and 7649 Primer can be used for a secure and permanent bond



CUT FLANGE	
CAT. NO.	FINISH
HR50ZBS	Brushed Stainless Steel
HR50ZPS	Polished Stainless Steel



HANDRAIL BRACKETS

Adjustable Saddle Wall Mount Handrail Bracket

- Made of 316 stainless steel
- Suits 38mm or 50mm diameter tubing
- Adjustable Saddle
- Available in Brushed and Polished Stainless Steel
- Pushfit cover plate hides wall fixings
- Supplied with wall anchors, washers and rivets for installation



ADJUSTABLE SADDLE WALL MOUNT HANDRAIL BRACKET	
CAT. NO.	FINISH
HRBK1BS	Brushed Stainless Steel
HRBK1PS	Polished Stainless Steel

Wall Mount Handrail Bracket

- Made of 316 stainless steel
- Suits 38mm or 50mm diameter tubing
- Available in Brushed and Polished Stainless Steel
- Pushfit cover plate hides wall fixings
- Supplied with wall anchors, washers and rivets for installation



WALL MOUNT HANDRAIL BRACKET	
CAT. NO.	FINISH
HRBKWMBS	Brushed Stainless Steel
HRBKWMPS	Polished Stainless Steel
HRBKWMMBL	Matt Black

Glass Mount Handrail Bracket

- Made of 316 stainless steel
- Suits 38mm or 50mm diameter tubing
- Available in Brushed and Polished Stainless Steel
- Suited for 10mm - 13.52mm thick glass
- Supplied with washers and rivets for installation



GLASS MOUNT HANDRAIL BRACKET	
CAT. NO.	FINISH
HRBKGMBS	Brushed Stainless Steel
HRBKGMPS	Polished Stainless Steel
HRBKGMML	Matt Black

Adjustable Saddle Glass Mount Handrail Bracket

- Made of 316 stainless steel
- Suits 38mm or 50mm diameter tubing
- Adjustable Saddle
- Available in Brushed and Polished Stainless Steel
- Suited for 10mm - 13.52mm thick glass
- Supplied with washers and rivets for installation



ADJUSTABLE SADDLE GLASS MOUNT HANDRAIL BRACKET	
CAT. NO.	FINISH
HRBK4BS	Brushed Stainless Steel
HRBK4PS	Polished Stainless Steel

Wall Mount Handrail Bracket

- Made of 316 stainless steel
- Suits 38mm or 50mm diameter tubing
- Available in Brushed and Polished Stainless Steel
- 3 Hole countersunk wall fixing plate
- Supplied with wall anchors and rivets for installation



WALL MOUNT HANDRAIL BRACKET	
CAT. NO.	FINISH
HRBK5BS	Brushed Stainless Steel
HRBK5PS	Polished Stainless Steel

Adjustable Wall Mount Handrail Bracket

- Made of 316 stainless steel
- Suits 38mm or 50mm diameter tubing
- Adjustable saddle and arm height
- Available in Brushed and Polished Stainless Steel
- Pushfit cover plate hides wall fixings
- Supplied with wall anchors, washers and rivets for installation



ADJUSTABLE WALL MOUNT HANDRAIL BRACKET	
CAT. NO.	FINISH
HRBKWMADJBS	Brushed Stainless Steel
HRBKWMADJPS	Polished Stainless Steel
HRBKWMADJMBL	Matt Black

HANDRAIL BRACKETS

Adjustable Glass Mount Handrail Bracket

- Made of 316 stainless steel
- Suits 38mm or 50mm diameter tubing
- Adjustable saddle and arm height
- Available in Brushed and Polished Stainless Steel
- Suited for 10mm - 13.52mm thick glass
- Supplied with washers and rivets for installation



ADJUSTABLE GLASS MOUNT
HANDRAIL BRACKET

CAT. NO.	FINISH
HRBKGMADJBS	Brushed Stainless Steel
HRBKGMADJPS	Polished Stainless Steel
HRBKGMADJMBL	Matt Black

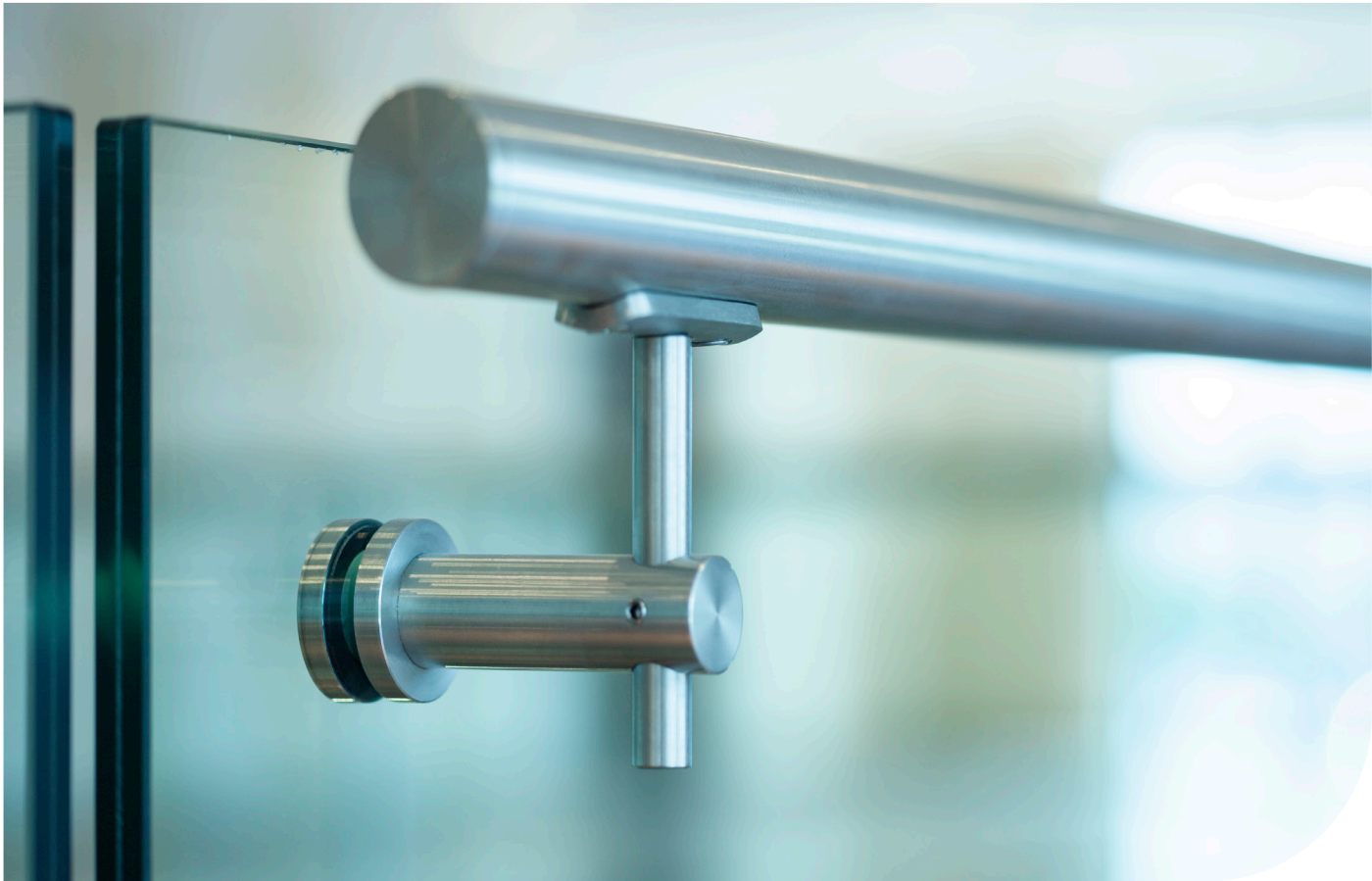
Flat Handrail Adapter Plate

- Flat handrail adapter plate designed for the HRBK331 & HRBK324 handrail brackets



FLAT HANDRAIL ADAPTER PLATE

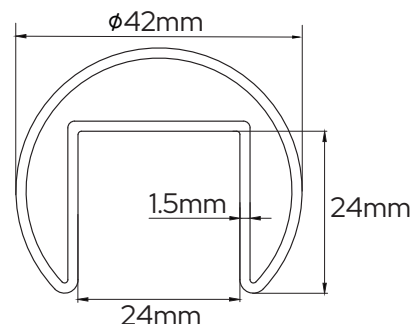
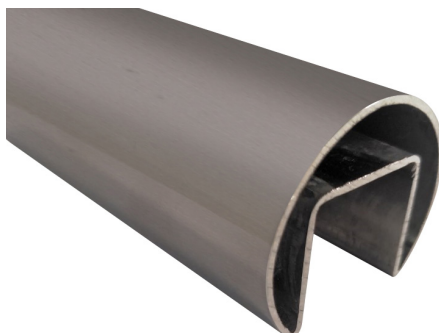
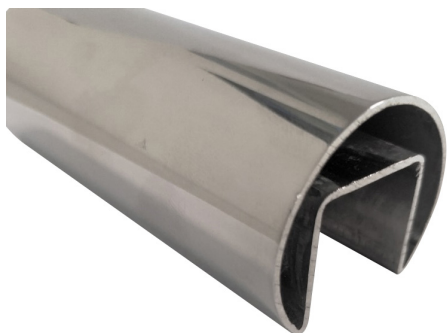
CAT. NO.	FINISH
HRBKFS01BS	Brushed Stainless Steel
HRBKFS01PS	Polished Stainless Steel



42MM ROUND STAINLESS STEEL CAP RAIL

CRL 42mm Round Stainless Steel Cap Rail creates a stylish glass railing system capable of accommodating 10mm to 21.52mm glass in the 24x24mm pocket. It features a low profile, sturdy design with an unobtrusive look. Stock lengths are 6000mm long and available in Brushed or Polished Stainless Steel Finishes. Modular connectors, corners and end caps are available, made in robust 316L stainless steel material.

42MM ROUND CAP RAIL - 6000MM LENGTHS



CAT. NO.	FINISHES
GR42BS	Brushed Stainless Steel
GR42PS	Polished Stainless Steel

42MM ROUND CAP RAIL 90° HORIZONTAL JOINER



CAT. NO.	FINISHES
GR42HBS	Brushed Stainless Steel
GR42HPS	Polished Stainless Steel

42MM ROUND CAP RAIL 90° VERTICAL JOINER



CAT. NO.	FINISHES
GR42VCBS	Brushed Stainless Steel
GR42VCPS	Polished Stainless Steel

42MM ROUND CAP RAIL ADJUSTABLE HORIZONTAL JOINER



CAT. NO.	FINISHES
GR42HADJBS	Brushed Stainless Steel
GR42HADJPS	Polished Stainless Steel

42MM ROUND CAP RAIL ADJUSTABLE VERTICAL JOINER



CAT. NO.	FINISHES
GR42VADJBS	Brushed Stainless Steel
GR42VADJPS	Polished Stainless Steel

42MM ROUND STAINLESS STEEL CAP RAIL

42MM ROUND CAP RAIL END CAP



CAT. NO.	FINISHES
GR42ECBS	Brushed Stainless Steel
GR42ECPS	Polished Stainless Steel

42MM ROUND CAP RAIL WALL MOUNT END CAP



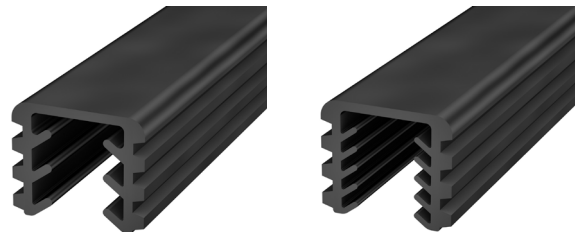
CAT. NO.	FINISHES
GR42WCBS	Brushed Stainless Steel
GR42WCPS	Polished Stainless Steel

42MM ROUND CAP RAIL 180° INLINE JOINER



CAT. NO.	FINISHES
GR42CBS	Brushed Stainless Steel
GR42CPS	Polished Stainless Steel

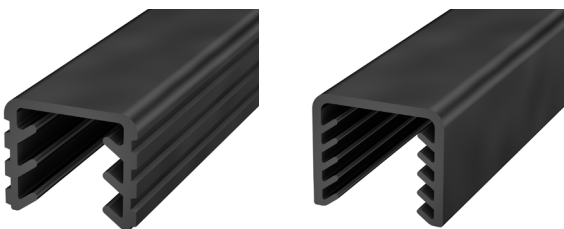
CAP RAIL VINYL INFILLS FOR 10 - 12.76MM GLASS



CAT. NO.	DESCRIPTION
ACR40V1012	Vinyl for 10 - 12mm Glass
ACR40V12127	Vinyl for 12 - 12.76mm Glass

* SOLD BY THE LINEAL METER

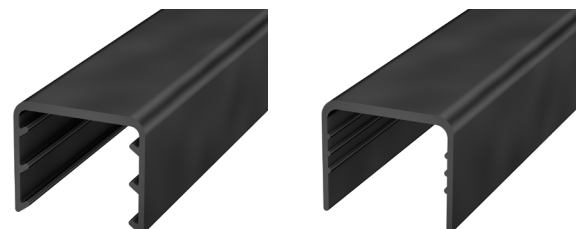
CAP RAIL VINYL INFILLS FOR 13.52 - 17.52MM GLASS



CAT. NO.	DESCRIPTION
ACR40V1315	Vinyl for 13.52 - 15mm Glass
ACR40V1517	Vinyl for 15 - 17.52mm Glass

* SOLD BY THE LINEAL METER

CAP RAIL VINYL INFILLS FOR 19 - 21.52MM GLASS



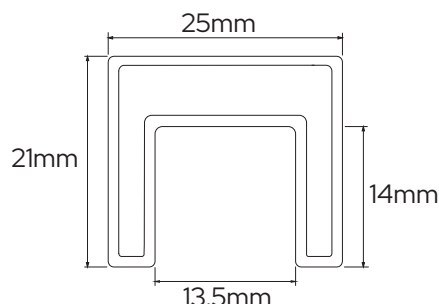
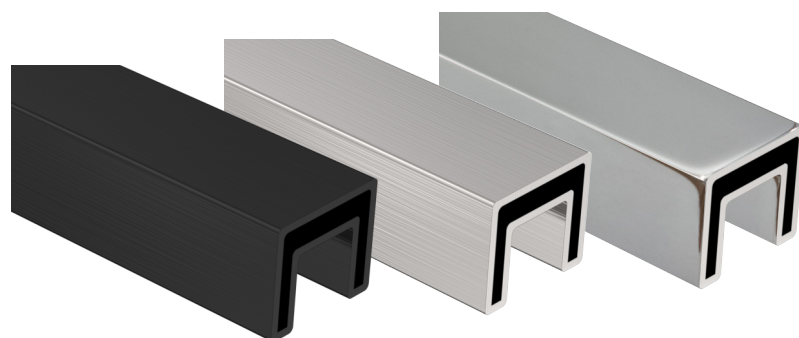
CAT. NO.	DESCRIPTION
ACR40V19	Vinyl for 19mm Glass
ACR40V2021	Vinyl for 20 - 21.52mm Glass

* SOLD BY THE LINEAL METER

25 X 21MM SQUARE STAINLESS STEEL CAP RAIL

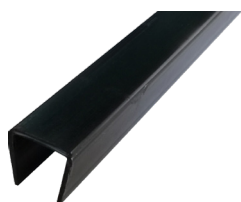
CRL Stainless Steel 25 x 21mm Square Cap Rail can easily create a stylish glass railing system, capable of accommodating 10mm or 12mm glass. It features a low profile design creating an unobtrusive look. Stock lengths are 5.8m and available in brushed stainless, polished stainless and matt black finishes. Corners, end caps and connectors are available and install easily with our 32629 Metal Contact Cement. Made in corrosion resistant 316L low carbon marine grade stainless steel.

25 X 21MM SQUARE CAP RAIL - 5800 MM LENGTHS



CAT. NO.	FINISHES
SLS25BS	Brushed Stainless Steel
SLS25PS	Polished Stainless Steel
SLS25MBL	Matt Black

RIGID VINYL AND SOFT RUBBER FOR 12MM GLASS



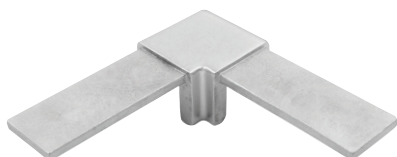
CAT. NO.	UNIT QUANTITY
SLS25RR12	Rigid Vinyl - 2.9m Lengths
SLG100	Soft Rubber - 10m Rolls

180° INLINE CONNECTOR SLEEVE



CAT. NO.	FINISHES
SLS25CBS	Brushed Stainless Steel
SLS25CPS	Polished Stainless Steel
SLS25CMBL	Matt Black

90° HORIZONTAL CORNER JOINER



CAT. NO.	FINISHES
SLS25HBS	Brushed Stainless Steel
SLS25HPS	Polished Stainless Steel
SLS25HMBL	Matt Black

ADJUSTABLE HORIZONTAL CORNER JOINER



CAT. NO.	FINISHES
SLS25HAJBS	Brushed Stainless Steel
SLS25HAJPS	Polished Stainless Steel
SLS25HAJMBL	Matt Black

25 X 21MM SQUARE STAINLESS STEEL CAP RAIL

ADJUSTABLE VERTICAL CORNER JOINER LEFT SWING



CAT. NO.	FINISHES
SLS25VAJLBS	Brushed Stainless Steel
SLS25VAJLPS	Polished Stainless Steel
SLS25VAJLBL	Matt Black

ADJUSTABLE VERTICAL CORNER JOINER RIGHT SWING



CAT. NO.	FINISHES
SLS25VAJRBS	Brushed Stainless Steel
SLS25VAJRPS	Polished Stainless Steel
SLS25VAJMBL	Matt Black

ADJUSTABLE VERTICAL JOINER



CAT. NO.	FINISHES
SLS25VAJBBS	Brushed Stainless Steel
SLS25VAJBPS	Polished Stainless Steel
SLS25VAJBMBL	Matt Black

WALL MOUNT END CAP



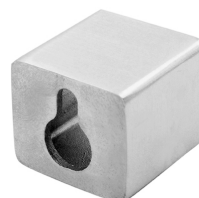
CAT. NO.	FINISHES
SLS25WCBS	Brushed Stainless Steel
SLS25WCPS	Polished Stainless Steel
SLS25WCMBL	Matt Black

WALL MOUNT ADJUSTABLE END CAP



CAT. NO.	FINISHES
SLS25WCADJBS	Brushed Stainless Steel
SLS25WCADJPS	Polished Stainless Steel
SLS25WCADJMBL	Matt Black

CONCEALED WALL MOUNT END CAP



CAT. NO.	FINISHES
SLS25CWCBS	Brushed Stainless Steel
SLS25CWCPS	Polished Stainless Steel
SLS25CWCMBL	Matt Black

END CAP



CAT. NO.	FINISHES
SLS25ECBS	Brushed Stainless Steel
SLS25ECPS	Polished Stainless Steel
SLS25ECMBL	Matt Black

METAL CONTACT CEMENT GLUE

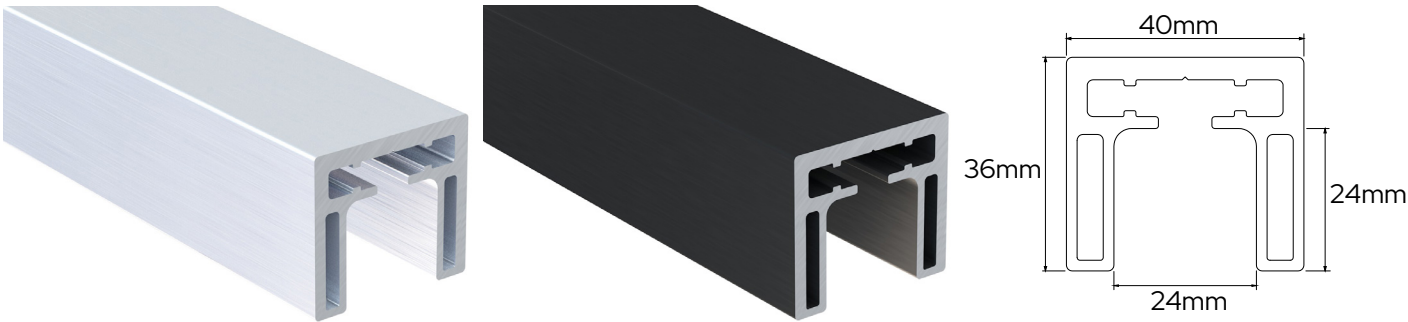


CAT. NO.	FINISHES
32629	CRL LOCTITE® METAL CEMENT
7649	CRL LOCTITE® 60 SECOND PRIMER FOR METAL CONTACT CEMENT

40MM X 36MM ALUMINIUM CAP RAIL

CRL Aluminium 40 x 36mm Square Cap Rail creates a stylish glass railing system capable of accommodating 10mm to 21.52mm glass. It features a low profile, sturdy design with an unobtrusive look. Stock lengths are 5.8m long and available in Silver Brushed Anodized or Black Brushed Anodized finish. Corners, end caps and connectors are easily installed with grub screws which can be tightened from underneath and or with the use of the TUBELOC 2680 Retaining Compound Glue. This feature combined with the ease of cutting aluminium makes the joins almost invisible after installation.

ALUMINIUM 40MM X 36MM CAP RAIL - 5800MM LENGTHS



CAT. NO.	FINISHES
ACR40SBA	Silver Brushed Anodized
ACR40BBA	Black Brushed Anodized

ALUMINIUM 40MM X 36MM 90° HORIZONTAL JOINER



CAT. NO.	UNIT QUANTITY
ACR40HJ	1

ALUMINIUM 40MM X 36MM 180° INLINE JOINER



CAT. NO.	UNIT QUANTITY
ACR40CJ	1

ALUMINIUM 40MM X 36MM ADJUSTABLE HORIZONTAL JOINER



CAT. NO.	UNIT QUANTITY
ACR40HAJ	1

ALUMINIUM 40MM X 36MM ADJUSTABLE VERTICAL JOINER



CAT. NO.	UNIT QUANTITY
ACR40VAJ	1

40MM X 36MM ALUMINIUM CAP RAIL

ALUMINIUM 40MM X 36MM CAP RAIL END CAP



CAT. NO.	FINISHES
ACR40ECSBA	Silver Brushed Anodized
ACR40ECBBA	Black Brushed Anodized

ALUMINIUM 40MM X 36MM CAP RAIL WALL MOUNT END CAP



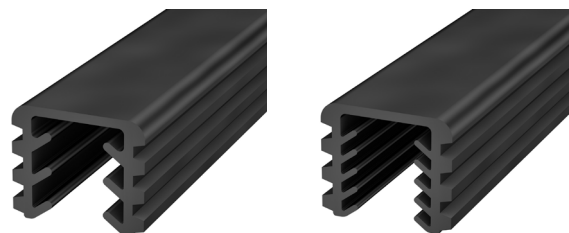
CAT. NO.	FINISHES
ACR40WCSBA	Silver Brushed Anodized
ACR40WCBBA	Black Brushed Anodized

TUBELOC 2680 RETAINING COMPOUND GLUE



CAT. NO.	UNIT QUANTITY
ACRGLUE	50 ML BOTTLE

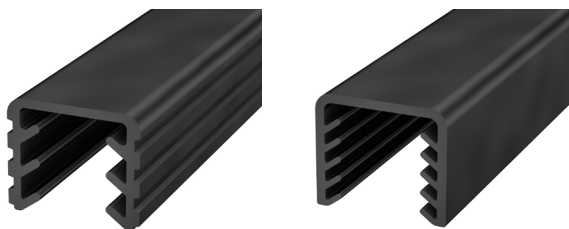
ALUMINIUM CAP RAIL VINYL INFILLS FOR 10 - 12.76MM GLASS



CAT. NO.	DESCRIPTION
ACR40V1012	Vinyl for 10 - 12mm Glass
ACR40V12127	Vinyl for 12 - 12.76mm Glass

* SOLD BY THE LINEAL METER

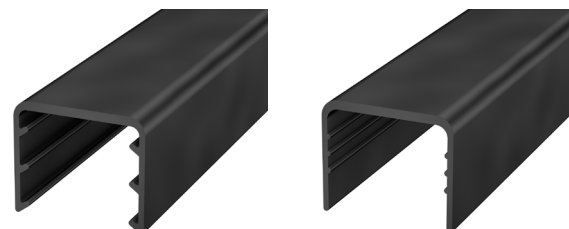
ALUMINIUM CAP RAIL VINYL INFILLS FOR 13.52 - 17.52MM GLASS



CAT. NO.	DESCRIPTION
ACR40V1315	Vinyl for 13.52 - 15mm Glass
ACR40V1517	Vinyl for 15 - 17.52mm Glass

* SOLD BY THE LINEAL METER

ALUMINIUM CAP RAIL VINYL INFILLS FOR 19 - 21.52MM GLASS



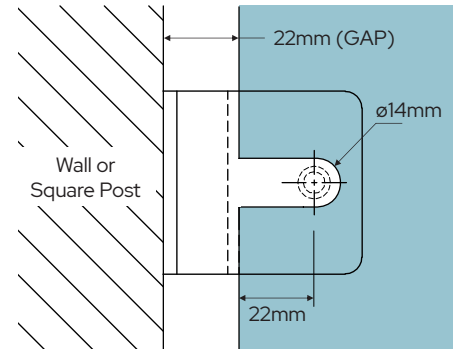
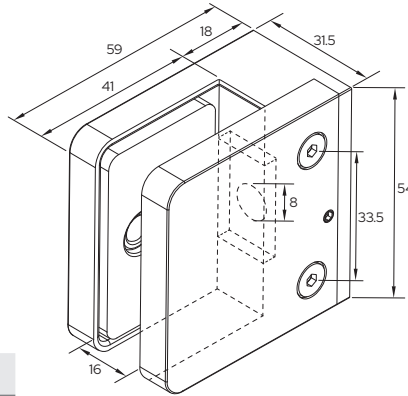
CAT. NO.	DESCRIPTION
ACR40V19	Vinyl for 19mm Glass
ACR40V2021	Vinyl for 20 - 21.52mm Glass

* SOLD BY THE LINEAL METER

Z-SERIES GLASS "D" CLAMPS - FRICTION FIT OR GLASS CUTOUT

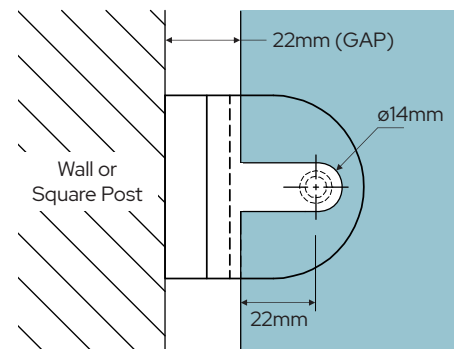
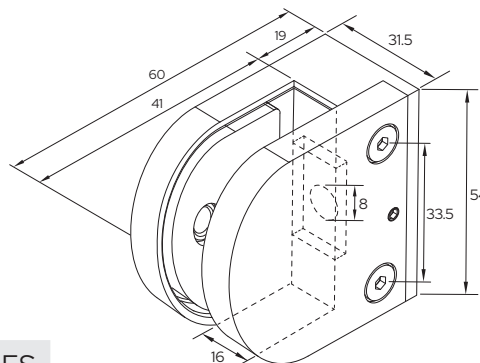
This CRL Z-Series Flat Base "D" Glass Clamps are designed to be used on 12mm thick glass. Constructed stainless steel, the clamps are the perfect solution for partitions, railings, windbreaks and countless other projects. The steel pin can be used for extra support in conjunction with a slot cutout in the glass, or can be removed for a friction fit application. The middle tension grub screw applies pressure to the bottom of the fixing plate and creates maximum strength / grip onto the glass, exceeding the capabilities of other common "D" clamps in the market.

CRL SQUARE STYLE WALL TO GLASS "D" CLAMP



CAT. NO.	FINISHES
Z912BS	Brushed Stainless Steel
Z912PS	Polished Stainless Steel
Z912MBL	Matt Black

CRL ROUND STYLE WALL TO GLASS "D" CLAMP



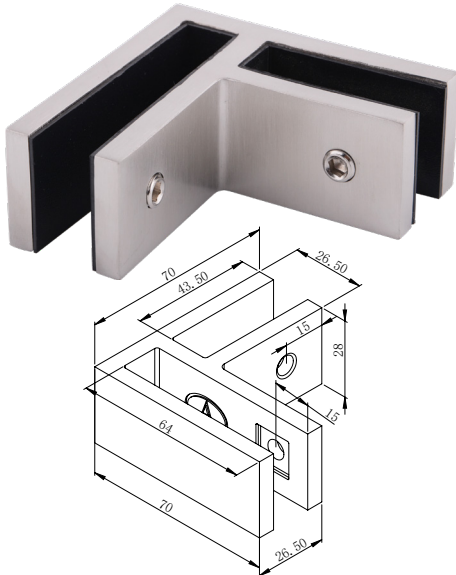
CAT. NO.	FINISHES
Z512BS	Brushed Stainless Steel
Z512PS	Polished Stainless Steel



GLASS BRACING CLAMPS

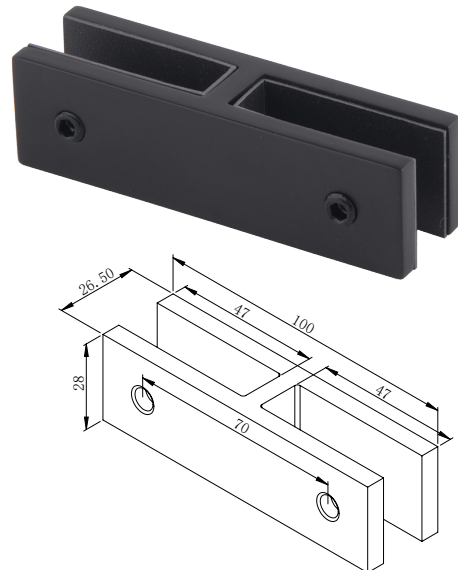
CRL Glass Bracing Clamps are designed to provide extra stability and rigidity to glass panels. There is no need for holes in the glass, simply tighten the grub screw and you are done. Compatible with both 12mm Toughened and 13.52mm Laminated glass, they are perfect for balustrades, pool fencing, shower screens, and anywhere you need support without holes in the glass. Made of Duplex 2205 stainless steel, they feature both excellent strength and superior corrosion resistance. Available in brushed stainless, polished stainless and matt black finishes.

CRL 90 DEGREE GLASS-TO-GLASS BRACING CLAMP



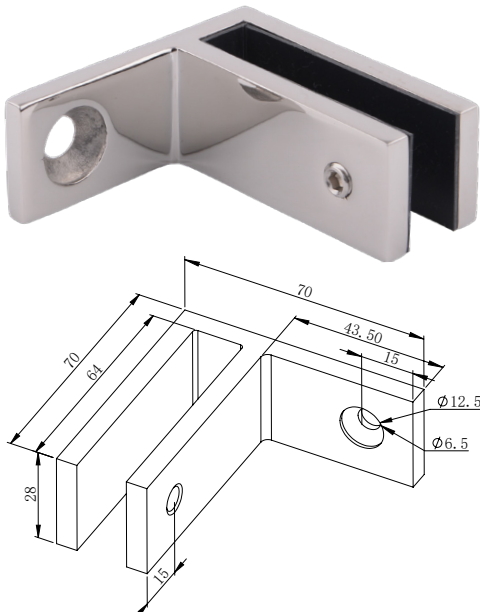
CAT. NO.	FINISHES
GBC90BS	Brushed Stainless Steel
GBC90PS	Polished Stainless Steel
GBC90MBL	Matt Black

CRL 180 DEGREE GLASS-TO-GLASS BRACING CLAMP



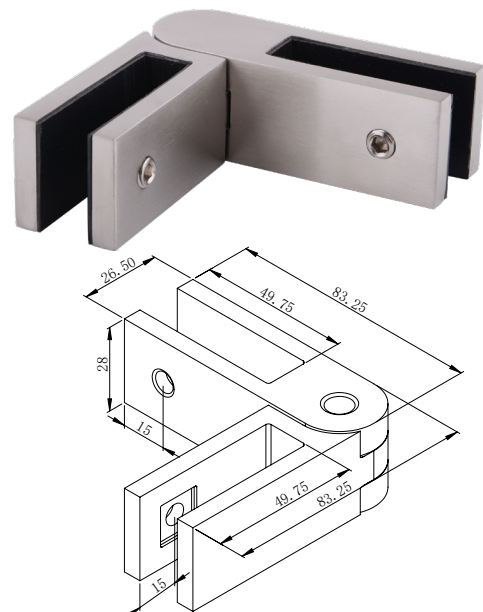
CAT. NO.	FINISHES
GBC180BS	Brushed Stainless Steel
GBC180PS	Polished Stainless Steel
GBC180MBL	Matt Black

CRL WALL TO GLASS BRACING CLAMP



CAT. NO.	FINISHES
GBCWMBS	Brushed Stainless Steel
GBCWMPs	Polished Stainless Steel
GBCWMMBL	Matt Black

CRL ADJUSTABLE GLASS-TO-GLASS BRACING CLAMP



CAT. NO.	FINISHES
GBCADJBS	Brushed Stainless Steel
GBCADJPS	Polished Stainless Steel
GBCADJMBL	Matt Black



Call on 1800 424 275
Fax on 1800 813 013

Melbourne

42 Enterprise Drive
Rowville
VIC 3178
Tel. +61 3 9764 8322

Sydney

9 Shale Place
Eastern Creek
NSW 2766
Tel. +61 2 9851 3444

Enquiries

Email: crlaus@crlaurence.com

www.crlaurence.com.au

CRL®