



CRL SHOWER DOOR HARDWARE

CATSDH_08_23_ZD_AVDV4350



Table of Contents

Finishes

- 1 Hardware Finishes

Shower Door Hinges

- 3 Hinges At A Glance
- 5 Perth Hinges
- 6 Adjustable Perth Hinges
- 7 Geneva Hinges
- 8 Adjustable Geneva Hinges
- 9 Pinnacle Hinges
- 10 Adjustable Pinnacle Hinges
- 11 Vienna Hinges
- 12 Adjustable Vienna Hinges
- 13 Cologne Hinges
- 14 Adjustable Cologne Hinges
- 15 Victoria Hinges
- 15 Plymouth Hinges
- 16 Melbourne Hinges
- 17 Petite Hinges
- 18 Junior Geneva Hinges
- 19 Vernon Hinges
- 20 Adelaide Hinges
- 20 Zurich Hinges
- 21 Cardiff Hinges
- 21 Darwin Hinges
- 21 Senior Cardiff Hinges
- 22 Prima Hinges
- 23 Senior Prima Hinges
- 23 Junior Prima Hinges
- 24 Palermo Hinges
- 24 Scala Hinges

Sliding Shower Door Systems

- 26 Deluxe Serenity Series
- 28 Senior Deluxe Serenity Series
- 30 Cambridge Series
- 32 Hydroslide Series
- 34 Hydroslide Bi-fold Series
- 36 Essence Series
- 38 Cabo Soft Slide Series

Shower Door Pull Handles & Door Knobs

- 40 Pull Handles
- 44 Door Knobs

Towel Bars & Grab Bars

- 46 Towel Bars
- 52 Handle/Towel Bar Combinations
- 56 Grab Bars

Glass Clamps, Brackets & U-Channels

- 58 Square Clamps
- 59 No Drill Clamps
- 59 Beveled Clamps
- 60 Traditional Clamps
- 60 Adjustable Clamps
- 61 Glass Brackets
- 61 Sleeve Over Clamps
- 62 U-Channels

Shower Door Headers & Thresholds

- 64 Deluxe Shower Door Headers
- 66 EZ-Adjust Shower Door Headers
- 66 Shower Door Thresholds

Support Bars

- 68 Support Bars

Water Seals & Sweeps

- 72 Water Seals & Sweeps

Accessories

- 75 Door Stops
- 75 Robe Hooks
- 75 Frameless Door Privacy Locks
- 75 Stick-On Knobs & Pulls
- 75 Toilet Paper Holder
- 75 Deluxe Squeegee

Unmatched Quality and Selection

CRL Frameless Shower Door Hardware is designed to enhance the beauty and function of today's residential and commercial shower enclosures. Every component is meticulously engineered to provide premium aesthetics and lasting durability. A selection of hinges, knobs, pull handles, towel/grab bars, headers, u-channels, and sliding shower door systems offers one-stop shop convenience. As the industry leader, CRL stays on top of the latest trends and innovations.

CRL offers a large selection of shower door hardware finishes. Our extensive options can complement the look and feel of virtually any interior.



Polished
Chrome



Satin Chrome
(Matte)



Brushed
Satin Chrome



Polished
Stainless Steel



Brushed
Stainless Steel



Polished
Nickel



Satin
Nickel



Brushed
Nickel



Antique
Brushed Nickel



Antique
Brass



Polished
Brass



Satin
Brass



Unlaquered
Brass



Ultra
Brass



Gold
Plated



Polished
Copper



Brushed
Copper



Antique
Brushed Copper



Antique
Bronze



Brushed
Bronze



Oil Rubbed
Bronze



Matte
Black



Black



Gun
Metal



Matt Gun
Metal



Brushed
Antique Brass



Polished
Brass PVD



Brushed
Brass PVD



White



Brushed
Rose Gold

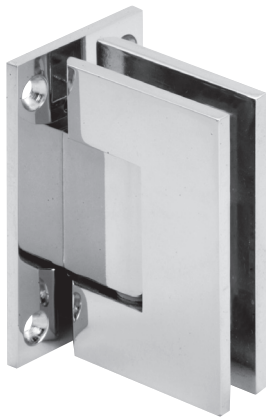
CRL | Hinges



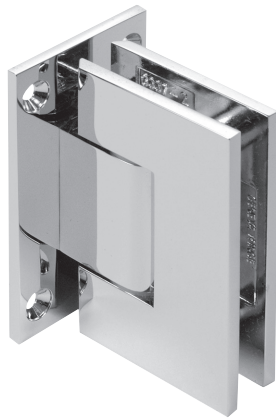
Melbourne Hinge - Polished Chrome

Hinges At A Glance

Each hinge series is designed and engineered for a unique style and function. Here's a quick look.



Perth



Geneva



Pinnacle



Melbourne



Vienna



Cologne



Vernon



Victoria



Plymouth



Adelaide



Darwin



Prima



Cardiff



Zurich



Palermo



Scala

Perth Series Hinges

The Perth Series of professional hinges are pre-set to accommodate 10 mm thick glass. The gaskets are glued into the hinge, combined with a square cut-out in the glass promoting rapid installation. Composed of solid brass, the spring will self center within 25 degrees of the closed position and will open both inwards and outwards.

The Perth Series range is available in ten standard finishes for select variations - Chrome, Brushed Nickel, Matt Black, Brushed Brass PVD, Polished Brass PVD and Brushed Antique Brass.

Perth Series



Cat. No. PER037
Wall Mount
Full Back Plate



Cat. No. PER044
Wall Mount
Offset Back Plate



Cat. No. PER180
180° Glass-to-Glass



Cat. No. PER045
135° Glass-to-Glass



Cat. No. PER092
90° Glass-to-Glass



Cat. No. PERT90
"T" Configuration Back to
Back Glass-to-Glass



Polished Chrome



Brushed Nickel



Matt Black



Matt Gun Metal



White



Polished Brass PVD



Brushed Brass PVD



Brushed Antique Brass



Satin Chrome



Brushed Rose Gold

Adjustable Perth Series Hinges

The Adjustable Perth Series of professional hinges are pre-set to accommodate 10 mm thick glass. Adjustable to accommodate the desired angle (up to 90 degrees) is done after the door is installed. The gaskets are glued into the hinge, combined with a square cut-out in the glass promoting rapid installation. Composed of solid brass, the spring will self-center within 25 degrees of the closed position and will open both inwards and outwards. The hardware is available in three standard finishes - Chrome, Brushed Nickel and Matt Black. The door can swing 90 degrees inward and 90 degrees outward (adjusting angle from factory set position will reduce 90 degrees swing in that direction).

Adjustable Perth Series



Cat. No. PER344
Adjustable Wall Mount
Offset Back Plate



Cat. No. PER380
Adjustable
180° Glass-to-Glass



Cat. No. PER345
Adjustable
135° Glass-to-Glass

Perth Series Specifications

Glass Thicknesses	10 mm Toughened Safety Glass
Special Feature	Glued in Gaskets combined with a Square Glass Cut-out for rapid installations
Construction	Solid Brass
Hinge Swings	Approximately 90° in and 90° out
Closing Type	Self-Centering when within 25° of closed position
Cut-Out Required Includes	Gaskets, Screws, and Glass Fabrication Dimensions

	Two Hinges	Three Hinges
Maximum Door Weight	36 kg	54 kg
Maximum Door Width	711 mm	813 mm



Geneva Series Hinges

The Geneva Series of professional hinges accommodates 12, 10, or 8 mm glass. A variety of styles provide design flexibility, including three wall mount and four glass-to-glass types. Geneva Hinges are self-centering and contain a reversible 5° Pivot Pin (select styles). In addition, Custom Pivot Pins are available to accommodate "off-angle" installations (see below). The hinges are made of solid brass with all moving parts (pins and springs) in stainless steel. Several Geneva Hinges offer the choice of Standard Model, or a 5° Pre-Set Model that allows the door to press in snugly against a jamb.

Geneva Series



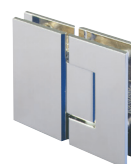
Cat. No. GEN037
Wall Mount
Full Back Plate



Cat. No. GEN074
Wall Mount
Short Back Plate



Cat. No. GEN044
Wall Mount
Offset Back Plate



Cat. No. GEN180
180° Glass-to-Glass



Cat. No. GEN537
5° Pre-Set Model
Full Back Plate



Cat. No. GEN574
5° Pre-Set Model
Short Back Plate



Cat. No. GEN544
5° Pre-Set Model
Offset Back Plate



Cat. No. GEN580
5° Pre-Set Model
180° Glass-to-Glass



Cat. No. GEN092
90° Glass-to-Glass



Cat. No. GENT90
"T" Configuration
Glass-to-Glass



Cat. No. GEN045
135° Glass-to-Glass



Cat. No. GEN545
5° Pre-Set Model
135° Glass-to-Glass

Pony Wall Mount Geneva Series



Cat. No. GEN280
Pony Wall Mount
for 180° Application



Cat. No. GEN245
Pony Wall Mount
for 135° Application

Adjustable Geneva Series Hinges

The Adjustable Geneva Series can be adjusted to accommodate the desired angle (up to 90°) after the door is installed. Once the door is hung, simply loosen the Allen set screws and move the door to the desired closed position. By tightening the Allen screws, the door will self-center to the desired closing position. The door can swing 90° inward and 90° outward (adjusting angle from factory set position will reduce 90° swing in that direction). For doors pulling outwards only (using a clear door jamb), the hinge adjusts to close 5° inside the shower area, allowing the door to close snugly against the jamb.

Adjustable Geneva Series



Cat. No. GEN337
Adjustable Wall Mount
Full Back Plate



Cat. No. GEN344
Adjustable Wall Mount
Offset Back Plate



Cat. No. GEN380
Adjustable
180° Glass-to-Glass



Cat. No. GEN345
Adjustable
135° Glass-to-Glass

Geneva Series Specifications

Glass Thicknesses	12, 10, or 8 mm Toughened Safety Glass
Special Feature	Offers choice of Standard Model factory set at standard 0° closing position, or 5° Pre-Set Model for tighter closure into shower interior so the door can press snugly against a jamb
Construction	Solid Brass
Hinge Swings	Approximately 90° in and 90° out
Closing Type	Self-Centering when within 15° of closed position
Cut-Out Required Includes	Gaskets, Screws, and Glass Fabrication Dimensions

	Two Hinges	Three Hinges
Maximum Door Weight	36 kg	54 kg
Maximum Door Width	711 mm	813 mm



Pinnacle Series Hinges

The Pinnacle Series has radius corners and beveled edges for a sleek appearance. Pinnacle Hinges accommodate 8, 10, or 12 mm thick toughened safety glass, and are self-centering when within 15° of the closed position. Pinnacle hinges are constructed of solid brass, and have stainless steel plunger tips, pins, and springs to ensure a long service life and reliable door closure. The Pinnacle Hinge also contains the same Reversible 5° Pivot Pin featured in our Geneva, Cathedral, Roman, Ultimate, and Elite Series Hinges. A Custom Pivot Pin is also available for "off-angle" installations.

Pinnacle Series



Cat. No. P1N037
Wall Mount
Full Back Plate



Cat. No. P1N074
Wall Mount
Short Back Plate



Cat. No. P1N044
Wall Mount
Offset Back Plate



Cat. No. P1N180
180° Glass-to-Glass



Cat. No. P1N537
5° Pre-Set Model
Full Back Plate



Cat. No. P1N574
5° Pre-Set Model
Short Back Plate



Cat. No. P1N544
5° Pre-Set Model
Offset Back Plate



Cat. No. P1N580
5° Pre-Set Model
180° Glass-to-Glass



Cat. No. P1N045
135° Glass-to-Glass



Cat. No. P1N092
90° Glass-to-Glass

Pony Wall Mount Pinnacle Series Hinges



Cat. No. P1N280
Pony Wall Mount
for 180° Application

Adjustable Pinnacle Series Hinges

Adjustable Pinnacle Series Hinges are designed to accommodate the desired angle (up to 90°) after the door is installed. Once the door is hung, simply loosen the Allen set screws and move the door to the desired closed position. By tightening the Allen screws, the door will self-center to the desired closed position. The door can swing approximately 90° inward and also 90° outward (adjusting angle from factory set position will reduce 90° swing in that direction).

Adjustable Pinnacle Series



Cat. No. P1N337
Adjustable Wall Mount
Full Back Plate



Cat. No. P1N344
Adjustable Wall Mount
Offset Back Plate



Cat. No. P1N380
Adjustable
180° Glass-to-Glass



Cat. No. P1N345
Adjustable
135° Glass-to-Glass

Pinnacle Series Specifications

Glass Thicknesses	8, 10, or 12 mm Toughened Safety Glass
Special Feature	Offers choice of Standard Model factory set at standard 0° closing position, or 5° Pre-Set Model for tighter closure into shower interior so the door can press snugly against a jamb
Construction	Solid Brass
Hinge Swings	Approximately 90° in and 90° out
Closing Type	Self-Centering when within 15° of closed position
Cut-Out Required Includes	Gaskets, Screws, and Glass Fabrication Dimensions

	Two Hinges	Three Hinges
Maximum Door Weight	36 kg	54 kg
Maximum Door Width	711 mm	813 mm



Vienna Series Hinges

Vienna Hinges are designed for wider, heavier doors. Two strategically placed steel pins inside the hinge provide template options. For the safety of "mouse-ears" type cut-outs, the two steel pins should be left in place. This allows the Vienna Hinge to be used with its own CRL "mouse-ears" cut-out. For increased adjustability, the two pins can be removed.

Vienna Series



Cat. No. V1E037
Wall Mount
Full Back Plate



Cat. No. V1EH037
"H" Wall Plate Hinge



Cat. No. V1E074
Wall Mount
Short Back Plate



Cat. No. V1E044
Wall Mount
Offset Back Plate



Cat. No. V1E180
180° Glass-to-Glass



Cat. No. V1E537
5° Pre-Set Model
Full Back Plate



Cat. No. V1E544
5° Pre-Set Model
Offset Back Plate



Cat. No. V1E580
5° Pre-Set Model
180° Glass-to-Glass



Cat. No. V1E045
135° Glass-to-Glass



Cat. No. V1E092
90° Glass-to-Glass

"Positive Close" Vienna Series Hinges



Cat. No. V1E067
Full Back Plate



Cat. No. V1E780
180° Glass-to-Glass

Adjustable Vienna Series Hinges

The Adjustable Vienna Series is designed to accommodate the desired angle (up to 90 degrees) after the door is hung. Simply loosen the Allen set screws and move the door to the desired closed position. By tightening the Allen screws, the door will self-center to the desired closed position. The door can swing 90 degrees inward and 90 degrees outward (adjusting angle from factory set position will reduce 90 degree swing in that direction).

Adjustable Vienna Series



Cat. No. VIE337
Adjustable Wall Mount
Full Back Plate



Cat. No. VIE344
Adjustable Wall Mount
Offset Back Plate



Cat. No. VIE380
Adjustable
180° Glass-to-Glass

Vienna Series Specifications

Glass Thicknesses	10 or 12 mm Toughened Safety Glass
Construction	Solid Brass
Hinge Swings	Approximately 90° in and 90° out
Closing Type	Self-Centering when within 15° of closed position
Cut-Out Required Includes	Gaskets, Screws, and Glass Fabrication Dimensions

Except VIE074, VIE044 and VIE544 Models

	Two Hinges	Three Hinges
Maximum Door Weight	50 kg	63 kg
Maximum Door Width	914 mm	914 mm

For VIE074, VIE044 and VIE544 Models Only

	Two Hinges	Three Hinges
Maximum Door Weight	45 kg	59 kg
Maximum Door Width 3/8" (10 mm) Glass	864 mm	864 mm
Maximum Door Width 12 mm Glass	813 mm	813 mm



Cologne Series Hinges

Cologne Hinges have radius corners and beveled edges. Cologne Hinges are designed for wider, heavier doors. Two strategically placed steel pins inside the hinge provide template options, and satisfy two schools of thought for mounting shower door hinges. For the safety of "mouse-ears" type cut-outs, the two steel pins should be left in place. This allows the Cologne Hinge to be used with its own CRL "mouse-ears" cut-out. For increased adjustability, the two pins can be removed.

Cologne Series



Cat. No. COL037
Wall Mount
Full Back Plate



Cat. No. COL044
Wall Mount
Offset Back Plate



Cat. No. COL180
180° Glass-to-Glass



Cat. No. COL045
135° Glass-to-Glass



Cat. No. COL537
5° Pre-Set Model
Full Back Plate



Cat. No. COL544
5° Pre-Set Model
Offset Back Plate



Cat. No. COL092
90° Glass-to-Glass

"Positive Close" Cologne Series Hinges



Cat. No. COL067
Wall Mount Full Plate



Cat. No. COL780
180° Glass-to-Glass

Adjustable Cologne Series Hinges

The Adjustable Cologne Series is designed to accommodate the desired angle (up to 90°) after the door is installed. Once the door is hung, simply loosen the Allen set screws and move the door to the desired closed position. By tightening the Allen screws, the door will self-center to the desired angle. The door can swing 90° inward and also 90° outward (adjusting angle from factory set position will reduce 90° swing in that direction).

Adjustable Cologne Series



Cat. No. COL337
Adjustable Wall Mount
Full Back Plate



Cat. No. COL380
Adjustable
180° Glass-to-Glass

Cologne Series Specifications

Glass Thicknesses	10 or 12 mm Toughened Safety Glass
Construction	Solid Brass
Hinge Swings	Approximately 90° in and 90° out
Closing Type	Self-Centering when within 15° of closed position
Cut-Out Required Includes	Gaskets, Screws, and Glass Fabrication Dimensions

Except COL044 and COL544 Models

	Two Hinges	Three Hinges
Maximum Door Weight	50 kg	63 kg
Maximum Door Width	914 mm	914 mm

For COL044 and COL544 Models Only

	Two Hinges	Three Hinges
Maximum Door Weight	45 kg	59 kg
Maximum Door Width <small>3/8" (10 mm) Glass</small>	864 mm	864 mm
Maximum Door Width <small>12 mm Glass</small>	813 mm	813 mm



Victoria Series Hinges

Victoria Series Hinges are designed to support heavier, wider doors using two hinges instead of three. Victoria Series Hinges utilize an integrated stiffening beam to minimize clamping plate flex, resulting in exceptional holding power. They also deliver increased self-centering force, and heat-treated stainless steel springs produce enhanced durability. Do not exceed two hinges per door.



Cat. No. VCT037
Wall Mount

Victoria Series Specifications

Glass Thicknesses	10 or 12 mm Toughened Safety Glass
Construction	Solid Brass
Hinge Swings	Approximately 90° in and 90° out
Closing Type	Self-Centering when within 15° of closed position
Cut-Out Required Includes	Gaskets, Screws, and Glass Fabrication Dimensions



Cat. No. VCT180
180° Glass-to-Glass

Maximum Door Weight	Two Hinges
Maximum Door Width	64 kg
	1 000 mm



Plymouth Series Hinges

Plymouth Series Hinges are designed to support heavier, wider doors using two hinges. This produces a frameless aesthetic by reducing the amount of hardware needed. Plymouth Series Hinges utilize an integrated stiffening beam to minimize clamping plate flex, resulting in exceptional holding power. They also deliver increased self-centering force, and heat-treated stainless steel springs produce enhanced durability.



Cat. No. PLY037
Wall Mount

Plymouth Series Specifications

Glass Thicknesses	10 or 12 mm Toughened Safety Glass
Construction	Solid Brass
Hinge Swings	Approximately 90° in and 90° out
Closing Type	Self-Centering when within 15° of closed position
Cut-Out Required Includes	Gaskets, Screws, and Glass Fabrication Dimensions



Cat. No. PLY180
180° Glass-to-Glass

Maximum Door Weight	Two Hinges
Maximum Door Width	64 kg
	1 000 mm



Melbourne Series Hinges

Melbourne Series Hinges feature large hinge plates that provide more clamping force. The required simple rectangular cut-out and inset style gasket system allow ease of installation. Constructed of forged solid brass, the Melbourne Series offers five versions of Wall Mount Models, a 180 Degree Glass-to-Glass Model, a 180 Degree Glass-to-Glass Adjustable Model, and Replacement Cover Plates (for MEL024 only) to conceal rear hinge screws and wall mount screws (MEL024 only). Melbourne Hinges contain the same 5 degree reversible pivot pin used in our Geneva Series Hinges..



Cat. No. MEL037
Wall Mount
Full Back Plate



Cat. No. MEL044
Wall Mount
Offset Back Plate



Cat. No. MEL024
* Wall Mount
Offset Back Plate



Cat. No. MEL054
Face Mount
with Cover Plate



Cat. No. MEL324
Adjustable
Wall Mount Offset Back
Plate with Cover Plate



Cat. No. MEL180
180° Glass-to-Glass
Hinge Only



Cat. No. MEL380
Adjustable
180° Glass-to-Glass



Cat. No. MEL024CP
Replacement
Cover Plates
Only for MEL024

Melbourne Series Specifications

Glass Thicknesses	8, 10, or 12 mm Toughened Safety Glass	
Construction	Solid Brass	
Hinge Swings	Approximately 90° in and 90° out	
Closing Type	Self-Centering when within 15° of closed position	
Cut-Out Required Includes	Gaskets, Screws, and Glass Fabrication Dimensions	

	Two Hinges	Three Hinges
Maximum Door Weight	45 kg	54 kg
Maximum Door Width	762 mm	864 mm



Petite Series Hinges

The Petite Series provides a complete spectrum of Hinges for frameless shower doors using 8 or 6 mm toughened safety glass. The Petite Series includes three unique types: the PET044 Wall Mount Offset Back Plate Hinge allows for a clean exterior sight line by having all mounting screws inside the shower; the PET181 Glass-to-Glass Hinge is used to mount a door to a fixed panel in a 180° plane, and allows the door to swing in a complete 180° arc outwards; the PET182 Glass-to-Glass Hinge allows the door to swing in a complete 180° arc inwards. Petite Hinges have mitered edges with curved corners to provide an aesthetically pleasing look. Petite Hinges have 25% thicker plates than competitive hinges, thereby reducing deflection and providing greater holding power.

Petite Series



Cat. No. PET037
Wall Mount
Full Back Plate



Cat. No. PET044
Wall Mount
Offset Back Plate



Cat. No. PET180
180° Glass-to-Glass



Cat. No. PET135
135° Glass-to-Glass



Cat. No. PET181
180° Glass-to-Glass
Swings out only



Cat. No. PET182
180° Glass-to-Glass
Swings in only

Petite Series Specifications

Glass Thicknesses	6 or 8 mm Toughened Safety Glass
Special Feature	Hinge plates are 25% thicker than competitive hinges, thereby reducing deflection and providing greater holding power
Construction	Solid Brass
Hinge Swings	Approximately 90° in and 90° out
Closing Type	Self-Centering when within 25° of closed position
Cut-Out Required Includes	Gaskets, Screws, and Glass Fabrication Dimensions

	Two Hinges	Three Hinges
Maximum Door Weight	25 kg	37 kg
Maximum Door Width	787 mm	864 mm



Junior Geneva Series Hinges

The same elegant European design that has made our Geneva Series so popular is available in a smaller version, the Junior Geneva, to offer flexibility of application. Used to accommodate 8 or 6 mm thick glass, the Junior Geneva is made of solid brass. There are three Wall Mount styles along with a 180° Glass-to-Glass style. The Junior Geneva is self-centering and available in several finishes. They contain a Reversible Pivot Pin for optional 5° tighter door closure so the door can press snugly against a jamb.

Junior Geneva Series



Cat. No. JRG037
Wall Mount
Full Back Plate



Cat. No. JRG044
Wall Mount
Offset Back Plate



Cat. No. JRG180
180° Glass-to-Glass



Cat. No. JRG074CH
Wall Mount
Short Back Plate

Junior Geneva Series Specifications

Glass Thicknesses	6 or 8 mm Toughened Safety Glass
Special Feature	Most models offer a choice of Standard Model, factory set at standard closing position (0°), or 5° Pre-Set Model for tighter closure into shower interior so the door can press snugly against a jamb.
Construction	Solid Brass
Hinge Swings	Approximately 90° in and 90° out
Closing Type	Self-Centering when within 25° of closed position
Cut-Out Required Includes	Gaskets, Screws, and Glass Fabrication Dimensions

	Two Hinges	Three Hinges
Maximum Door Weight	28 kg	42 kg
Maximum Door Width	711 mm	813 mm



Vernon Series Hinges

The self-closing Vernon Hinge represents the synthesis between automatic mechanical hinges and hydraulic door closers. A choice of Hold Open and No Hold Open models allows for flexibility of installation. A control valve allows for adjust of hinge to the desired closing speed. Vernon is ambidextrous, with positive stops at zero and 90 degrees, providing even more design freedom. The Vernon Hinge features an aluminum body in distinct configurations for Wall Mount and Glass-to-Glass applications.



Cat. No. H8010BT
Hold Open Model
Wall Mount
Full Back Plate



Cat. No. H8011BT
Hold Open Model
Wall Mount
Offset Back Plate



Cat. No. H8015BT
Hold Open Model
180° Glass-to-Glass



Cat. No. H8210BT
No Hold Open Model
Wall Mount
Full Back Plate



Cat. No. H8211BT
No Hold Open Model
Wall Mount
Offset Back Plate



Cat. No. H8215BT
No Hold Open Model
180° Glass-to-Glass

Vernon Series Specifications

Glass Thicknesses	8, 10, 12, 13.52 mm
Construction	Aluminum
Hinge Swings	Approximately 90° in and 90° out
Closing Type	Self-Centering when within 15° of closed position
Cut-Out Required Includes	Snap-In Molded Gaskets; Hex Screws

Wall Mount Models and Glass-to-Glass Models

	Wall Mount	Glass-to-Glass
	Two Hinges	Two Hinges
Maximum Door Weight	100 kg	80 kg
Maximum Door Width	1000 mm	1000 mm



Adelaide Series Hinges

The Adelaide Series is a bifold Hinge for 8, 10 or 12 mm toughened safety glass. This model features brass construction, 180 degree one way rotation and works with most standard wall mount hinges to create a bifolding door installation. Additional can also be used for a "Fix and Swing" screen installations.



Cat. No. ADL180
180° Glass-to-Glass
Bi-Fold

Adelaide Series Specifications

Glass Thicknesses	8, 10 or 12 mm Toughened Safety Glass	
Construction	Solid Brass	
Hinge Swings	Approximately 180° One Way	
Closing Type	Self-Centering when within 25° of closed position	
Cut-Out Required Includes	Gaskets, Screws, and Glass Fabrication Dimension	
	Two Hinges	Three Hinges
Maximum Door Weight	36 kg	54 kg
Maximum Door Width	711 mm	813 mm



Zurich Series Hinges

The Zurich Series is a bifold Hinge for 8 or 10 mm toughened safety glass. All seven Zurich Hinge models feature stainless steel or brass construction, and are available in up to nine finishes. In addition, screws and washers are interchangeable (see below). Only two holes per Hinge per panel are required, with no cut-out necessary.



Cat. No. ZUR01
180° Glass-to-Glass
Outswing or Bi-Fold
Inswing



Cat. No. ZUR02
180° Glass-to-Glass
Inswing or Bi-Fold
Outswing



Cat. No. ZUR03
Wall Mount Inswing



Cat. No. ZUR04
Glass-to-Glass
90° Inswing



Cat. No. ZUR05
Wall Mount Outswing



Cat. No. ZUR07
Glass-to-Glass
Inline Outswing

Zurich Series Specifications

Glass Thicknesses	8 or 10 mm Toughened Safety Glass	
Construction	Stainless Steel or Solid Brass	
Hinge Swings	See descriptions next to photos of hinges	
Closing Type	Self-Centering when within 15° of closed position	
Cut-Out Required Includes	Gaskets, Screws, and Glass Fabrication Dimensions	
	Two Hinges	Three Hinges
Maximum Door Weight	45 kg	68 kg
Maximum Door Width	914 mm	1016 mm



Cardiff & Darwin Series Pivot Hinges

Cardiff Series Hinges are designed for use with 8 or 10 mm toughened safety glass, and provide a wide array of application possibilities. Advantages of pivot type hinge include the fact that they carry the majority of the door weight on the bottom hinge, and have the ability to be inset from the wall, enabling clearance for towel bars and other projections.



Cat. No. CAR01
Top or Bottom Mount



Cat. No. DAR01
Top or Bottom Mount
Economy Pivot Hinge



Cat. No. CAR02
Glass-to-Fixed
Transom Mount



Cat. No. CAR05L & CAR05R
Offset Bracket Wall Mount
Right Hand Mount



Cat. No. CAR07
Top or Bottom Mount with
Attached Reversible U-Clamp

Cardiff / Darwin and Senior Cardiff Series Specifications

Glass Thicknesses	8 or 10 mm
Construction	Solid Brass
Hinge Swings	Full Rotation
Closing Type	Self-Centering when within 15° of closed position
Cut-Out Required Includes	Gaskets, Screws, and Glass Fabrication Dimensions



Maximum Door Weight	45 kg	65 kg
Maximum Door Width	787 mm	914 mm

Cardiff / Darwin Series	Senior Cardiff Series
45 kg	65 kg
787 mm	914 mm

Senior Cardiff Series Pivot Hinges

Senior Cardiff Series Top and Bottom Mount Pivot Hinges are designed for use with 12 mm thick toughened safety glass. Advantages of the Top and Bottom Mount Pivot Hinges include the fact that they carry the majority of the door weight on the bottom hinge, and have the ability to be inset from the door edge, enabling sufficient clearance for towel bars or other projections. Senior Cardiff Hinges are self-centering, with four strong springs for maximum retention strength.



Cat. No. SRCAR01
Top or Bottom Mount



Cat. No. SRCAR05L
Offset Bracket Wall Mount
Left Hand Mount



Cat. No. SRCAR05R
Offset Bracket Wall Mount
Right Hand Mount

Prima Series Pivot Hinges

Prima Series Pivot Hinges are designed for use with 8 or 10 mm toughened safety glass, and provide a wide array of application possibilities. Advantages of pivot type hinges include the fact that they carry the majority of the door weight on the bottom and have the ability to be inset from the wall, enabling clearance for towel bars and other projections.



Cat. No. PPH01
Top or Bottom Mount



Cat. No. PPH08
Top or Bottom Mount
with Rear Drip Plate



Cat. No. PPHWP1
Drip Plate Only for Top
and Bottom Mount Hinge



Cat. No. PPH06
Header Mount Compatible
Only with EZ Adjust Header



Cat. No. PPH05L
Offset Bracket Wall Mount
Left Hand Mount



Cat. No. PPH05R
Offset Bracket Wall Mount
Right Hand Mount



Cat. No. PPH03
L-Bracket
Wall Mount



Cat. No. PPH02
Glass-to-Fixed
Transom Mount



Cat. No. PPH04
Inline Panel Mount



Cat. No. PPH07
Top or Bottom Mount with
Attached Reversible U-Clamp



Cat. No. PPH0735L
Top or Bottom Mount
135° Glass-to-Glass Left



Cat. No. PPH0735R
Top or Bottom Mount
135° Glass-to-Glass Right



Cat. No. PPH301
Adjustable
Top or Bottom Mount

Prima Series Specifications

Glass Thicknesses	8 or 10 mm
Construction	Solid Brass
Hinge Swings	Full Rotation
Closing Type	Self-Centering when within 15° of closed position
Cut-Out Required Includes	Gaskets, Screws, and Glass Fabrication Dimensions



Maximum Door Weight	45 kg
Maximum Door Width	787 mm

Senior Prima Series Pivot Hinges

Senior and Junior Prima Series Hinges carry the majority of the weight on the bottom, and have the ability to be inset from the wall, enabling clearance for towel bars and other projections. The Glass-to-Fixed Transom Mount Pivot Hinge is used for doors having fixed transoms above them. When placed vertically, either style can be used in movable transom installations.



Cat. No. SRPPH01
Top or Bottom Mount



Cat. No. SRPPH02
Glass-to-Fixed
Transom Mount



Cat. No. SRPPH06
Top Mount with
EZ-Adjust Header



Cat. No. SRPPH07
Top or Bottom Mount
with Attached
Reversible U-Clamp



Cat. No. SRPPH05L
Offset Bracket Wall Mount
Left Hand Mount



Cat. No. SRPPH05R
Offset Bracket Wall Mount
Right Hand Mount

Senior Series Specifications

Glass Thicknesses	12 mm
Construction	Solid Brass
Hinge Swings	Full Rotation
Closing Type	Self-Centering when within 15° of closed position
Cut-Out Required Includes	Gaskets, Screws, and Glass Fabrication Dimensions
	Two Hinges
Maximum Door Weight	66 kg
Maximum Door Width	914 mm



Junior Prima Series Hinges



Cat. No. JRPPH01
Top or Bottom Mount



Junior Series Specifications

Glass Thicknesses	6 mm
Construction	Solid Brass
Hinge Swings	Full Rotation
Closing Type	Self-Centering when within 15° of closed position
Cut-Out Required Includes	Gaskets, Screws, and Glass Fabrication Dimensions
	Two Hinges
Maximum Door Weight	28 kg
Maximum Door Width	711 mm

Palermo Series Hinges

The sleek Palermo Series Hinge is unlike any other hinge. The precision lines help shape the unique design of this hinge for 10 mm to 12 mm glass. All fasteners are concealed. The hinge has an adjustable closing position that is accessed when the door is hung. The hinges are self-centering within 30° of the closed position. Using two hinges, a maximum door width of 1000 mm and a maximum weight of 50 kg can be achieved.



Cat. No. PAL044
Wall Mount

Palermo Series Specifications

Glass Thicknesses	10 or 12 mm Toughened Safety Glass
Construction	Solid Brass
Hinge Swings	Approximately 90° in and 90° out
Closing Type	Self-Centering when within 15° of closed position
Cut-Out Required Includes	Gaskets, Screws, and Glass Fabrication Dimensions



Cat. No. PAL180
180° Glass-to-Glass

Maximum Door Weight	Two Hinges 64 kg
Maximum Door Width	1000 mm



Scala Series Hinges

Scala offers a new design in frameless shower door hinges. The body of the hinge remains fixed while the door pivots from a hidden axle. Scala hinges are single-acting and only swing outwards. A stop or strike is required to prevent the door from swinging inward. The Scala hinge works with 5/16" and 3/8" (8 mm and 10 mm) glass. The exterior of the hinge can be customized with a specific design, making it ideal for hospitality applications. Hinges are "handed" (right hand/left hand) when viewed from outside the shower.



Cat. No. SCA044R
Wall Mount Right
Cat. No. SCA044L
Wall Mount Left

Scala Series Specifications

Glass Thicknesses	8 or 10 mm Toughened Safety Glass
Construction	Solid Brass
Hinge Swings	Out Only
Closing Type	Fine Tune Adjustment of up to 1-1/2° in Closed Position
Cut-Out Required Includes	Gaskets, Screws, and Glass Fabrication Dimensions



Cat. No. SCA180R
180° Glass-to-Glass Right
Cat. No. SCA180L
180° Glass-to-Glass Left

Maximum Door Weight	Two Hinges 45 kg
Maximum Door Width	762 mm



CRL | Sliding Door Systems



Deluxe Serenity Series - Polished Stainless

Deluxe Serenity Series Sliding Shower Door System

Our Deluxe Serenity Series Sliding Shower Door System is unique from traditional sliding shower doors. The use of minimal hardware provides a frameless look that gives the enclosure floating appearance. Specially designed roller bearings allow for quiet and easy opening and closing of the door. This unique roller system operates above and below the header bar that spans the top of the enclosure. One sliding and one fixed panel make the 180 Degree Standard Kit beautiful and practical. Units will work with 10 mm thick toughened glass.

Standard Deluxe 180 Degree Kit Includes

- One - 2 m Length Header Bar
- Four - Rollers
- Two - Stoppers
- Two - Track Holder Fittings for Wall
- Two - Track Holder Fittings for Fixed Panel
- One - Thru-Glass Pull
- One - Door Guide
- One - 2.41 m Clear L-Seal

Specifications:

Glass Thickness: 10 mm - Not Included

Material: Stainless Steel

Maximum Door Size: Do Not Exceed Either 762 mm Wide or 40 kg

DELUXE 180 DEGREE KIT

CAT. NO.	COLOUR
AUSER78PS	Polished Stainless Steel
AUSER78BS	Brushed Stainless Steel
AUSER78MBL	Matt Black
AUSER78BB	Brushed Brass PVD

Deluxe Serenity Series Sliding Shower Door System Components



Cat. No. AUSERH2
2000 mm Header Bar

Cat. No. AUSERH27
2700 mm Header Bar



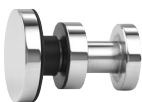
Cat. No. AUSERNR1
Roller



Cat. No. AUSERNS1
Door Stopper



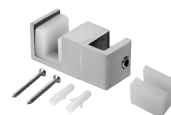
Cat. No. AUSERAHW2
Track Holder
Fittings for Wall



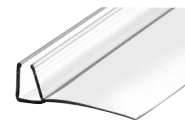
Cat. No. AUSERFP2
Track Holder Fitting
for Fixed Panel



Cat. No. AUSERNHP2
Thru-Glass Pull



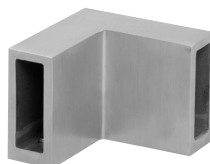
Cat. No. AUSERUG2
Door Guide



Cat. No. PC1090
90 Degree Vinyl Finseal
22 mm Fin



Cat. No. AUSER90
Accessory Kit for
90 Degree Return is
used in conjunction
with Track Holder
Fitting



Cat. No. SERC2
90 Degree Double Door
Connector Bracket

Purchase two 180 Degree Serenity Series Sliding Systems along with 90 Degree Door Connector Bracket for a V-corner Shower Enclosure.

NOTE: Each Sliding Door Should Not Exceed 23 kg.



Senior Deluxe Serenity Series - Polished Stainless

Senior Deluxe Serenity Series Sliding Door System

Senior Deluxe Serenity Sliding Shower Door System is designed for use with 12 mm thick toughened safety glass (not included). Utilizing many of the attractive and practical features of the Deluxe Serenity, Senior Deluxe Serenity is sure to grab attention with its majestic appearance in an elegant bathroom. The Senior Deluxe Serenity Kit comes with the hardware for installation of a 180 degree door and fixed panel, except U-channel or glass clamps, which are ordered separately. Also purchased separately, our Senior 90 Degree Accessory Kit can be used to construct enclosures having a 90 degree return panel. The Senior Deluxe Serenity Sliding Kit is available in a choice of polished or brushed stainless steel.

Available Finishes: Polished Stainless Steel & Brushed Stainless Steel.

NOTE: Maximum door capacity of 50 kg.



Cat. No. SRSER90
90 Degree Accessory Kit

Cat. No. SRSER78
Standard 180 Degree Kit Includes

- One - 2 m Length Header Bar
- Four - Rollers
- One - Stopper
- Two - Track Holder Fittings for Wall
- Two - Track Holder Fittings for Fixed Panel
- One - Thru-Glass Pull
- One - Door Guide
- One - 2.41 m Clear L-Seal

Senior Deluxe Serenity Series Sliding Door System Kit Components



Cat. No. SRSERH2
2000 mm Header Bar
Low Profile 40 mm Height



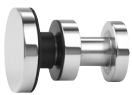
Cat. No. SRSERR4
Roller



Cat. No. SRSERS4
Stopper



Cat. No. SRSERF4W
Track Holder
Fittings for Wall



Cat. No. SRSERF4FP
Track Holder Fittings
for Fixed Panel



Cat. No. SERNHP2
Thru-Glass Pull



Cat. No. SERDG2
Door Guide



Cat. No. DK98L
2489 mm Clear
L-Seal



Cambridge Series Two Door Bypass - Brushed Stainless

Cambridge Series Two Door Bypass Sliding Shower Door System

The Cambridge Series Two Door Bypass Sliding Shower Door System utilizes a modern top roller system that features four rollers on each door for ease of sliding. This quiet, smooth sliding system is made of high quality stainless steel, thus ensuring easy opening and closing of the doors. The Cambridge Series is versatile in design, able to adapt to full standing showers or above bathtubs. The Cambridge Series Bypass Sliding Shower Door System accommodates 10 or 8 mm thick toughened safety glass (not included). Offered in polished or brushed stainless steel matte black finish.

Available Finishes: Polished Stainless Steel, Brushed Stainless Steel & Matt Black.

NOTE: Each Sliding Door Should Not Exceed 38 kg.

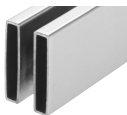


Cat. No. CAM90
90 Degree Accessory Kit

Cat. No. CAM73
Standard 180 Degree Kit Includes

- One - 1854 mm Length of Header Bar
- Eight - Rollers
- Two - Stoppers
- Two - Track Holder Fittings for the Wall
- One - Bottom Guide
- Two - 1016 mm Bottom Sweeps With Drip Rail
- Two - 2032 mm Clear L-Jamb
- Two - 610 mm Single-Sided Towel Bars
- One - Tool Kit

Cambridge Series Two Door Bypass Sliding Shower Door System Kit Components



Cat. No. CAMH1
1854 mm
Length of Header Bar



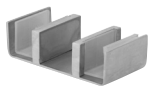
Cat. No. CAMR4
Roller



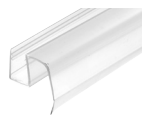
Cat. No. CAMS1
Stopper



Cat. No. CAMW2
Track Holder
Fittings for the Wall



Cat. No. CAMG1
Bottom Guide



Cat. No. P995WS
Bottom Sweep
with Drip Rail



Cat. No. DK80L
2032 mm Clear
L-Jamb



Cat. No. BMNW24
Single-Sided Towel Bar



Hydroslide Series - Chrome

Hydroslide Sliding Shower Door System

Hydroslide Sliding Shower Door Kits are designed for full standing showers or above bathtubs. The Hydroslide System accommodates a wide range of shower designs with fixed glass panels on either end, or both sides at 90 or 180 degrees. The Hydroslide System also accommodates the option of floor-to-near-ceiling glass panels with a sliding door. 180 Degree Hydroslide Sliding Shower Door Kits feature the latest 'all-glass' look. Kits are available in either 1524 mm or 2134 mm widths. Installers can cut the width to size, and height is optional as long as the sliding door glass weighs less than 40 kg. 90 Degree wall-to-glass installations require the 180 Degree Standard Kit, plus the 90 Degree Wall-to-Glass Accessory Kit.

Available Finishes: Chrome, Brushed Nickel, Oil Rubbed Bronze and Brass.

NOTE: Maximum Door Capacity of 40 kg.



Cat. No. HYDK60
1524 mm 180° Standard Kit

Cat. No. HYDK84
2134mm 180° Standard Kit

*90 Degree Wall-To-Glass Accessory Kit consists of:

One - 90 Degree Glass-to-Sliding Track Connector
One - 90 Degree Wall-to-Glass Bracket *90 Degree Units require that you order one 180 Degree Standard Kit plus one 90 Degree Wall-to-Wall Accessory Kit



CAT. No HYDA9
90 Degree Accessory Kit

Standard 180 Degree Kit Includes

One - Sliding Glass Door Upper Track
Two - Rolling Hangers for Sliding Glass Door
Two - Sliding Glass Door Roller Stops
One - Sliding Glass Door Floor Guide
Two - 90 Degree Wall to Upper Track Connector
Two - 180 Degree Glass to Sliding Track Connector
One - 914 mm Half-Round Threshold
One - 2489 mm Clear L-Seal

Hydroslide Standard Sliding Shower Door System Kit Components



Cat. No. HYD60
Upper Track 1524 mm
Cat. No. HYD84
Upper Track 2134 mm



Cat. No. HYD01
Rolling Hangers for Sliding Glass Door



Cat. No. HYD02
Sliding Glass Door Roller Stops



Cat. No. HYD03
Sliding Glass Door Floor Guide



Cat. No. HYDW90
90 Degree Wall to Upper Track Connector



Cat. No. HYDG180
180 Degree Glass to Sliding Track Connector



Cat. No. SDT980
914 mm Half-Round Threshold



Cat. No. HYDG90CH
90 Degree Track Connector



Hydroslide Series Bifold - Chrome with ZUR07 Hinges

Hydroslide Bi-Fold Series

These Hydroslide Bi-Fold Hinges add a different element to the already popular Hydroslide System. Instead of a standard sliding door, you can now “Bi-Fold” two folding panels of glass into the shower enclosure, creating a larger opening than the single sliding door will allow. Made of solid brass, they are available in three popular finishes. DSBF1 Door Stop (shown below) is available for use with this system. Upper Track, Hanger, and accessories are sold separately.

Available Finishes: Polished Chrome, Brushed Nickel & Oil Rubbed Bronze.

NOTE: Maximum Doors Capacity of 45 kg



Cat. No. HYD037
Glass-to-Wall Mount
Hinge



Cat. No. HYDH180
Glass-to-Glass Mount
Hinge

Hydroslide Bi-Fold Specifications

Glass Thickness	8 or 10 mm Toughened Glass
Maximum Door Size	Do Not Exceed Either 1219 mm or 45 kg for Both Folding Doors Combined. Using Two Hinges Only on Each Folding Panel.
Basic Hinge Glass Fabrication	Holes Required on Hinge Connection to Glass.



Essence Series - Polished Chrome

Essence Series Bottom Rolling Shower

Our Essence Series allows a headerless appearance by utilizing a bottom rolling system that includes an anti-derail/anti-pinch guard feature. The bottom rollers also have an integrated height adjustment for door to vertical jamb alignment. By being completely header-free, a frameless vertical and horizontal appearance is achieved. Smooth and quiet operation of the door is the cornerstone of this bottom rolling unit. At the same time, excellent water management is accomplished at the sill via the bottom track, and vertically with the use of a clear L-shape jamb.

Available Finishes: Polished Chrome, Brushed Nickel, Oil Rubbed Bronze & Polished Brass.

NOTE: Maximum Door Capacity of 57.6 kg.



Cat. No. ESS1
Rounded Style



Cat. No. ESS3
Square Style

Basic ESS1 or ESS3 Kits Include the Following

- Two - Bottom Rollers
- One - Spanner Wrench for Roller Adjustment
- One - Top Door Guide
- One - 1.63 m Bottom Track
- One - 2.49 m U-Channel
- One - 2.49 m Plastic L-Seal
- One - SDCEC12 End Cap for Channel
- Two - Shower Door Bumpers
- One - 1.6 mm Neoprene Setting Block

Essence Series Bottom Rolling Shower Specifications

Glass Thickness	12 mm Toughened Safety Glass (Not Included)
Materials	Rollers and Top Guide, Bottom Sliding Track and U-Channel, L-Jamb Stock
Maximum Door Size	Do Not Exceed Either 864 mm Wide or 57.6 kg
Basic Kit Glass Fabrication	Notch Required for Bottom Rollers, Holes Required for Top Guide



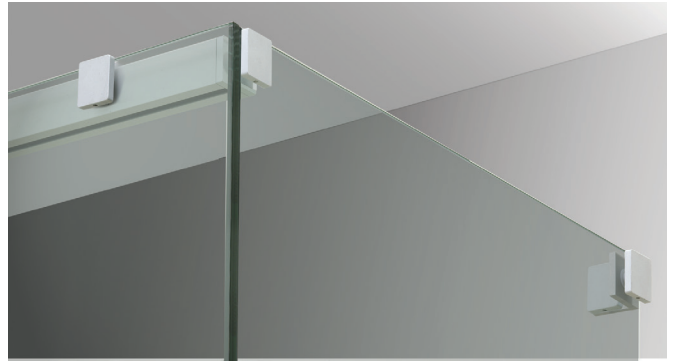
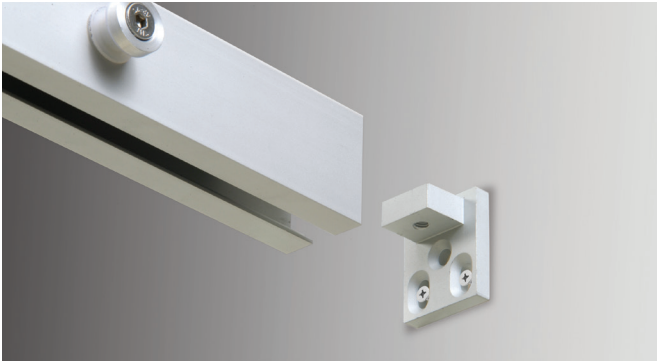
Cabo Soft Slide Series - Polished Chrome

Cabo Soft Slide Series

The Cabo Soft Slide Sliding Door System offers the 'Softbrake' Braking System on the door, ensuring smooth operation. 'Softbrake' cushions the opening and closing of the door gently, quietly, and is completely concealed inside the header. 'Softbrake' controls the last 102 mm of door travel, preventing the glass from impacting the frame or adjacent glass panel. The Cabo Soft Slide Series offers a choice of two clamp cover designs (rounded or square), and is available in five architectural finishes. Each Kit comes complete with a Header, two Top Clamps with Covers, two Wall Mount Brackets, two Top Fixed Glass Fasteners with Covers, and a Bottom Guide.

Available Finishes: Polished Chrome, Brushed Nickel, Duranodic Bronze, Satin Anodised & Polished Brass.

NOTE: Maximum Door Capacity of 80 kg.



Cat. No. CABS65

1650 mm
Square style

Cat. No. CABS84

2134 mm
Square style

Cabo Soft Slide Series Specifications

Glass Thickness	8, 10, 12 mm Toughened Safety Glass (Not Included)
Materials	Aluminum
Maximum Door Weight	80 kg
Finished Opening Size	Minimum 1524 mm Wide for 1.65 m Kit; Minimum 1650 mm Wide for 2134 mm Kit
Glass Fabrication	Holes and Notches Required
Includes	Gaskets, Screws, and Glass Fabrication Information

CRL | Pull Handles



Ladder Series Pull Handle - Brushed Nickel

Pull Handles

CRL offers a variety of pull handles in numerous finishes. Each one is constructed of the finest materials. Custom designs and finishes are also available.



BM Series

Cat. No. BM6X6
152 mm

Cat. No. BM8X8
203 mm



BM Series - No Washer

Cat. No. BMNW6X6
152 mm

Cat. No. BMNW8X8
203 mm



SQ Series

Cat. No. SQ6X6
152 mm

Cat. No. SQ8X8
203 mm



MT Series

Cat. No. MT6X6
152 mm

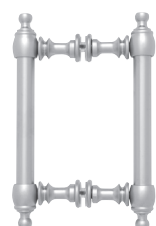
Cat. No. MT8X8
203 mm



Victorian Series

Cat. No. VIC6X6
152 mm

Cat. No. VIC8X8
203 mm



Colonial Series

Cat. No. COL6X6
152 mm

Cat. No. COL8X8
203 mm



Ladder Series

Cat. No. LP6X6
152 mm

Cat. No. LP8X8
203 mm

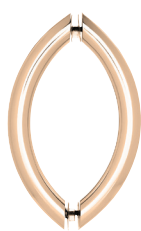


Square Ladder Pull

Cat. No. SLP6X6
152 mm

Cat. No. SLP8X8
203 mm

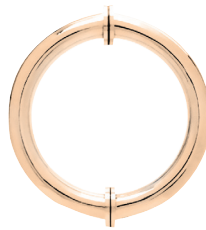
Pull Handles



Crescent Style
Cat. No. CSH6X6
152 mm
Cat. No. CSH8X8
203 mm



Regular Style
Cat. No. SDPR6
152 mm



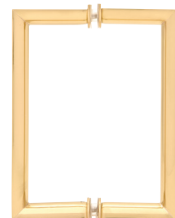
Circular Style
Cat. No. SDPC575
130 mm



Sculptured Style
Cat. No. SSDP6
152 mm
Cat. No. CQ10X10
254 mm



OR Series
Cat. No. OR6X6
152 mm
Cat. No. OR8X8
203 mm



RM Series
Cat. No. RM6X6
152 mm
Cat. No. RM8X8
203 mm



Solid Brass - No Washer
Cat. No. BPD6
152 mm
Cat. No. BPD8
203 mm



Solid Brass with Washer
Cat. No. SPH6
152 mm
Cat. No. SPH8
203 mm



**Solid Brass - Single Sided
No Washer**
Cat. No. BPS6
152 mm
Cat. No. BPS8
203 mm



**Solid Brass - Single Sided
with Washer**
Cat. No. SSP6
152 mm
Cat. No. SSP8
203 mm



Solid Brass - 25 mm Diameter
Cat. No. SBP81
203 mm

Pull Handle Replacement Parts



Cat. No. 30WK
Washer Kit



Cat. No. 30SK
Two End Caps
with Threaded Rod



Cat. No. SQMW10
Metal Washers
for SQ Pulls



Cat. No. SSBM10
Set Screws



Cat. No. BMSK
Washer/Stud Set



Cat. No. BMNWSK
Stud Kit



Cat. No. SQSK
Washers/Stud Kit
for SQ Series



Cat. No. COLSKLP
Low Profile Stud Kit
for Cologne Series



Cat. No. HW058
19 mm Clear Hard Washer



Cat. No. HW059
12.7 mm O.D. x 6.3 mm I.D.



Cat. No. DH114GASK
31.7 mm Clear Gasket

Pull Handle Specifications

Material	Brass
Glass Thickness Range	12, 10, 8, or 6 mm
Hole Diameter Required	12 mm or 18 mm
Center-to-Center Hole Spacing	Varies

CRL | Door Knobs



Crescent Grip Back-to-Back Door Knob - Polished Chrome

Door Knobs



Short Round Door Knob

Cat. No. SDKR2530

Back-to-Back Knob



Long Round Door Knob

Cat. No. SDKR2540

Back-to-Back Knob



Square Knob

Cat. No. SDKSQ

Back-to-Back Knob



Cylinder Style

Cat. No. SDK112

Back-to-Back Knob



Traditional Style

Cat. No. SDK100

Back-to-Back Knob

Cat. No. SDK200

Single Sided Knob



Contemporary Style

Cat. No. SDK106

Back-to-Back Knob

Cat. No. SDK206

Single Sided Knob



Junior Contemporary

Cat. No. SDK107

Back-to-Back Knob

Cat. No. SDKP112
Back-to-Back Knob
with Plastic Sleeve

Cat. No. SDK212
Single Sided Knob

Cat. No. SDKP212
Single Sided Knob

with Plastic Sleeve



Crescent Grip

Cat. No. SDK140

Back-to-Back Knob



Square Style

Cat. No. SDK160

Back-to-Back Knob



Single Sided Square

Cat. No. SDK270

For Mounting on Single-Sided SQ Towel Bars



Ball Style

Cat. No. SDK075

Back-to-Back Knob



Flair Style

Cat. No. SDK053

Back-to-Back Knob



Ribbed Bow Tie

Cat. No. SDK046

Back-to-Back Knob



Standard Bow Tie

Cat. No. SDK109

Back-to-Back Knob



Paddle Style

Cat. No. SDK180

Back-to-Back Knob



Mini Bulb Style

Cat. No. 19MK

Single Sided Knob



Euro Style

Cat. No. SDK120

Back-to-Back Knob



Knob Latches

Cat. No. LAT001

180° Model with J Hook



Crystal Knobs

Cat. No. SDK406CR

Contemporary
Single Sided Knob

Cat. No. SDK400CR

Traditional
Single Sided Knob



Solid Glass Knob

Cat. No. SDK061

Single Sided Knob



Glass Knob

Cat. No. SDK410CR

Back-to-Back Knob

CRL | Towel Bars



MT Series Round Tubing Mitered Corner Towel Bars - Polished Chrome

Towel Bars

BM Series Single-Sided Towel Bar with Metal Washers



Cat. No. BM12
305 mm Towel Bar
Cat. No. BM18
457 mm Towel Bar
Cat. No. BM20
508 mm Towel Bar
Cat. No. BM24
610 mm Towel Bar

Cat. No. BM26
660 mm Towel Bar
Cat. No. BM27
686 mm Towel Bar
Cat. No. BM28
711 mm Towel Bar
Cat. No. BM30
762 mm Towel Bar

BM Series Single-Sided Towel Bar without Metal Washers



Cat. No. BMNW12
305 mm Towel Bar
Cat. No. BMNW18
457 mm Towel Bar
Cat. No. BMNW20
508 mm Towel Bar
Cat. No. BMNW24
610 mm Towel Bar

Cat. No. BMNW26
660 mm Towel Bar
Cat. No. BMNW27
686 mm Towel Bar
Cat. No. BMNW28
711 mm Towel Bar
Cat. No. BMNW30
762 mm Towel Bar

BM Series Back-to-Back Towel Bar with Metal Washers



Cat. No. BM12X12
305 mm Towel Bar
Cat. No. BM18X18
457 mm Towel Bar
Cat. No. BM20X20
508 mm Towel Bar

Cat. No. BM24X24
610 mm Towel Bar
Cat. No. BM30X30
762 mm Towel Bar

BM Series Back-to-Back Towel Bar without Metal Washers



Cat. No. BMNW12X12
305 mm Towel Bar
Cat. No. BMNW18X18
457 mm Towel Bar

Cat. No. BMNW24X24
610 mm Towel Bar
Cat. No. BMNW30X30
762 mm Towel Bar

Towel Bars

MT Series Round Tubing Mitered Corner Single-Sided Towel Bar



Cat. No. MT18
457 mm Towel Bar

Cat. No. MT24
610 mm Towel Bar

MT Series Round Tubing Mitered Corner Back-to-Back Towel Bar



Cat. No. MT18X18
457 mm Towel Bar

Cat. No. MT24X24
610 mm Towel Bar

SQ Series Square Corner Single-Sided Towel Bar



Cat. No. SQ18
457 mm Towel Bar

Cat. No. SQ24
610 mm Towel Bar

SQ Series Square Corner Back-to-Back Towel Bar



Cat. No. SQ18X18
457 mm Towel Bar

Cat. No. SQ24X24
610 mm Towel Bar

SD Series Single-Sided Towel Bar



Cat. No. SDTBS18
457 mm Towel Bar

Cat. No. SDTBS24
610 mm Towel Bar

SD Series Back-to-Back Towel Bar



Cat. No. SDTB12X12
305 mm Towel Bar

Towel Bars

OR Series Oval/Round Single-Sided Towel Bar



Cat. No. OR18
457 mm Towel Bar

Cat. No. OR24
610 mm Towel Bar

OR Series Oval/Round Back-to-Back Towel Bar



Cat. No. OR18X18
457 mm Towel Bar

Cat. No. OR24X24
610 mm Towel Bar

Crescent Series Single-Sided Towel Bar



Cat. No. CSH24
610 mm Towel Bar

Crescent Series Back-to-Back Towel Bar



Cat. No. CSH18X18
457 mm Towel Bar

Cat. No. CSH24X24
610 mm Towel Bar

Colonial Series Single-Sided Towel Bar



Cat. No. COL18
457 mm Towel Bar

Cat. No. COL24
610 mm Towel Bar

Colonial Series Back-to-Back Towel Bar



Cat. No. COL18X18
457 mm Towel Bar

Towel Bars

Ladder Series Single-Sided Towel Bar



Cat. No. LTB18
457 mm Towel Bar

Cat. No. LTB24
610 mm Towel Bar

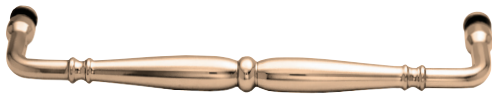
Ladder Series Back-to-Back Towel Bar



Cat. No. LTB18X18
457 mm Towel Bar

Cat. No. LTB24X24
610 mm Towel Bar

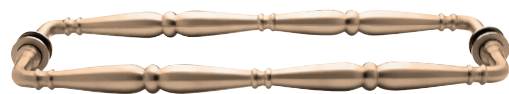
Victorian Series Single-Sided Towel Bar



Cat. No. VIC18
457 mm Towel Bar

Cat. No. VIC24
610 mm Towel Bar

Victorian Series Back-to-Back Towel Bar



Cat. No. VIC18X18
457 mm Towel Bar

Cat. No. VIC24X24
610 mm Towel Bar



BM Series Single-Sided with Metal Washers - Matte Black

CRL | Handle / Towel Bar Combinations



Handle/Towel Bar Combinations

BM Series Pull Handle/Towel Bar Combination with Washers



Cat. No. BM6X12

152 mm Pull /
305 mm Towel Bar

Cat. No. BM6X18

152 mm Pull /
457 mm Towel Bar

Cat. No. BM6X22

152 mm Pull /
559 mm Towel Bar

Cat. No. BM6X24

152 mm Pull /
610 mm Towel Bar

Cat. No. BM8X18

203 mm Pull /
457 mm Towel Bar

Cat. No. BM8X20

203 mm Pull /
508 mm Towel Bar

Cat. No. BM8X22

203 mm Pull /
559 mm Towel Bar

Cat. No. BM8X24

203 mm Pull /
610 mm Towel Bar

Cat. No. BM12X24

305 mm Pull /
610 mm Towel Bar

BM Series Pull Handle/Towel Bar Combination without Washers



Cat. No. BMNW6X12

152 mm Pull /
305 mm Towel Bar

Cat. No. BMNW6X18

152 mm Pull /
457 mm Towel Bar

Cat. No. BMNW6X22

152 mm Pull /
559 mm Towel Bar

Cat. No. BMNW6X24

152 mm Pull /
610 mm Towel Bar

Cat. No. BMNW8X18

203 mm Pull /
457 mm Towel Bar

Cat. No. BMNW8X22

203 mm Pull /
559 mm Towel Bar

Cat. No. BMNW8X24

203 mm Pull /
610 mm Towel Bar

Cat. No. BMNW12X24

305 mm Pull /
610 mm Towel Bar

Ladder Series Pull Handle/Towel Bar Combination Set



Cat. No. LTB6X18

152 mm Pull /
457 mm Towel Bar

Cat. No. LTB6X24

152 mm Pull /
610 mm Towel Bar

Cat. No. LTB8X18

203 mm Pull /
457 mm Towel Bar

Cat. No. LTB8X24

203 mm Pull /
610 mm Towel Bar

SD Series Tubular Brass Pull Handle/Towel Bar Combination Set



Cat. No. SDP6TB24

152 mm Pull /
610 mm Towel Bar

Handle/Towel Bar Combinations

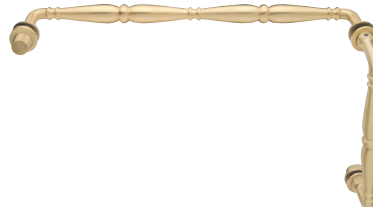
Colonial Series Pull Handle/Towel Bar Combination Set



Cat. No. COL6X18
152 mm Pull /
457 mm Towel Bar

Cat. No. COL6X24
152 mm Pull /
610 mm Towel Bar

Victorian Series Pull Handle/Towel Bar Combination Set



Cat. No. VIC6X18
152 mm Pull /
457 mm Towel Bar

Cat. No. VIC6X24
152 mm Pull /
610 mm Towel Bar
Cat. No. VIC8X24
203 mm Pull /
610 mm Towel Bar

SQ Series Square Corner Pull Handle/Towel Bar Combination Set



Cat. No. SQ6X18
152 mm Pull /
457 mm Towel Bar

Cat. No. SQ6X24
152 mm Pull /
610 mm Towel Bar

Cat. No. SQ8X18
203 mm Pull /
457 mm Towel Bar

Cat. No. SQ8X24
203 mm Pull /
610 mm Towel Bar

MT Series Round Tubing With Mitered Corners Pull Handle/Towel Bar Combination Set



Cat. No. MT6X18
152 mm Pull /
457 mm Towel Bar

Cat. No. MT6X24
152 mm Pull /
610 mm Towel Bar

Cat. No. MT8X18
203 mm Pull /
457 mm Towel Bar

Cat. No. MT8X24
203 mm Pull /
610 mm Towel Bar

Towel Bar/Knob Combinations



Cat. No. TBCC18
457 mm Towel Bar
with Knob

Cat. No. TBCC24
610 mm Towel Bar
with Knob

Towel Bar/Knob Combinations



Cat. No. TBCT18
457 mm Towel Bar
with Knob

Cat. No. TBCT24
610 mm Towel Bar
with Knob

Handle/Towel Bar Combinations

Wall Mount Towel Bar



Cat. No. WTB18
457 mm Towel Bar

Wall Mount Towel Bar



Cat. No. WTB24
610 mm Towel Bar

Acrylic Back-to-Back Towel Bar



Cat. No. CAP6X6
152 mm
Back-to-Back Pull Handle

Cat. No. CAP8X8
203 mm
Back-to-Back Pull Handle

CRL | Grab Bars



Straight Round Grab Bar - Polished Stainless

Grab Bars

Designer Grab Bars 35 mm Diameter



Cat. No. GBA18
457 mm Straight
Round Grab Bar

Cat. No. GBA24
610 mm Straight
Round Grab Bar

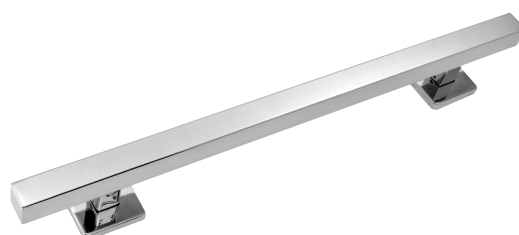


Cat. No. GBB18
457 mm Mitered
Round Grab Bar

Cat. No. GBB24
610 mm Mitered
Round Grab Bar

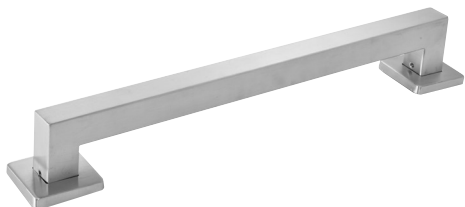


Cat. No. GBC24
610 mm "S"
Round Grab Bar



Cat. No. GBD18
457 mm Straight
Square Grab Bar

Cat. No. GBD24
610 mm Straight
Square Grab Bar



Cat. No. GBE18
457 mm Mitered
Square Grab Bar

Cat. No. GBE24
610 mm Mitered
Square Grab Bar



Cat. No. GBF18
457 mm "S"
Square Grab Bar

CRL | Glass Clamps, Brackets and U-Channels



Standard 180° & 135° Glass-to-Glass Clamps - Brushed Nickel

Square Style Heavy-Duty Glass Clamps



Cat. No. SGCWM
Wall-to-Glass Economy
(Hole-In-Glass, Large Leg)



Cat. No. SGC50
Wall-to-Glass 45mm plate
(Hole-In-Glass, Large Leg)



Cat. No. SGC90D
90° Glass-to-Glass
Economy (Hole-In-Glass)



Cat. No. SGC180D
180° Glass-to-Glass
Economy (Hole-In-Glass)



Cat. No. SGC135D
135° Glass-to-Glass
Economy (Hole-In-Glass)



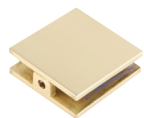
Cat. No. SGC180WM
180° Glass-to-Wall
Economy (Hole-In-Glass)



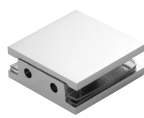
Cat. No. SGC037
Fixed Panel Clamp
(with Small Leg)



Cat. No. SGC039
Fixed Panel Clamp
(with Large Leg)



Cat. No. SCU4
Wall Mount Clamp
(Hole-In-Glass)



Cat. No. SGCU1
Wall Mount Clamp
(Notch-In-Glass)



Cat. No. SGC186
Wall Mount
Movable Transom



Cat. No. SGC182
"Y" Inline Glass



Cat. No. SGC180
180° Glass-to-Glass



Cat. No. SGC90
90° Glass-to-Glass



Cat. No. SGC0F90
90° Glass-to-Glass
"Open Face"



Cat. No. SGC90T
90° Glass-to-Glass
"T" Junction



Cat. No. SGC135
135° Glass-to-Glass



Cat. No. SGC188
180° Glass-to-Glass
Movable Transom



Cat. No. SCU4G
Replacement Gasket
for Hole in Glass



Cat. No. SGCU1G
Replacement Gasket
for Notch in Glass

No Drill Clamps



Cat. No. SGCND
No Drill Clamp
(10mm Glass)



Cat. No. SGCNDL
No Drill Clamp With Leg
(10mm Glass)



Cat. No. SGCNDL180
No Drill Clamp with 180°
Inline Leg (10 mm Glass)



Cat. No. SGCND12
No Drill Clamp
(12mm Glass)



Cat. No. SUPA10
Overhead Panel Support
Clamp (8 or 10 mm Glass)



Cat. No. NDC4
Double Screw No Drill
Clamp (8 or 10 mm Glass)

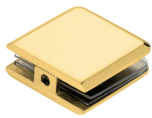


Cat. No. FA12
Rounded Shelf Clamp
(6 to 10 mm Glass)



Cat. No. FA10
Small Shelf Clamp
(6 to 10 mm Glass)

Beveled Style Heavy-Duty Glass Clamps



Cat. No. BCU4
Wall Mount Clamp
(Hole-In-Glass)



Cat. No. BGCUI1
Wall Mount Clamp
(Notch-In-Glass)



Cat. No. BGC037
Fixed Panel Clamp
(with Small Leg)



Cat. No. BGC039
Fixed Panel Clamp
(with Large Leg)



Cat. No. BCU4G
Replacement Gasket
for Hole in Glass



Cat. No. BGCUI1G
Replacement Gasket
for Notch in Glass



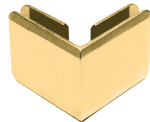
Cat. No. BGC182
"Y" Inline Glass



Cat. No. BGC180
180° Glass-to-Glass



Cat. No. BGC135
135° Glass-to-Glass



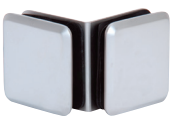
Cat. No. BGC90
90° Glass-to-Glass



Cat. No. BGC186
Wall Mount
Movable Transom



Cat. No. BGC188
180° Glass-to-Glass
Movable Transom



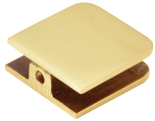
Cat. No. EST111
90° Glass-to-Glass
"Open Face"



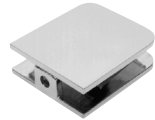
Cat. No. BGC90T
90° Glass-to-Glass
"T" Junction

Traditional Glass Clamps

Traditional Glass Clamps are designed to secure glass panels in contemporary shower enclosures. They assist in maintaining the frameless appearance, and provide a clean looking alternative to U-Channels. All Traditional Clamps feature solid brass construction and a variety of finishes to match our complete line of Shower Door Hinges. Appropriate mounting screws and one set of clear gaskets are included with each Clamp. Extra Cat. No. UCG77 Clear Gaskets (2 per pack) may be ordered separately.



Cat. No. UC77
Standard Fixed Panel
U-Clamp



Cat. No. UC79
Oversized Fixed Panel
U-Clamp



Cat. No. GCB90
Standard
90° Glass Clamp



Cat. No. GCB91
Oversized
90° Glass Clamp



Cat. No. GCB135
Standard
135° Glass Clamp



Cat. No. GCB180
Standard
180° Glass Clamp



Cat. No. GCB184
180° Double Stud
Glass Clamp



Cat. No. GCB182
180° Split Face and
"Y" Inline Clamp

Adjustable Glass Clamps

Solid brass Adjustable Glass Clamps are designed to secure glass panels in contemporary shower enclosures. They assist in maintaining the frameless appearance, and provide a clean-looking alternative when a wall is not at 90° to the fixed panel, or the glass-to-glass application is not a standard angle. This range of glass clamps can accommodate 1/2", 10 mm, or 8 mm (12, 10, or 8 mm) glass.



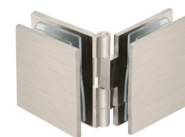
Cat. No. ADJ037
Adjustable
Wall Mount Clamp



Cat. No. ADJ180
Adjustable
Glass-to-Glass Clamp



Cat. No. ADJSQ037
Adjustable Square
Wall Mount Clamp



Cat. No. ADJSQ180
Adjustable Square
Glass-to-Glass Clamp



Cat. No. ADJBEV037
Adjustable Beveled
Wall Mount Clamp



Cat. No. ADJBEV180
Adjustable Beveled
Glass-to-Glass Clamp

Glass Brackets

Wall Mount and 90° Glass-to-Glass Brackets match the look of many of our most popular hinge series. Solid brass brackets come with gaskets; wall mount brackets have gaskets and mounting screws.



Cat. No. GE90S
Geneva
Wall Bracket



Cat. No. GE090
Geneva
90° Glass-to-Glass



Cat. No. GE90SCP
Geneva Cover Plates
for GES Clamp



Cat. No. ME90S
Melbourne
Wall Bracket



Cat. No. P190S
Pinnacle
Wall Bracket



Cat. No. P1090
Pinnacle
90° Glass-to-Glass



Cat. No. R090S
Roman
Wall Mount

“Sleeve Over” Glass Clamps

“Sleeve Over” Glass Clamps provide a mechanical fastener to assist with the shear forces placed on the glass panels. They also hold the glass panels in position while the applied silicone sealant in the joint cures. Clamps are secured in place by nylon tipped Allen set screws.



Cat. No. SOGC37L
Left Hand
Wall Mount Clamp



Cat. No. SOGC37R
Right Hand
Wall Mount Clamp



Cat. No. SOGC01
Ceiling Mount Clamp



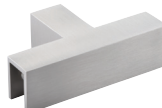
Cat. No. SOGC91
Adjustable
90° to 180° Clamp



Cat. No. SOGC90
90° Clamp



Cat. No. SOGC135
135° Clamp



Cat. No. SOGCT90
90° Clamp
“T” Junction

U-Channels

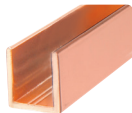
Fixed Panel Regular and Deep U-Channels are used to securing fixed panels of tempered glass to the wall, ceiling or floor. Widths suitable for 10 or 12 mm glass are available in each style, and are individually wrapped to protect the finish.

Available Finishes: Bright Anodised, Satin Anodised, Matt Black, Brushed Nickel, Satin Brass, Bright Gold Anodised, Antique Brass, Oil Rubbed Bronze, White (Gloss), Polished Gun Metal, Black (Gloss), Brushed Anodised, Antique Brushed Nickel, Polished Nickel, Satin Nickel, Brushed Bronze, Polished Stainless, Brushed Stainless, Polished Copper.

Fixed Panel Deep U-Channel



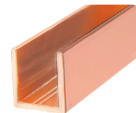
Cat. No. SDCD38
2.41 m Stock Length
for 10 mm glass



Cat. No. SDCD12
2.41 m Stock Length
for 12 mm glass

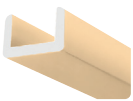


Cat. No. SDCD3812
3.65 m Stock Length
for 10 mm glass

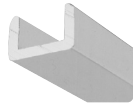


Cat. No. SDCD1212
3.65 m Stock Length
for 12 mm glass

Fixed Panel Regular U-Channel

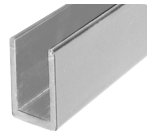


Cat. No. SDCR38
2.41 m Stock Length
for 10 mm glass



Cat. No. SDCR12
2.41 m Stock Length
for 12 mm glass

Fixed Panel Extended U-Channel



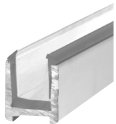
Cat. No. SDCE38
2.41 m Stock Length
for 10 mm glass

U-Channel End Caps



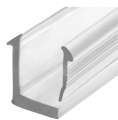
Cat. No. SDCEC38
End Cap
for 10 mm glass

U-Channel for Recessed Applications



Cat. No. DUC38
2.41 m Stock Length
for 10 mm glass

Cat. No. DUC516
2.41 m Stock Length
for 8 mm glass



Cat. No. FV4DUC
10 mm Flexible
Replacement 2.41 m Vinyl

Cat. No. RV4DUC
10 mm Rigid
Replacement 2.41 m Vinyl



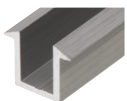
Cat. No. FV8DUC
8 mm Flexible
Replacement 2.41 m Vinyl

Cat. No. RV8DUC
8 mm Rigid
Replacement 2.41 m Vinyl

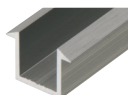


Cat. No. SDCEC12
End Cap
for 12 mm glass
Additionally suits DUC38

Dry Glaze U-Channel with Vinyls



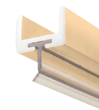
at. No. SDCF38
2.41 m Stock Length
for 10 mm glass



at. No. SDCF12
2.41 m Stock Length
for 12 mm glass



Cat. No. SDW38
2.41 m Stock Length
for 10 mm glass



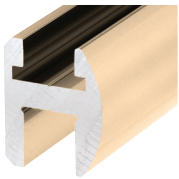
Cat. No. SDW12
2.41 m Stock Length
for 12 mm glass



Deluxe Shower Door Headers

The Deluxe Shower Header Kit provides additional support and a level of safety while securing glass panels not reaching the ceiling. Deluxe Header Kits are designed to allow installers to do in-house fabrication using a selection of component parts. Sold in 1670 mm, 2490 mm or 3650 mm lengths, each header extrusion has a narrow 32 mm face to minimize the visible sight line. 90°, 135° or adjustable corners are sold separately for angled installations. BWB2 Brass Wall Brackets are included in each kit.

Deluxe Shower Door Header Kits



SDH660

1670 mm SDH Series Flat/Round

SDH980

2490 mm SDH Series Flat/Round

SDH144

3650 mm SDH Series Flat/Round



SQH980

2490 mm SQH Series Flat/Flat

Each Deluxe Header Kit Contains:

1 - 1670 mm, 2490 mm or 3650 mm piece of Header Extrusion

1 - 914 mm piece of SIF360 Snap-In Filler for door pocket

1 - 2490 mm length of HV380 Vinyl for 10 mm thick glass, and 2490 mm length of HV516 Vinyl for 8 mm thick glass. Vinyl not required for 12 mm thick glass as a tight fit already exists.

Deluxe Header Kit Accessories



Cat. No. HV380

Header Vinyl for 10 mm Glass



Cat. No. HV516

Header Vinyl for 8 mm Glass



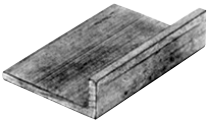
Cat. No. BHC90

90 Degree Brass Header Corner



Cat. No. BHC135

135 Degree Brass Header Corner



Cat. No. SHB225

2-1/4" (57 mm) Aluminum Blank Wall Mounting Bracket



Cat. No. BWB2

Brass Wall Mounting Brackets



Cat. No. HAB01

Adapter Block



Cat. No. SRHAB01

Senior Adapter Block

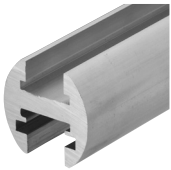


EZ-Adjust Header - Brushed Nickel

EZ-Adjust Shower Door Header

The EZ-Adjust Shower Door Header Kit provides a safe and beautiful frameless shower installation by securing enclosures that do not reach the ceiling. The EZ-Adjust System allows adjustability after installation in that the hinge (PPH06 or SRPPH06 only) can be moved left and right as desired. No drilling through the Header is required for an adaptor block if using Prima Hinge Model PPH06 or Senior Prima Hinge Model SRPPH06, due to a built-in adaptation to the hinges. A choice of 2490 mm and 3650 mm stock lengths can be cut as desired.

EZ-Adjust Shower Door Header Kit



EHK98

2490 mm Kit

EHK144

3650 mm Kit

Each EZ-Adjust Header Kit Contains

- 1 - 2490 mm or 3650 mm Length of Header Extrusion
- 1 - 914 mm EHF360 Snap-In Filler Insert for Door Pocket
- 1 - BWB2 Deluxe Wall Mount Bracket Kit (Two Brackets Per Pack)
- 1 - V4EHK 2490 mm Length of 8 and 10 mm Clear Vinyl.
Vinyl is not required for 12 mm thick glass.

Shower Door Thresholds



Cat. No. SIL001

Tapered Style
2490 mm



Cat. No. WBCHSQ

Square Style
2000 mm



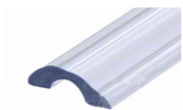
Cat. No. SDT980

Half Round Style
2490 mm



Cat. No. WB

Half Round Style
2000 mm



Cat. No. SDT980CLR

Half Round Style Clear Acrylic
2490 mm

CRL | Support Bars



Glass-to-Glass Support Bar - Polished Chrome

Support Bars

Fixed Panel Support Bars stabilize fixed panels of tempered glass in enclosures that do not go all the way up to the ceiling. Nylon-tipped set screws secure the glass and prevent glass-to-metal contact.

Fixed Panel Support Bars



Cat. No. SUP06

Fixed Panel Wall-To-Glass Support Bar for 6 to 8 mm Glass

Cat. No. SUP10

Fixed Panel Wall-To-Glass Support Bar for 10 to 12 mm Glass



Cat. No. SUP26

Fixed Panel Glass-To-Glass Support Bar for 6 to 8 mm Glass

Cat. No. SUP20

Fixed Panel Glass-To-Glass Support Bar for 10 to 12 mm Glass



Cat. No. SUP135

Fixed Panel Wall-To-Glass Support Bar for 6 to 12 mm Glass

Cat. No. SUP135G2G

Fixed Panel Glass-To-Glass Support Bar for 6 to 12 mm Glass

Support Bar Accessories and Replacement Parts

Cat. No. S1

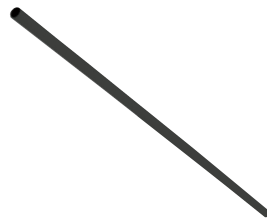
Support Bar Only 1000 mm Bar

Cat. No. S2

Support Bar Only 1300 mm Bar

Cat. No. S80

Support Bar Only 2030 mm Bar



Cat. No. TUBE3472

Thru-Glass-to-Wall Rod 1830mm



Cat. No. S4

Adjustable U-Bracket for 6 to 8 mm Glass

Cat. No. S5

Adjustable U-Bracket for 10 to 12 mm Glass



Cat. No. S9

Vertical Support Bracket for 6 mm Glass

Cat. No. S910

Vertical Support Bracket for 10 to 12 mm Glass



Cat. No. S13

Adjustable Glass Mount Fitting for 6 to 12 mm Glass



Cat. No. S6

Moveble Glass U-Bracket for 6 to 8 mm Glass

Cat. No. S7

Moveble Glass U-Bracket for 10 to 12 mm Glass



Cat. No. SBB45

Mitered 45° Wall Mount Support Bar Bracket



Cat. No. S14

Wall Mount Top Fitting



Cat. No. S3

Wall Mount Support Bar Bracket



Cat. No. S12

Slim Line Wall Mount Fitting



Square Support Bar - Polished Chrome

SquareSupport Bars

The Square Support Bar complements many CRL square corner style hinges. The bar stabilizes fixed panels of glass in enclosures that do not go to the ceiling. After ordering the bar itself, choose from a number of various fittings to complete the desired application. The fittings come with nylon-tipped set screws that secure the glass and prevent metal-to-metal contact. Finishes are available to match many popular decors. No holes or cut-outs are required in the glass.

Square Support Bar Accessories and Replacement Parts



Cat. No. SQ39
1000 mm
Square Bar Only



Cat. No. SQ59
1500 mm
Square Bar Only



Cat. No. SQ41
Swiveling U-Bracket
for 6 or 8 mm Glass



Cat. No. SQ42
Swiveling U-Bracket
for 10 or 12 mm Glass



Cat. No. SQ43
Movable Bracket
for 6 or 8 mm Glass



Cat. No. SQ44
Movable Bracket
for 10 or 12 mm Glass



Cat. No. SQ46
Wall Mount Bracket



Cat. No. SQ47
45° Mitered
Wall Mount Bracket



Cat. No. SQ910
Fixed Panel
Top Edge Bracket
for 10 or 12 mm



Cat. No. SQ9
Fixed Panel
Top Edge Bracket
for 6 or 8 mm



Cat. No. SQ49
Adjustable
Wall Mount Bracket



Cat. No. SQ50
"T" Junction Bracket

CRL | Water Seals and Sweeps



Strike and Door Jamb Seals for 180° Application

Water Seals and Sweeps



Clear Co-Extruded Bottom Wipe with Drip Rail

Cat. No. P914WS

6 mm Glass

Cat. No. P956WS

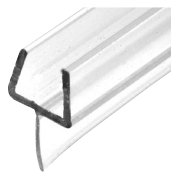
8 mm Glass

Cat. No. P990WS

10 mm Glass

Cat. No. P912WS

12 mm Glass



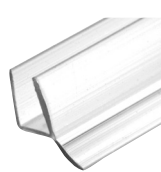
One-Piece Bottom Rail with Clear Wipe

Cat. No. P501BR

10 mm Glass

Cat. No. P661BR

12 mm Glass



Dual Durometer PVC Seal with Wipe

Cat. No. P14WS

6 mm Glass

Cat. No. P770WS

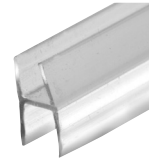
8 mm Glass

Cat. No. P880WS

10 mm Glass

Cat. No. P120WS

12 mm Glass



Multi-Purpose "H" Wipe

Cat. No. P250HW

6 mm Glass

Cat. No. P312HW

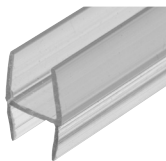
8 mm Glass

Cat. No. P375HW

10 mm Glass

Cat. No. P500HW

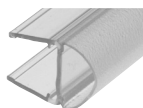
12 mm Glass



Multi-Purpose "H" Wipe with "Extra Soft" Twin Legs

Cat. No. P375HWS

10 mm Glass



Polycarbonate 'U' with Bulb Attachment

Cat. No. PCR8

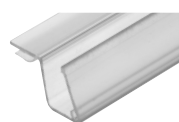
8 mm Glass

Cat. No. PCR10

10 mm Glass

Cat. No. PCR12

12 mm Glass



90 Degree Strike Side Seal

Cat. No. PCJ8

8 mm Glass

Cat. No. PCJ10

10 mm Glass



'U' Seal with Leg and Vinyl Insert at 90 Degrees

Cat. No. P090SJ

10 mm Glass



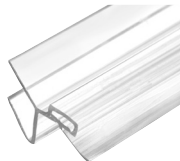
135 Degree Door Jamb Seal

Cat. No. P045DJ

8 mm Glass

Cat. No. P135DJ

10 mm Glass



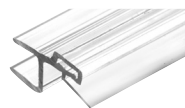
135 Degree Strike Jamb Seal

Cat. No. P045SJ

8 mm Glass

Cat. No. P135SJ

10 mm Glass



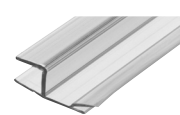
Strike and Door Jamb Seals for 180 Degree Application

Cat. No. P180SDJ

10 mm Glass

Cat. No. P120SDJ

12 mm Glass

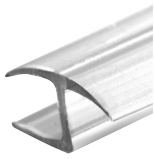


Strike and Door Jamb Seals for 180 Degree Application

Cat. No. P1801P

10 mm Glass

Water Seals and Sweeps



Polycarbonate H-Jamb 180 Degree

Cat. No. P140HJ

6 mm Glass

Cat. No. P516HJ

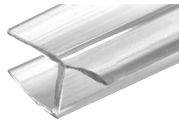
8 mm Glass

Cat. No. P380HJ

10 mm Glass

Cat. No. P120HJ

12 mm Glass



'Y' Jamb Seal with Soft Leg

Cat. No. PCC8

8 mm Glass

Cat. No. PCC10

10 mm Glass

Cat. No. PCC12

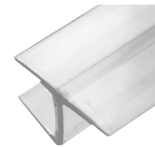
12 mm Glass



'H' Jamb Seal with Cushion Fin for 180 Degree Application

Cat. No. PCK8

8 mm Glass



Polycarbonate H-Jamb 180 Degree for 10 mm Glass

Cat. No. P10MMHJ

10 mm Glass



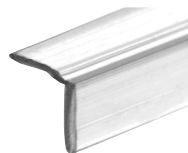
Multi-Purpose Clear 'L' Angle Jamb Seal for 6 to 12 mm Glass

Cat. No. P12LJ

6 to 12 mm

Cat. No. P12LJT2

12 mm with Tape



Translucent Vinyl 'L' Seal

Cat. No. SDTNL

8 mm

Cat. No. SDTL

10 mm

Cat. No. SDTNLT2

8 mm with Tape

Cat. No. SDTLT2

10 mm with Tape



Translucent Vinyl Double Fin Seal 8 mm Maximum Gap

Cat. No. SDTDF

8 mm

Cat. No. SDTDFT2

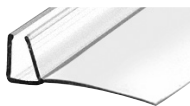
8 mm with Tape



Clear PVC Vinyl 'T' Seal

Cat. No. V600CSGFT

Sold in increments of 100'



Polycarbonate Water Seal and Sweep Profile Set

Cat. No. PC0890

8 mm Glass

Cat. No. PC1090

10 mm Glass

Cat. No. PC1200

12 mm



Clear Bottom Rail with Translucent Wipe

Cat. No. P450BR

8 mm Glass

Cat. No. P500BR

10 mm Glass

Cat. No. P660BR

12 mm



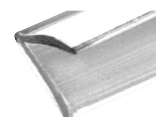
Translucent Vinyl Edge 'T' Wipe for 11 mm Maximum Gap

Cat. No. SDTW

11 mm

Cat. No. SDTWT2

11 mm with Tape



Translucent Vinyl Edge 'V' Seal for 6 mm Maximum Gap

Cat. No. SDTS

6 mm

Cat. No. SDTST2

6 mm with Tape

Water Seals and Sweeps



Translucent Vinyl Bulb Seal

Cat. No. SDTJ

4 mm

Cat. No. SDTB

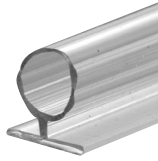
5.6 mm

Cat. No. SDTJT2

4 mm with Tape

Cat. No. SDTBT2

5.6 mm with Tape



Translucent Vinyl Bulb Seal 10 mm Gap

Cat. No. SDLB

10 mm



Translucent Silicone Bulb Seal

Cat. No. SILB

5 mm

Cat. No. SILBT2

5 mm with Tape



45 Degree LH Magnetic Profile for Glass-to-Glass fits 6 to 8 mm Glass

Cat. No. PMA8

6 to 8 mm Glass



45 Degree RH Magnetic Profile for Glass-to-Glass fits 6 to 8 mm Glass

Cat. No. PMB8

6 to 8 mm Glass



90 Degree Magnetic Profile for Glass-to-Glass fits 6 to 8 mm Glass

Cat. No. PMC8

6 to 8 mm Glass



45 Degree LH Magnetic Profile for Glass-to-Glass Fits 10 to 12 mm Glass

Cat. No. PMA10

10 to 12 mm Glass



45 Degree RH Magnetic Profile for Glass-to-Glass fits 10 to 12 mm Glass

Cat. No. PMB10

10 to 12 mm Glass

Magnetic Profiles

For 6 to 8 mm Thick Glass

Angle

180°
180°
135°
90°

Profiles Required

PMA8 + PMA8
PMC8 + PMC8
PMA8 + PMC8
PMA8 + PMB8

Configuration

Door swings in one direction only
Door swings in both directions
Door swings out only
Reverse for polarity-door swings out only



90 Degree Magnetic Profile for Glass-to-Glass Fits 10 to 12 mm Glass

Cat. No. PMC10

10 to 12 mm Glass

For 10 to 12 mm Thick Glass

Angle

180°
180°
135°
90°

Profiles Required

PMC10 + PMA10
PMA10 + PMC10
PMA10 + PMC10
PMA10 + PMB10

Configuration

Door swings in one direction only
Door swings in both directions
Door swings out only
Reverse for polarity-door swings out only

Accessories

No Drill 180° Glass Mount Doorstops



Cat. No. DSSQ1
Square Style Door Stop
6 to 10 mm Glass



Cat. No. DSBEV1
Beveled Style Door Stop
6 to 10 mm Glass

Desinger Robe Hooks



Cat. No. DRH1
Through-Glass
Robe Hook
8 to 12 mm Glass



Cat. No. SORH1
Sleeve-Over
Robe Hook
8 to 12 mm Glass

Glass Mount Privacy Lock



Cat. No. GE90SCA
Square Style Lock
10 to 12 mm Glass



Cat. No. GE90SCB
Square Style Receiver
10 to 12 mm Glass

Glass Mount Swinging Door Lock



Cat. No. 700C
Rounded Style Lock
10 to 12 mm Glass



Cat. No. 701C
Rounded Style Receiver
10 to 12 mm Glass

Glass Mount Sliding Door Lock

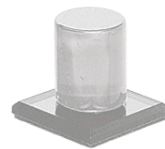


Cat. No. 703C
Rounded Style Lock
10 to 12 mm Glass



Cat. No. 704C
Rounded Style Receiver
10 to 12 mm Glass

Stick-On Knobs & Pulls



Cat. No. MKC1
Stick-On Clear Acrylic
Mirror Knob



Cat. No. FP88
Stick-On Finger Pull
Ideal for Sliding Doors

Toilet Paper Roll Holder



Cat. No. TPH1
Hole-in-Glass
8 to 12 mm Glass

Deluxe Chrome Shower Squeegee



Cat. No. 17600
Beveled Style Lock
10 to 12mm Glass



Vienna Hinges & 90° Glass-to-Glass "Open Face" Clamp - Polished Chrome



Call on 1800 424 275

Fax on 1800 813 013

Melbourne

42 Enterprise Drive

Rowville

VIC 3178

Tel. +61 3 9764 8322

Sydney

9 Shale Place

Eastern Creek

NSW 2766

Tel. +61 2 9851 3444

Enquiries

Email: crlaus@crlaurence.com

www.crlaurence.com.au

CRL[®]