



TILT-LOCK ADJUSTABLE BALUSTRADE SYSTEM

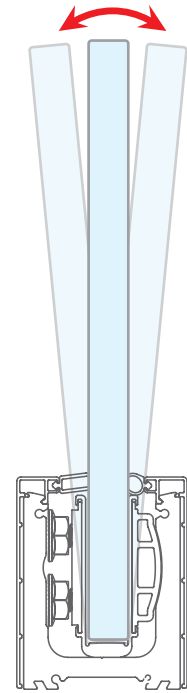
CATTL 04 24 ZD

TILT-LOCK

TILT-LOCK ADJUSTABLE CHANNEL SYSTEM

- High Strength, Pure Aluminium Construction
- Systems Available for 12 mm, 13.52 mm, 15.04 mm, 17.52 mm, 21.52 mm & 25.52 mm Glass
- Available in Silver Brushed Anodized & Black Brushed Anodized
- Available in Top, Side and Recessed Fixed Applications
- Faster Easier Installation
- Patented Rotating Pressure Plate System
- 30 mm Tilt Adjustment Back and Forward
- Tilt Adjustment from One Side
- Ready to Install with Predrilled Holes
- All Concealed Fixings
- Comprehensively Tested & Engineered

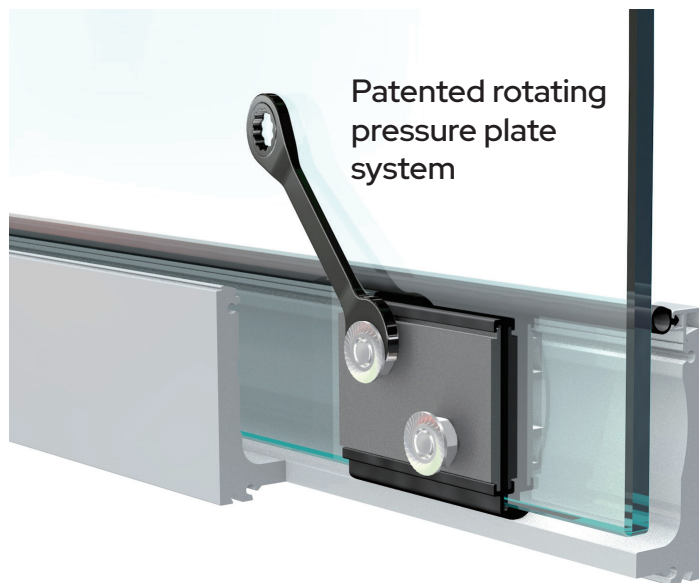
Up To 30 mm Tilt
Adjustment
Back & Forward



TILT-LOCK ADJUSTMENT FROM ONE SIDE FOR PERFECT ALIGNMENT

Align the glass by adjusting the top and bottom nut, loosen the bottom and tighten the top nut to tilt the glass back and the reverse to tilt the glass forward with up to 30mm of adjustment.

This will allow the alignment of the glass by up to 3 times faster than other systems.

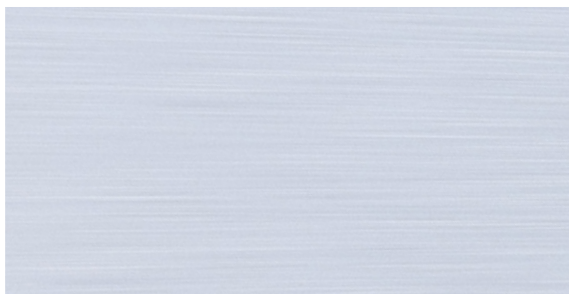


PATENTED GLASS SYSTEMS

- Australian Patent No. 2014328827
- New Zealand Patent No. 700501
- US Patent No. 10,030,393
- Chinese Patent No. 201480064808.4
- European Patent No. 3049590
- Canadian Patent No. 2,962,407

Available in Two Popular Finishes

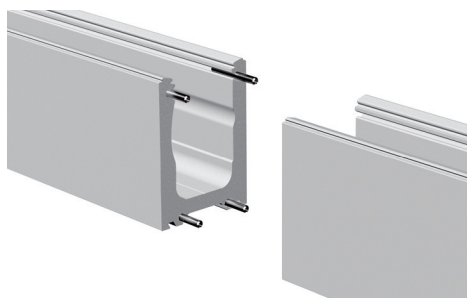
Silver Brushed Anodized



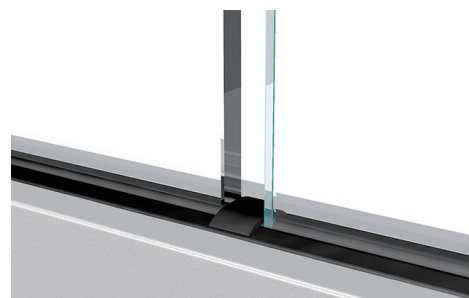
Black Brushed Anodized



Joining Pin - Perfect joiner

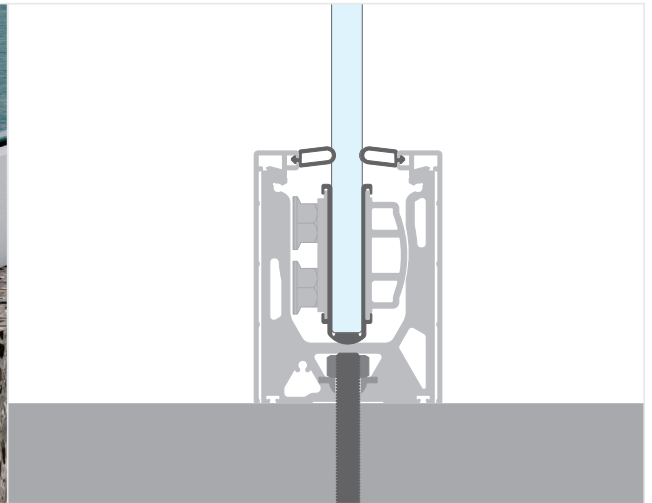
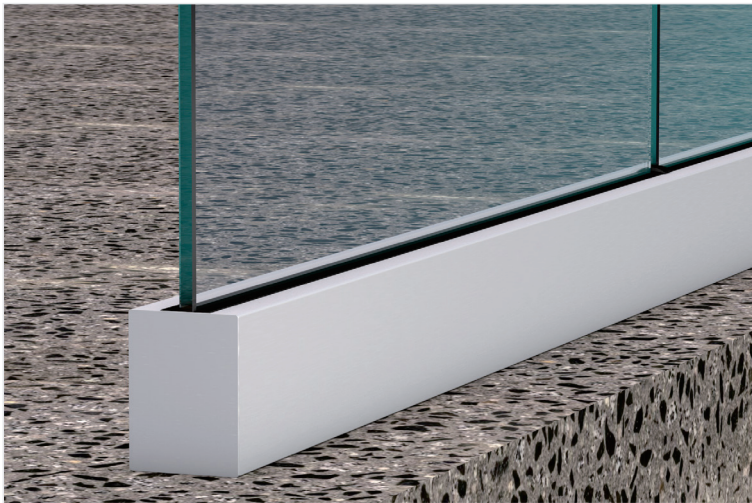


EPDM Divider Designed to Expell Water and Dirt

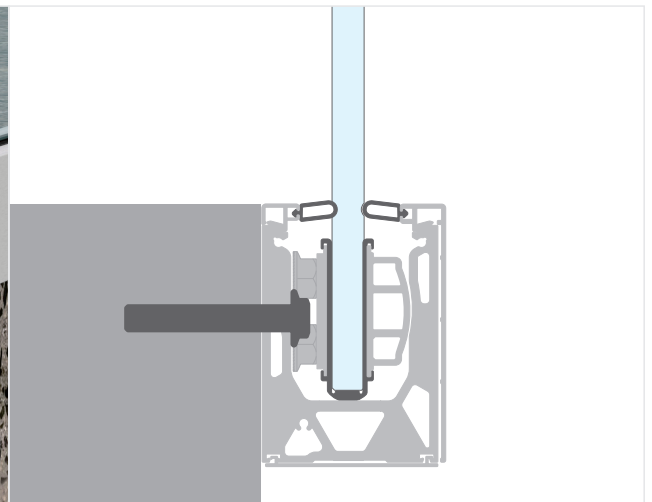
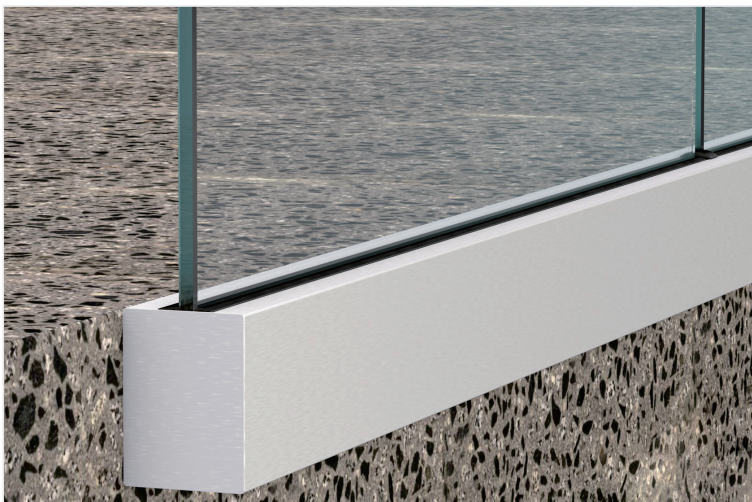


TILT-LOCK CHANNEL INSTALLATION APPLICATIONS

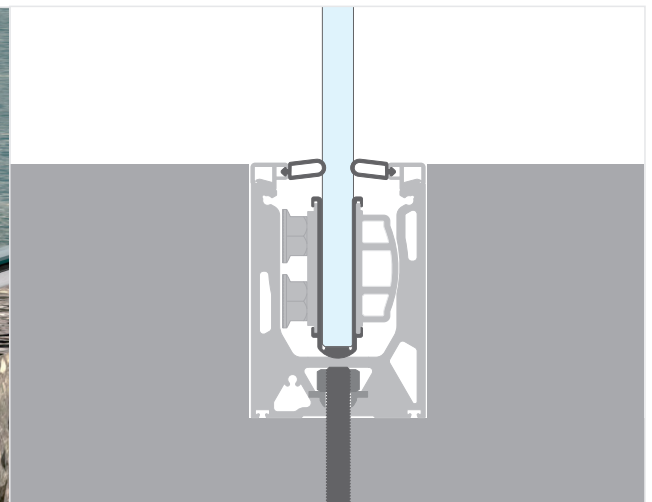
Top Fixed Application



Side Fixed Application



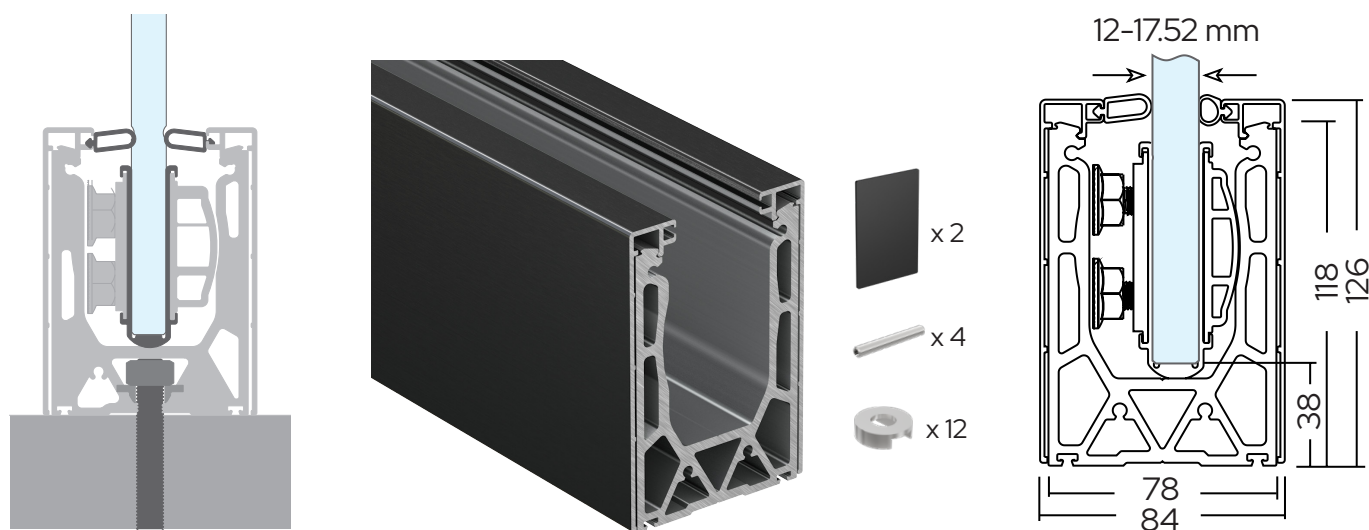
Recessed Application





TILT-LOCK CHANNEL KITS FOR 12MM TO 17.52MM GLASS

TILT-LOCK TOP FIX 3600 MM CHANNEL KIT 12 - 17.52 MM GLASS



CAT. NO.

FINISHES

TLTC1217SBA

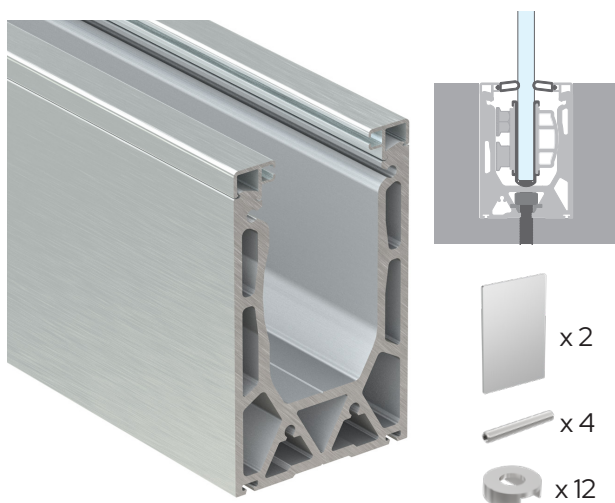
Silver Brushed Anodized

TLTC1217BBA

Black Brushed Anodized

* 12 Fixing Holes Per 3.6 m Length

TILT-LOCK RECESS FIX 3600 MM CHANNEL KIT 12 - 17.52 MM GLASS



CAT. NO.

FINISHES

TLRC1217SBA

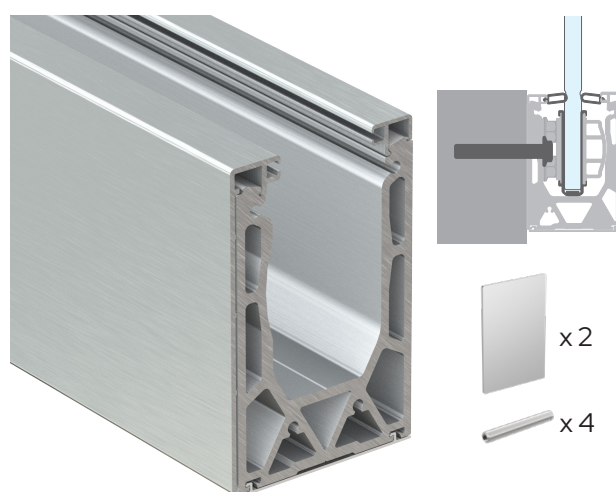
Silver Brushed Anodized

TLRC1217BBA

Black Brushed Anodized

* 12 Fixing Holes Per 3.6 m Length

TILT-LOCK SIDE FIX 3600 MM CHANNEL KIT 12 - 17.52 MM GLASS



CAT. NO.

FINISHES

TLSC1217SBA

Silver Brushed Anodized

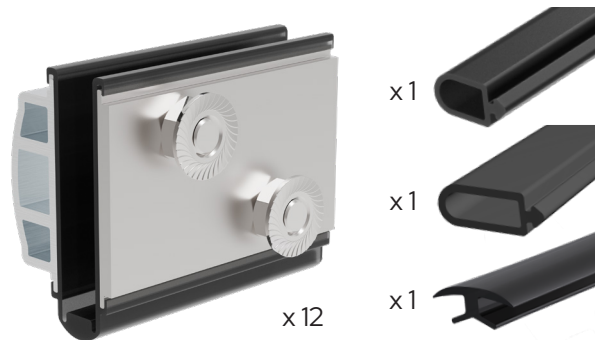
TLSC1217BBA

Black Brushed Anodized

* 12 Fixing Holes Per 3.6 m Length

TILT-LOCK CLAMP KITS FOR 12MM TO 17.52MM GLASS

TILT-LOCK GLASS CLAMP KIT FOR 12 MM - 13.52 MM GLASS

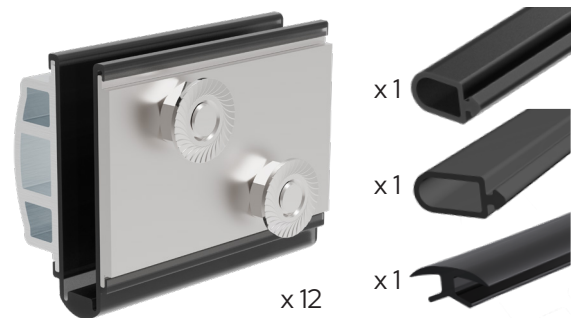


CAT. NO.

TLCK1213

12 x 12-13.52 mm Glass Clamps
1 x Inside Rubber 3600 mm
1 x Outside Rubber 3600 mm
1 x Between Glass Rubber 200 mm

TILT-LOCK GLASS CLAMP KIT FOR 14.28 MM - 15.52 MM GLASS

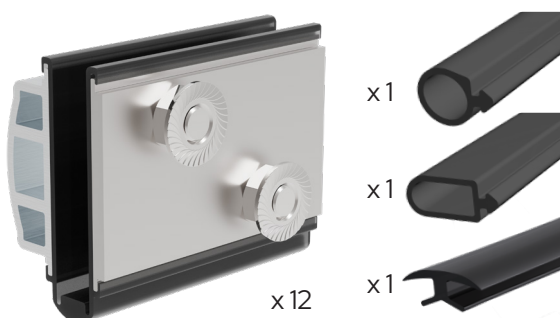


CAT. NO.

TLCK1415

12 x 14.28-15.52 mm Glass Clamps
1 x Inside Rubber 3600 mm
1 x Outside Rubber 3600 mm
1 x Between Glass Rubber 200 mm

TILT-LOCK GLASS CLAMP KIT FOR 16.76 MM - 17.52 MM GLASS

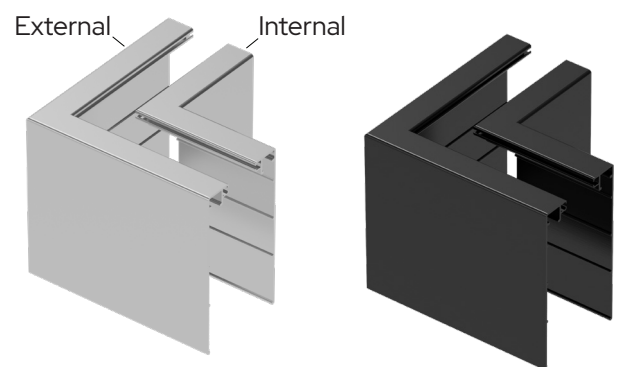


CAT. NO.

TLCK1617

12 x 16.76-17.52 mm Glass Clamps
1 x Inside Rubber 3600 mm
1 x Outside Rubber 3600 mm
1 x Between Glass Rubber 200 mm

TILT-LOCK 90° CORNER TOP FIX MITRED CLADDING SECTIONS



CAT. NO.

DESCRIPTION

TL1217901CSBA

90° Internal Cover Silver

TL1217901CBBA

90° Internal Cover Black

TL121790ECSBA

90° External Cover Silver

TL121790ECBBA

90° External Cover Black

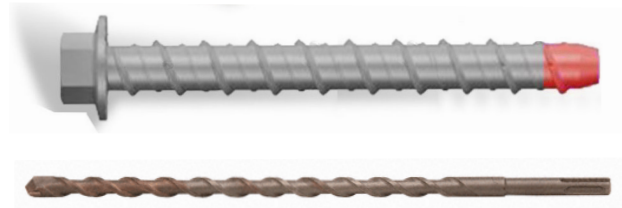
TILT-LOCK CHANNEL ACCESSORIES FOR 12MM TO 17.52MM SYSTEM

M12 HEX HEAD THREADED ROD & LAG SCREW - 120 MM LONG



CAT. NO.	DESCRIPTION
TRHM12120	M12 Hex Head Threaded Rod 120 mm
LSM12120	M12 Lag Screw 120 mm Long
SSHM12	M12 Stainless Steel Hex Nut
SSFWM12	M12 Stainless Steel Washer

CRL GALVANISED CONCRETE ANCHOR M12 X 100MM



CAT. NO.	DESCRIPTION
CAGM12100	M12 x 100mm Concrete Anchor
SDSW12	12.7mm x 305mm Masonry Bit

TILT-LOCK 19 MM SPANNER



CAT. NO.	DESCRIPTION
TLCS	TILT-LOCK 19 mm Spanner

GLASS CLAMP FOR TILT-LOCK 12 - 17.52 MM CHANNEL



CAT. NO.	DESCRIPTION
TL1213GC	Glass Clamp 12-13.52 mm Glass
TL1415GC	Glass Clamp 14.28-15.52 mm Glass
TL1617GC	Glass Clamp 16.76-17.52 mm Glass

SIDE COVER PLATE 3600 MM TILT-LOCK 12 - 17.52 MM CHANNEL



CAT. NO.	FINISHES
TL1217SCPSBA	Silver Brushed Anodized
TL1217SCPBB	Black Brushed Anodized

TOP COVER PLATE 3600 MM TILT-LOCK 12 - 17.52 MM CHANNEL



CAT. NO.	FINISHES
TL1217TCPSBA	Silver Brushed Anodized
TL1217TCPBBA	Black Brushed Anodized

TILT-LOCK CHANNEL ACCESSORIES KITS 12MM TO 17.52MM SYSTEM

BOTTOM COVER PLATE 3600 MM TILT-LOCK 12 - 17.52 MM CHANNEL



CAT. NO.	FINISHES
TL1217BCPSBA	Silver Brushed Anodized
TL1217BCPBBA	Black Brushed Anodized

END CAPS FOR TILT-LOCK 12 - 17.52 MM CHANNEL



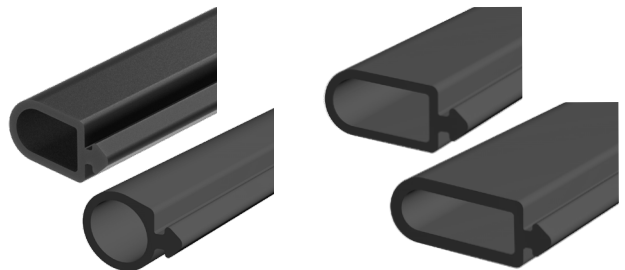
CAT. NO.	DESCRIPTION
TLT1217ECSBA	Top Channel End Cap SBA
TLT1217ECBBA	Top Channel End Cap BBA
TLR1217ECSBA	Recess Channel End Cap SBA
TLR1217ECBBA	Recess Channel End Cap BBA
TLS1217ECSBA	Side Channel End Cap SBA
TLS1217ECBBA	Side Channel End Cap BBA

BETWEEN GLASS RUBBER FOR 12 - 17.52 MM - 200 MM LONG



CAT. NO.	UNIT QUANTITY
TL1217BGR	1

GASKETS FOR TILT-LOCK 12 - 17.52 MM CHANNEL - 3.6M ROLLS



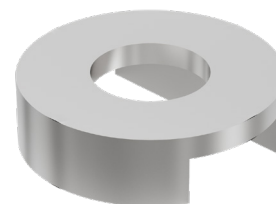
CAT. NO.	DESCRIPTION
TL1215G1	12 - 15.52 mm Inside Gasket
TL17G1	17.52 mm Inside Gasket
TL1213G0	12 - 13.52 mm Outside Gasket
TL1517G0	14.28 - 17.52 mm Outside Gasket

CHANNEL JOINING PIN FOR TILT-LOCK CHANNEL



CAT. NO.	UNIT QUANTITY
TLCJP	1

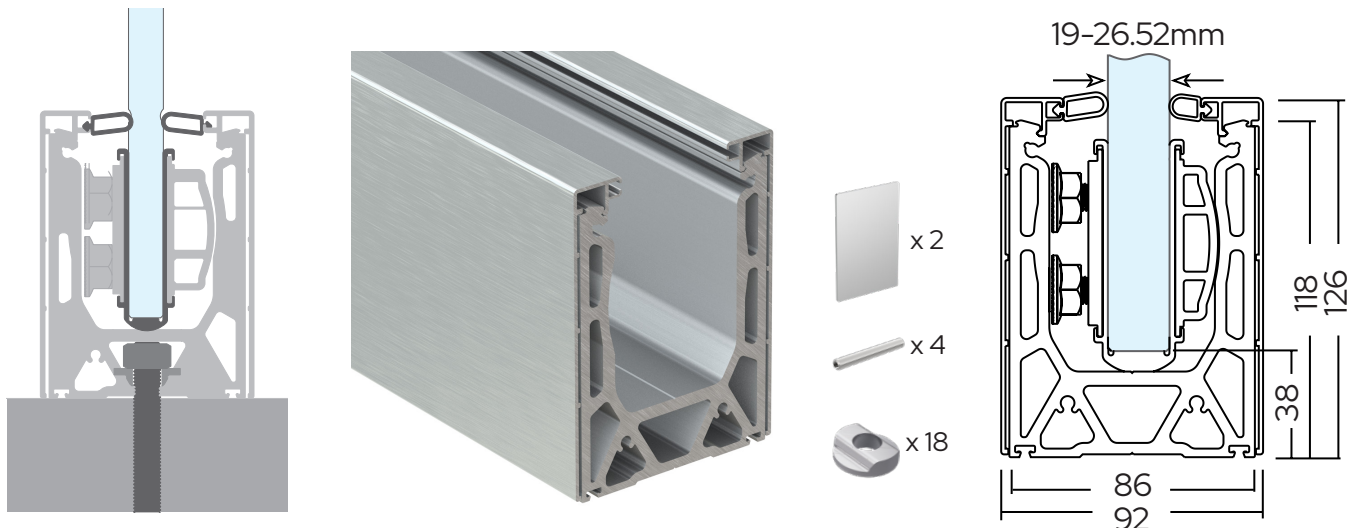
STABILIZING WASHER FOR 12 - 17.52 MM CHANNEL



CAT. NO.	UNIT QUANTITY
TL1217SW	Stabilizing Washer For 12-17.52 mm

TILT-LOCK CHANNEL KITS FOR 19MM TO 26.52MM GLASS

TILT-LOCK TOP FIX 3600 MM CHANNEL KIT 19 - 26.52 MM GLASS



CAT. NO.

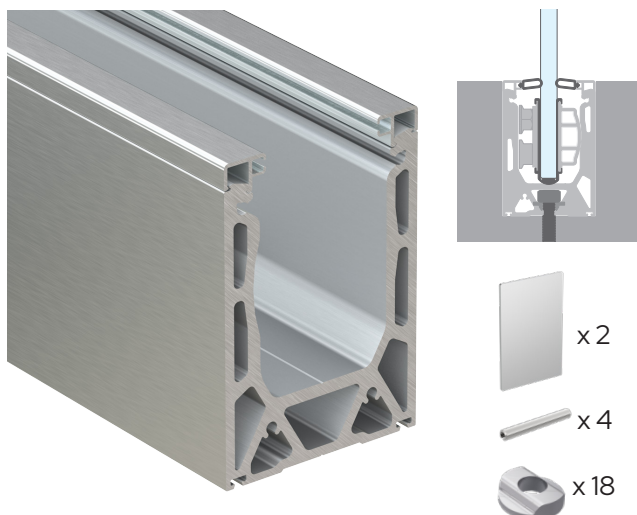
FINISHES

TLTC1926SBA
TLTC1926BBA

Silver Brushed Anodized
Black Brushed Anodized

* 18 Fixing Holes Per 3.6 m Length

TILT-LOCK RECESS FIX 3600 MM CHANNEL KIT 19 - 26.52 MM GLASS



CAT. NO.

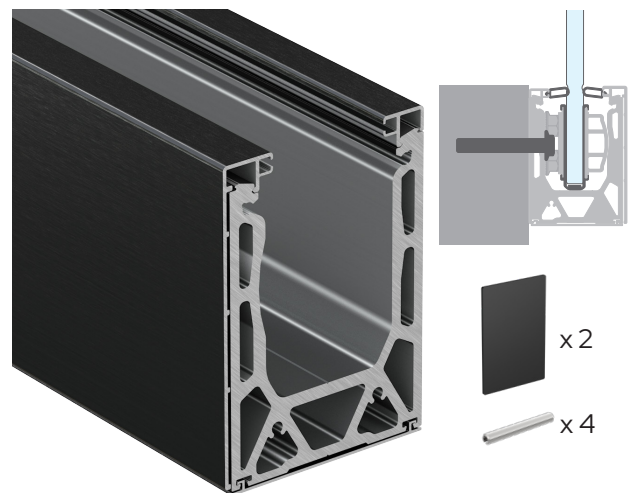
FINISHES

TLRC1926SBA
TLRC1926BBA

Silver Brushed Anodized
Black Brushed Anodized

* 18 Fixing Holes Per 3.6 m Length

TILT-LOCK SIDE FIX 3600 MM CHANNEL KIT 19 - 26.52 MM GLASS



CAT. NO.

FINISHES

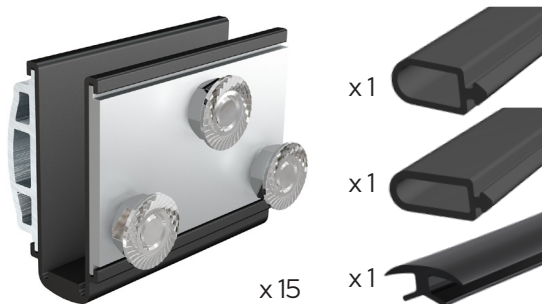
TLSC1926SBA
TLSC1926BBA

Silver Brushed Anodized
Black Brushed Anodized

* 18 Fixing Holes Per 3.6 m Length

TILT-LOCK CLAMP KITS FOR 19MM TO 26.52MM GLASS

TILT-LOCK GLASS CLAMP KIT FOR 19 MM - 21.52 MM GLASS

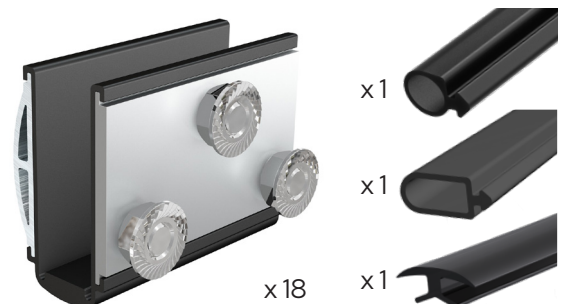


CAT. NO.

TLCK1921

15 x 19-21.52 mm Glass Clamps
1 x Inside Rubber 3600 mm
1 x Outside Rubber 3600 mm
1 x Between Glass Rubber 200 mm

TILT-LOCK GLASS CLAMP KIT FOR 24.76 MM - 26.52 MM GLASS



CAT. NO.

TLCK2426

18 x 24.76-26.52 mm Glass Clamps
1 x Inside Rubber 3600 mm
1 x Outside Rubber 3600 mm
1 x Between Glass Rubber 200 mm



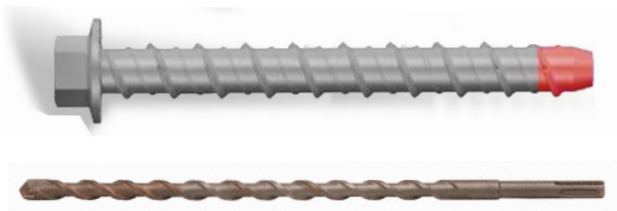
TILT-LOCK CHANNEL ACCESSORIES FOR 19MM TO 26.52MM SYSTEM

M12 HEX HEAD THREADED ROD & LAG SCREW - 120 MM LONG



CAT. NO.	DESCRIPTION
TRHM12120	M12 Hex Head Threaded Rod 120 mm
LSM12120	M12 Lag Screw 120 mm Long
SSHNM12	M12 Stainless Steel Hex Nut
SSFWM12	M12 Stainless Steel Washer

CRL GALVANISED CONCRETE ANCHOR M12 X 100MM



CAT. NO.	DESCRIPTION
CAGM12100	M12 x 100mm Concrete Anchor
SDSW12	12.7mm x 305mm Masonry Bit

GLASS CLAMP FOR TILT-LOCK 19 - 26.52 MM CHANNEL



CAT. NO.	DESCRIPTION
TL1921GC	Glass Clamp 19-21.52mm Glass
TL2426GC	Glass Clamp 24.76-26.52mm Glass

TILT-LOCK 19 MM SPANNER



CAT. NO.	DESCRIPTION
TLCS	TILT-LOCK 19 mm Spanner

SIDE COVER PLATE 3600 MM TILT-LOCK 19 - 26.52 MM CHANNEL



CAT. NO.	FINISHES
TL1926SCPSBA	Silver Brushed Anodized
TL1926SCPBBA	Black Brushed Anodized

TOP COVER PLATE 3600 MM TILT-LOCK 19 - 26.52 MM CHANNEL



CAT. NO.	FINISHES
TL1926TCPSBA	Silver Brushed Anodized
TL1926TCPBBA	Black Brushed Anodized

TILT-LOCK CHANNEL ACCESSORIES KITS 19MM TO 26.52MM SYSTEM

BOTTOM COVER PLATE 3600 MM TILT-LOCK 19 - 26.52 MM CHANNEL



CAT. NO.	FINISHES
TL1926BCPSBA	Silver Brushed Anodized
TL1926BCPBBA	Black Brushed Anodized

END CAPS FOR TILT-LOCK 19 - 26.52 MM CHANNEL



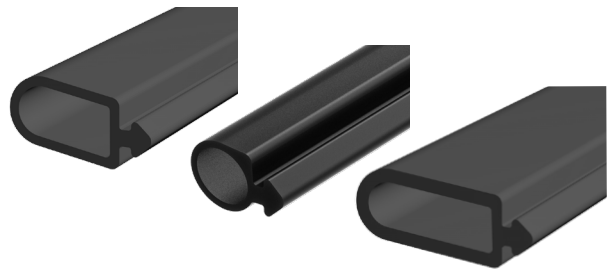
CAT. NO.	FINISHES
TLT1926ECSBA	Top Channel End Cap SBA
TLT1926ECBBA	Top Channel End Cap BBA
TLR1926ECSBA	Recess Channel End Cap SBA
TLR1926ECBBA	Recess Channel End Cap BBA
TLS1926ECSBA	Side Channel End Cap SBA
TLS1926ECBBA	Side Channel End Cap BBA

BETWEEN GLASS RUBBER FOR 19 - 26.52 MM - 200 MM LONG



CAT. NO.	UNIT QUANTITY
TL1926BGR	1

GASKETS FOR TILT-LOCK 19 - 26.52 MM CHANNEL - 3600 MM



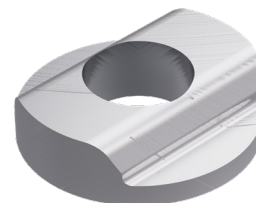
CAT. NO.	DESCRIPTION
TL1921G1	19 - 21.52 mm Inside Gasket
TL2426G1	24.76 - 26.52 mm Inside Gasket
TL1926G0	19 - 26.52 mm Outside Gasket

CHANNEL JOINING PIN FOR TILT-LOCK CHANNEL



CAT. NO.	UNIT QUANTITY
TLCJP	1

STABILIZING WASHER FOR 19 - 26.52 MM CHANNEL



CAT. NO.	DESCRIPTION
TL1926SW	Stabilizing Washer For 19-26.52 mm



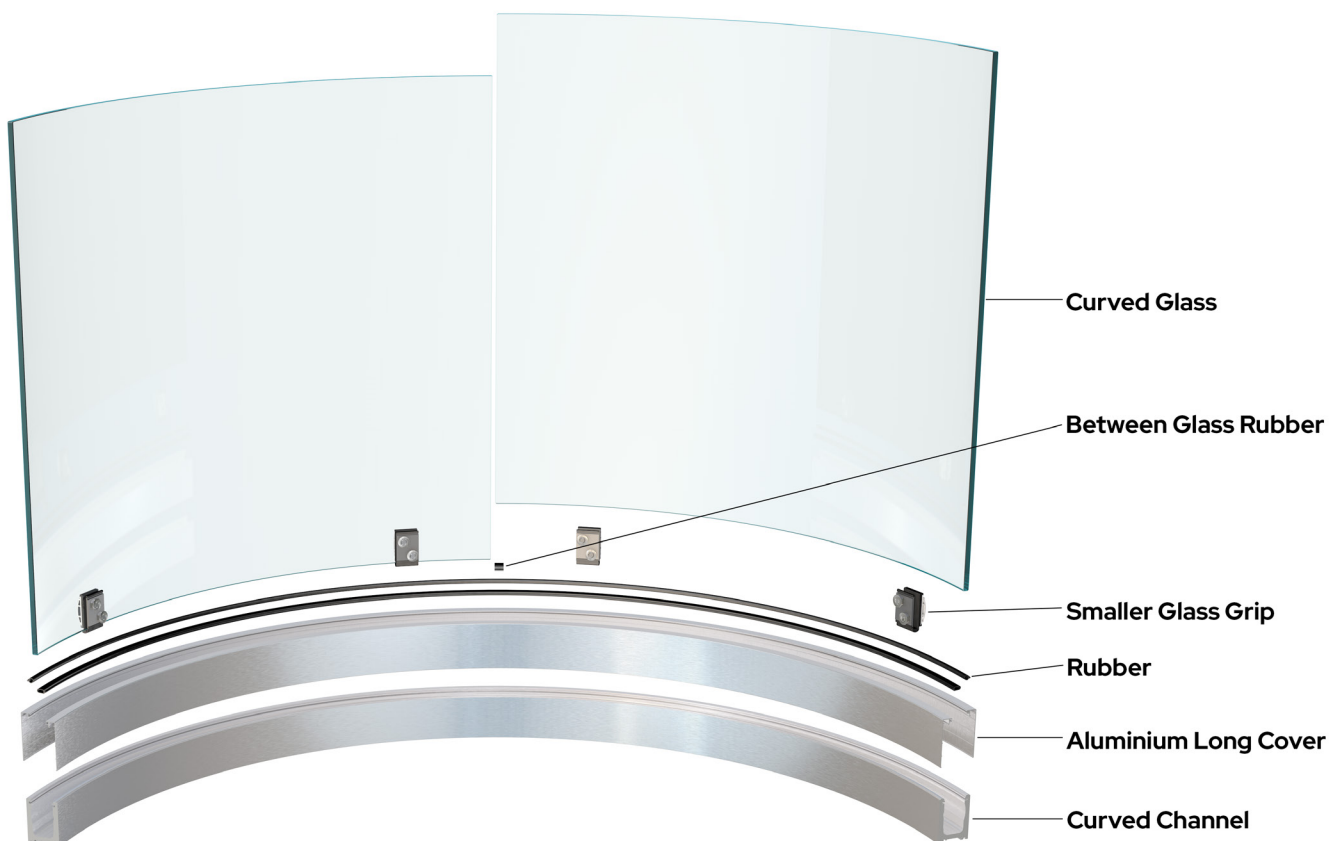
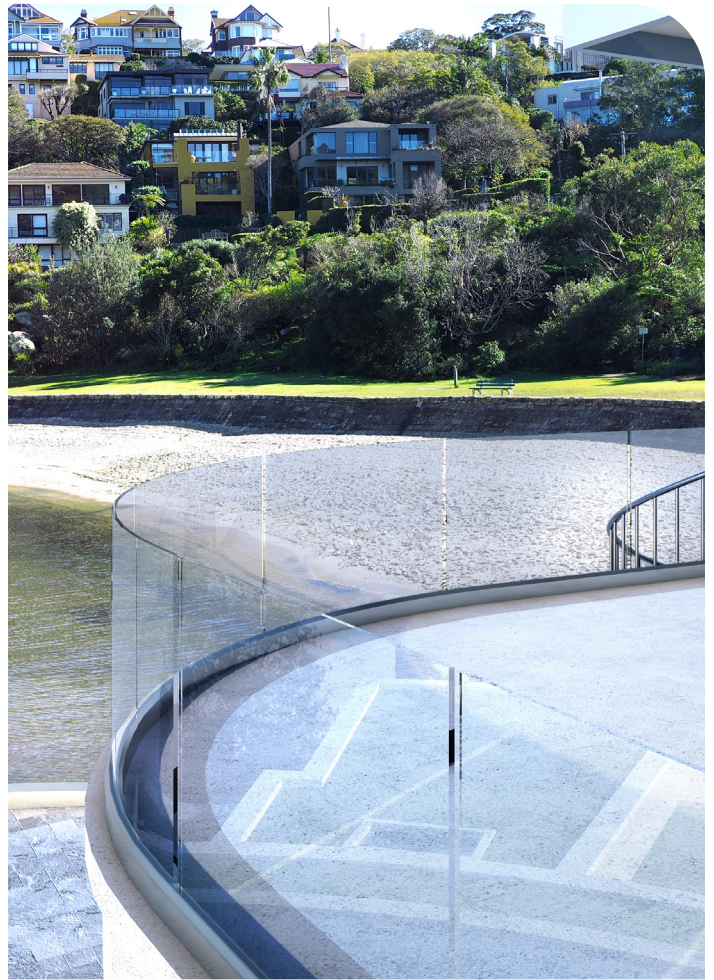
TILT-LOCK CURVED CHANNEL SYSTEM

- Curved Channel with Smaller Glass Grips
- Minimum Curvature Radius 950 mm
- Custom Sizes of Curved Channel are Made to Order for All Projects and Applications
- Available in Mill or Black Powdercoat Finishes
- Available in Top, Side and Recessed Fixed Applications
- Faster & Easier Installation
- Comprehensively Tested & Engineered





• 50mm Width for Curved Channel

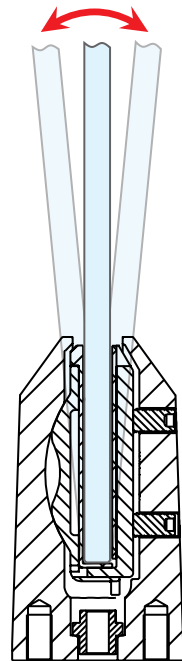


TILT-LOCK

TILT-LOCK ADJUSTABLE SPIGOTS

- High strength Duplex 2205 Ultra Marine Stainless Steel for more than Double the Yield Strength and Superior Corrosion Resistance than 316L
- Suitable for 12 mm to 17.52 mm Glass
- Suitable for use with SGP
- Available in Brushed Stainless, Polished Stainless and Matt Black
- Faster & Easier Installation
- No Holes in Glass Required
- 30 mm Tilt Adjustment Back and Forward
- Tilt Adjustment from One Side
- Comprehensively Tested & Engineered
- Concealed Centre Fix and Base Plate Models

Up To 30mm Tilt
Adjustment
Back & Forward



PATENTED GLASS SYSTEMS

- Australian Patent No. 2014328827
- New Zealand Patent No. 700501
- US Patent No. 10,030,393
- Chinese Patent No. 201480064808.4
- European Patent No. 3049590
- Canadian Patent No. 2,962,407



Available in Three Popular Finishes

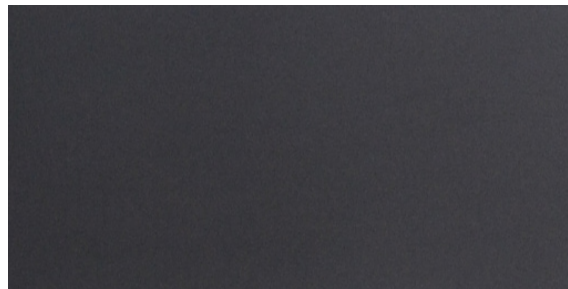
Brushed Stainless



Polished Stainless



Matt Black

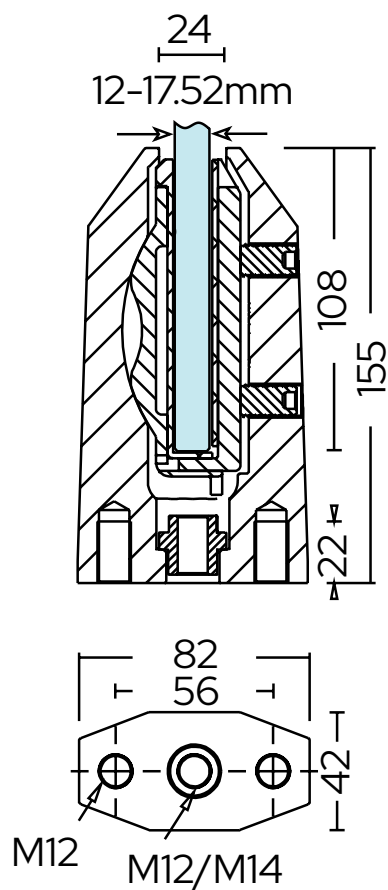


TILT-LOCK CENTRE CONCEALED SPIGOT FOR 12 - 17.52MM GLASS

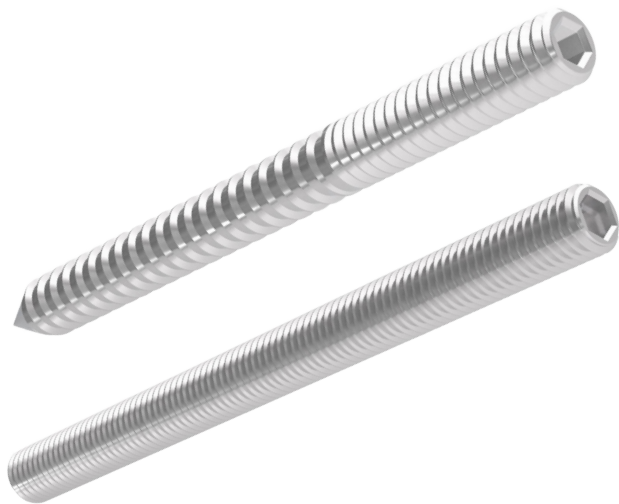
CRL CENTRE CONCEALED
MOUNT TILT-LOCK SPIGOT
FOR 12 - 17.52 MM GLASS



CAT. NO.	FINISHES
STLCC1217PS	Polished Stainless
STLCC1217BS	Brushed Stainless
STLCC1217MBL	Matt Black



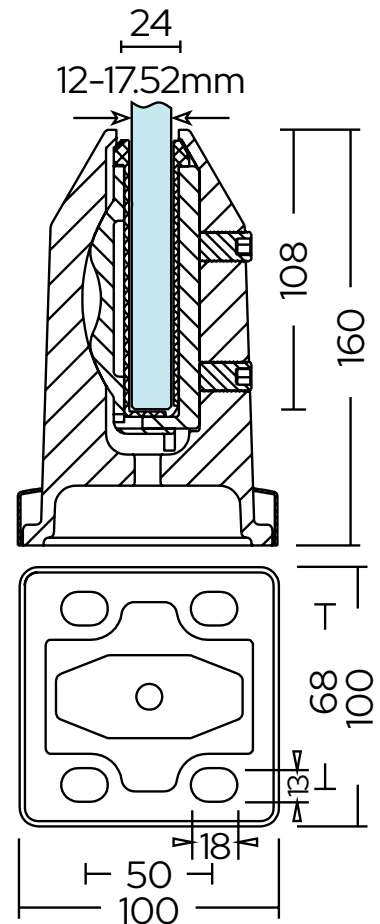
FIXINGS FOR CENTRE CONCEALED
MOUNT TILT-LOCK SPIGOT



CAT. NO.	DESCRIPTION
LSM12120	M12 Lag Screw 120 mm Long
TRHM12120	M12 Hex Head Threaded Rod 120 mm

TILT-LOCK BASE PLATE SPIGOT FOR 12 - 17.52MM GLASS

CRL BASE PLATE MOUNT TILT-LOCK SPIGOT FOR 12 - 17.52 MM GLASS



CAT. NO.	FINISHES
STLB1217PS	Polished Stainless
STLB1217BS	Brushed Stainless
STLB1217MBL	Matt Black

M8 FIXING SET OF 4 FOR BASE PLATE MOUNT TILT-LOCK SPIGOT



CAT. NO.	DESCRIPTION
TRHM8SET	Pack of Four M8 Hex Head Threaded Rod 120 mm, Flat Washer and Nut

CHEMICAL ANCHOR 280 ML GREY

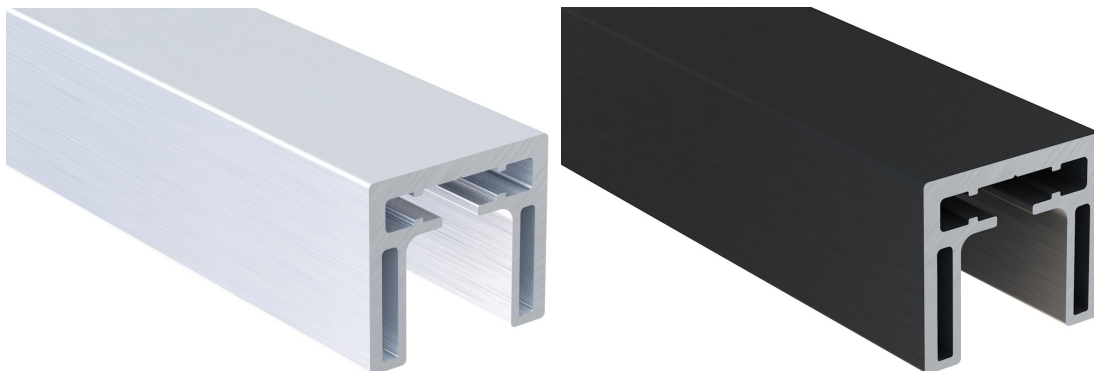


CAT. NO.	UNIT QUANTITY
SCA1400	280ML CARTRIDGE

CRL ALUMINIUM 40 MM X 36 MM CAP RAIL

CRL Aluminium 40 x 36 mm Square Cap Rail creates a stylish glass railing system capable of accommodating 10 mm to 21.52 mm glass. It features a low profile, sturdy design with an unobtrusive look. Stock lengths are 5.8 m long and available in Silver Brushed Anodized or Black Brushed Anodized finish. Corners, end caps and connectors are easily installed with grub screws which can be tightened from underneath and or with the use of the TUBELOC 2680 Retaining Compound Glue. This feature combined with the ease of cutting aluminium makes the joins almost invisible after installation.

ALUMINIUM 40 MM X 36 MM CAP RAIL - 5800 MM LENGTHS



CAT. NO.	FINISHES
ACR40SBA	Silver Brushed Anodized
ACR40BBA	Black Brushed Anodized

ALUMINIUM 40 MM X 36 MM CAP RAIL END CAP



CAT. NO.	FINISHES
ACR40ECSBA	Silver Brushed Anodized
ACR40ECBBA	Black Brushed Anodized

ALUMINIUM 40 MM X 36 MM CAP RAIL WALL MOUNT END CAP



CAT. NO.	FINISHES
ACR40WCSBA	Silver Brushed Anodized
ACR40WCBBA	Black Brushed Anodized

ALUMINIUM 40 MM X 36 MM 90° HORIZONTAL JOINER



CAT. NO.	UNIT QUANTITY
ACR40HJ	1

ALUMINIUM 40 MM X 36 MM 180° INLINE JOINER



CAT. NO.	UNIT QUANTITY
ACR40CJ	1

CRL ALUMINIUM 40 MM X 36 MM CAP RAIL

ALUMINIUM 40 MM X 36 MM ADJUSTABLE HORIZONTAL JOINER



CAT. NO.	UNIT QUANTITY
ACR40HAJ	1

ALUMINIUM 40 MM X 36 MM ADJUSTABLE VERTICAL JOINER



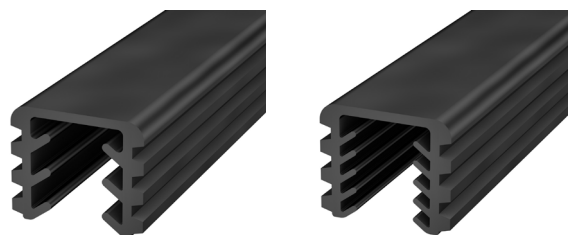
CAT. NO.	UNIT QUANTITY
ACR40VAJ	1

TUBELOC 2680 RETAINING COMPOUND GLUE



CAT. NO.	UNIT QUANTITY
ACRGLUE	50 ML BOTTLE

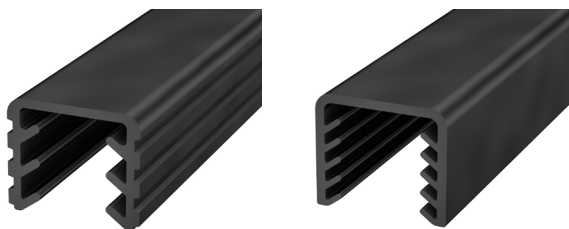
ALUMINIUM CAP RAIL VINYL INFILLS FOR 10 - 12.76 MM GLASS



CAT. NO.	DESCRIPTION
ACR40V1012	Vinyl for 10 - 12 mm Glass
ACR40V12127	Vinyl for 12 - 12.76 mm Glass

* SOLD BY THE LINEAL METER

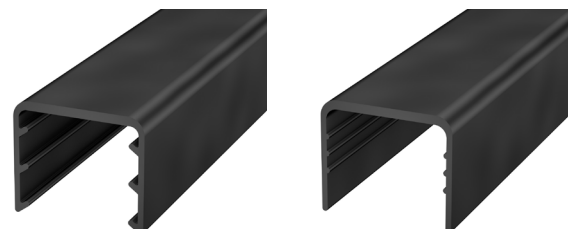
ALUMINIUM CAP RAIL VINYL INFILLS FOR 13.52 - 17.52 MM GLASS



CAT. NO.	DESCRIPTION
ACR40V1315	Vinyl for 13.52 - 15 mm Glass
ACR40V1517	Vinyl for 15 - 17.52 mm Glass

* SOLD BY THE LINEAL METER

ALUMINIUM CAP RAIL VINYL INFILLS FOR 19 - 21.52 MM GLASS



CAT. NO.	DESCRIPTION
ACR40V19	Vinyl for 19 mm Glass
ACR40V2021	Vinyl for 20 - 21.52 mm Glass

* SOLD BY THE LINEAL METER

CRL TOOL & CONSUMABLES

CRL SURE-GRIP 8" VACUUM LIFTER 68 KG CAPACITY



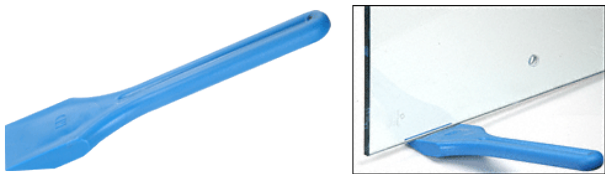
CAT. NO.	DESCRIPTION
S338	Sure-Grip Vacuum lifter 68 KG

GLASS ROLLING BLOCKS



CAT. NO.	DESCRIPTION
RB200	Pair of Glass Rolling Blocks

PLATE GLASS LIFTING TOOL



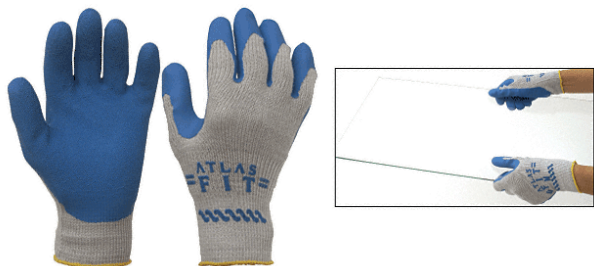
CAT. NO.	DESCRIPTION
PGL11	Plate Glass Lifting Tool

CRL SINGLE SIDED SLAB BUGGY 1000 KG LIMIT



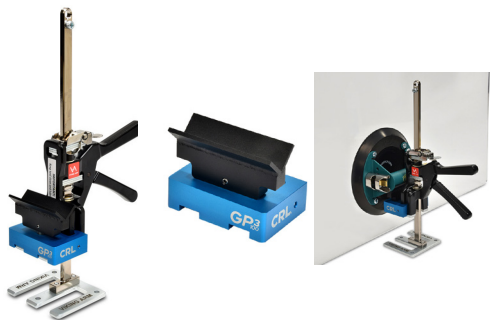
CAT. NO.	DESCRIPTION
7265SAU	CRL Single Sided Slab Buggy

ATLAS FIT GLOVES



CAT. NO.	SIZES
300AFS	Small
300AFM	Medium
300AFL	Large
300AFXL	Extra Large

CRL VIKING ARM GLASS LIFT KIT



CAT. NO.	DESCRIPTION
GP3VAK	CRL Viking Arm Kit
VA330	Viking Arm Handheld Tool
GP3100	CRL Glass Pane Place Attachment

CRL TOOL & CONSUMABLES

CRL GLASS CLEANER LOW AMMONIATED



CAT. NO.	DESCRIPTION
1973	Glass Cleaner Case of 12 Cans

CRL MICROFIBER WIPE 12 PACK



CAT. NO.	DESCRIPTION
MFW12	Microfiber Wipe 12 pack

CRL GENERAL PURPOSE NEUTRAL CURE SILICONE



CAT. NO.	DESCRIPTION
GPS10G	General Purpose Silicone Grey
GPS10W	General Purpose Silicone White
GPS10B	General Purpose Silicone Black
GPS10C	General Purpose Silicone Clear

CRL BIO-CLEAN WATER STAIN REMOVER



CAT. NO.	DESCRIPTION
WSR1	BioClean Water Stain Remover 473 ml

VITROGLAZE GLASS COATING



CAT. NO.	SIZES
VPG100	200 gm Aerosol Kit
VPG1L	Vitroglaze Protective Coating 1L
PRC1L	Vitroglaze Pre-Cleaner 1L

CRL KWIXSET EXPANDING CEMENT



CAT. NO.	DESCRIPTION
KWX50	Kwixset® Expanding Cement 22.7 kg
KWX25	Kwixset® Expanding Cement 11.3 kg



Call on 1800 424 275

Fax on 1800 813 013

Melbourne

42 Enterprise Drive

Rowville

VIC 3178

Tel. +61 3 9764 8322

Sydney

9 Shale Place

Eastern Creek

NSW 2766

Tel. +61 2 9851 3444

Enquiries

Email: crlaus@crlaurence.com

www.crlaurence.com.au

CRL[®]