

[illegible]

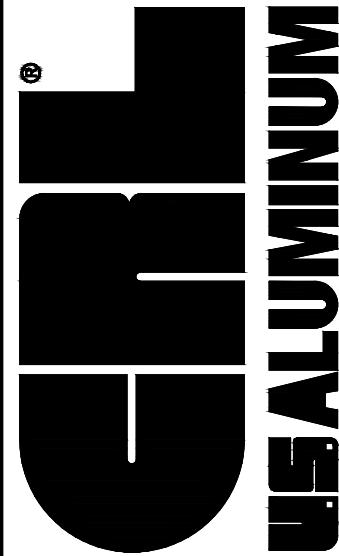
SERIES 2000 SERIES SLIDING DOORS

THE SERIES 2000 SLIDING DOOR IS A MULTI-TRACK ENTRANCE DESIGNED FOR INTERIOR APPLICATION ONLY. THIS MULTI-TRACK SLIDER IS ENGINEERED WITH STACKING CHANNELS AND BOTTOM TRACKS ALLOWING MULTI-SLIDER COMBINATIONS. RUGGED OVERALL CONSTRUCTION COUPLED WITH HEAVY WALL STILES AND INTERLOCKS CREATE A TRULY MONUMENTAL SLIDING UNIT. DOORS ARE EQUIPPED WITH FLUSH FINGER PULLS, HOOKLOCKS, AND LOCK CYLINDERS. ADJUSTABLE TANDEM ROLLERS AND FLOOR TRACK WITH STAINLESS STEEL CAPS ENSURE SMOOTH OPERATION AND DURABILITY. VARIOUS COMBINATIONS OF SLIDING AND POCKET DOOR PANELS CAN ACCOMMODATE MANY DESIGN PLANS. FLOOR TRACKS CAN BE INSTALLED, RECESSED OR SURFACE APPLIED. EACH SLIDING DOOR HAS TWO TANDEM STEEL ROLLERS TO PROVIDE SMOOTH OPERATION AND YEARS OF SERVICE.

STANDARD ABBREVIATIONS

RO	ROUGH OPENING
FD	FRAME DIMENSION
DLO	DAYLIGHT OPENING
DO	DOOR OPENING
DD	DOOR DIMENSION

Revisions By



C.R.LAURENCE CO. ARCHITECTURAL PRODUCTS
2503 E. Vernon Avenue, Los Angeles, C.A 90058-1897
PH (800) 421-6144 FX: 800-587-7501 www.crlaurence.com

description:

CRL US ALUMINUM
SLIDING DOORS
SERIES 2000

Discription:

Drawn By: AAD

Date: 10/12/16

Scale: AS NOTED

File Name:

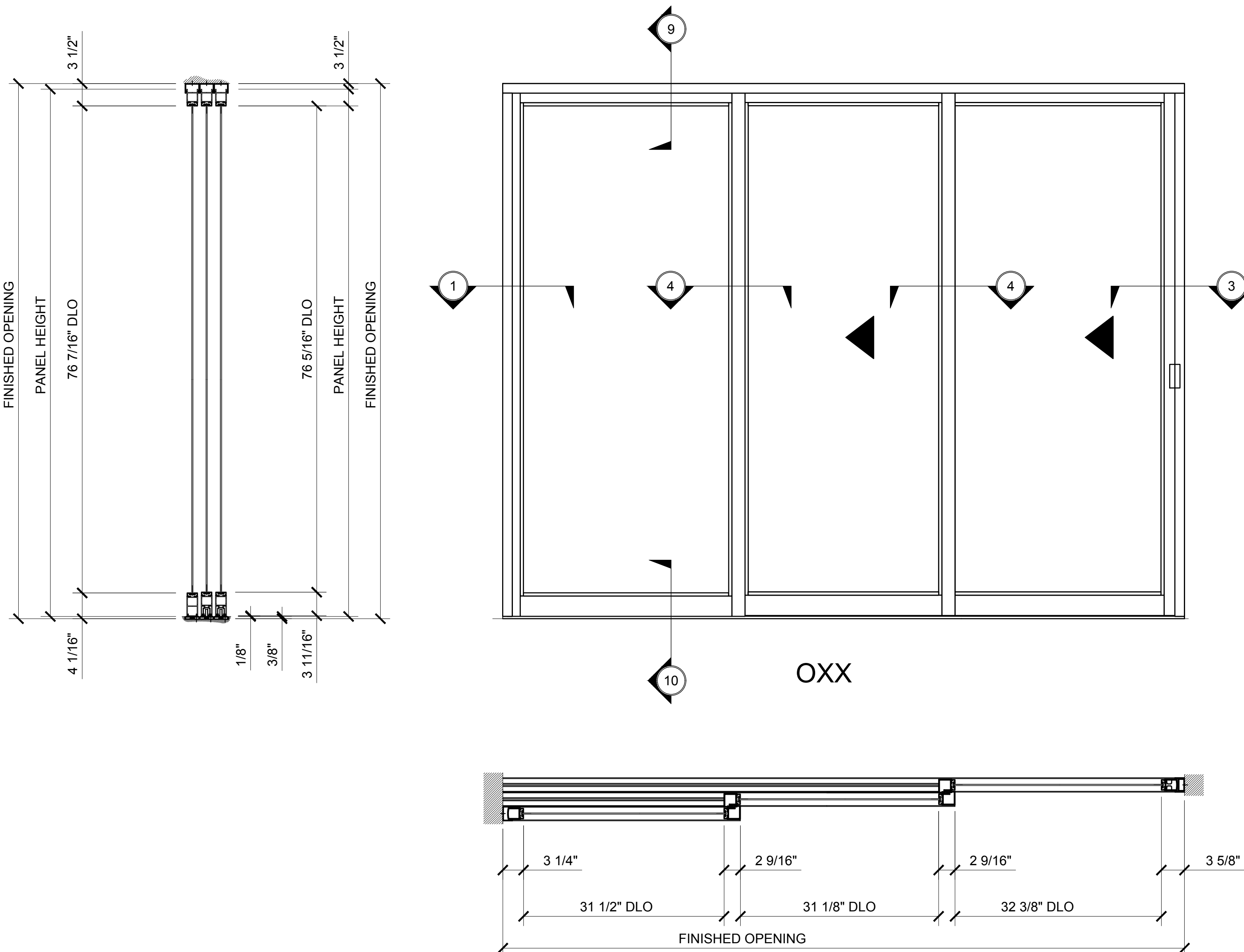
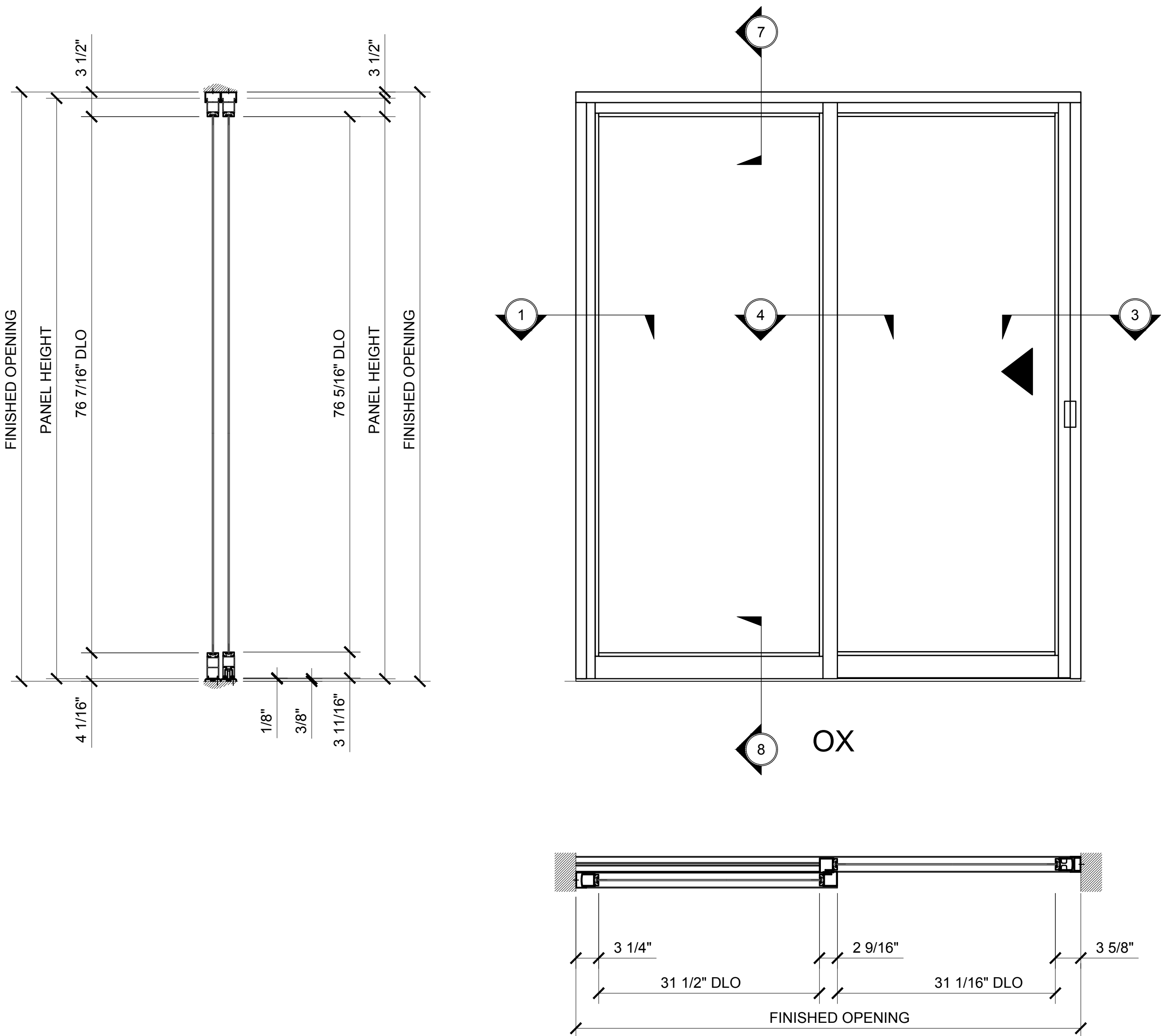
US SERIES 2000.dwg

Sheet

COVER

SERIES 2000 SLIDING DOORS - MULTI-SLIDERS - OX AND OXX

1" = 1'-0"



Revisions By:

CRL[®]
US ALUMINUM
C.R. LAURENCE CO. ARCHITECTURAL PRODUCTS
2503 E. Vernon Avenue, Los Angeles, CA 90058-1897
PH (800) 421-6144 FX 800-597-7301 www.crlaurence.com

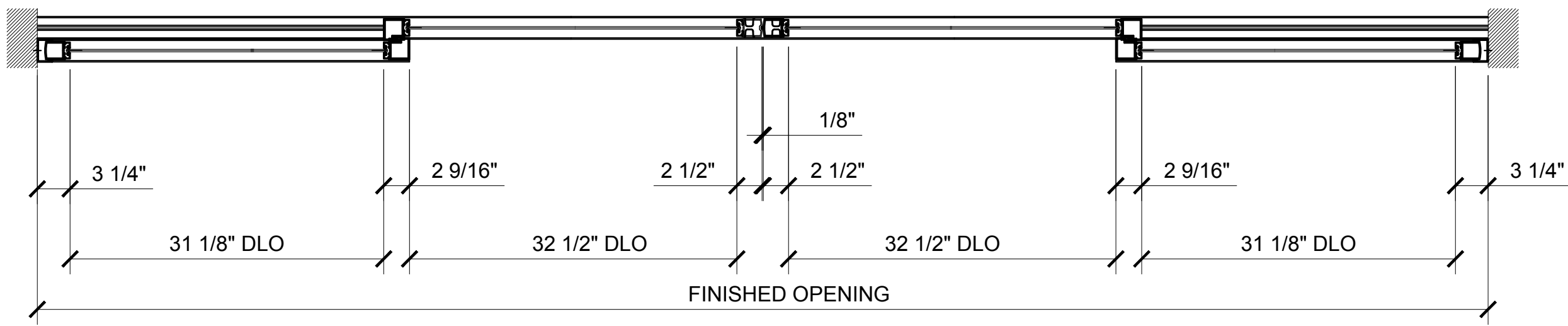
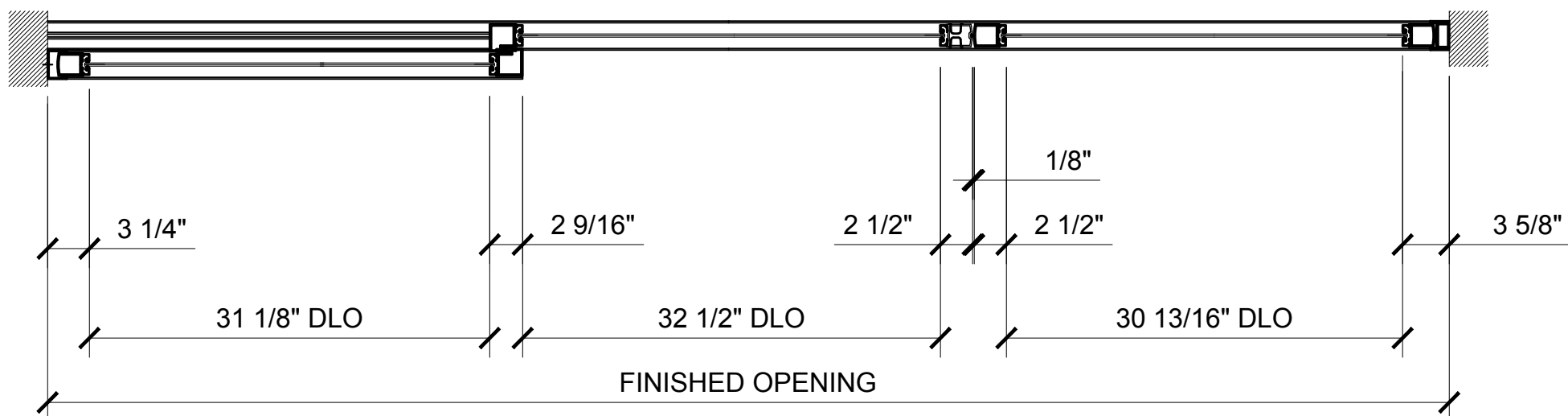
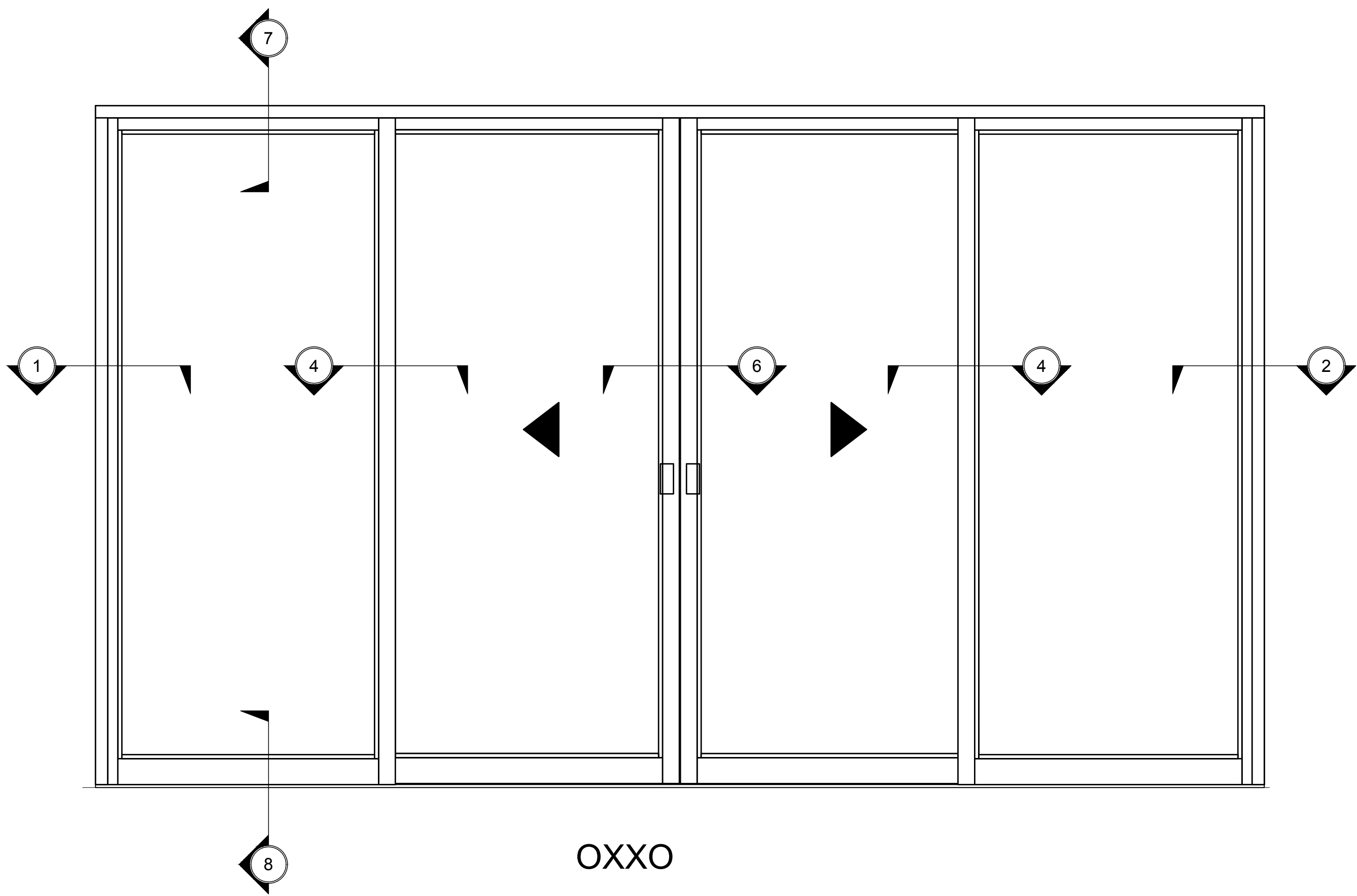
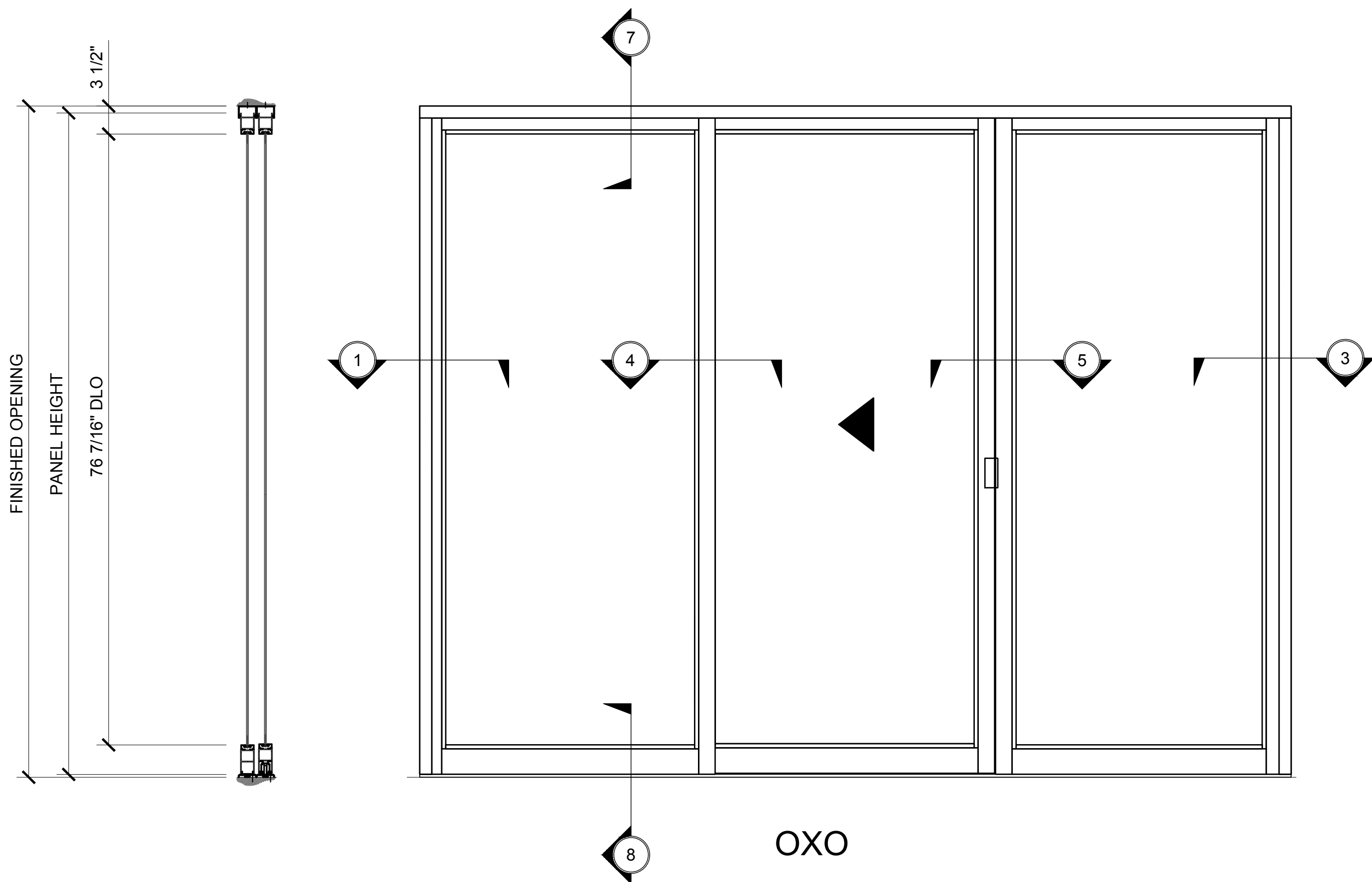
Discription:
CRL US ALUMINUM
SLIDING DOORS
SERIES 2000

Drawn By: AAD
Date: 10/12/16
Scale: AS NOTED
File Name:
US SERIES 2000.dwg

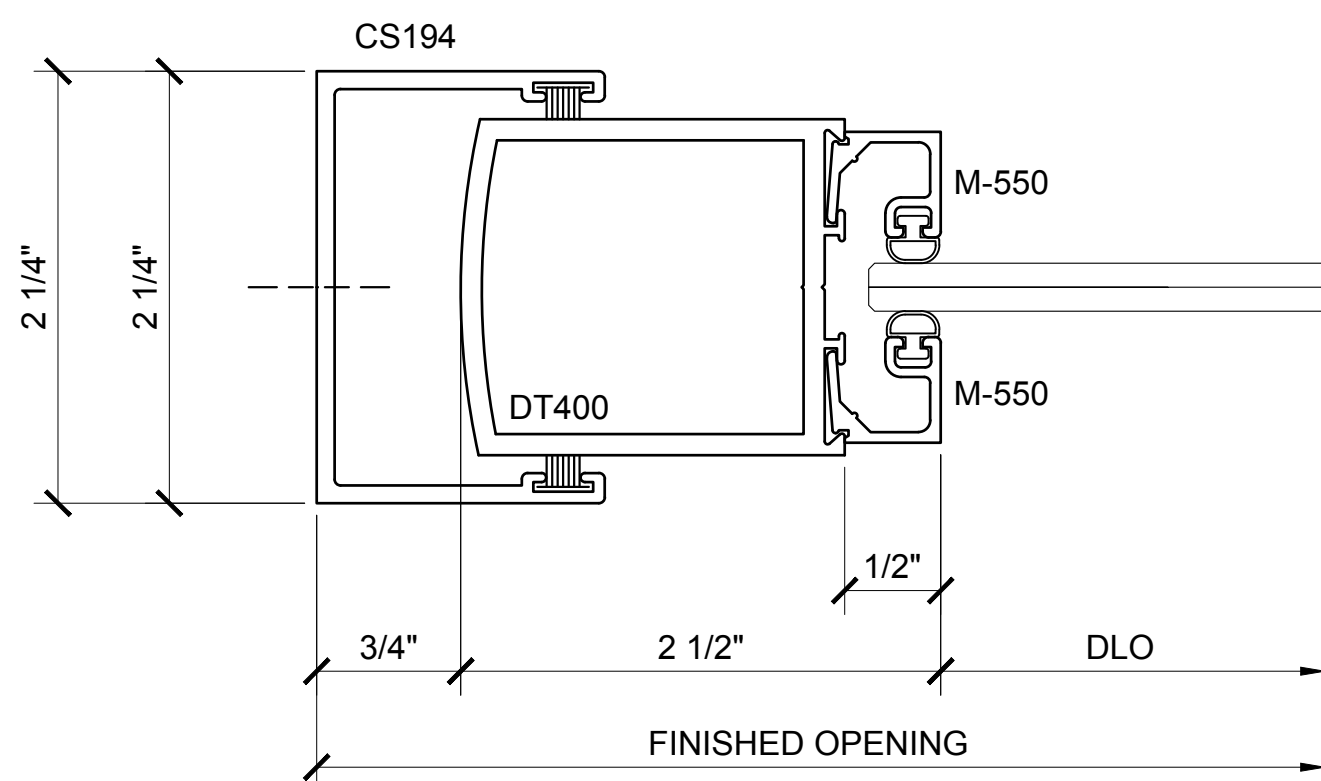
Sheet

SERIES 2000 SLIDING DOORS - MULTI-SLIDERS - OX O AND OXXO

1" = 1'-0"

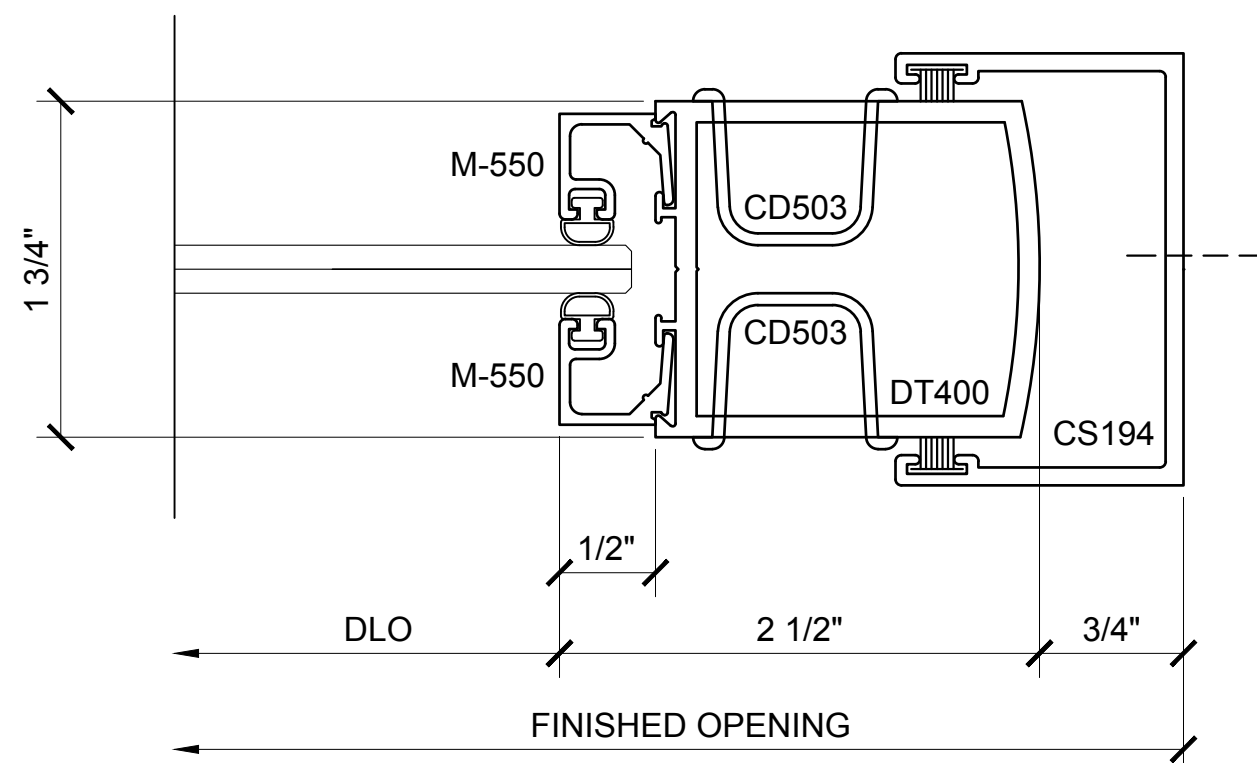


Revisions By:



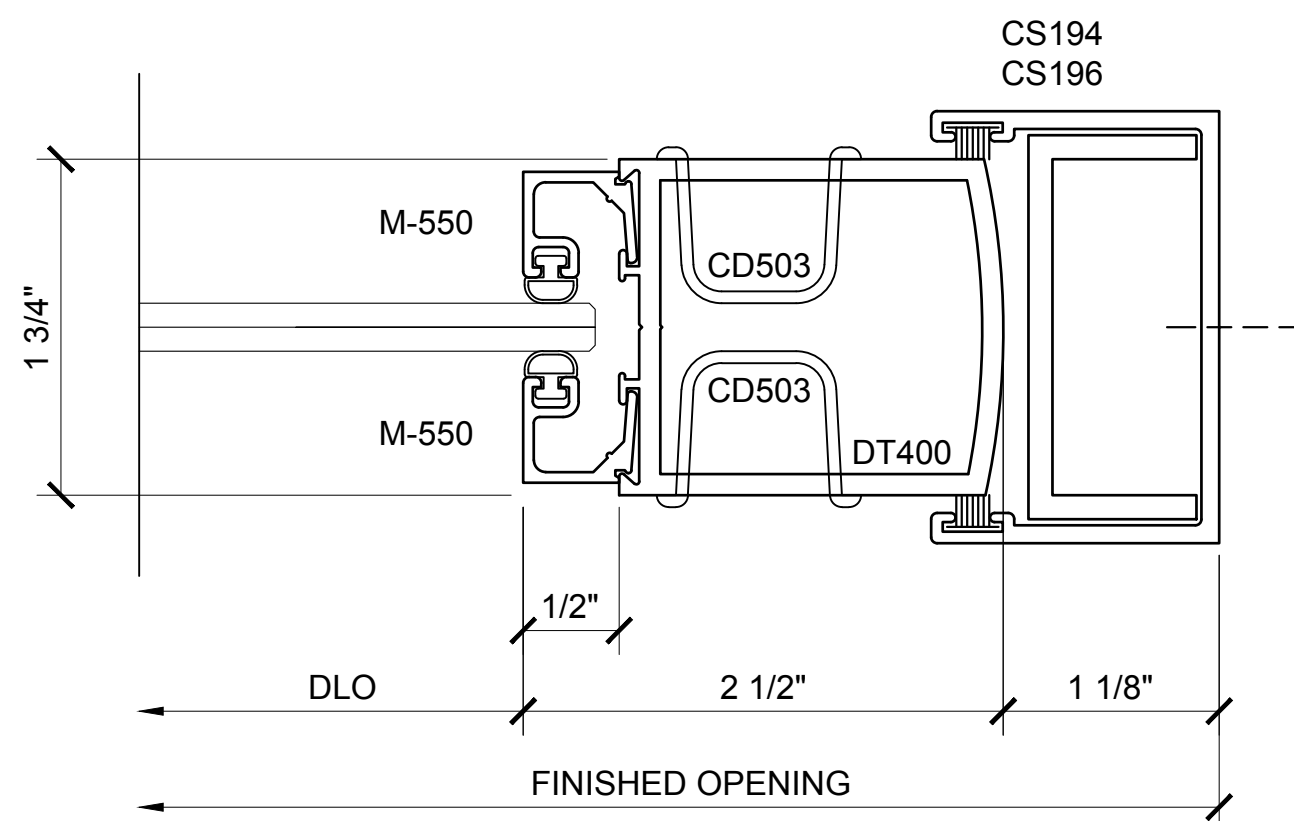
SECTION DETAIL AT DOOR
FIXED JAMB

1



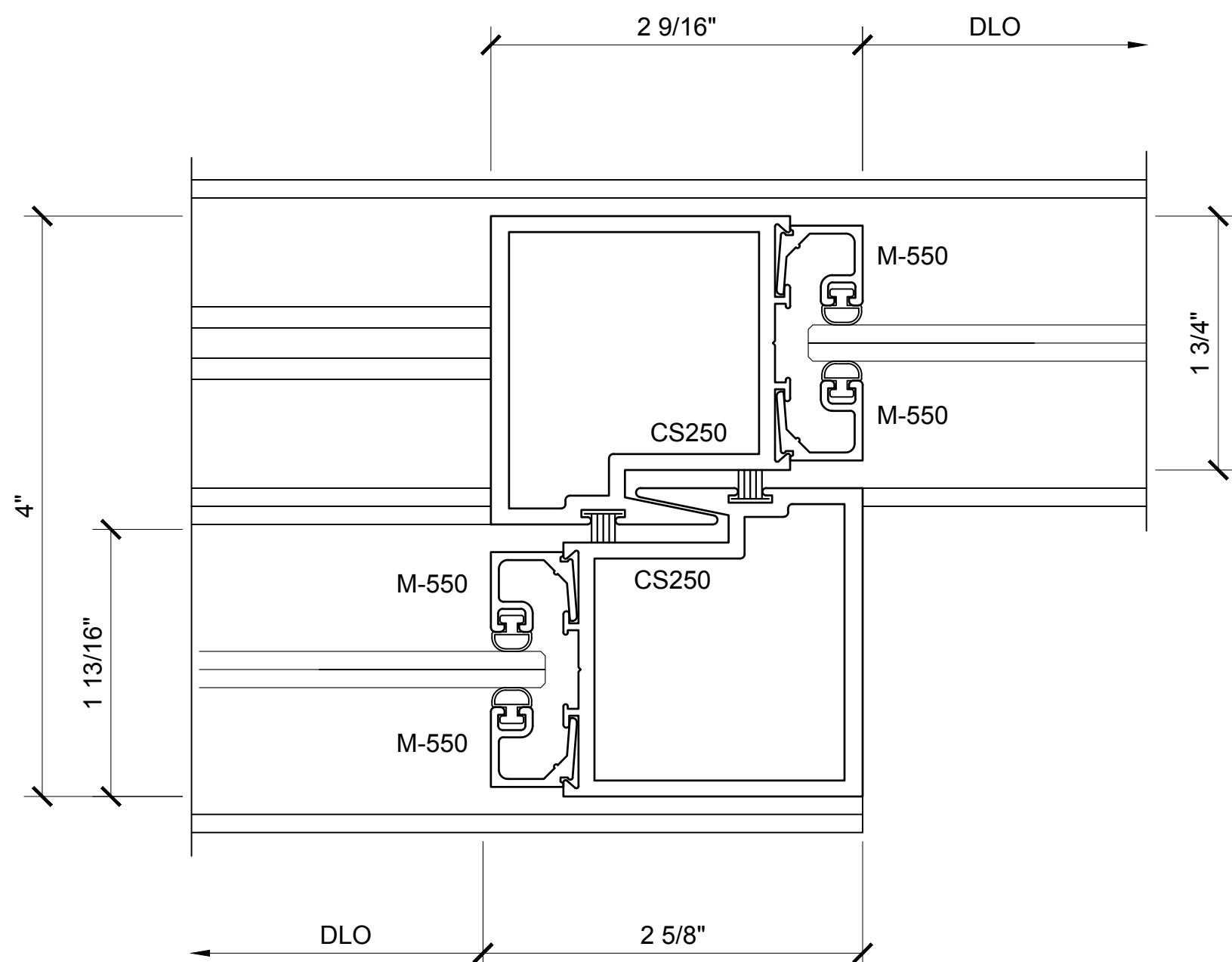
SECTION DETAIL AT DOOR
SLIDING JAMB

2



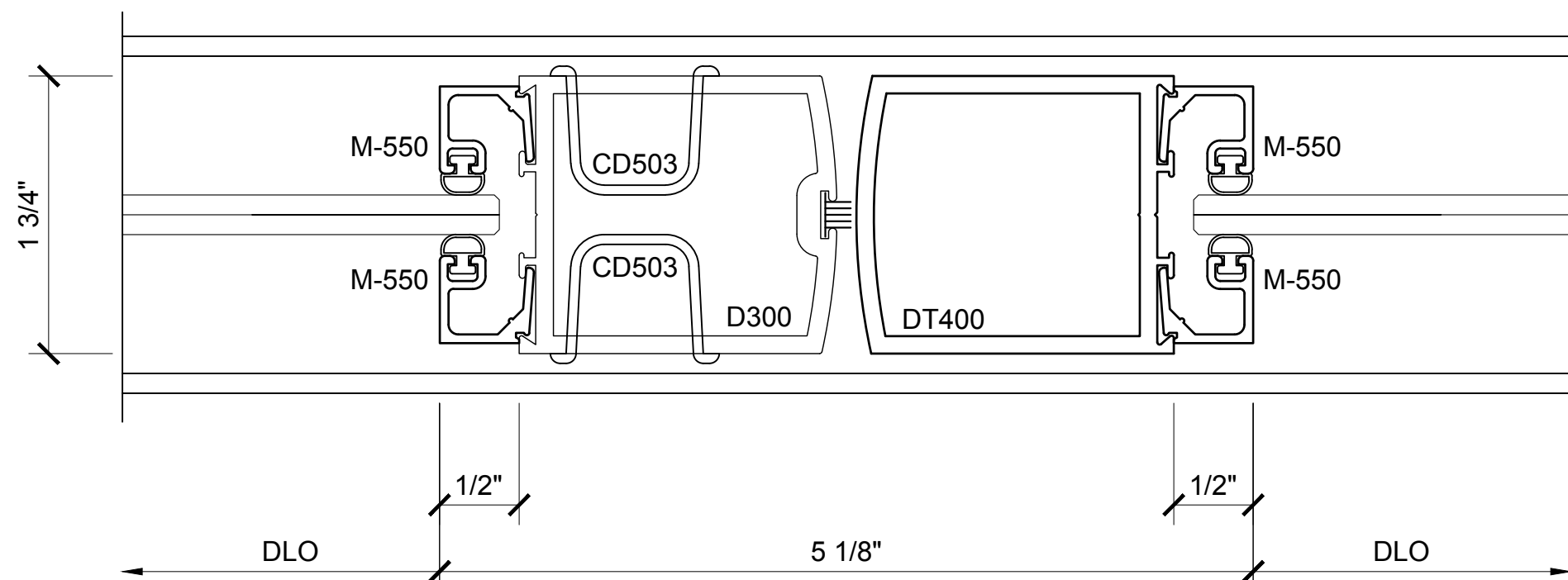
SECTION DETAIL AT DOOR
LOCKING JAMB

3



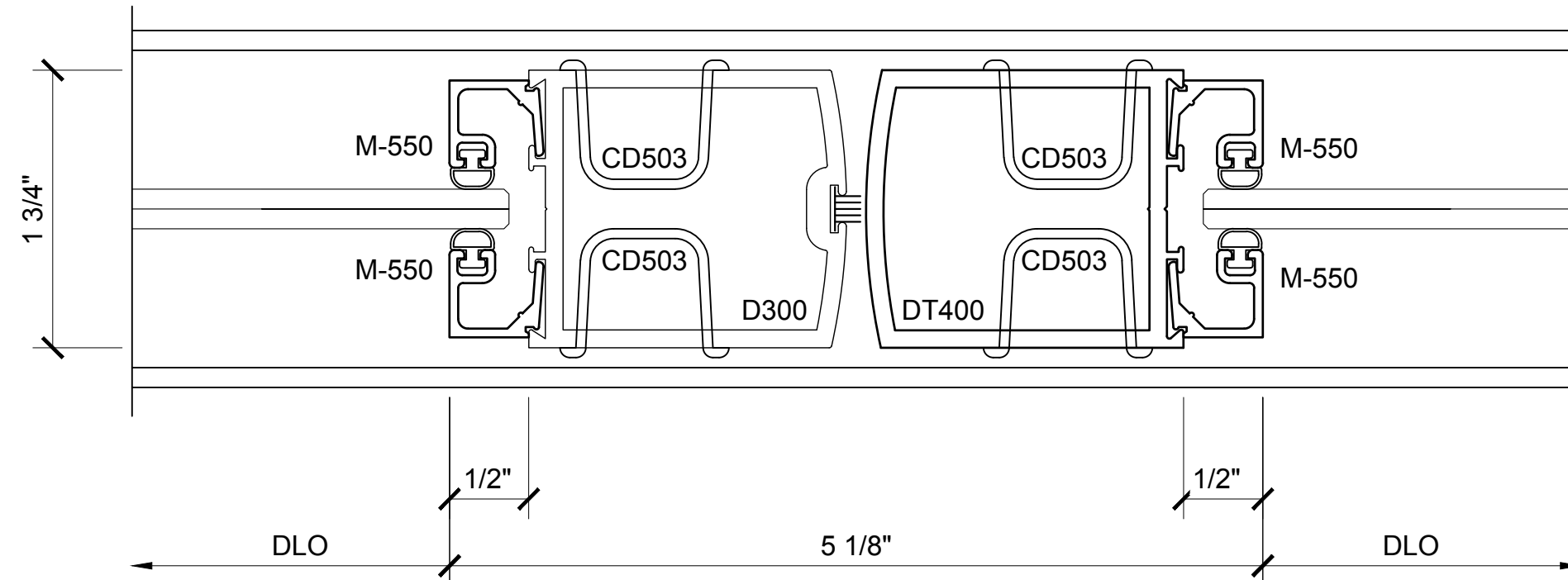
SECTION DETAIL AT
MEETING STILE

4



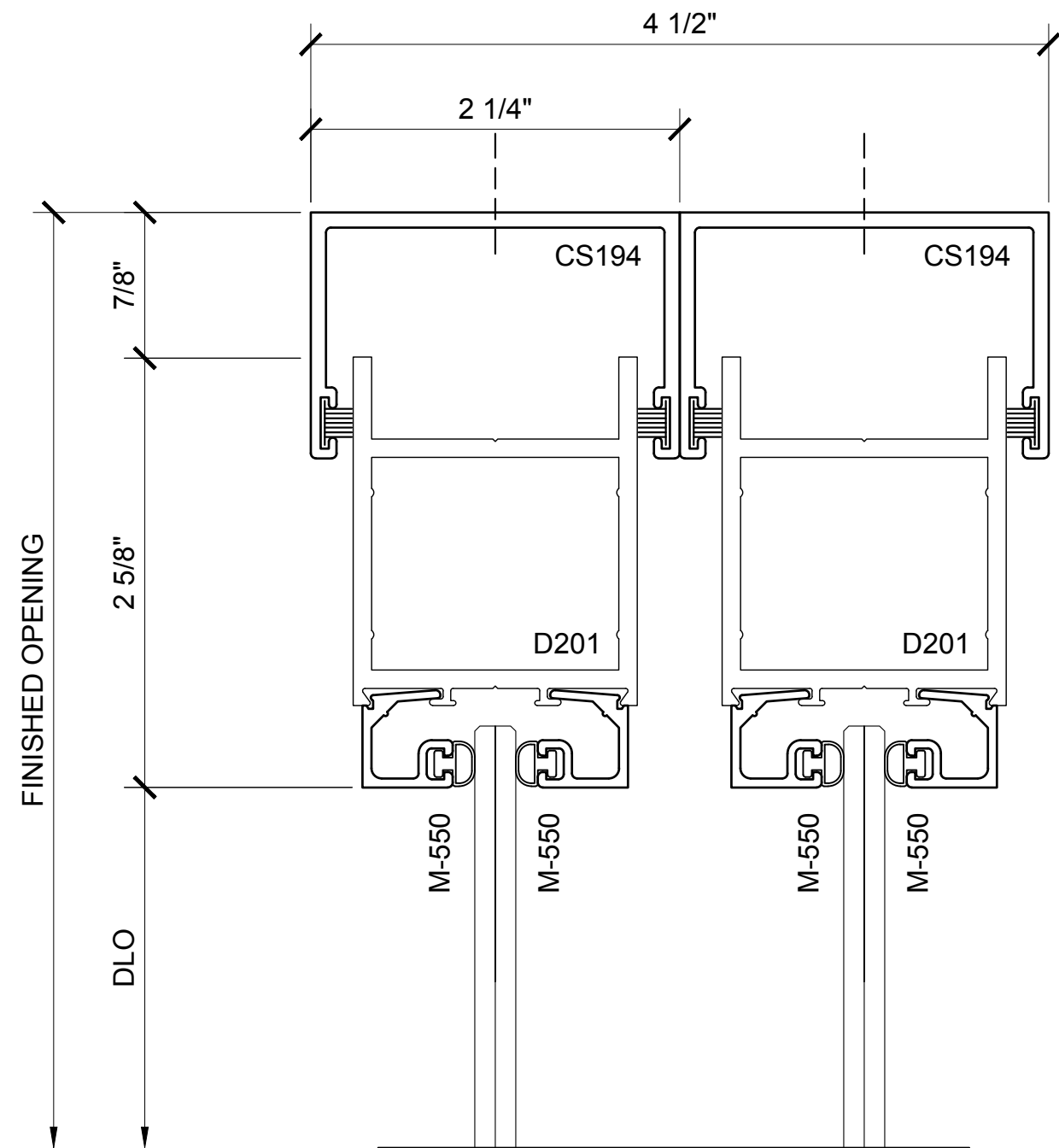
SECTION DETAIL AT DOOR
MEETING STILE -
SLIDING AND FIXED

5

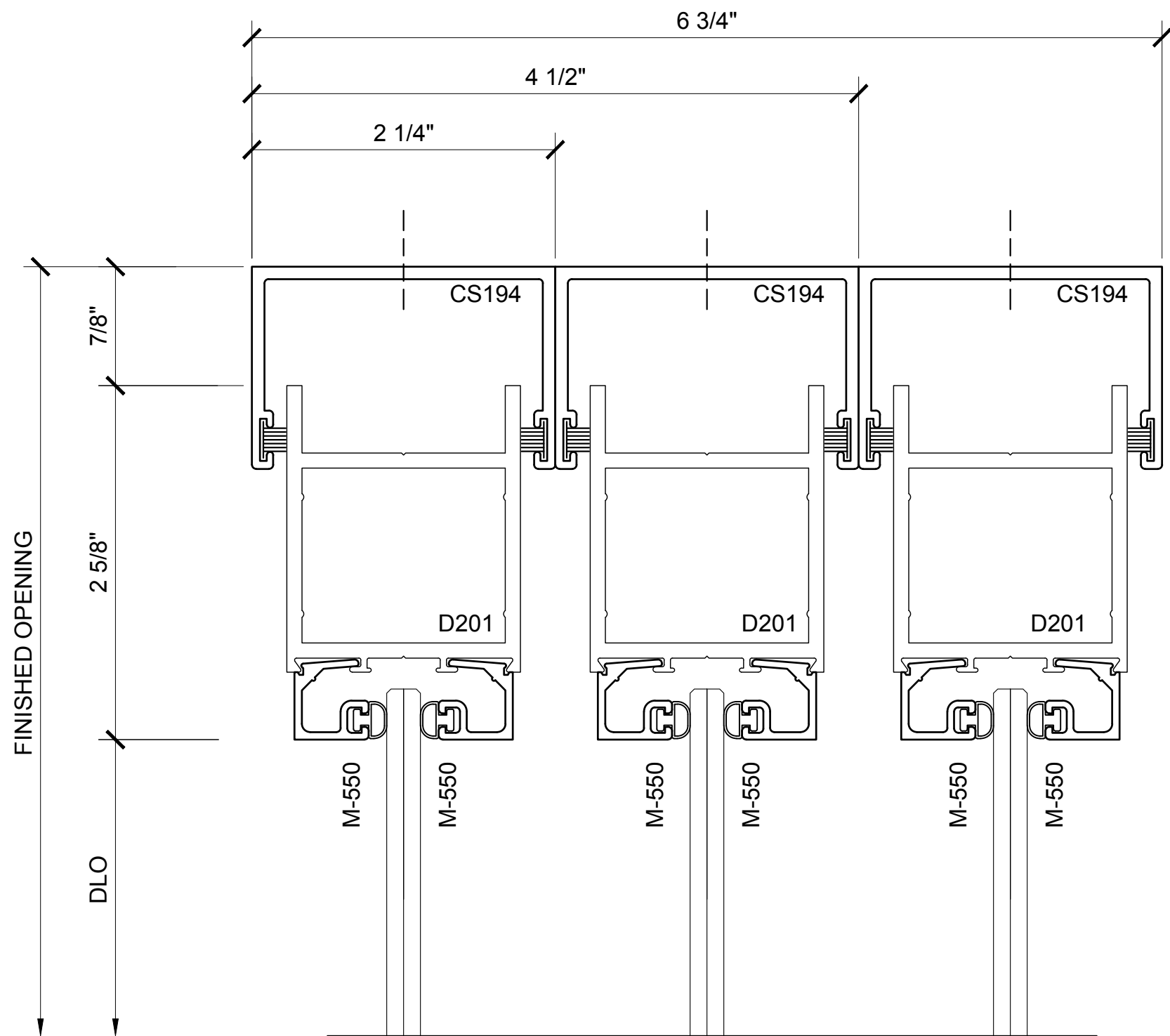


SECTION DETAIL AT DOOR
MEETING STILE -
SLIDING

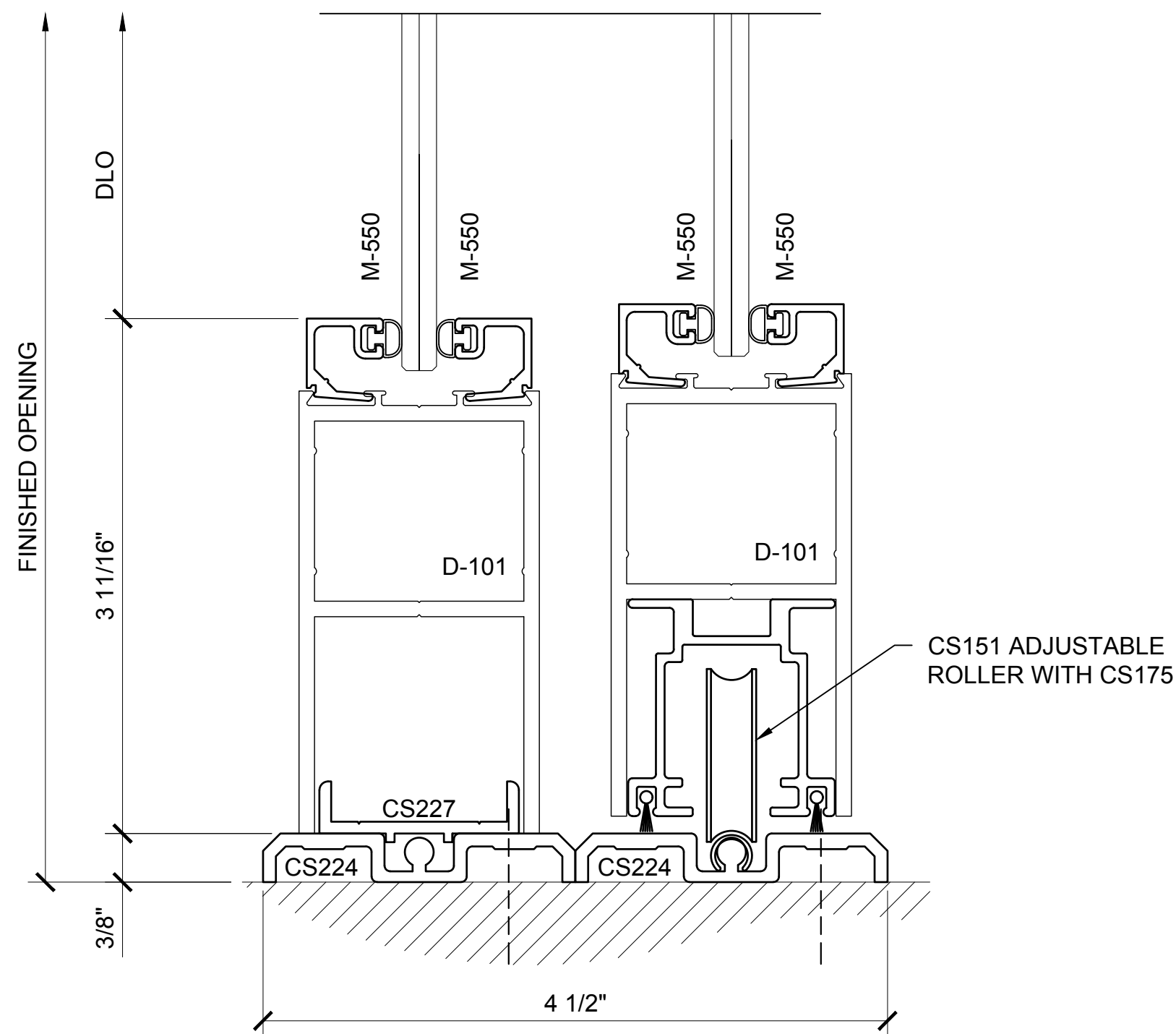
6



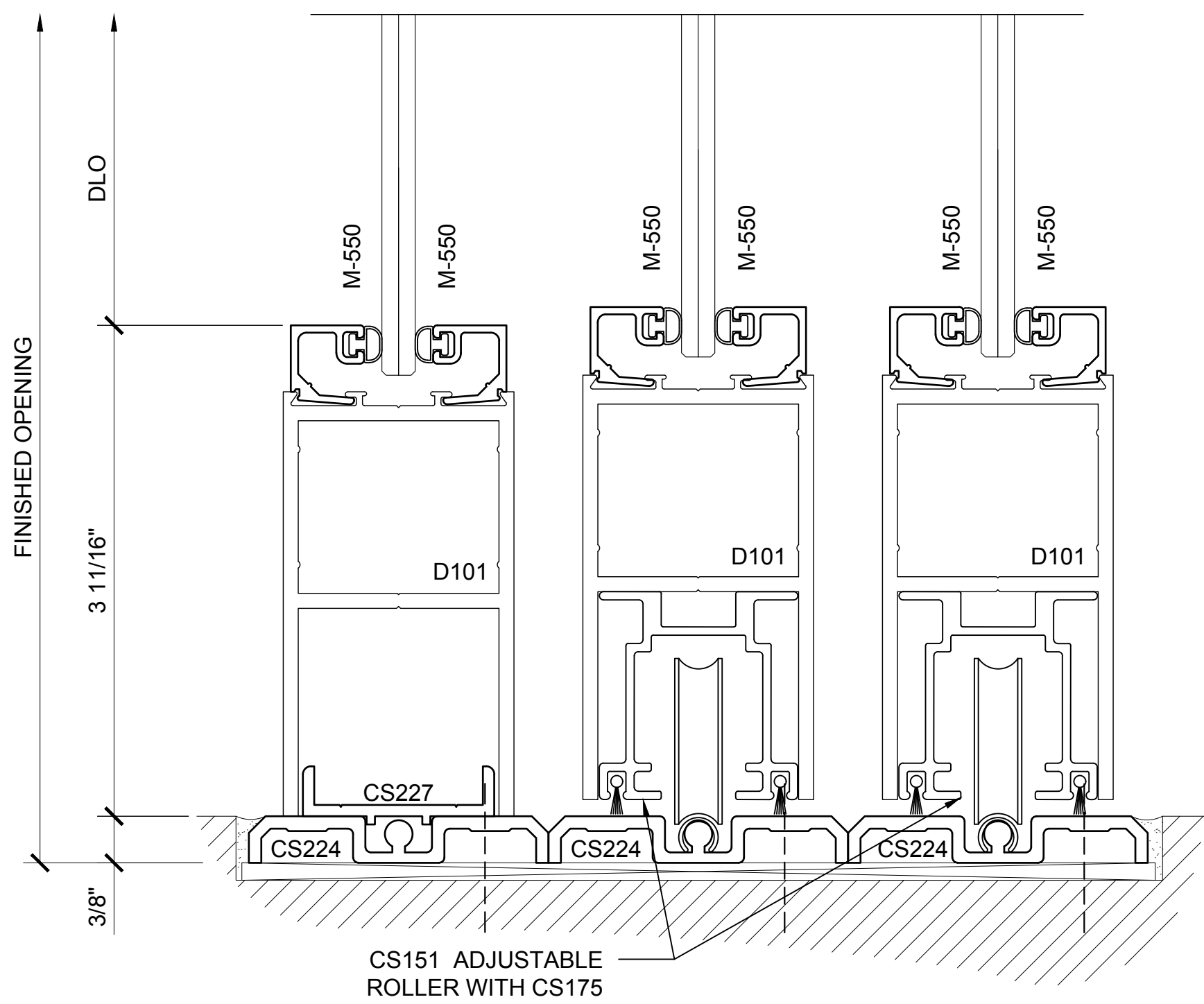
SECTION DETAIL AT TOP RAIL ⑦



SECTION DETAIL AT TOP RAIL ⑨



SECTION DETAIL AT
BOTTOM RAIL
SURFACE MOUNTED TRACKS ⑧



SECTION DETAIL AT
BOTTOM RAIL
RECESSED TRACKS ⑩

Revisions By:



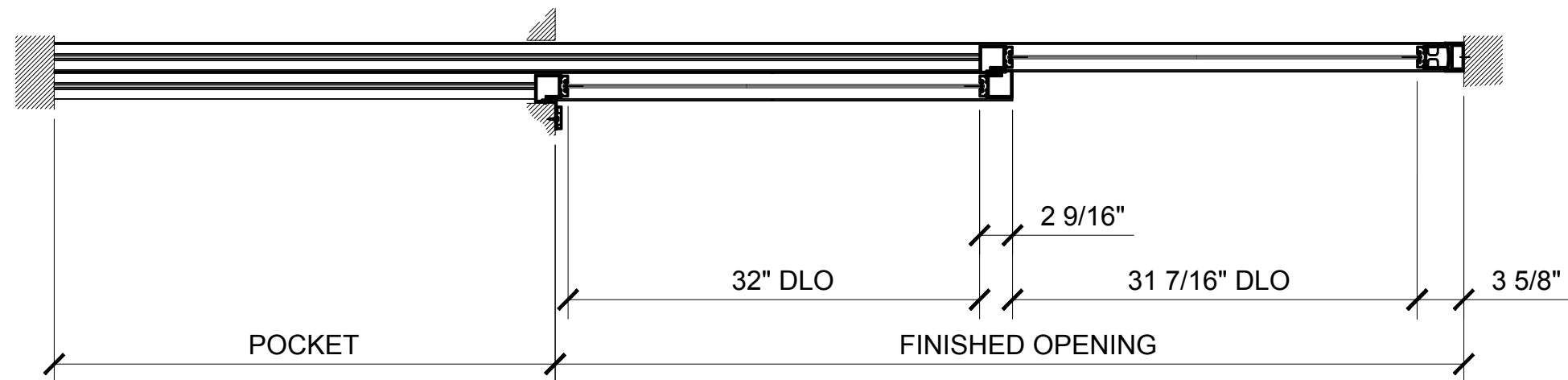
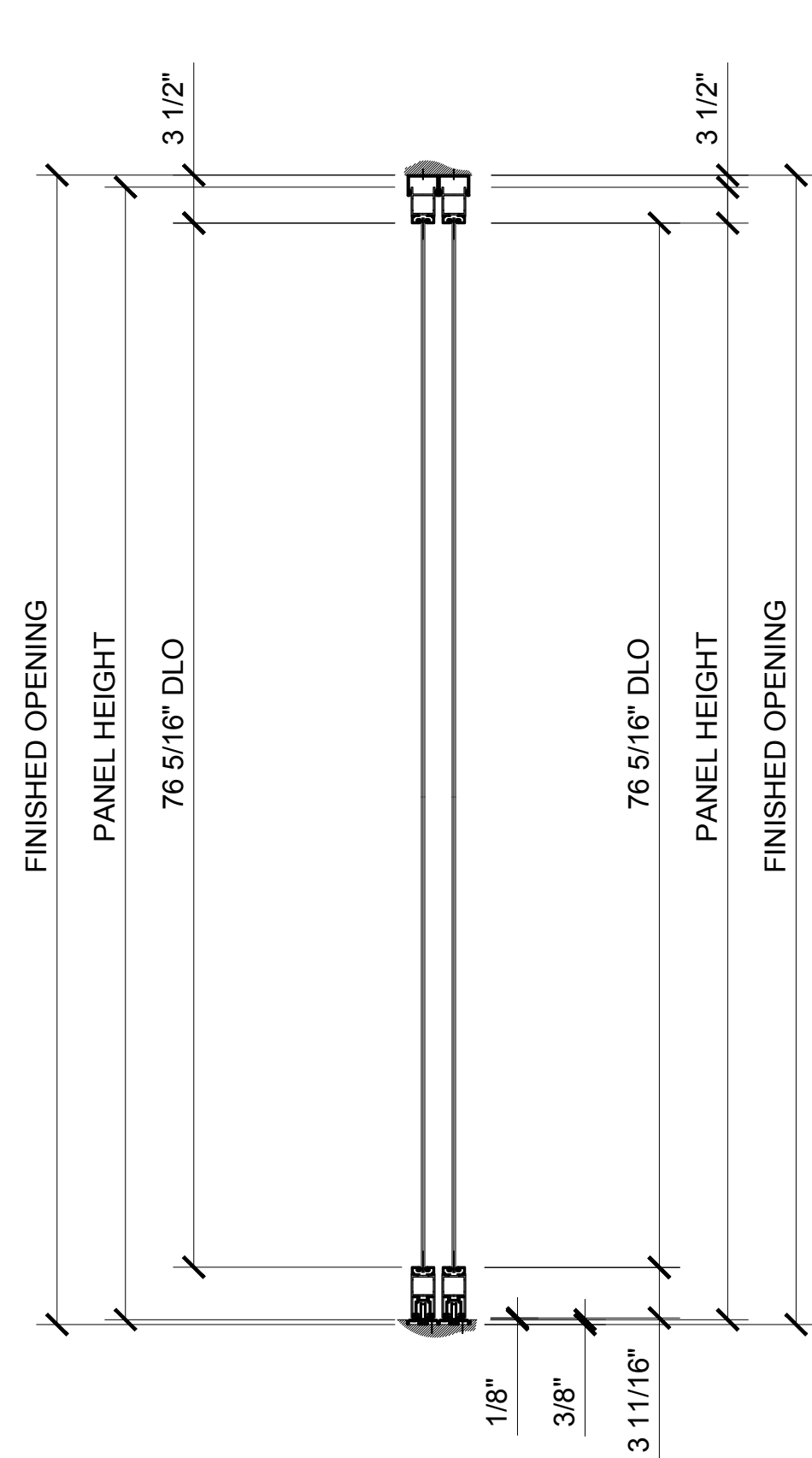
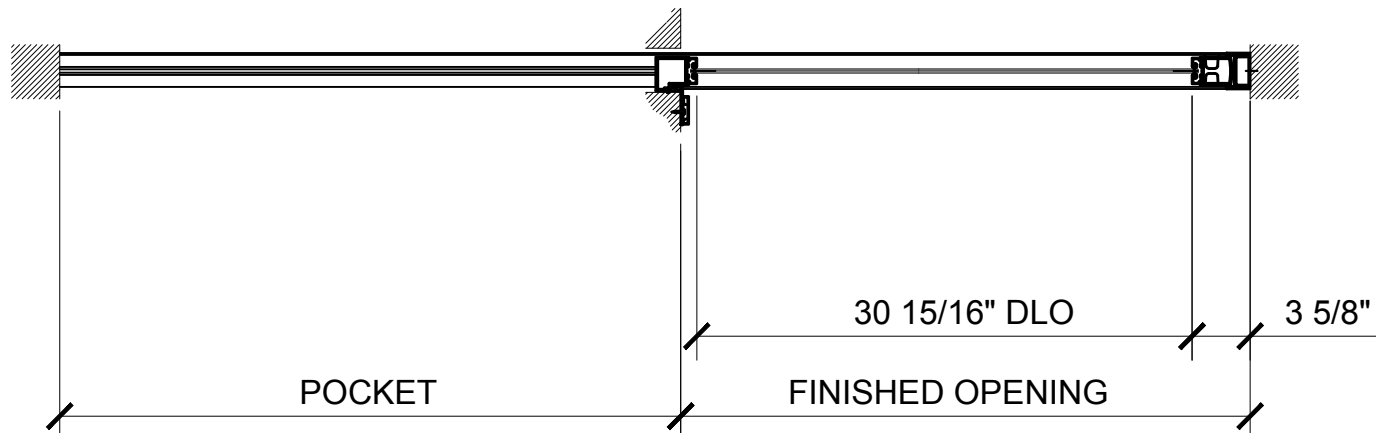
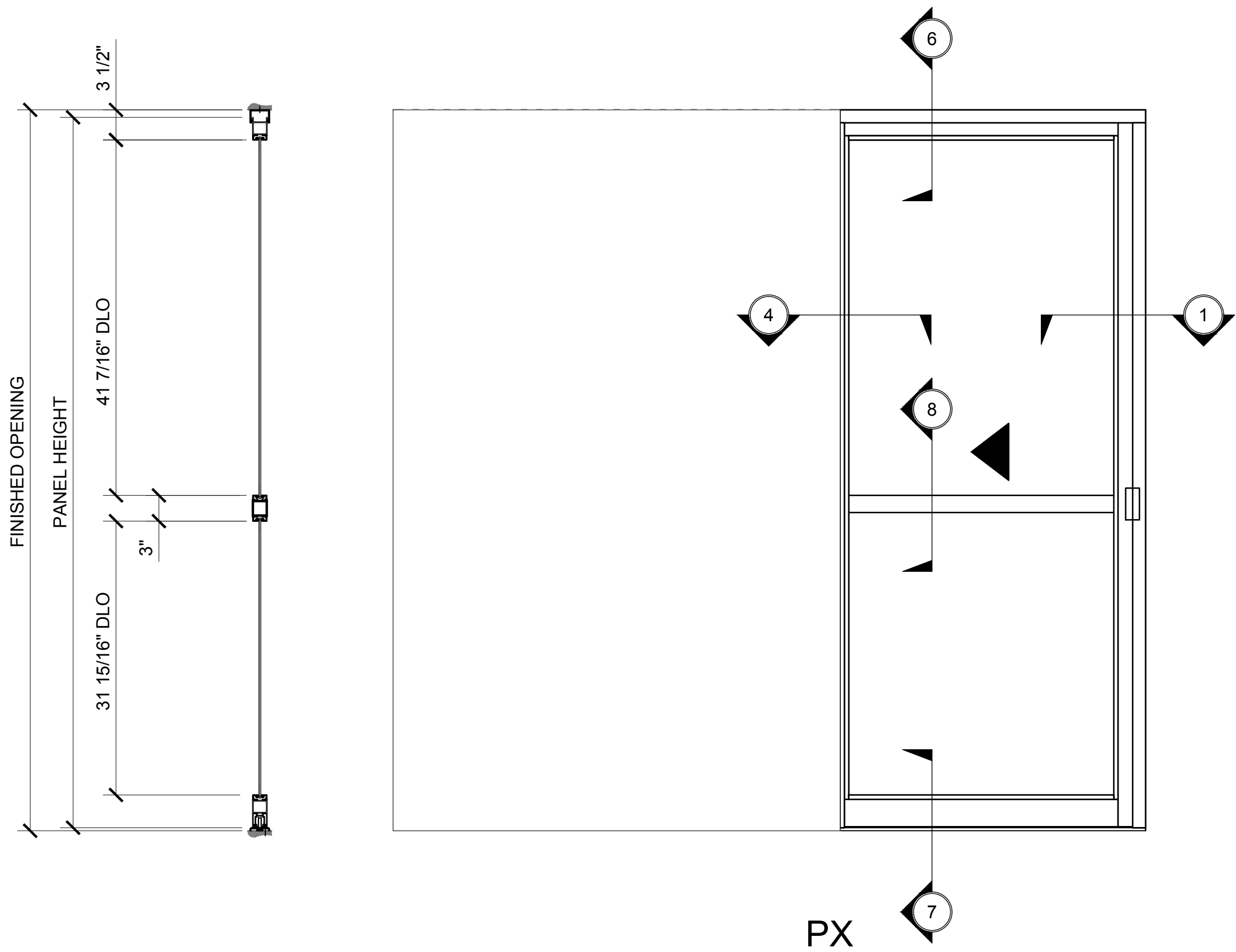
C.R. LAURENCE CO. ARCHITECTURAL PRODUCTS
2503 E. Vernon Avenue, Los Angeles, CA 90058-1897
PH (800) 421-6144 FX 800-597-7301 www.crlaurence.com

Discription:
CRL US ALUMINUM
SLIDING DOORS
SERIES 2000

Drawn By: AAD
Date: 10/12/16
Scale: AS NOTED
File Name:
US SERIES 2000.dwg
Sheet

SERIES 2000 SLIDING DOORS - POCKET DOORS - PX AND PXX

1" = 1'-0"



Revisions By:

CRL[®]
US ALUMINUM
C.R. LAURENCE CO. ARCHITECTURAL PRODUCTS
2503 E. Vernon Avenue, Los Angeles, CA 90058-1897
PH (800) 421-6144 FX 800-597-7301 www.crlaurence.com

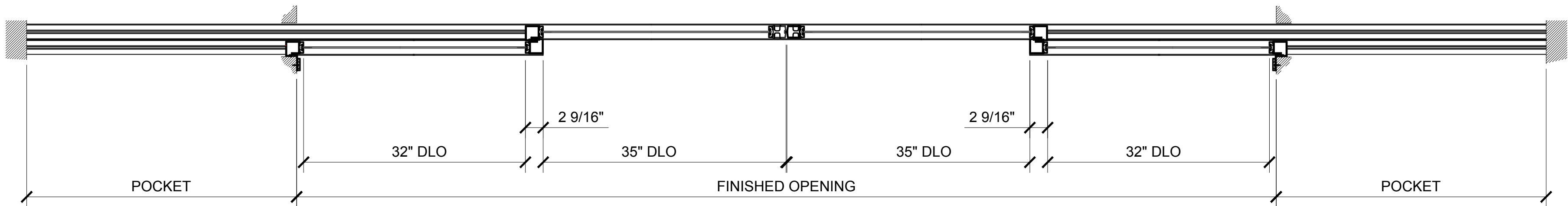
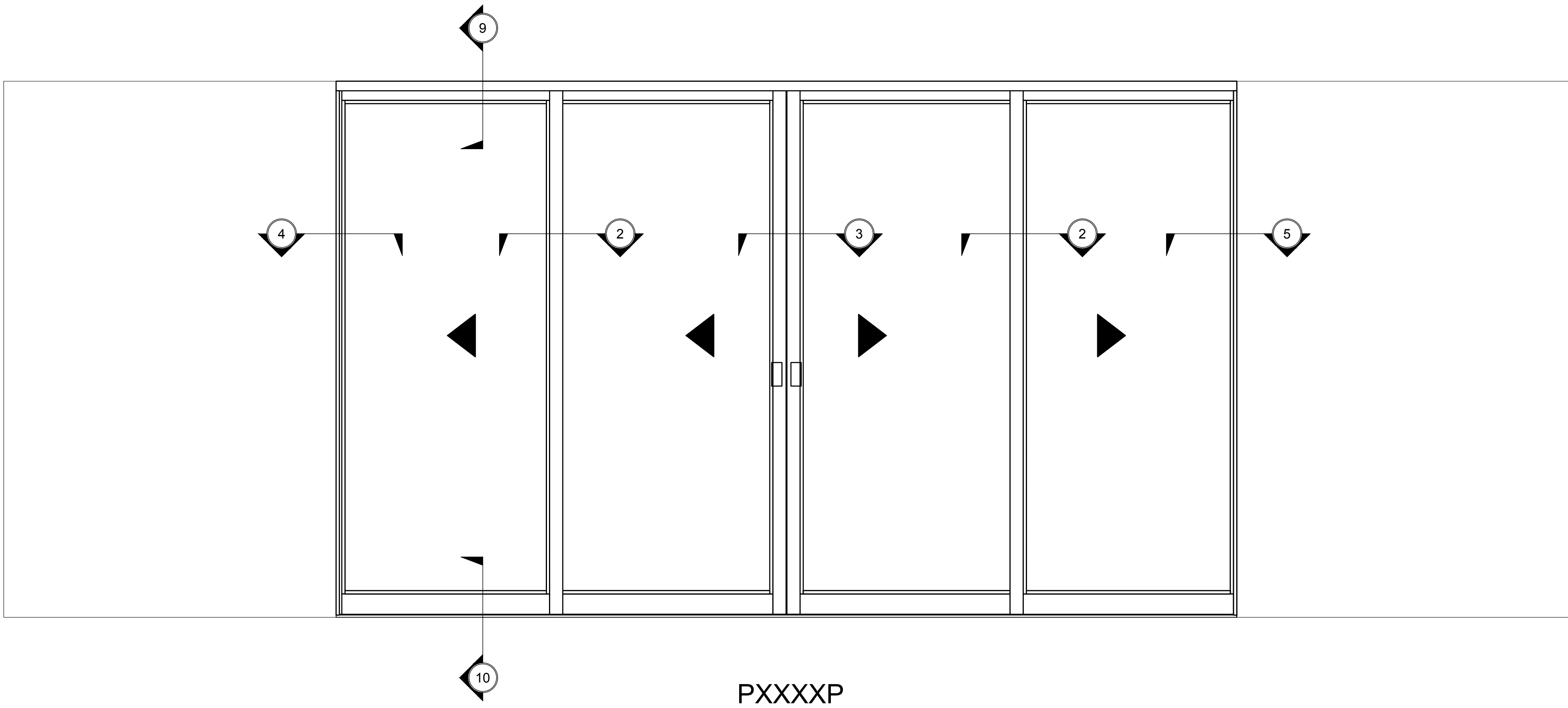
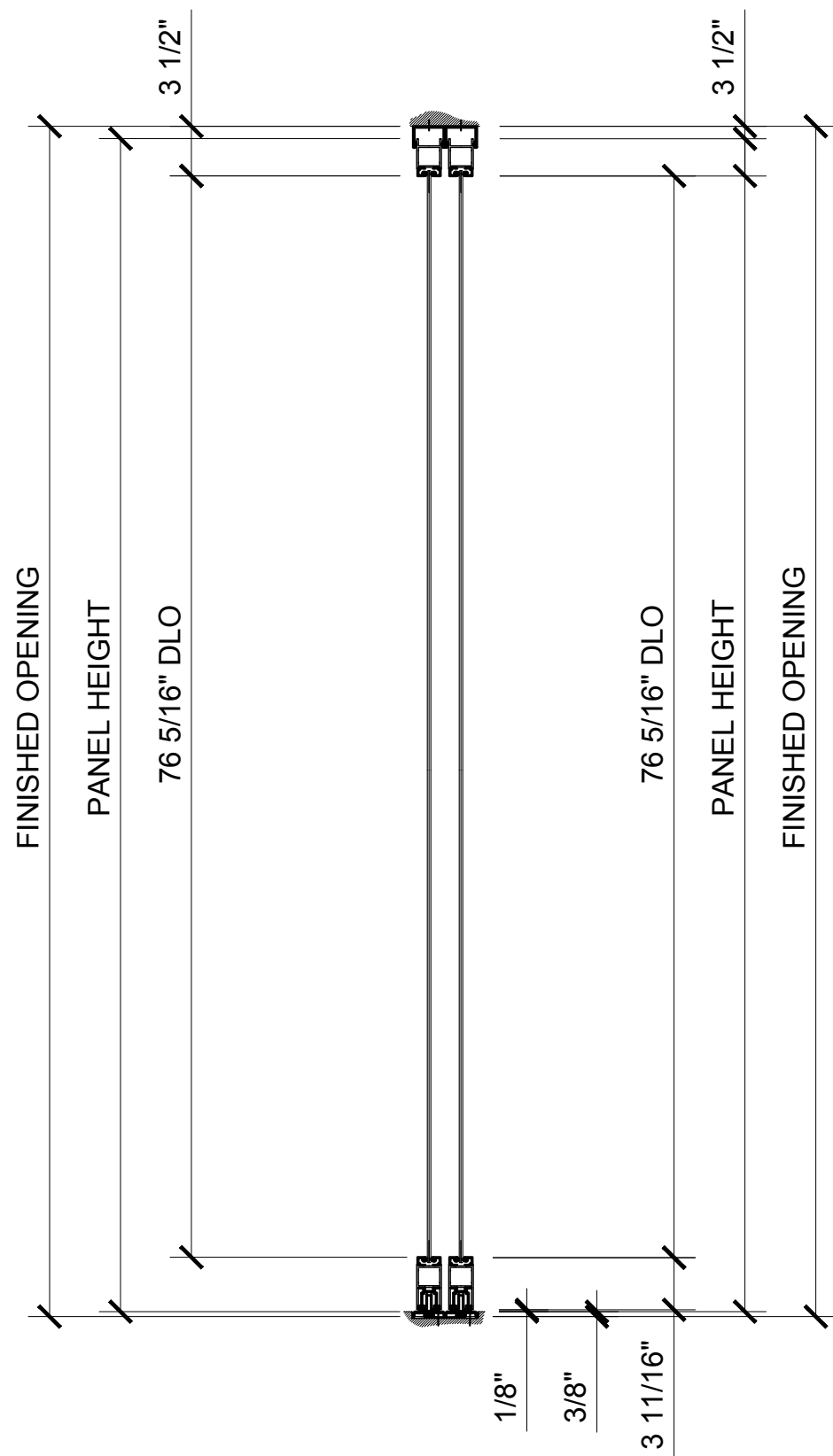
Discription:
CRL US ALUMINUM
SLIDING DOORS
SERIES 2000

Drawn By: AAD
Date: 10/12/16
Scale: AS NOTED
File Name:
US SERIES 2000.dwg

Sheet

SERIES 2000 SLIDING DOORS - POCKET DOORS - PXXXXP

1" = 1'-0"



Revisions By:

CRL[®]

US ALUMINUM

C.R. LAURENCE CO. ARCHITECTURAL PRODUCTS
2503 E. Vernon Avenue, Los Angeles, CA 90058-1897
PH (800) 421-6144 FX 800-597-7301 www.crlaurence.com

Discription:

CRL US ALUMINUM
SLIDING DOORS
SERIES 2000

Drawn By: AAD

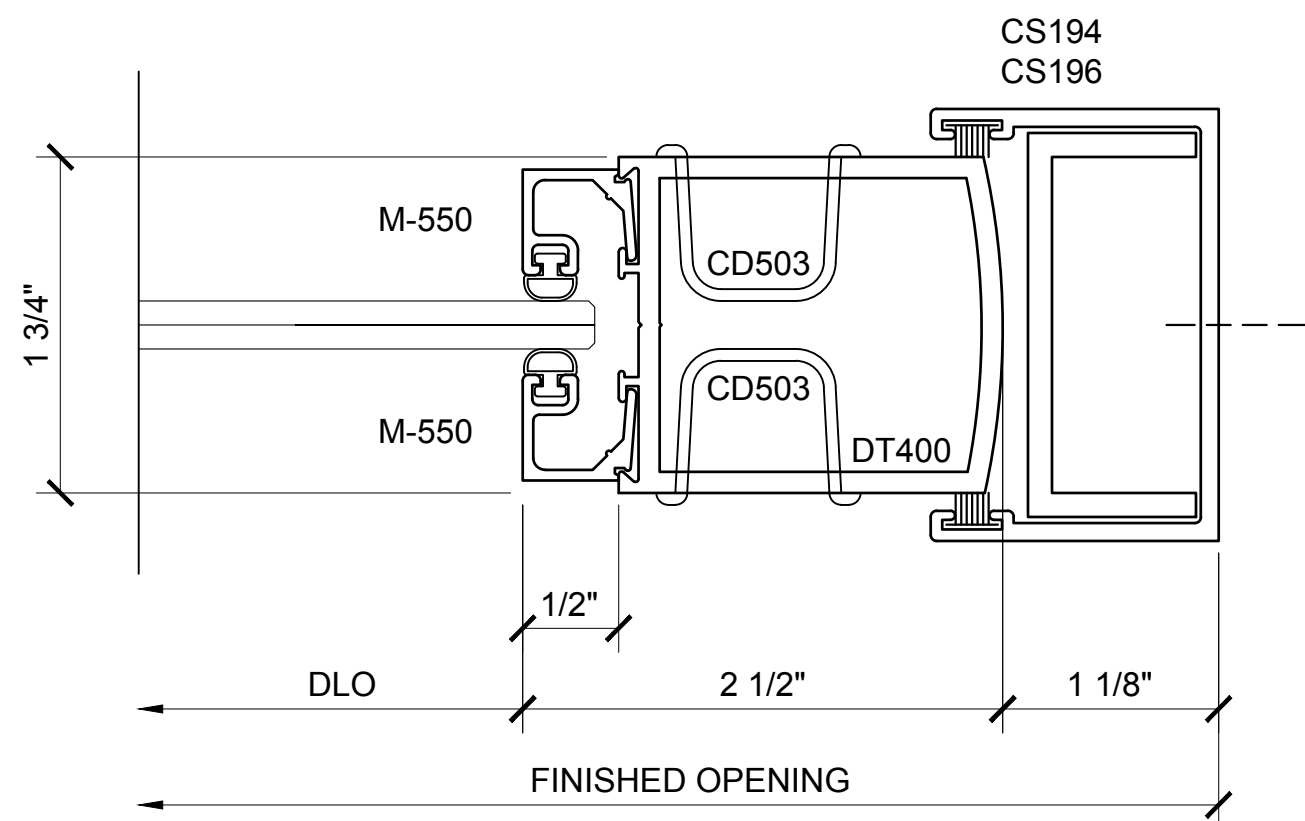
Date: 10/12/16

Scale: AS NOTED

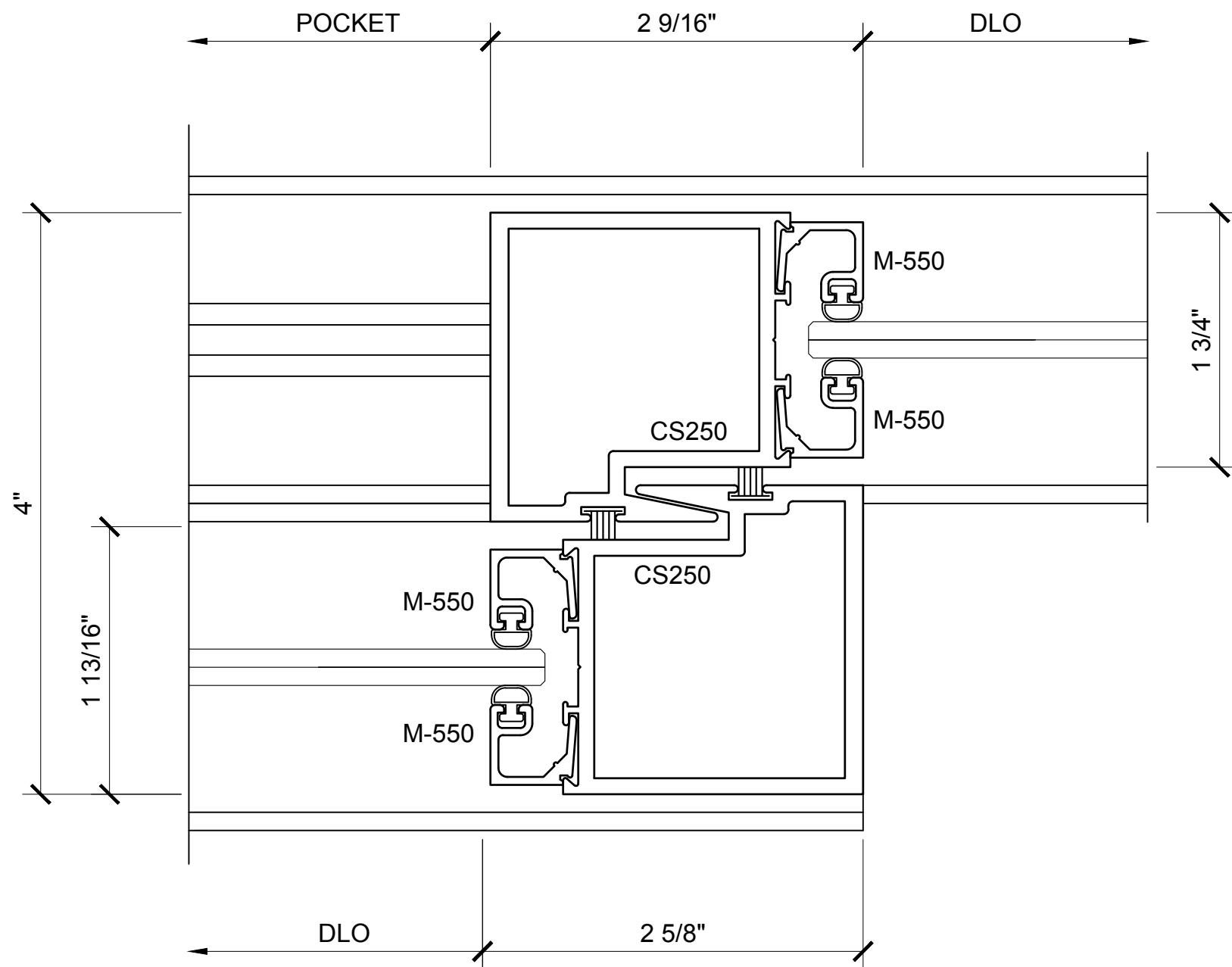
File Name:
US SERIES 2000.dwg

Sheet

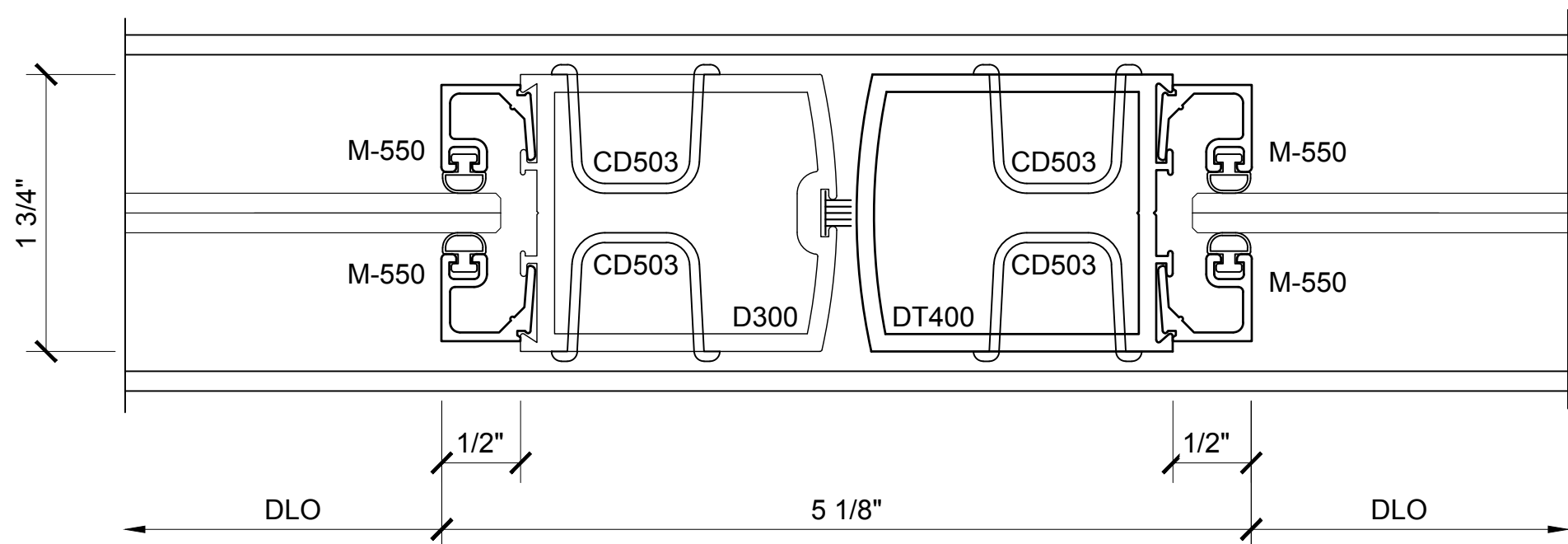
3.02



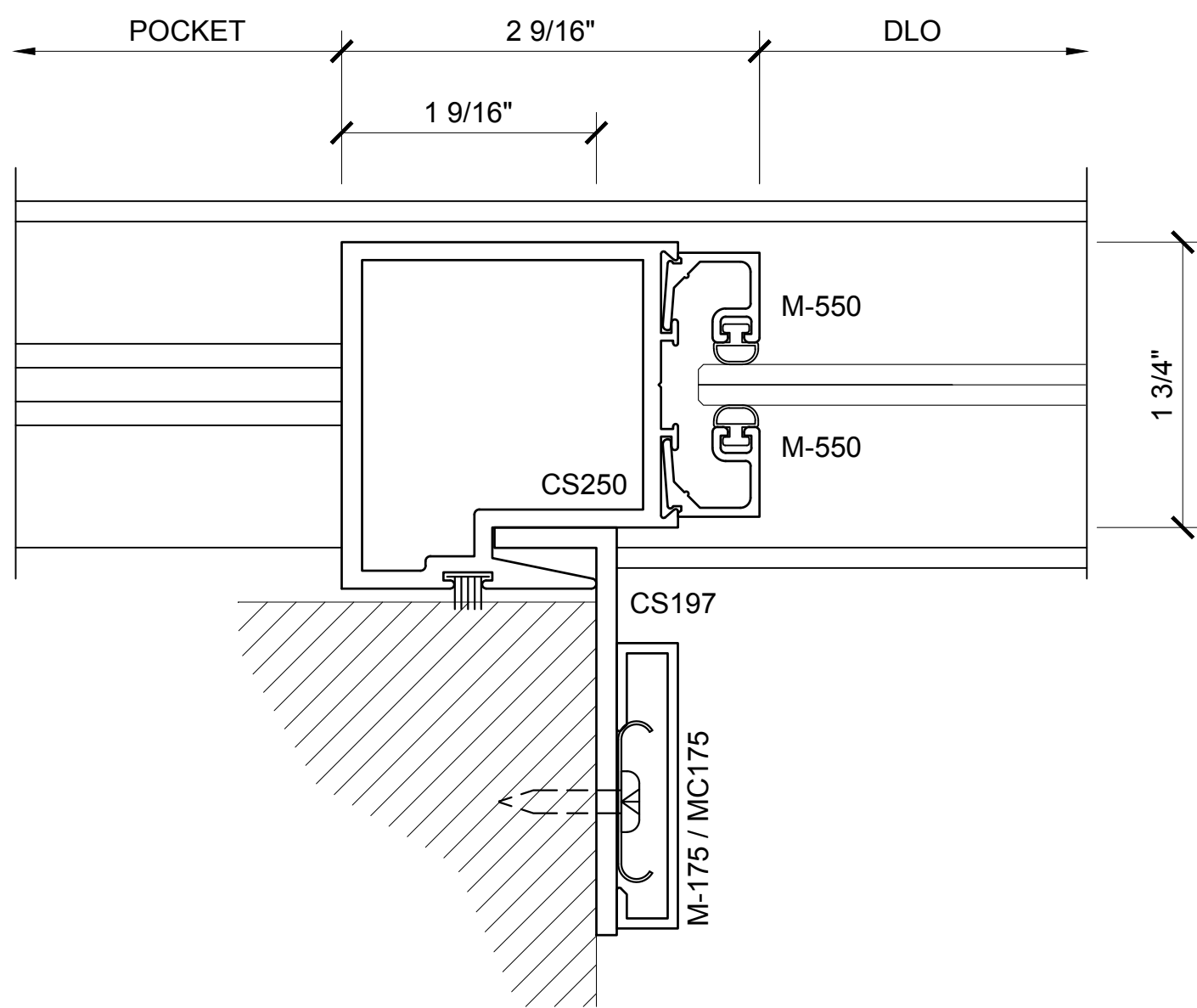
SECTION DETAIL AT DOOR
LOCKING JAMB 1



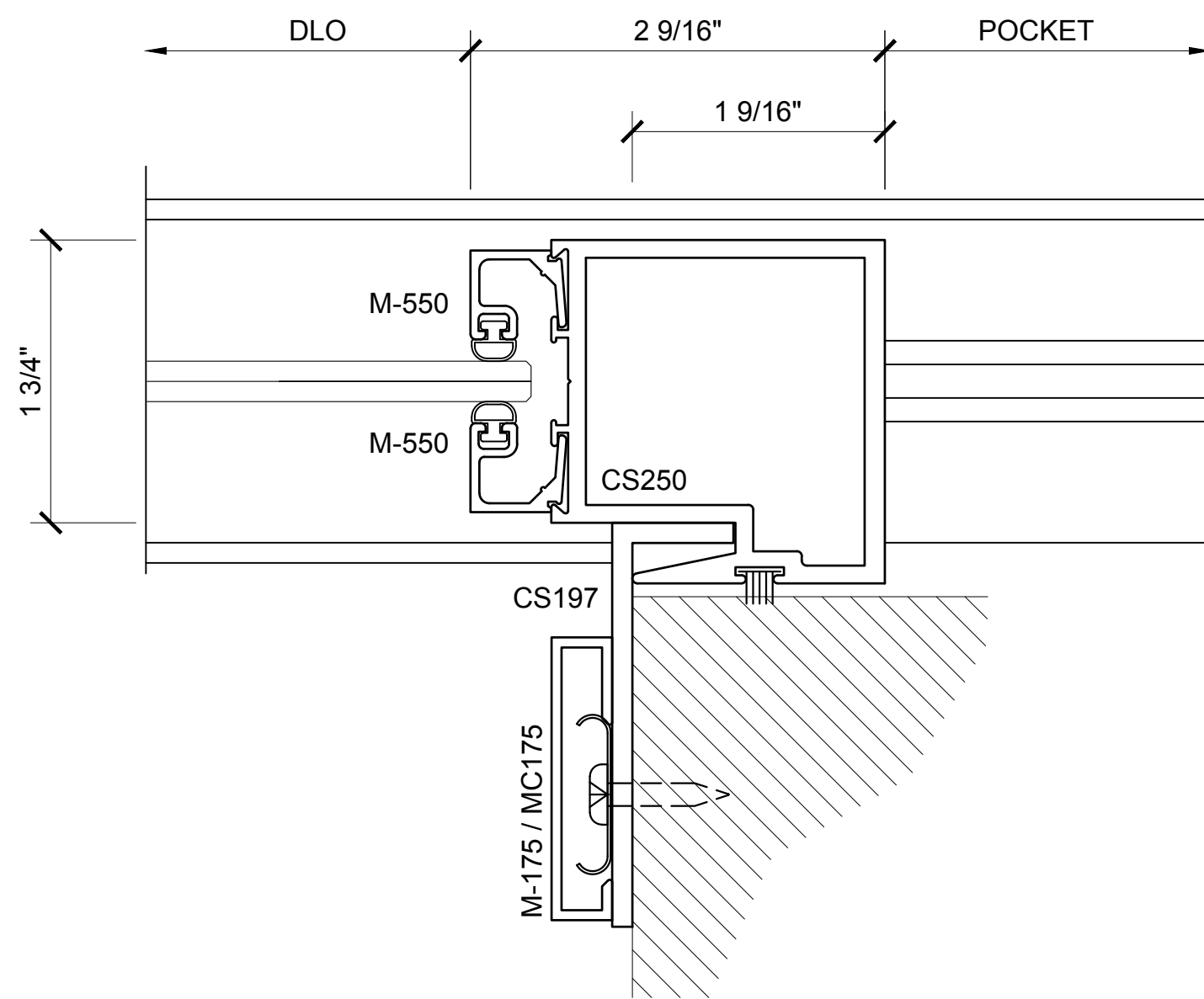
SECTION DETAIL AT DOOR
SLIDING JAMB 2



SECTION DETAIL AT DOOR
SLIDING JAMB 3



SECTION DETAIL AT DOOR
SLIDING JAMB 4



SECTION DETAIL AT DOOR
SLIDING JAMB 5

SERIES 2000 SLIDING DOORS - POCKET DOORS

1'-0" = 1'-0"

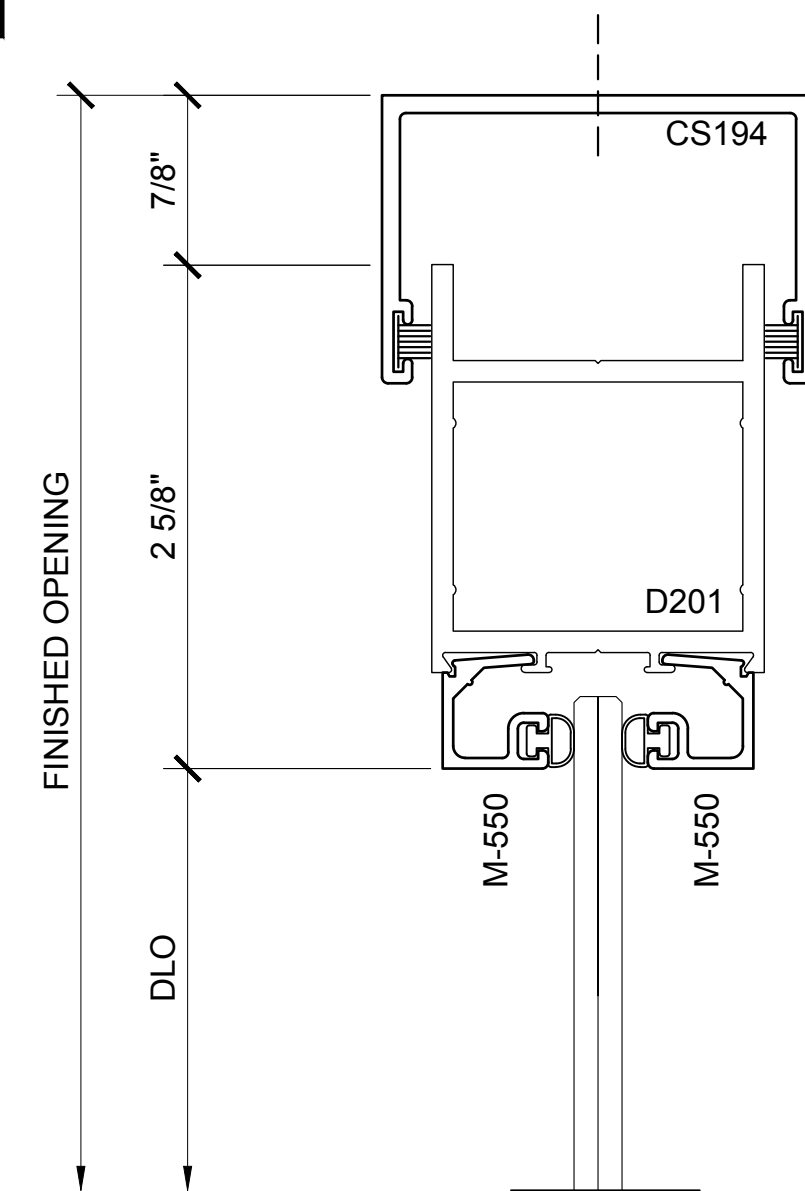
Revisions By:

C.R. LAURENCE CO. ARCHITECTURAL PRODUCTS
2503 E. Vernon Avenue, Los Angeles, CA 90058-1897
PH: (800) 421-6144 FX: 800-597-7301 www.crlaurence.com

Discription:
CRL US ALUMINUM
SLIDING DOORS
SERIES 2000

Drawn By: AAD
Date: 10/12/16
Scale: AS NOTED
File Name:
US SERIES 2000.dwg
Sheet

4.01



Technical drawing of a window assembly. The drawing shows a cross-section of a window frame with a double-pane unit. The frame is labeled "DM952". The panes are labeled "M-550". The drawing includes dimensions: "2\"/>

Technical drawing of a double door assembly showing cross-sections of the door and frame. The drawing includes labels for components: CS194 (top frame), D201 (door panel), M-550 (bottom frame), and DLO (door lock). Dimensions are indicated: 7/8" for the top frame thickness, 2 5/8" for the door panel height, and DLO for the door lock height. The drawing shows two doors with a central mullion.

Technical cross-section diagram of a window assembly. The diagram illustrates the vertical alignment and components of the window frame and sash.

Dimensions:

- FINISHED OPENING:** Indicated by a vertical dimension line on the left.
- 3 13/16"**: Dimension for the height of the window frame assembly.
- 3/8"**: Dimension for the height of the bottom rail assembly.
- DLO**: Dimension for the distance from the top of the frame to the top of the sash.

Components and Labels:

- M-550**: Label for the top sash component.
- D101**: Label for the main window frame component.
- CS224**: Label for the bottom rail component.
- CS151 ADJUSTABLE ROLLER WITH CS171**: Label for the bottom roller assembly, shown in a detailed view at the bottom right.

4.02