

U.S. ALUMINUM WINDOW WALL BG SYSTEMS

SERIES BG525

WINDOW WALL BG525 SYSTEMS SPECIFICATIONS

TECHNICAL DATA:

BG525 Systems are ideal for a low to mid-rise structural silicone glazed fixed horizontal ribbon window. These systems were designed for three types of configuration: two-sided structural silicone support; captured glazing; a combination of these two configurations.

Designed for stacking installation, these systems may be glazed from the interior or exterior.

Dual or two-tone colors can be achieved by specifying different finishes for the optional exterior face covers and interior mullions.

SPECIAL FEATURES:

- \* The sill channel provides a continuous gutter for exterior weepage through elongated baffled weep holes. Injection Molded End Dams are provided for sealing the gutter ends. Back portion of the channel remains dry where sill is anchored to the structure.
- \* A uniquely designed Injection Molded Water Deflector is used for weeping infiltrated water to the exterior at the intersection of the intermediate horizontal and vertical mullions. The Contoured Water Deflector allows for an uninterrupted gasket seal at the intersection of intermediate horizontal and vertical mullions.
- \* Reusable Twist-in Temporary Glass Retainers hold the glass in place during the structural silicone curing period. The plastic retainer is designed to work for both 1" (25) and 1/4" (6) infills.

SERIES	FACE WIDTH	DEPTH	GLAZING INFILLS	GLAZING METHOD
BG525	2-1/4" (57.2)	5-1/4" (133.4)	1" (25)	Exterior / Interior

STANDARD ABBREVIATIONS

- |      |                           |
|------|---------------------------|
| RO   | ROUGH OPENING             |
| FD   | FRAME DIMENSION           |
| DLO  | DAYLIGHT OPENING          |
| DO   | DOOR OPENING              |
| DD   | DOOR DIMENSION            |
| SMC  | SURFACE MOUNTED CLOSER    |
| OHCC | OVERHEAD CONCEALED CLOSER |

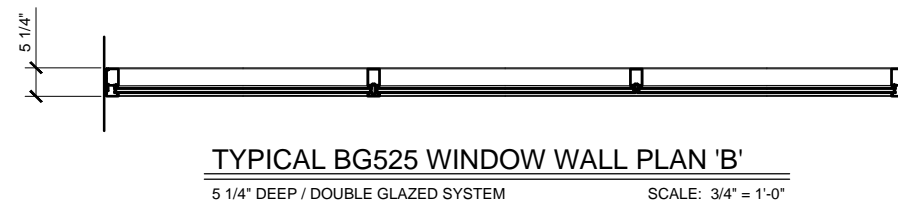
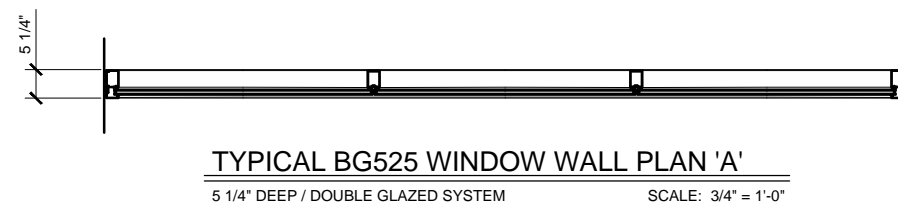
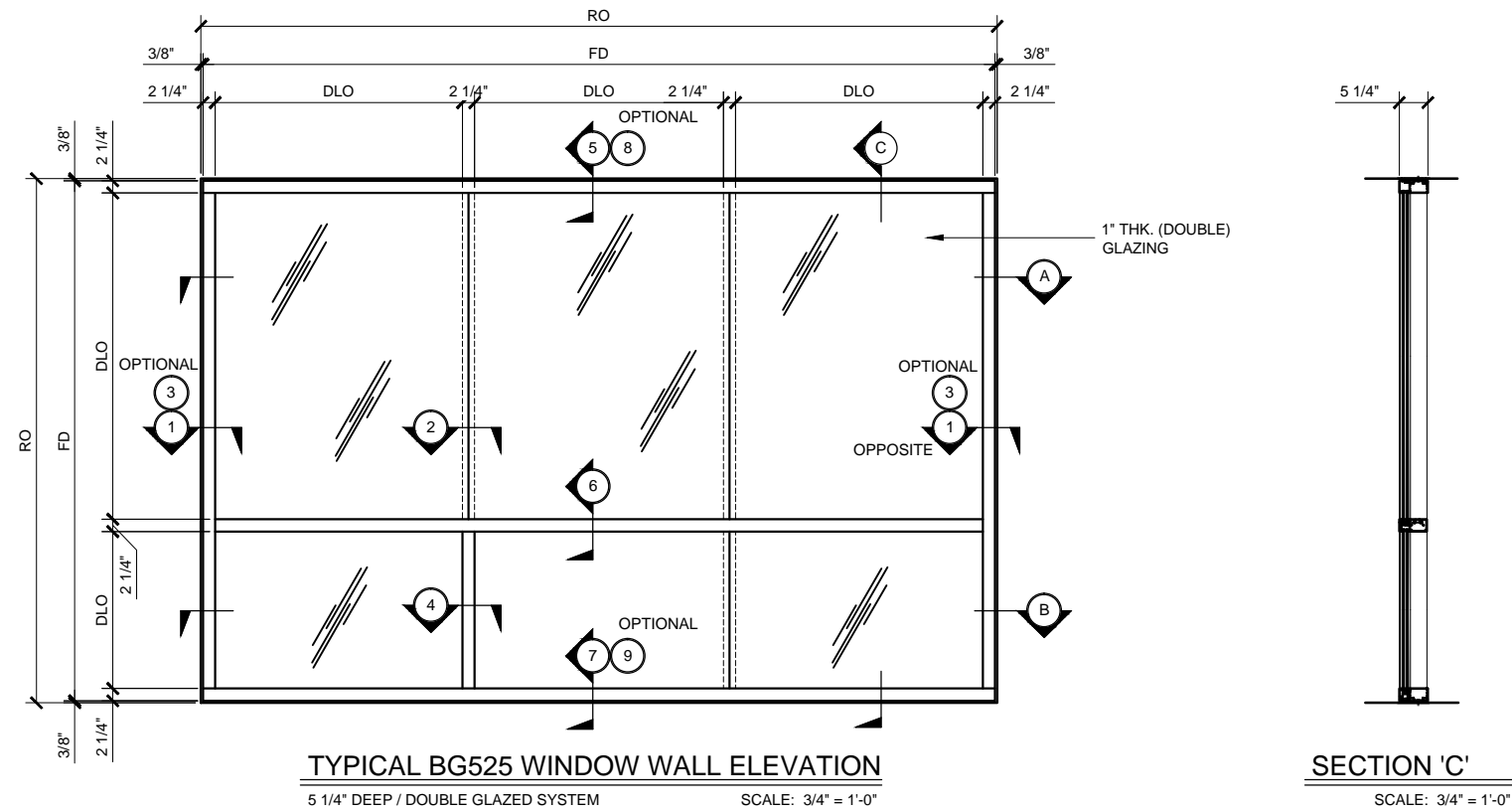
TABLE OF CONTENTS:

#	SHEET	D E S C R I P T I O N
1	COVER	TABLE OF CONTENTS / SPECIFICATIONS / SPECIAL FEATURES
2	3.01	WINDOW WALL SERIES BG525 TYPICAL ELEVATIONS
3	3.01a	WINDOW WALL SERIES BG525 TYPICAL ELEVATIONS
4	3.01b	WINDOW WALL SERIES BG525 TYPICAL ELEVATIONS
5	3.02	WINDOW WALL SERIES BG525 DETAILS
6	3.03	WINDOW WALL SERIES BG525 DETAILS
7	3.04	WINDOW WALL SERIES BG525 DETAILS
8	3.05	WINDOW WALL SERIES BG525 DETAILS
9	3.06	WINDOW WALL SERIES BG525 DETAILS
10	3.07	WINDOW WALL SERIES BG525 DETAILS
11	3.08	WINDOW WALL SERIES BG525 DETAILS
12	3.09	WINDOW WALL SERIES BG525 DETAILS
13	3.10	WINDOW WALL SERIES BG525 DETAILS
14	3.11	WINDOW WALL SERIES BG525 DETAILS

Revisions By:



U.S. ALUMINUM WINDOW WALL SERIES BG525 SYSTEM



STANDARD ABBREVIATIONS	
RO	ROUGH OPENING
FD	FRAME DIMENSION
DLO	DAYLIGHT OPENING
DO	DOOR OPENING
DD	DOOR DIMENSION
SMC	SURFACE MOUNTED CLOSER
OHCC	OVERHEAD CONCEALED CLOSER

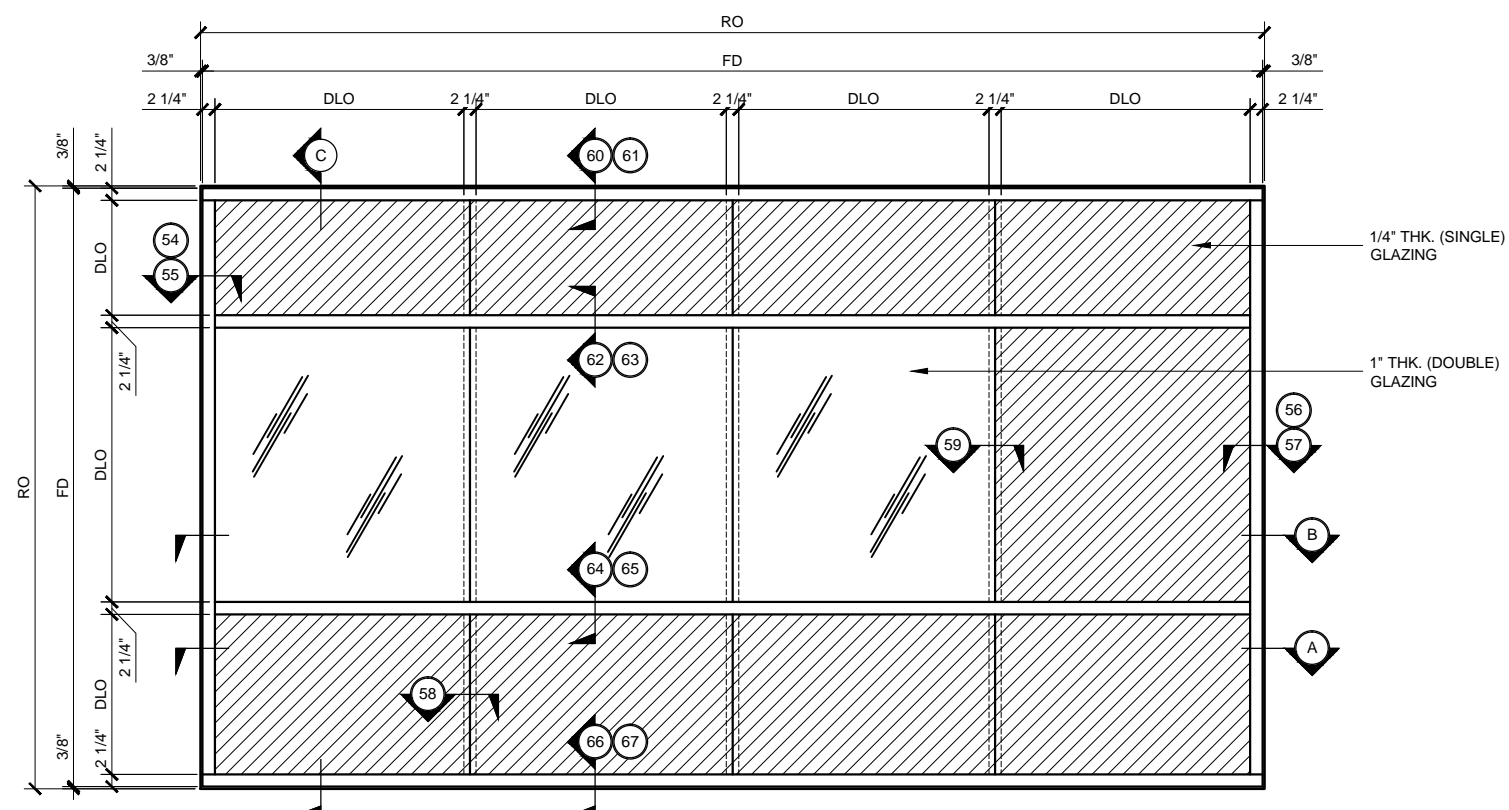
WINDOW WALL SERIES BG525 TYPICAL ELEVATIONS

5 1/4" DEEP SYSTEM

Revisions By:

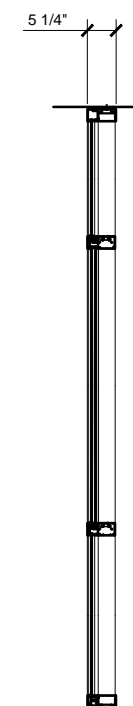
## U.S. ALUMINUM WINDOW WALL SERIES BG525 SYSTEM

Revisions By:



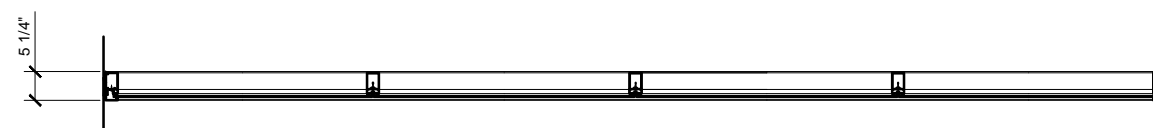
## BG525 WINDOW WALL TRANSITION ELEVATION

5 1/4" DEEP / DOUBLE GLAZED - SINGLE GLAZED SYSTEM SCALE: 3/4" = 1'-0"



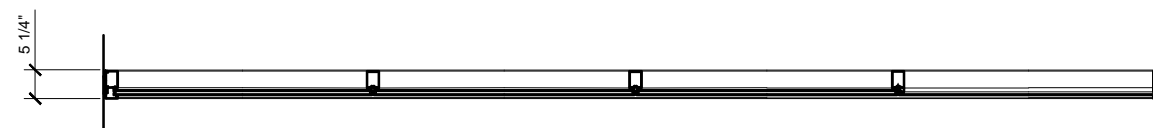
SECTION 'C'

SCALE: 3/4" = 1'-0"



BG525 WINDOW WALL TRANSITION PLAN 'A'

5 1/4" DEEP / DOUBLE GLAZED - SINGLE GLAZED SYSTEM SCALE: 3/4" = 1'-0"



BG525 WINDOW WALL TRANSITION PLAN 'B'

5 1/4" DEEP / DOUBLE GLAZED - SINGLE GLAZED SYSTEM SCALE: 3/4" = 1'-0"

## STANDARD ABBREVIATIONS

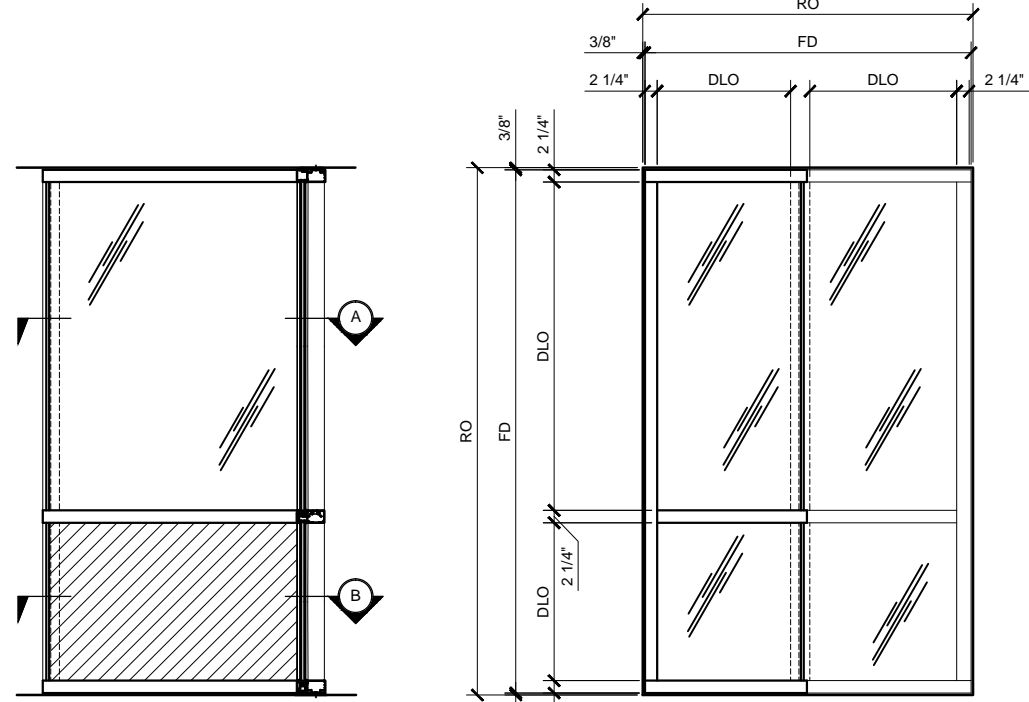
RO	ROUGH OPENING
FD	FRAME DIMENSION
DLO	DAYLIGHT OPENING
DO	DOOR OPENING
DD	DOOR DIMENSION
SMC	SURFACE MOUNTED CLOSER
OHCC	OVERHEAD CONCEALED CLOSER

## WINDOW WALL SERIES BG525 TYPICAL ELEVATIONS

5 1/4" DEEP SYSTEM

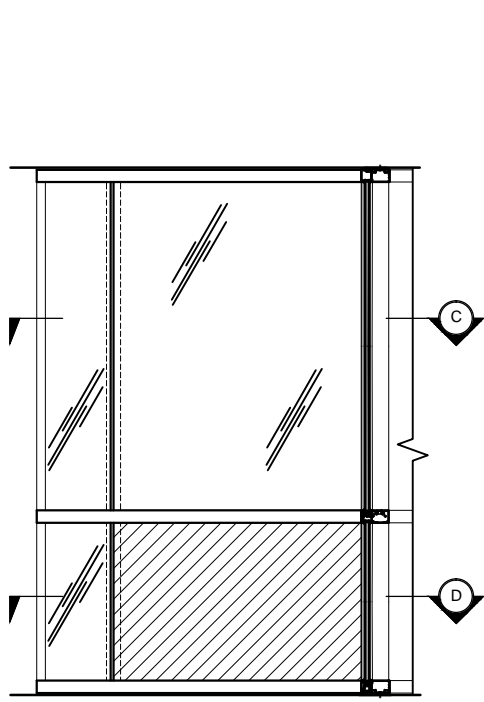


U.S. ALUMINUM WINDOW WALL SERIES BG525 SYSTEM

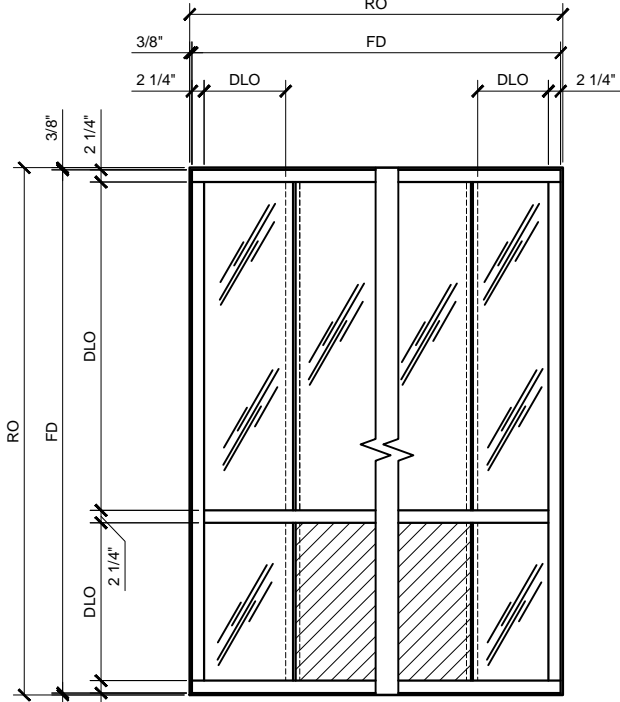


WINDOW WALL ELEVATION 'E'  
SCALE: 3/4" = 1'-0"

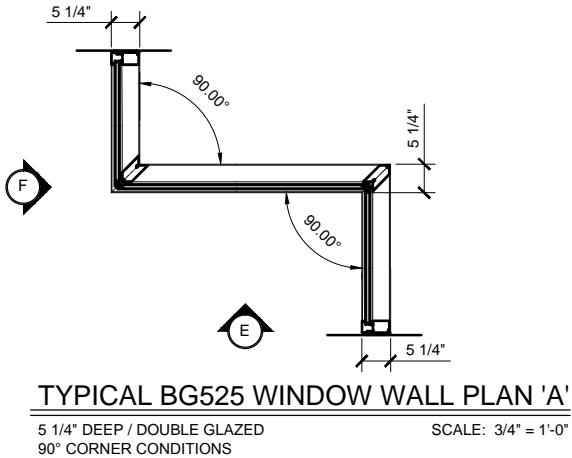
WINDOW WALL ELEVATION 'F'  
SCALE: 3/4" = 1'-0"



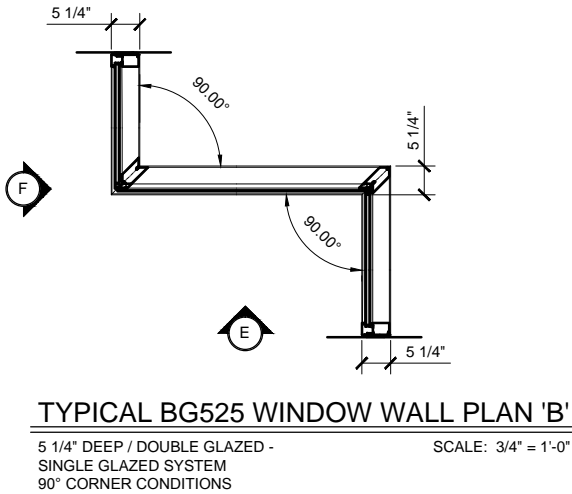
WINDOW WALL ELEVATION 'G'  
SCALE: 3/4" = 1'-0"



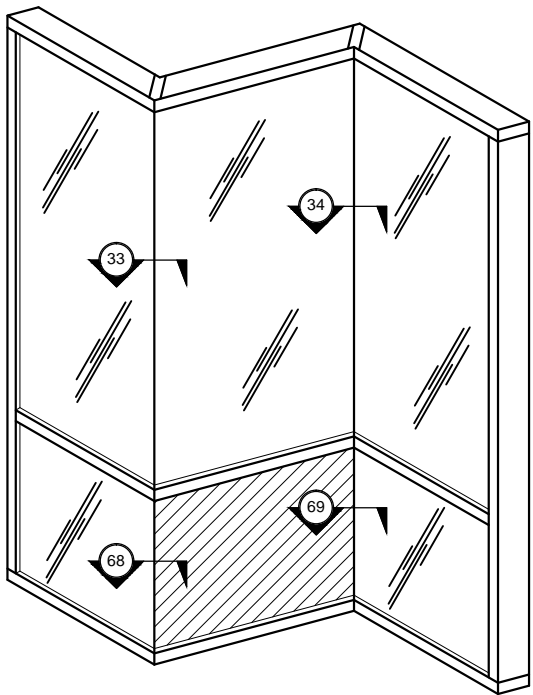
WINDOW WALL ELEVATION 'H'  
SCALE: 3/4" = 1'-0"



TYPICAL BG525 WINDOW WALL PLAN 'A'  
5 1/4" DEEP / DOUBLE GLAZED  
90° CORNER CONDITIONS  
SCALE: 3/4" = 1'-0"



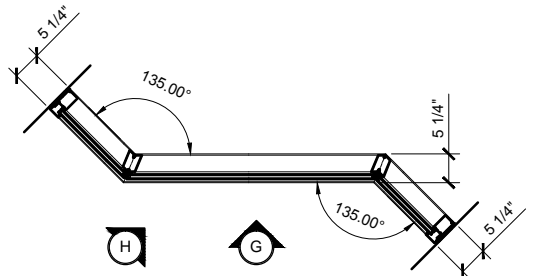
TYPICAL BG525 WINDOW WALL PLAN 'B'  
5 1/4" DEEP / DOUBLE GLAZED -  
SINGLE GLAZED SYSTEM  
90° CORNER CONDITIONS  
SCALE: 3/4" = 1'-0"



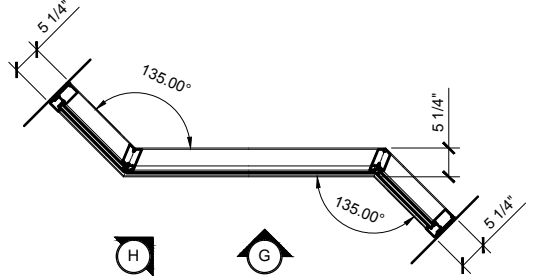
BG525 90 DEGREE CORNER ELEVATION  
5 1/4" DEEP / DOUBLE GLAZED -  
SINGLE GLAZED SYSTEM  
SCALE: 3/4" = 1'-0"

STANDARD ABBREVIATIONS

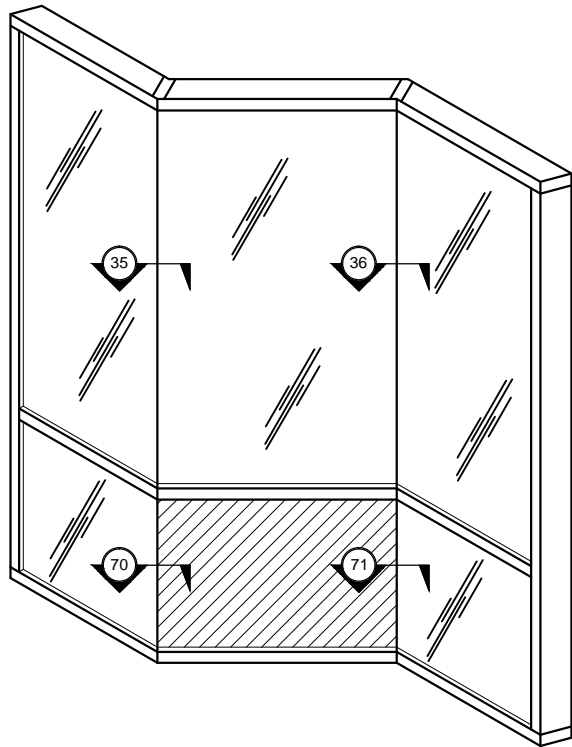
RO	ROUGH OPENING
FD	FRAME DIMENSION
DLO	DAYLIGHT OPENING
DO	DOOR OPENING
DD	DOOR DIMENSION
SMC	SURFACE MOUNTED CLOSER
OHCC	OVERHEAD CONCEALED CLOSER



TYPICAL BG525 WINDOW WALL PLAN 'C'  
5 1/4" DEEP / DOUBLE GLAZED  
135° CORNER CONDITIONS  
SCALE: 3/4" = 1'-0"



TYPICAL BG525 WINDOW WALL PLAN 'D'  
5 1/4" DEEP / DOUBLE GLAZED -  
SINGLE GLAZED SYSTEM  
135° CORNER CONDITIONS  
SCALE: 3/4" = 1'-0"



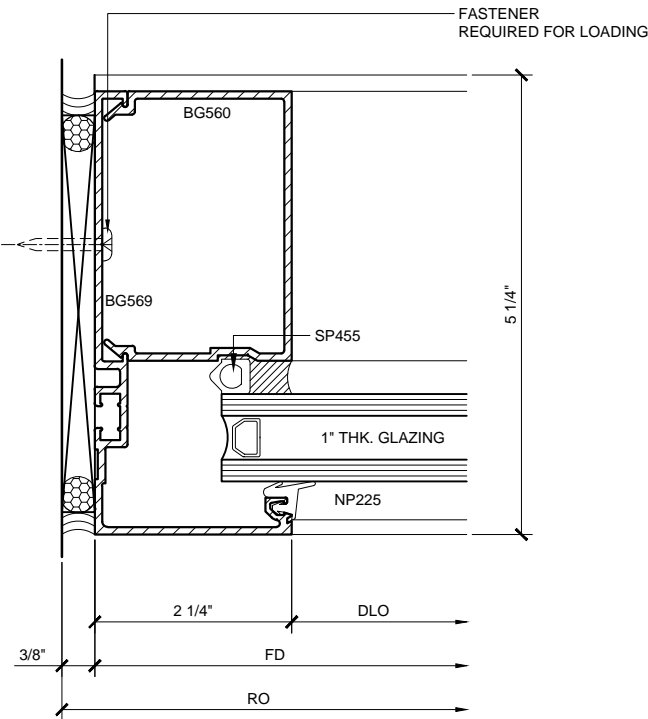
BG525 135 DEGREE CORNER ELEVATION  
5 1/4" DEEP / DOUBLE GLAZED -  
SINGLE GLAZED SYSTEM  
SCALE: 3/4" = 1'-0"

WINDOW WALL SERIES BG525 TYPICAL ELEVATIONS

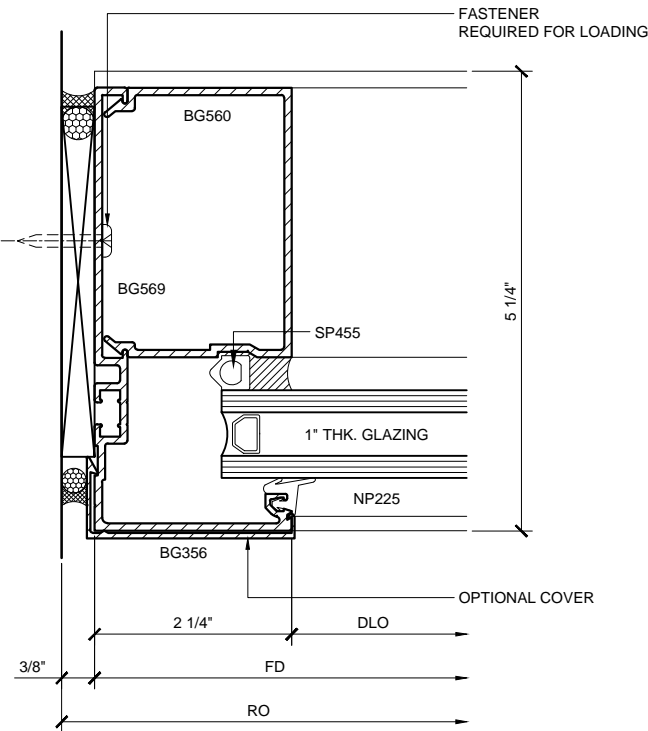
5 1/4" DEEP SYSTEM

Revisions By:

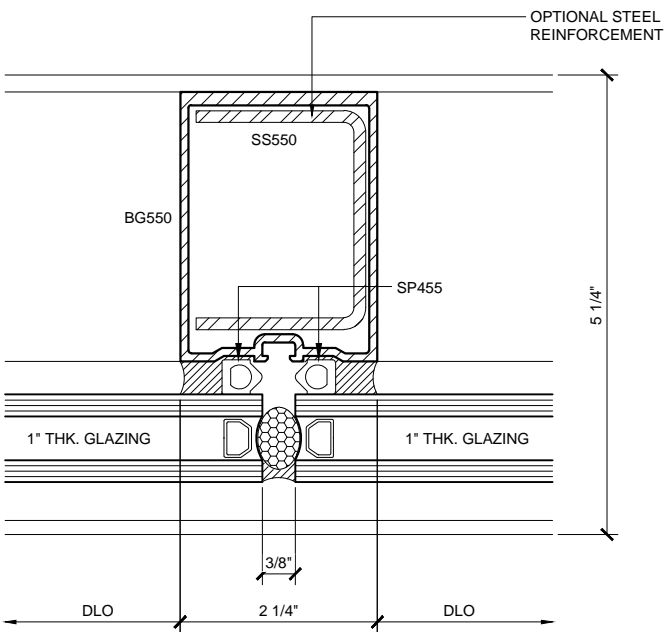
U.S. ALUMINUM WINDOW WALL SERIES BG525 SYSTEM



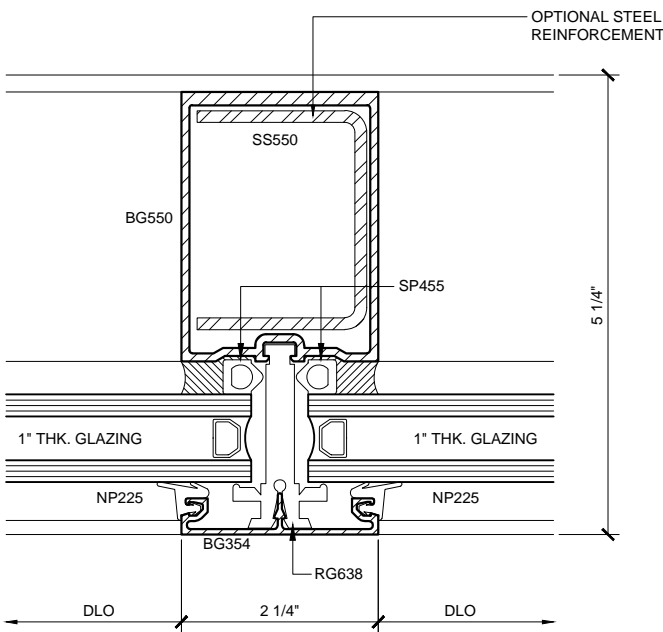
JAMB PLAN (24)  
BG525 DOUBLE GLAZED 1'-0"=1'-0"



JAMB PLAN w/ OPTINAL FACE CAP (26)  
BG525 DOUBLE GLAZED 1'-0"=1'-0"



INTERMEDIATE VERTICAL (25)  
BG525 DOUBLE GLAZED 1'-0"=1'-0"



INTERMEDIATE VERTICAL (27)  
BG525 DOUBLE GLAZED 1'-0"=1'-0"

WINDOW WALL SERIES BG525 - 5 1/4" DEEP SYSTEM DETAILS

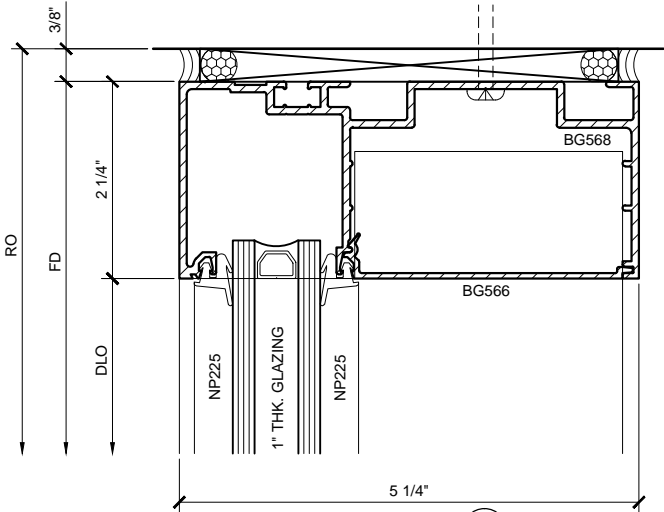
Revisions By:

**CAL** ALUMINUM  
C.R. LAURENCE CO. ARCHITECTURAL PRODUCTS  
2503 E. Vernon Avenue, Los Angeles, CA 90058-1897  
PH (800) 421-6144 FAX (800) 587-7201 www.crlaurence.com

Description:  
U.S. ALUMINUM  
WINDOW WALL - BG  
SERIES BG525  
SYSTEM DRAWINGS

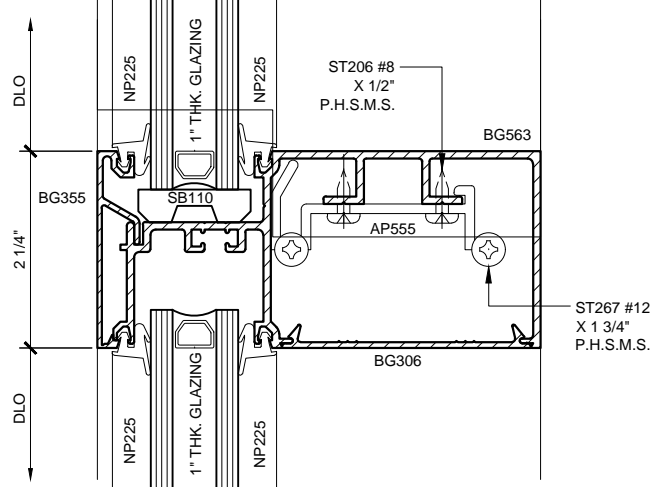
Drawn By: RPD  
Date: 03/23/15  
Scale: AS NOTED  
File Name: BG525.dwg  
Sheet

U.S. ALUMINUM WINDOW WALL SERIES BG525 SYSTEM



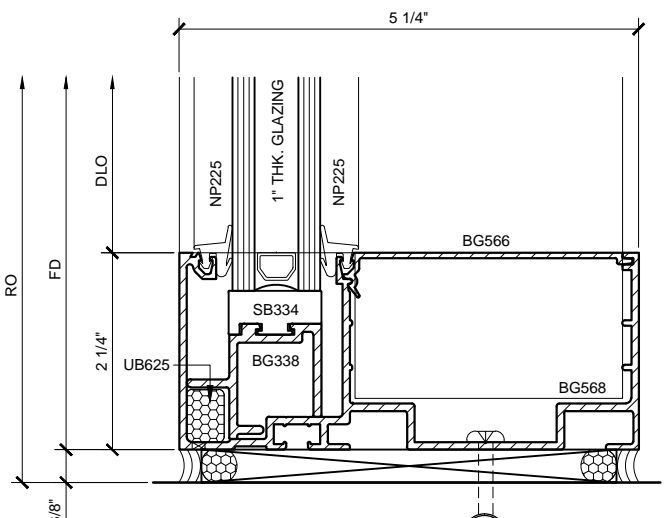
HEAD DETAIL 28

BG525 DOUBLE GLAZED 1'-0"=1'-0"



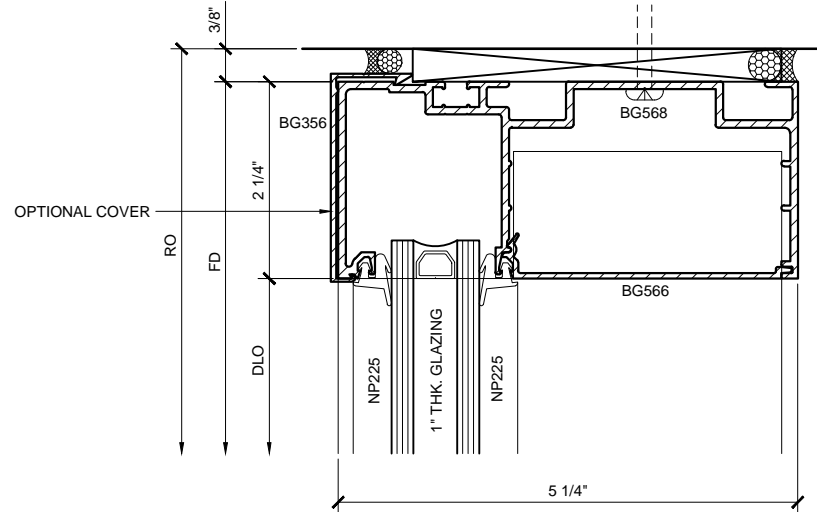
INTERMEDIATE HOR. DETAIL 29

BG525 DOUBLE GLAZED 1'-0"=1'-0"



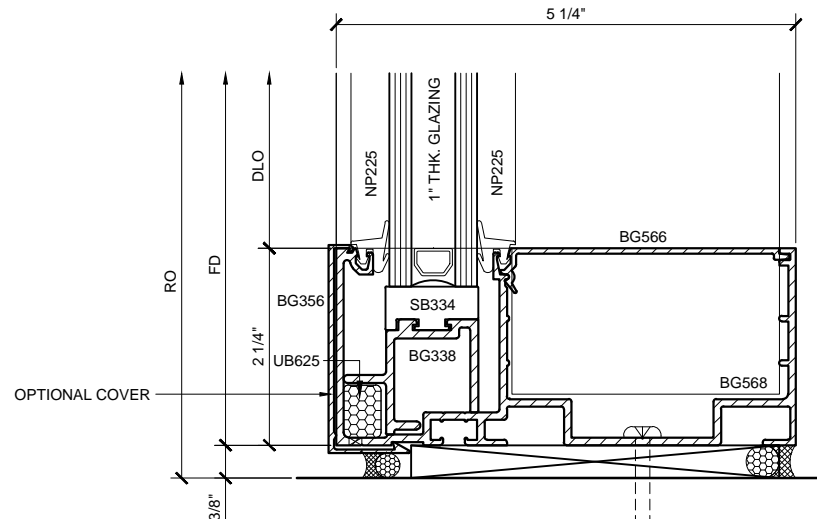
SILL DETAIL 30

BG525 DOUBLE GLAZED 1'-0"=1'-0"



HEAD DETAIL w/ OPTIONAL FACE CAP 31

BG525 DOUBLE GLAZED 1'-0"=1'-0"



SILL DETAIL 32

BG525 DOUBLE GLAZED 1'-0"=1'-0"

WINDOW WALL SERIES BG525 - 5 1/4" DEEP SYSTEM DETAILS

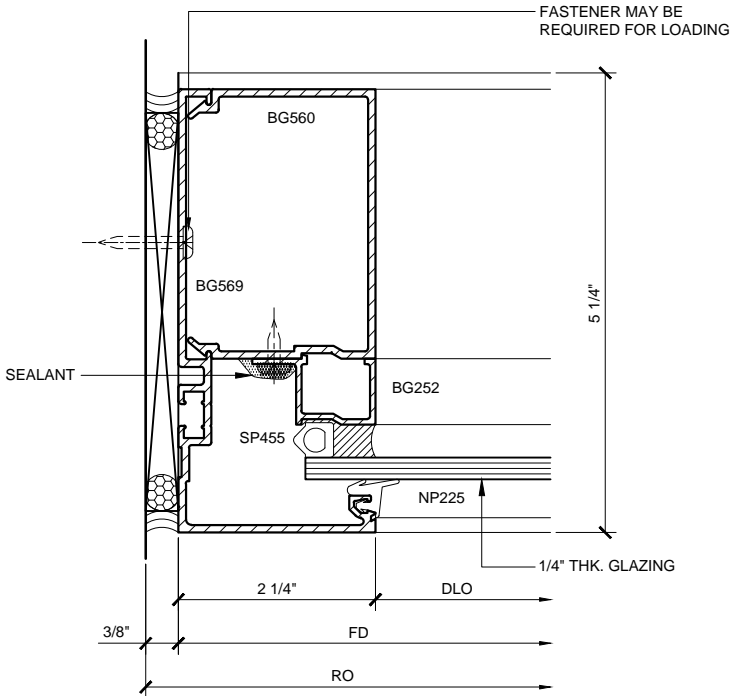
Revisions By:



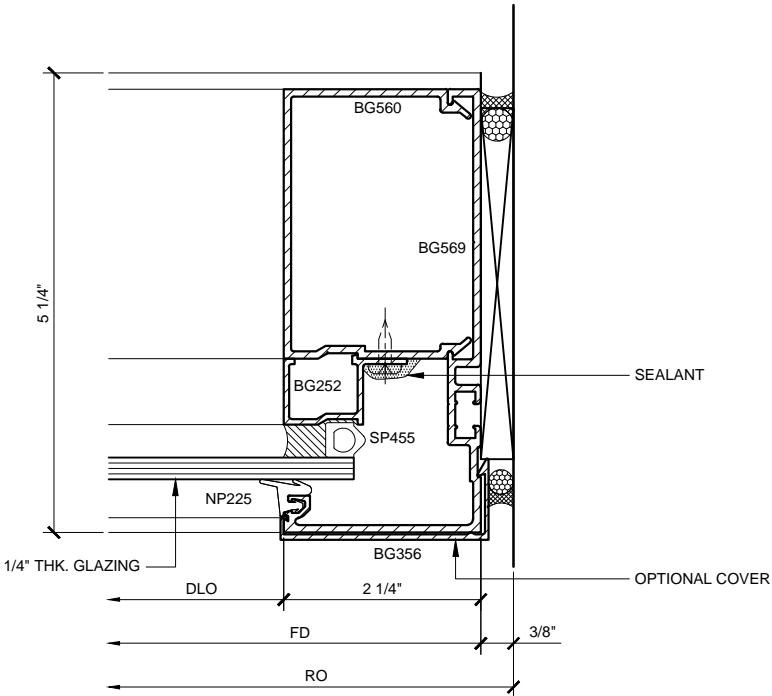
U.S. ALUMINUM  
WINDOW WALL - BG  
SERIES BG525  
SYSTEM DRAWINGS

Drawn By: RPD  
Date: 03/23/15  
Scale: AS NOTED  
File Name: BG525.dwg  
Sheet

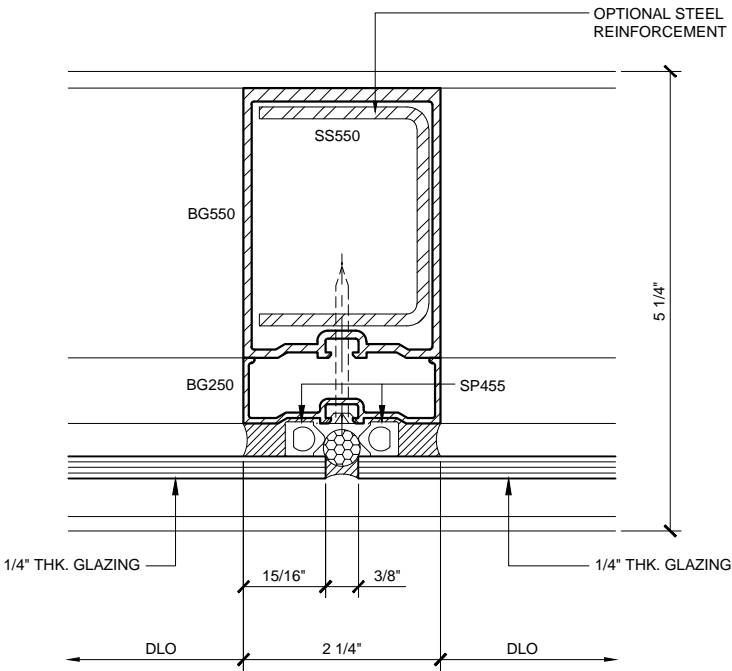
U.S. ALUMINUM WINDOW WALL SERIES BG525 SYSTEM



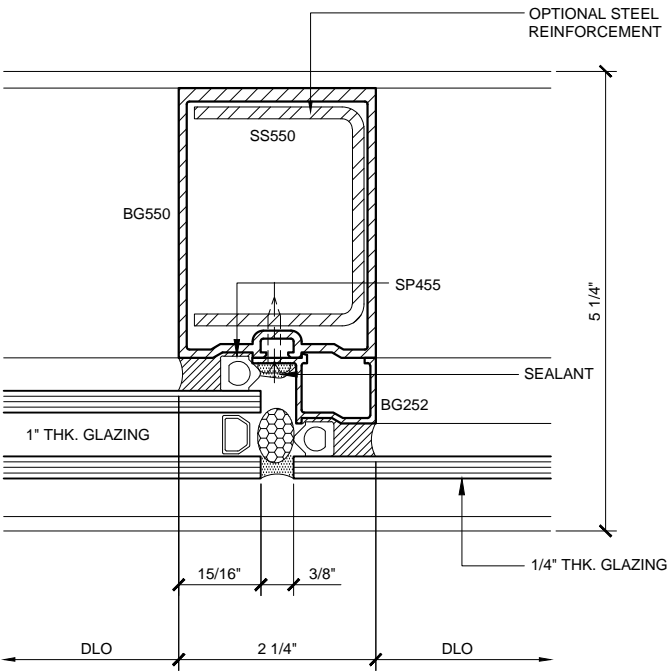
JAMB TRANSITION (54)  
BG525 SINGLE / DOUBLE GLAZED 1'-0"=1'-0"



JAMB TRANSITION w/ OPTIONAL FACE CAP (56)  
BG525 SINGLE / DOUBLE GLAZED 1'-0"=1'-0"



INTERMEDIATE VERT. TRANSITION (58)  
BG525 SINGLE / DOUBLE GLAZED 1'-0"=1'-0"



INTERMEDIATE VERT. TRANSITION (59)  
BG525 SINGLE / DOUBLE GLAZED 1'-0"=1'-0"

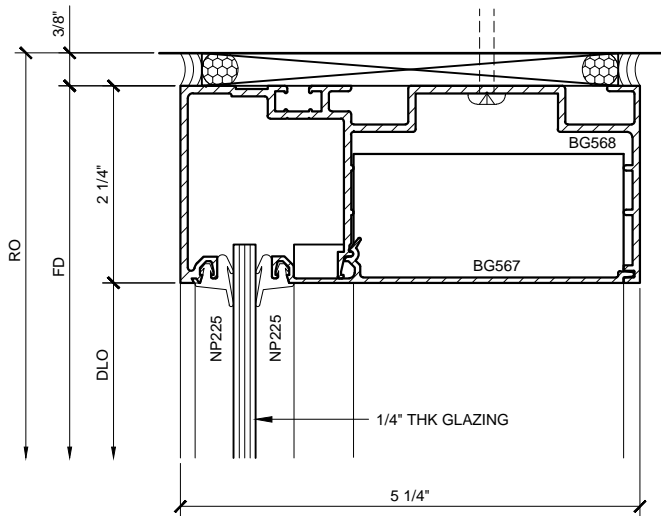
WINDOW WALL SERIES BG525 - 5 1/4" DEEP SYSTEM DETAILS

Revisions By:

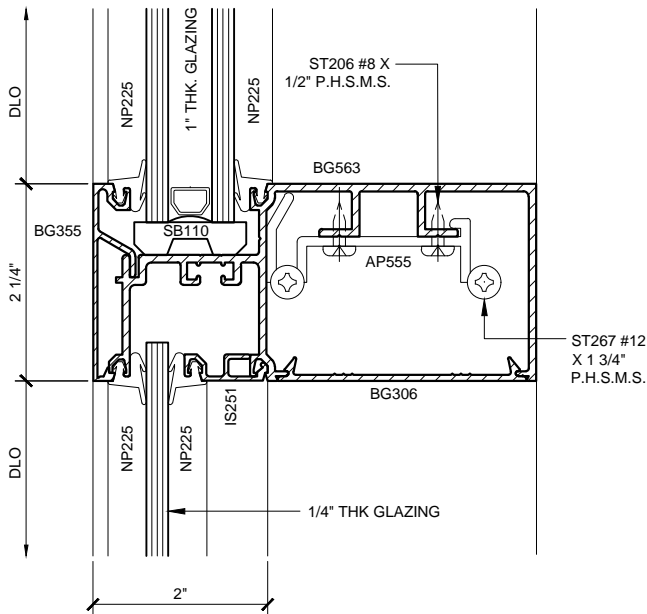
**CAL** ALUMINUM  
C.R. LAURENCE CO. ARCHITECTURAL PRODUCTS  
2503 E. Vernon Avenue, Los Angeles, CA 90058-1897  
PH: (800) 421-6144 FAX: (800) 587-7201 www.crlaurence.com

U.S. ALUMINUM  
WINDOW WALL - BG  
SERIES BG525  
SYSTEM DRAWINGS

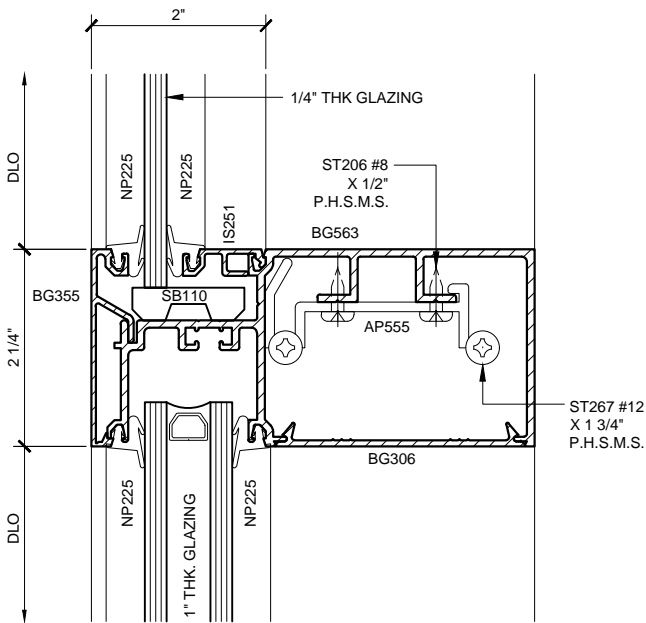
Drawn By: RPD  
Date: 03/23/15  
Scale: AS NOTED  
File Name: BG525.dwg  
Sheet



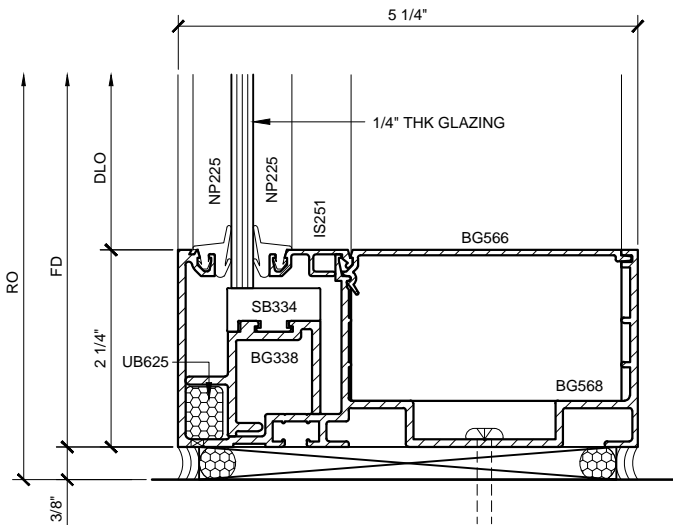
HEAD TRANSITION 60  
BG525 SINGLE / DOUBLE GLAZED 1'-0"=1'-0"



INTERMEDIATE HORIZ. TRANSITION 64  
BG525 SINGLE / DOUBLE GLAZED 1'-0"=1'-0"



INTERMEDIATE HORIZ. TRANSITION 62  
BG525 SINGLE / DOUBLE GLAZED 1'-0"=1'-0"



SILL TRANSITION 66  
BG525 SINGLE / DOUBLE GLAZED 1'-0"=1'-0"

WINDOW WALL SERIES BG525 - 5 1/4" DEEP SYSTEM DETAILS

Revisions By:



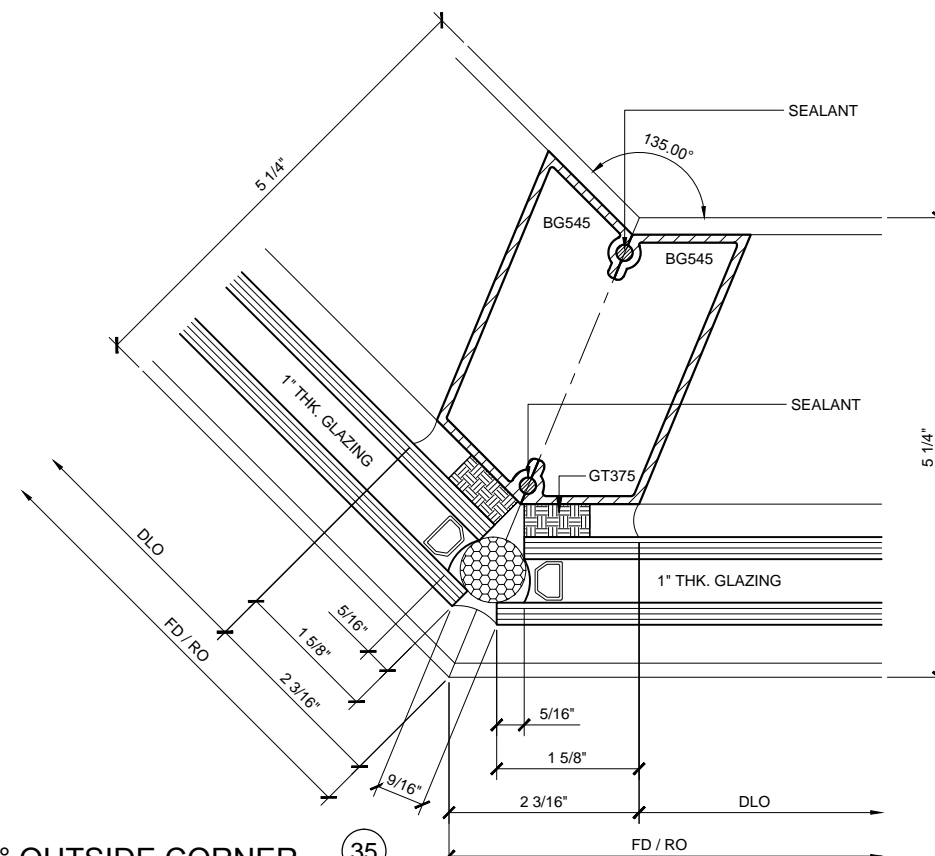
U.S. ALUMINUM  
WINDOW WALL - BG  
SERIES BG525  
SYSTEM DRAWINGS

Drawn By: RPD  
Date: 03/23/15  
Scale: AS NOTED  
File Name: BG525.dwg  
Sheet

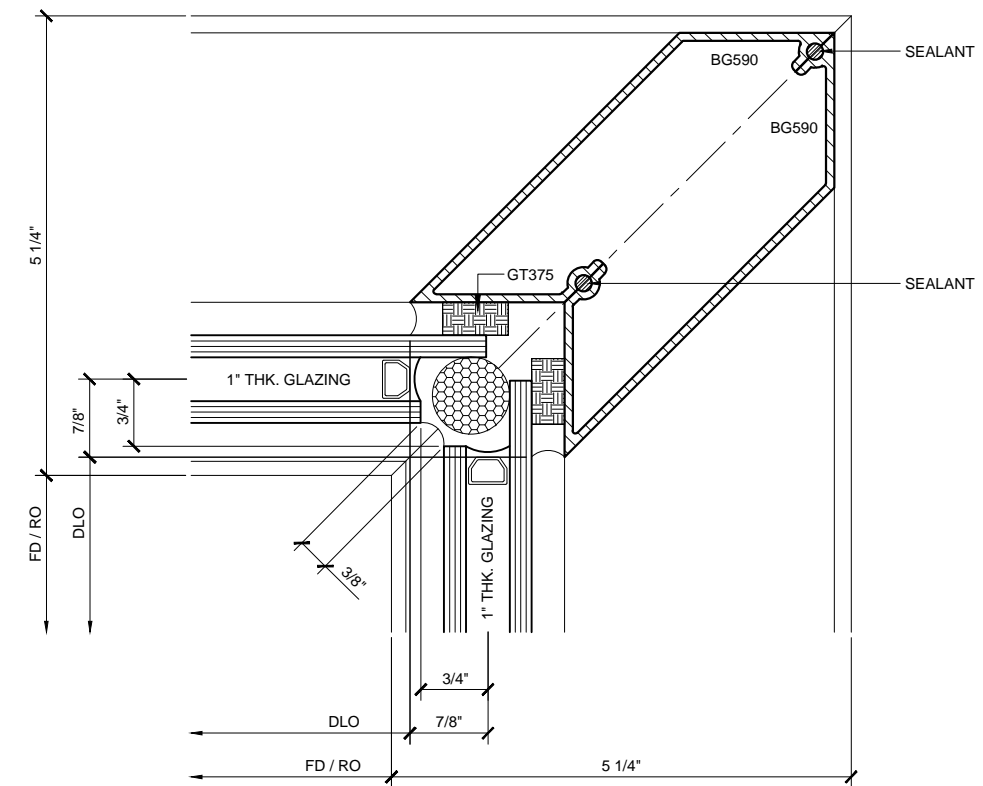


[illegible]

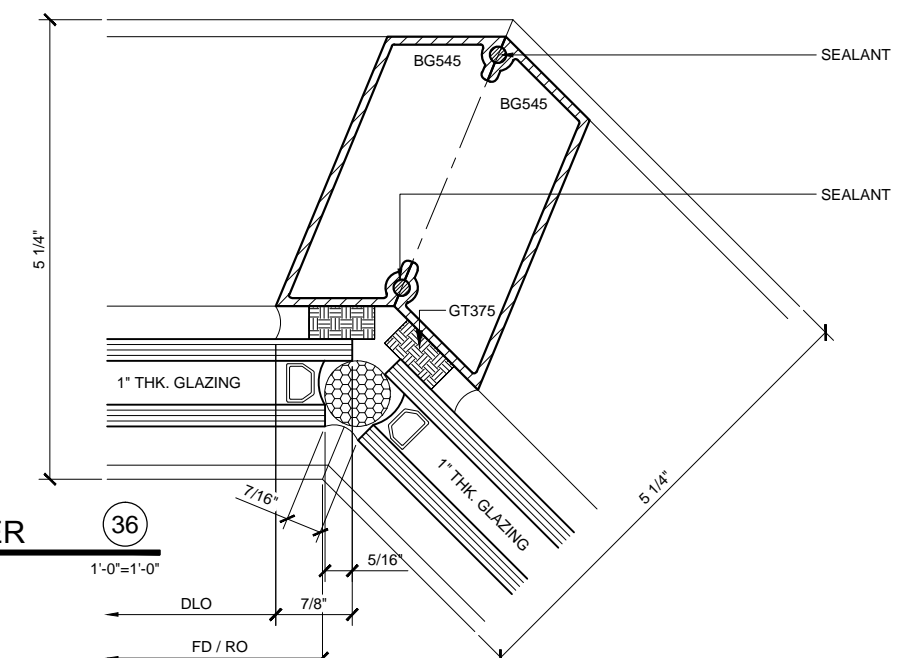
33

$$1'-0''=1'-0''$$


35

$$1'-0''=1'-0''$$


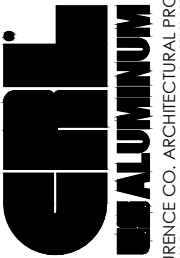
34

$$1'-0''=1'-0''$$


36

$$1'-0''=1'-0''$$

## Revisions By:



2503 E. Vernon Avenue, Los Angeles, CA 90058-1897  
PH (800)-421-6144 FX: 800-587-7501 [www.crlaurence.com](http://www.crlaurence.com)

Description:  
U.S. ALUMINUM  
WINDOW WALL - BG  
SERIES BG525  
SYSTEM DRAWINGS

RPD

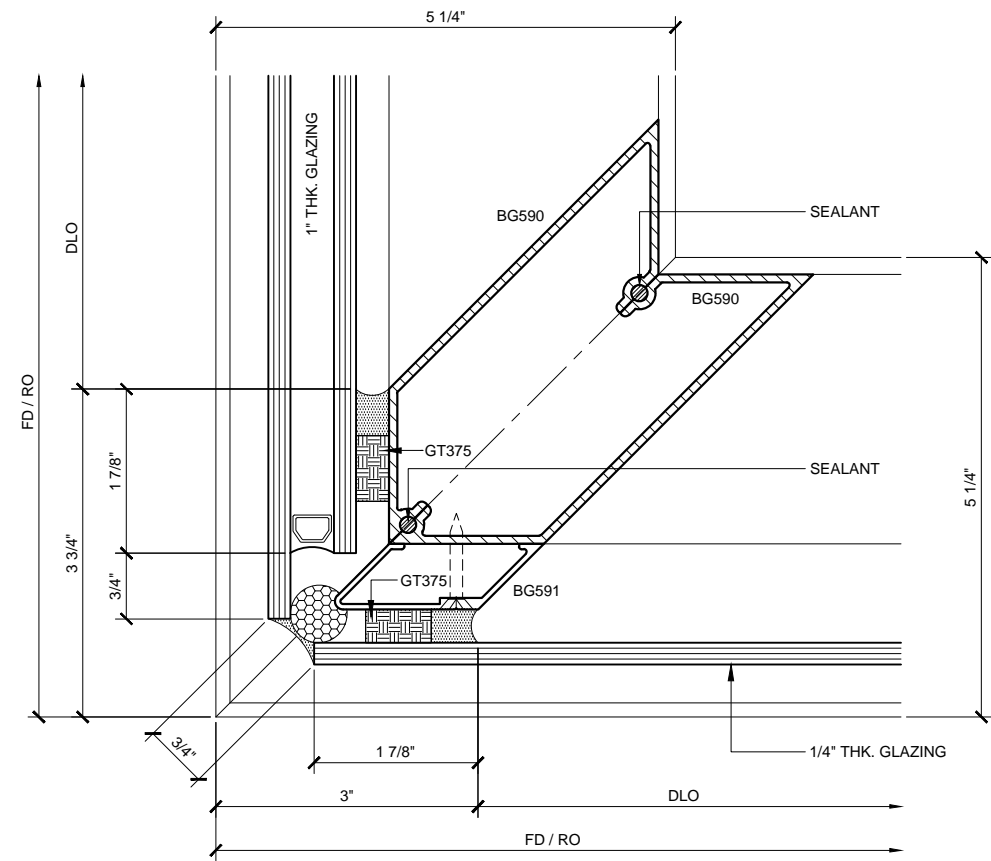
03/23/15

AS NOTED

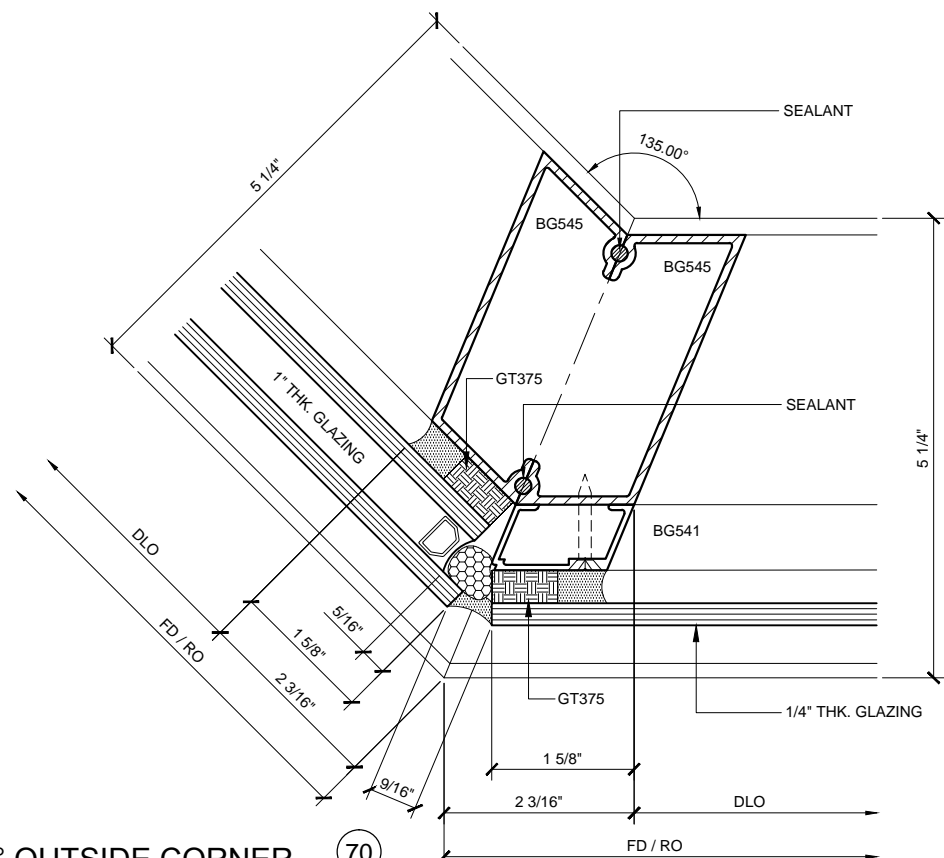
6525.dwg

**.06**

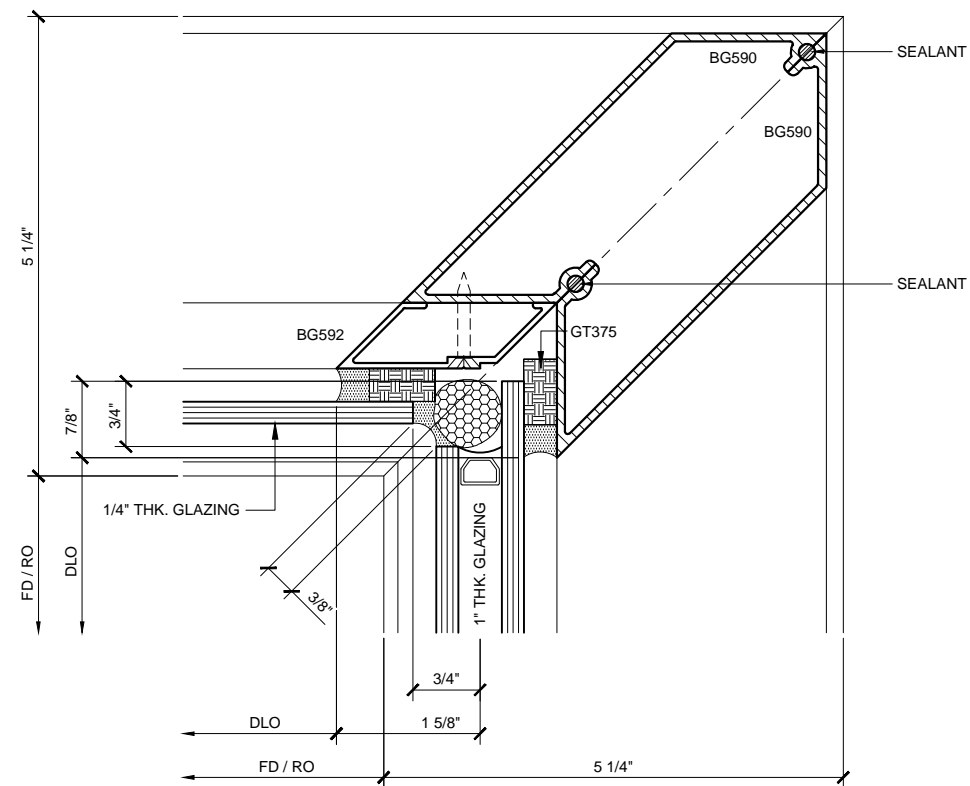
U.S. ALUMINUM WINDOW WALL SERIES BG525 SYSTEM



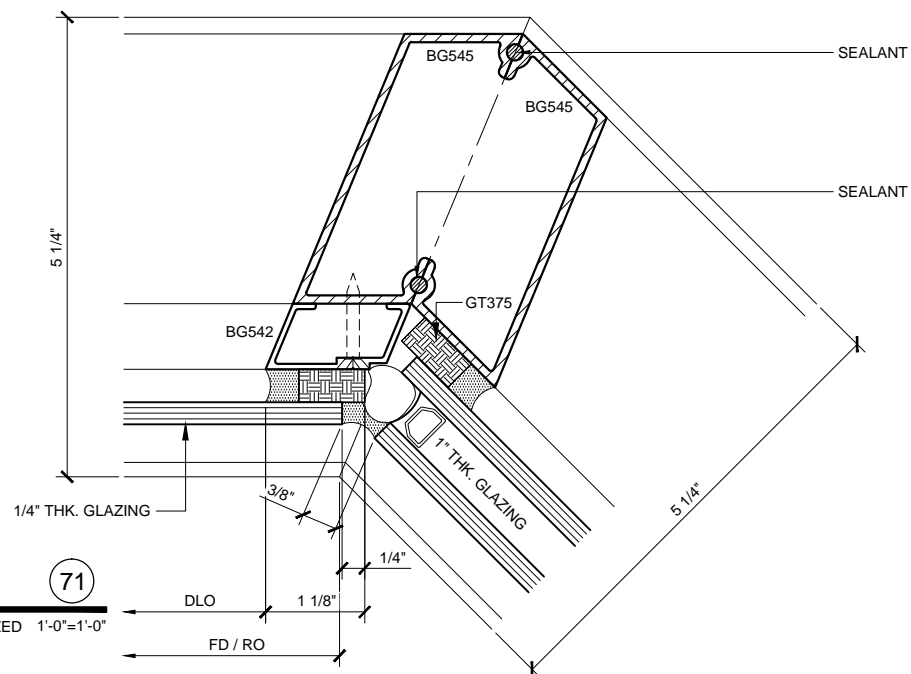
**90° OUTSIDE CORNER** (68)  
BG525 COMBINATION DOUBLE / SINGLE GLAZED 1'-0"=1'-0"



**135° OUTSIDE CORNER** (70)  
BG525 COMBINATION DOUBLE / SINGLE GLAZED 1'-0"=1'-0"



**90° INSIDE CORNER** (69)  
BG525 COMBINATION DOUBLE / SINGLE GLAZED 1'-0"=1'-0"



**135° INSIDE CORNER** (71)  
BG525 COMBINATION DOUBLE / SINGLE GLAZED 1'-0"=1'-0"

**WINDOW WALL SERIES BG525 - 5 1/4" DEEP SYSTEM DETAILS**

Revisions By:



U.S. ALUMINUM  
WINDOW WALL - BG  
SERIES BG525  
SYSTEM DRAWINGS

Drawn By: RPD  
Date: 03/23/15  
Scale: AS NOTED  
File Name: BG525.dwg  
Sheet

Technical drawing of a window assembly cross-section. The drawing shows a vertical window frame with a horizontal sash. Key components and dimensions are labeled:

- Dimensions:**
  - RO: 3/8"
  - FD: 2 3/4"
  - DLO: 1 3/4"
  - IM425: 1"
- Components:**
  - J500: Top horizontal frame member.
  - SEALANT: Applied to the top of the frame.
  - I-425: Vertical frame member.
  - NP225: Vertical frame member.
  - 1" THK. GLAZING: The glass pane.

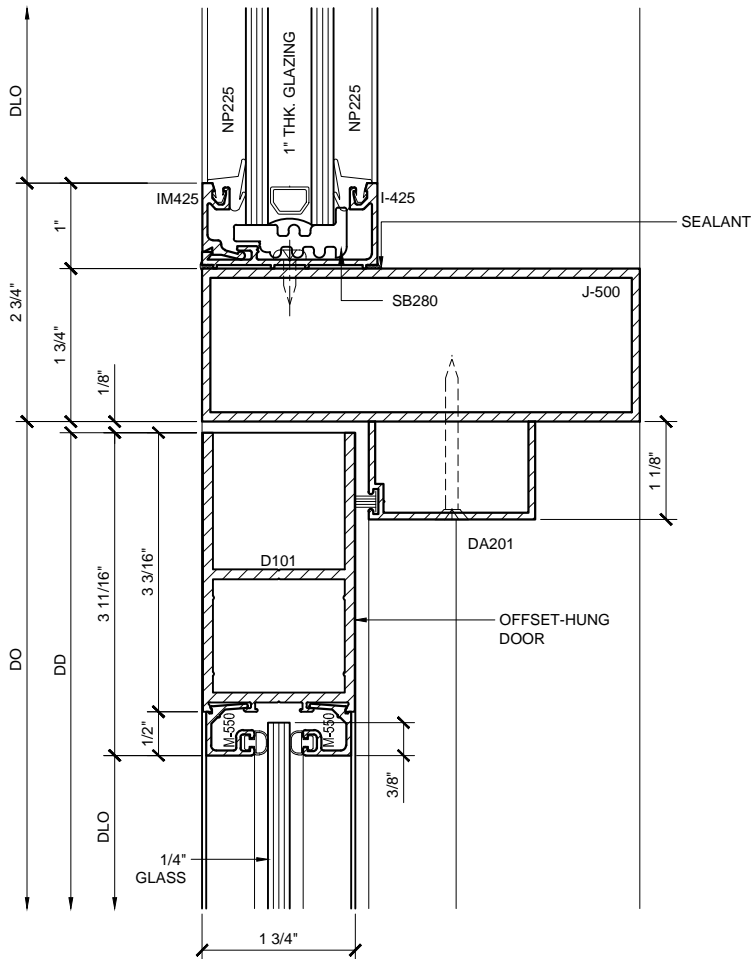
Technical drawing of a center-hung door assembly. The drawing shows a cross-section of the door and its hardware. Key dimensions and components are labeled:

- Dimensions:**
  - Overall width: 5 1/4"
  - Top panel width: 1 3/4"
  - Top panel height: 7/16"
  - Door height (DLO): 3 11/16"
  - Door height (DD): 3 3/16"
  - Door height (FD): 1 1/16"
  - Door height (RO): 1 1/16"
  - Door height (DLO): 1 1/2"
  - Door height (DD): 1 1/16"
  - Door height (FD): 1 1/16"
  - Door height (RO): 1 1/16"
  - Door height (DLO): 1 1/2"
  - Door height (DD): 1 1/16"
  - Door height (FD): 1 1/16"
  - Door height (RO): 1 1/16"
  - Door height (DLO): 1 1/2"
  - Door height (DD): 1 1/16"
  - Door height (FD): 1 1/16"
  - Door height (RO): 1 1/16"
- Components:**
  - 1/4" GLASS
  - CENTER-HUNG DOOR
  - CRL DUAL PURPOSE PIVOT
  - OPTIONAL SWEEP
  - TH400
  - BW250
  - D101
  - 4"

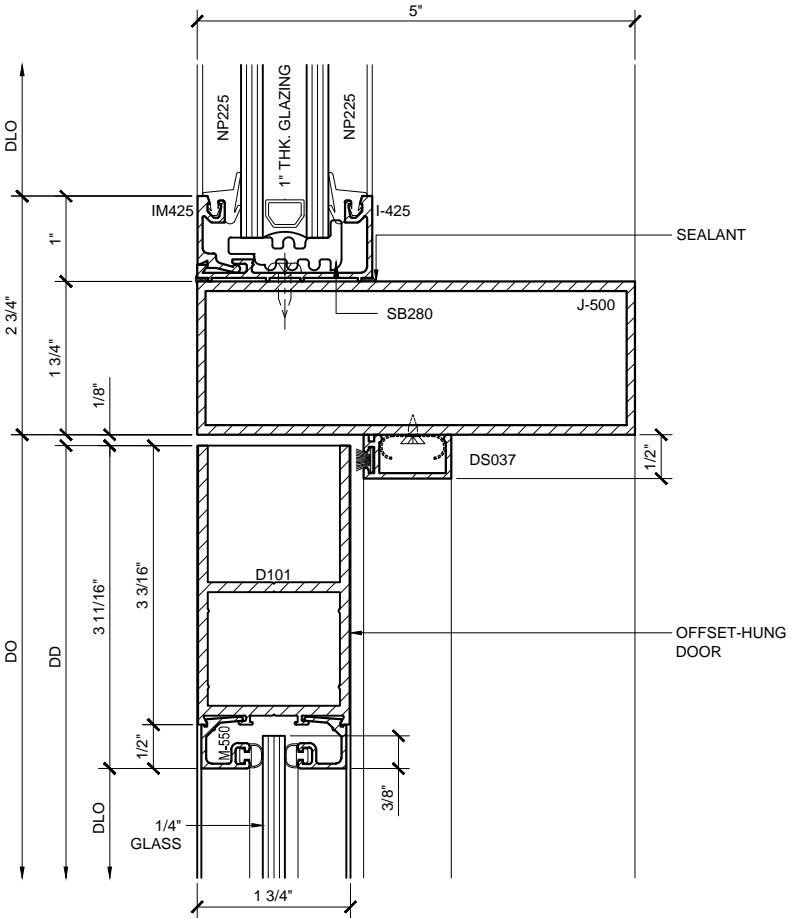
**CAL**  
**ALUMINUM**

C.R. LAURENCE CO. ARCHITECTURAL PRODUCTS  
2503 E. Vernon Avenue, Los Angeles, CA 90058-1897  
PH (800)-421-6144 FX: (800)-587-7301 [www.clrcoincense.com](http://www.clrcoincense.com)

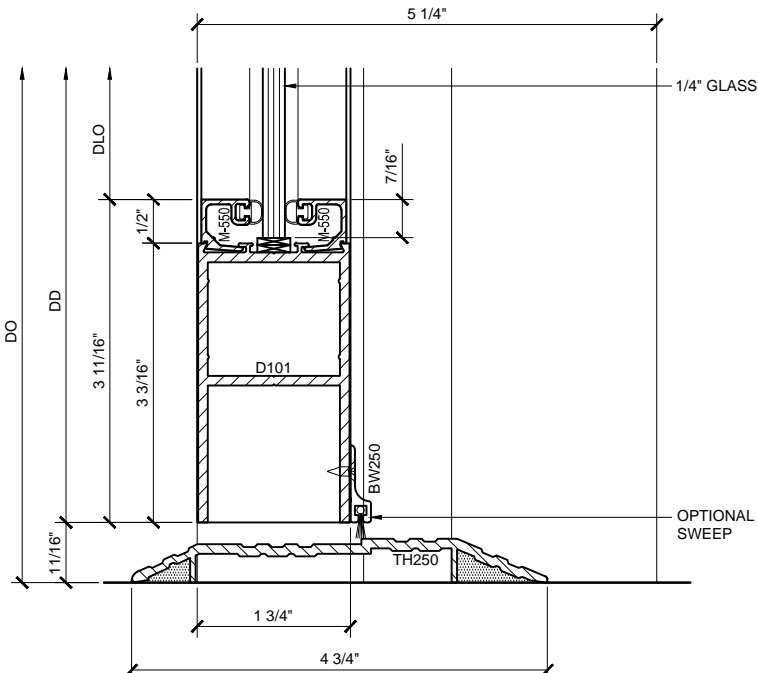
Drawn By:	RPD
Date:	03/23/15
Scale:	AS NOTED
File Name:	BG525.dwg
	Sheet



**DOOR HEAD DETAIL** (45)  
BG525 DOUBLE GLAZED  
OFFSET-HUNG DOOR  
1'-0"=1'-0"



**DOOR HEAD DETAIL** (46)  
BG525 DOUBLE GLAZED  
OFFSET-HUNG DOOR  
1'-0"=1'-0"



**DOOR SILL DETAIL** (79)  
BG525 DOUBLE GLAZED  
OFFSET-HUNG DOOR  
1'-0"=1'-0"

WINDOW WALL SERIES BG525 - 5 1/4" DEEP SYSTEM DETAILS

Revisions By:

CAL

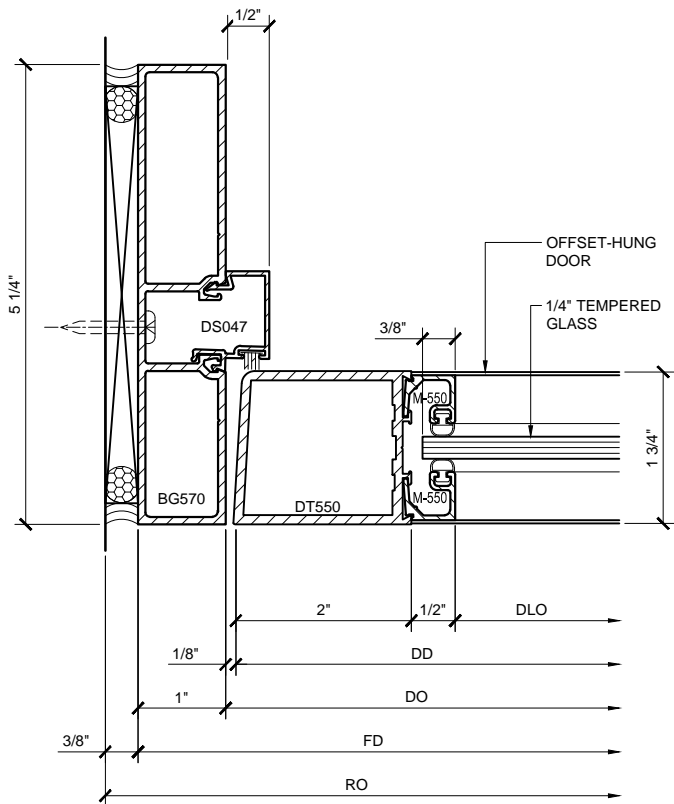
ALUMINUM

C.R. LAURENCE CO. ARCHITECTURAL PRODUCTS  
2503 E. Vernon Avenue, Los Angeles, CA 90058-1897  
PH (800) 421-6144 FAX (800) 587-7201 www.crlaurence.com

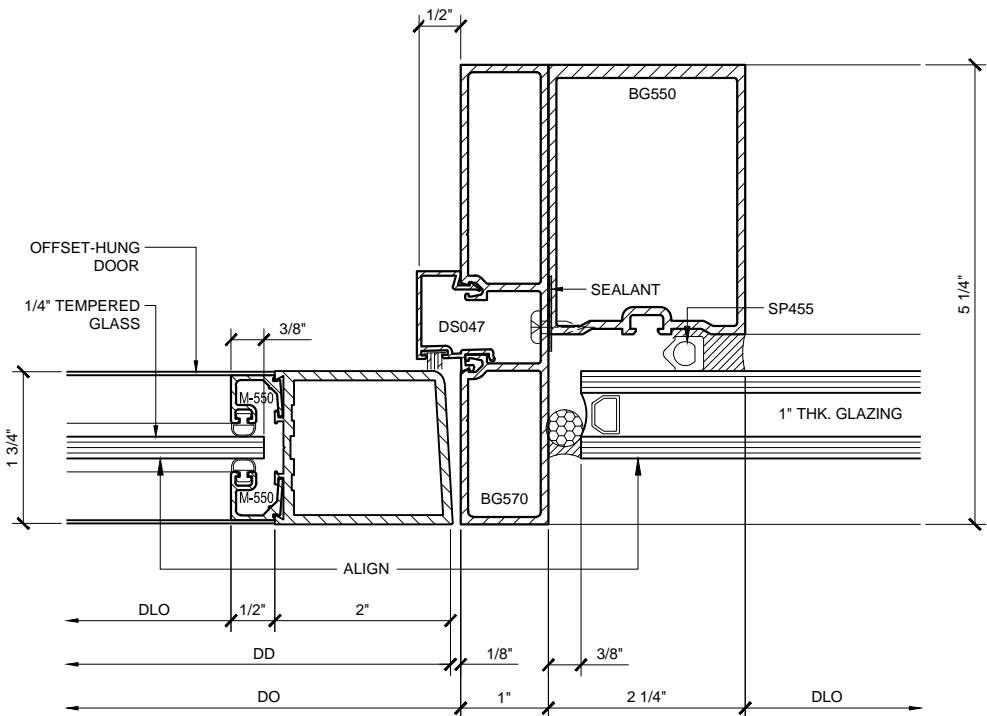
Discription:  
U.S. ALUMINUM  
WINDOW WALL - BG  
SERIES BG525  
SYSTEM DRAWINGS

Drawn By: RPD  
Date: 03/23/15  
Scale: AS NOTED  
File Name: BG525.dwg  
Sheet

3.10



DOOR JAMB DETAIL 43  
BG525 DOUBLE GLAZED  
OFFSET-HUNG DOOR  
1'-0"=1'-0"



DOOR JAMB DETAIL 44  
BG525 DOUBLE GLAZED  
OFFSET-HUNG DOOR  
1'-0"=1'-0"

Revisions By:

CAL

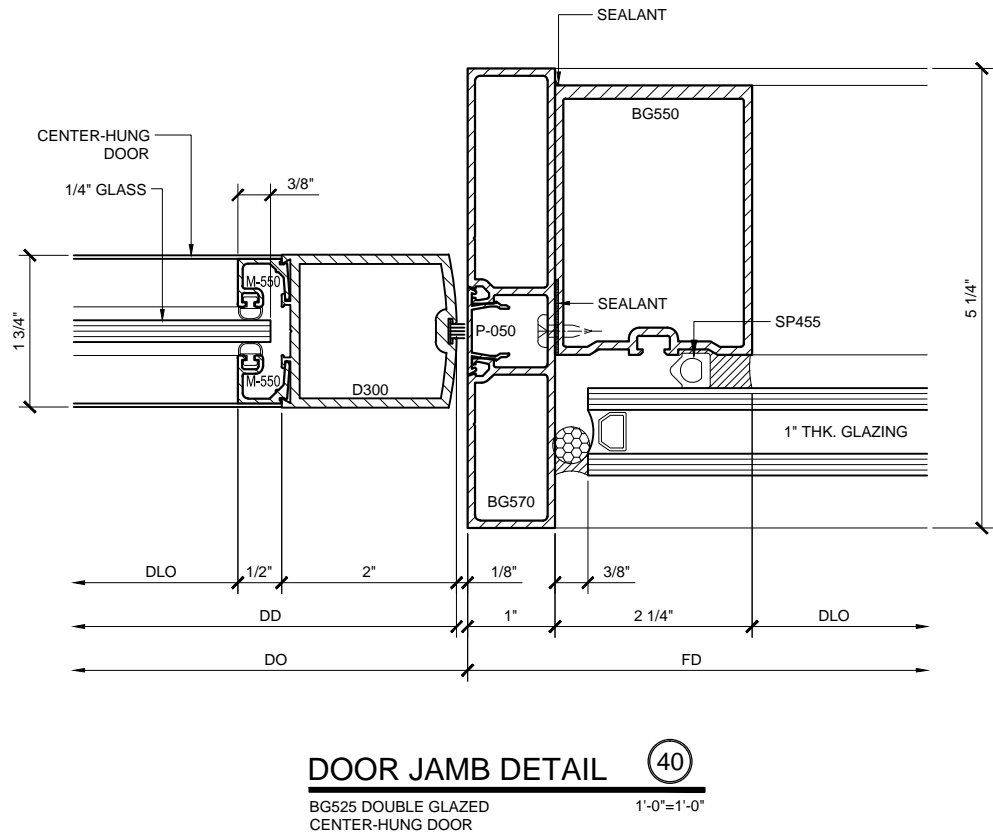
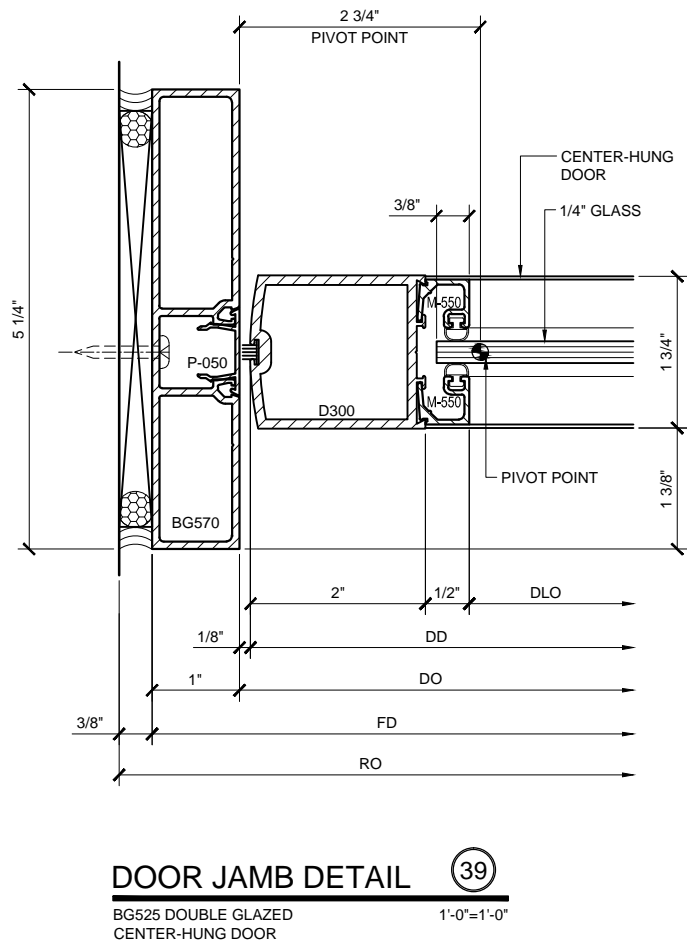
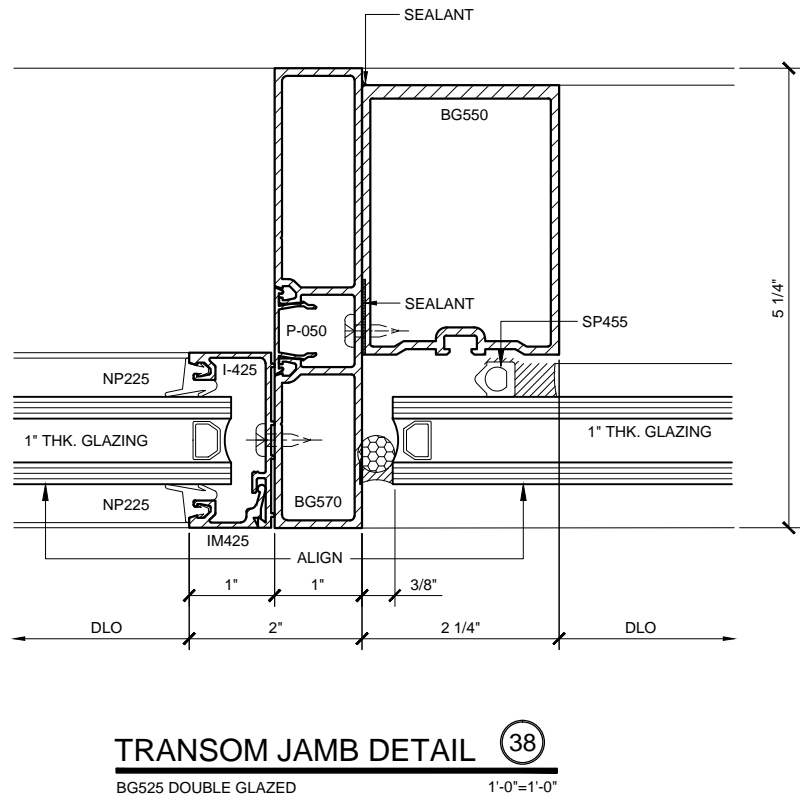
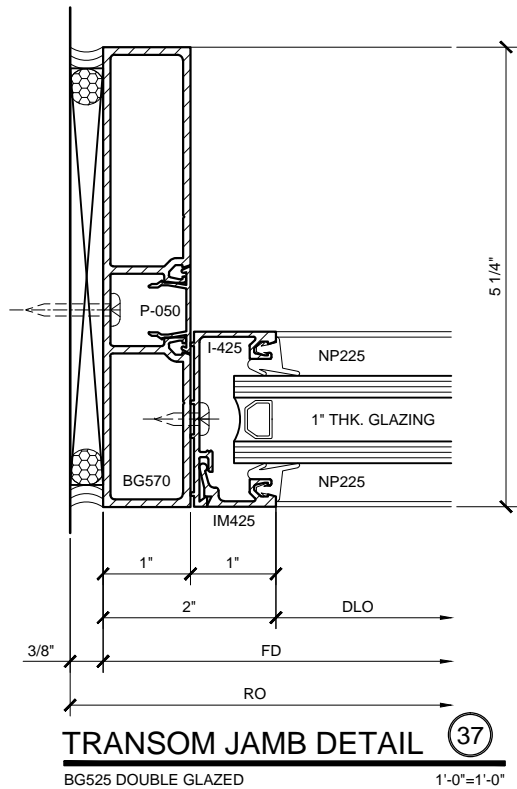
U.S. ALUMINUM

C.R. LAURENCE CO. ARCHITECTURAL PRODUCTS  
2503 E. Vernon Avenue, Los Angeles, CA 90058-1897  
PH: (800) 421-6144 FX: (800) 587-7201 www.crlaurence.com

Discription:  
U.S. ALUMINUM  
WINDOW WALL - BG  
SERIES BG525  
SYSTEM DRAWINGS

Drawn By: RPD  
Date: 03/23/15  
Scale: AS NOTED  
File Name: BG525.dwg  
Sheet

3.11



WINDOW WALL SERIES BG525 - 5 1/4" DEEP SYSTEM DETAILS

Revisions By:

U.S. ALUMINUM

C.R. LAURENCE CO. ARCHITECTURAL PRODUCTS  
2503 E. Vernon Avenue, Los Angeles, CA 90058-1897  
PH (800) 421-6144 FX (800) 587-7201 WWW.CRLAURENCE.COM

Discription:  
U.S. ALUMINUM  
WINDOW WALL - BG  
SERIES BG525  
SYSTEM DRAWINGS

Drawn By: RPD  
Date: 03/23/15  
Scale: AS NOTED  
File Name: BG525.dwg  
Sheet

3.09