



STORM FRONT

HURRICANE RESISTANT HORIZONTAL SLIDING WINDOW - SERIES IW8200

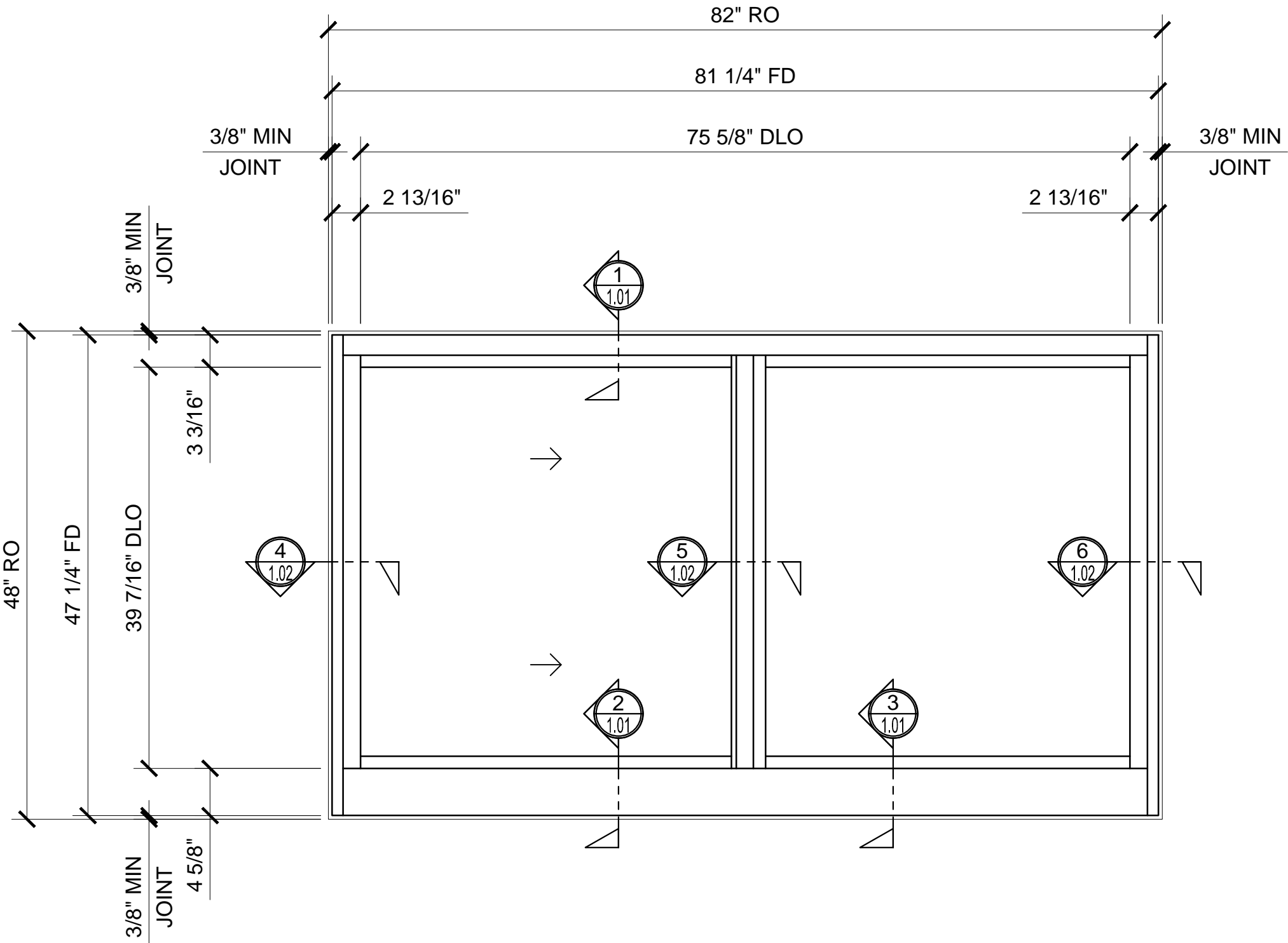
GLASS SIZING NOTE:  
REFERENCE U.S. ALUMINUM  
CATALOGS AND WEBSITE'S  
LOAD CHARTS FOR SIZING  
GUIDELINES.

1" = 1'-0"

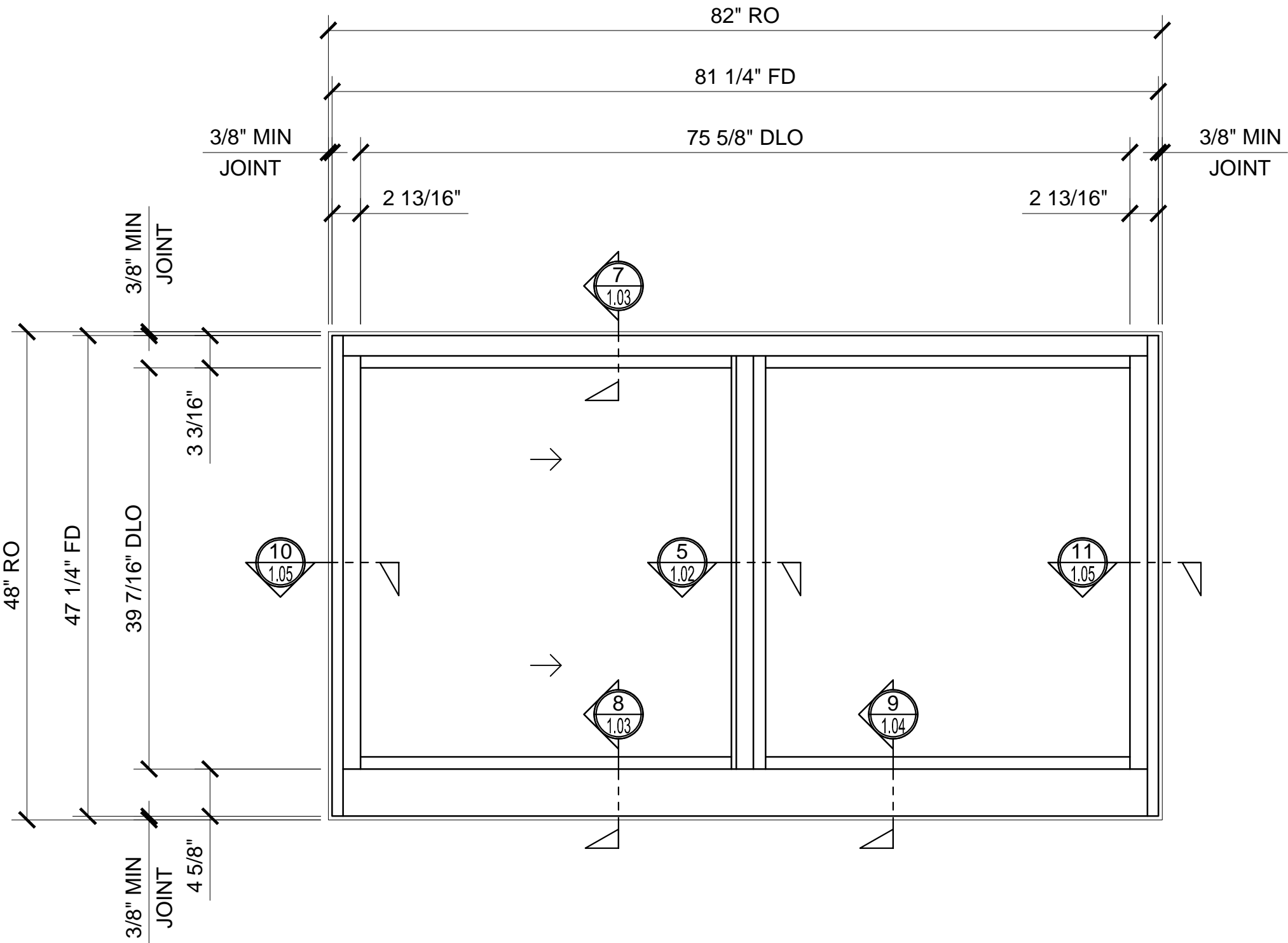
IW8200 SERIES SPECIFICATIONS

The Series IW8200 Hurricane Resistant Horizontal Sliding Window offers that rare combination of smooth operation, durability, and toughness to meet stringent requirements of the Miami / Dade County Protocols TAS 201, 202, and 203 for maximum protection from high winds and wind-borne debris.

- 4 1/2" (114) Deep Frame to Match Typical Building Conditions
- Tested to AAMA CW60
- Accepts 1-7/32" (31) Glazing
- Thermally Insulated - NFRC Certified
- U-Factor as low as 0.34
- Choice of Block or Fin Frame
- Dry Glazed
- Self-Locking Latch and Tandem Adjustable Rollers for Ease of Operation
- Accessories Such as Screens, Mulling Bars, Subsills, Head and Jamb Channels are Available
- Available in an Array of Architectural Coatings and Anodized Finishes



SERIES IW8200 HORIZONTAL SLIDING WINDOW ELEVATION - BLOCK INSTALL



SERIES IW8200 HORIZONTAL SLIDING WINDOW ELEVATION - FIN INSTALL

STANDARD ABBREVIATIONS

- RO ROUGH OPENING
- FD FRAME DIMENSION
- DLO DAYLIGHT OPENING
- DO DOOR OPENING
- DD DOOR DIMENSION
- SMC SURFACE MOUNTED CLOSER
- OHCC OVERHEAD CONCEALED CLOSER

Revisions By:



Discription:  
CRL STORM FRONT  
HURRICANE RESISTANT  
HORIZONTAL SLIDING WINDOW  
SERIES IW8200  
FOR 1-7/32" GLASS

Drawn By: TMG

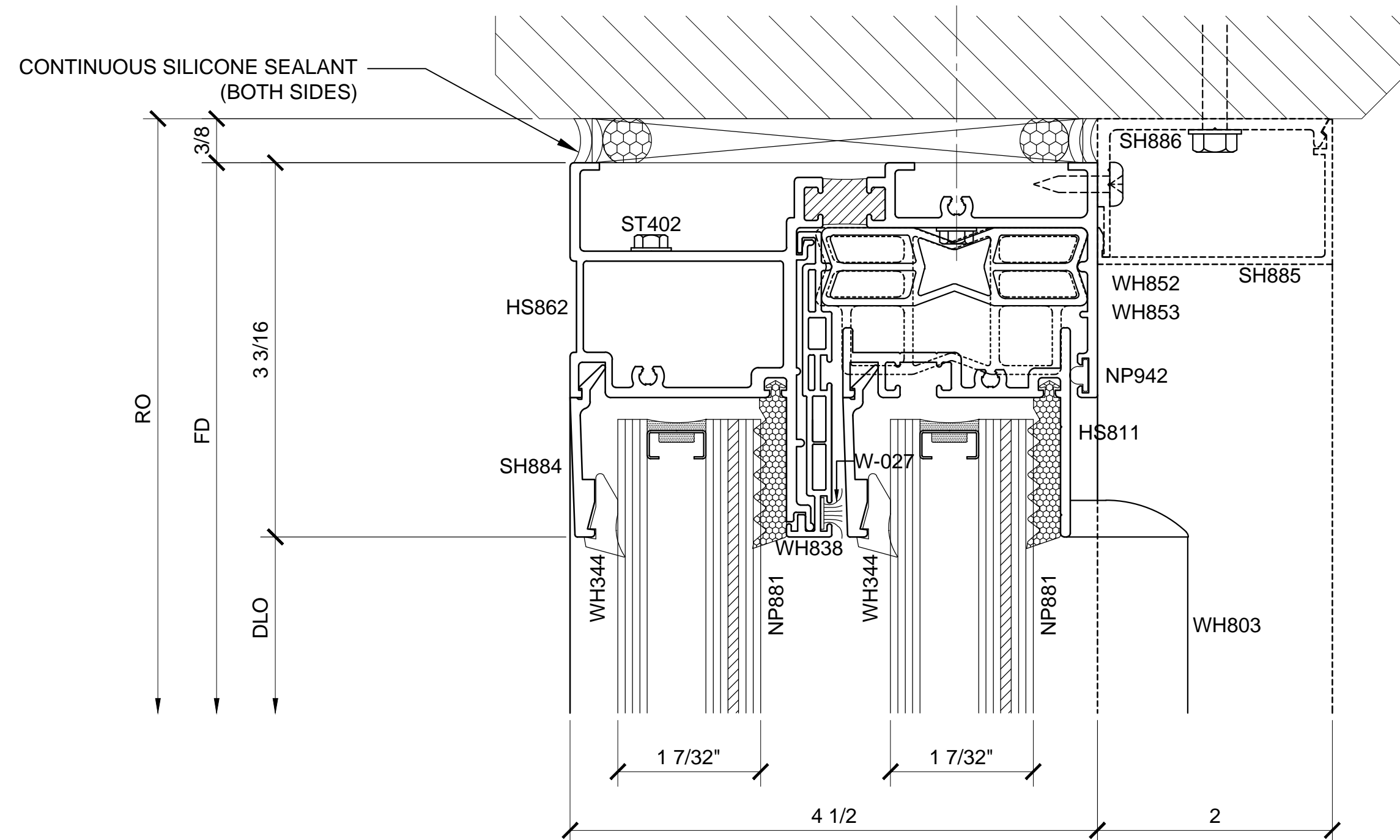
Date: 06/26/15

Scale: AS NOTED

File Name:

IW8200.dwg

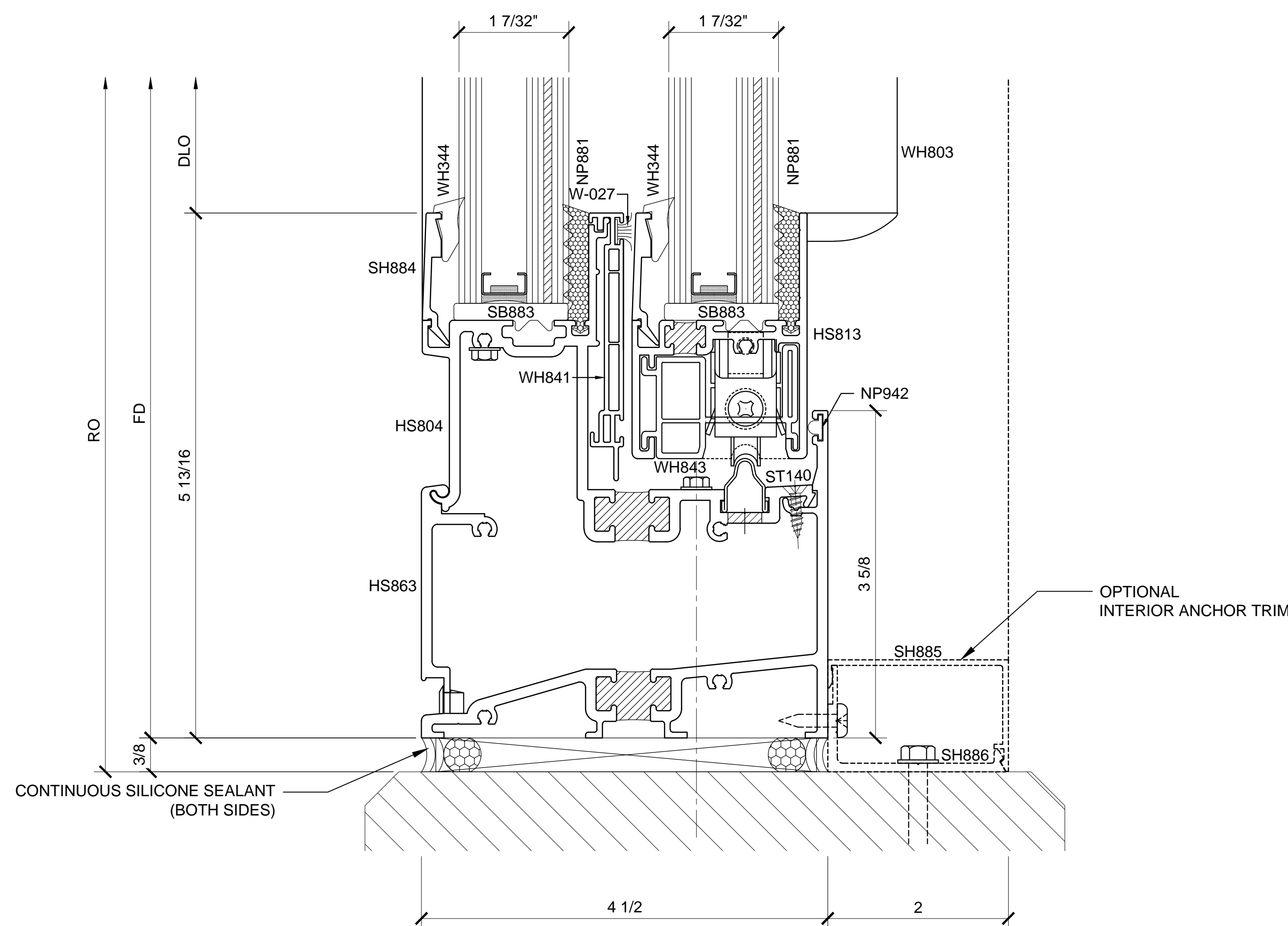
Sheet



**① SECTION DETAIL AT HEAD**

ARCH REF: N/A

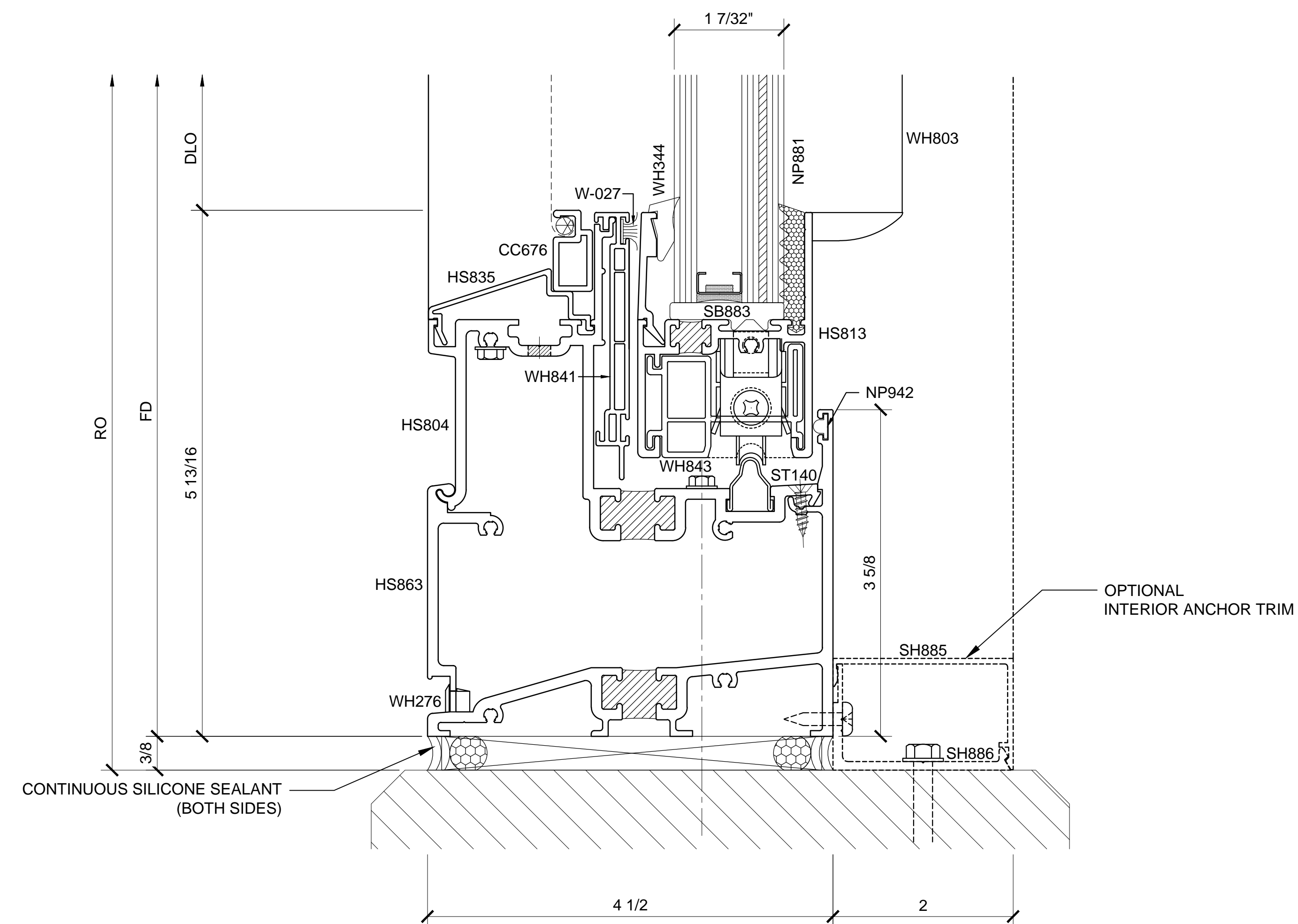
1'-0" = 1'-0"



**② SECTION DETAIL AT SILL**

ARCH REF: N/A

1'-0" = 1'-0"



**③ SECTION DETAIL AT SILL**

ARCH REF: N/A

1'-0" = 1'-0"

# HURRICANE RESISTANT HORIZONTAL SLIDING WINDOW - IW8200 SERIES DETAILS - BLOCK INSTALL

Revisions By:

**CRL**  
**ALUMINUM**  
C.R. LAURENCE CO. ARCHITECTURAL PRODUCTS  
2503 E. Vernon Avenue, Los Angeles, CA 90058-1897  
PH (800) 421-6144 FX 800-587-7301 www.crlaurence.com

Description:  
CRL STORM FRONT  
HURRICANE RESISTANT  
HORIZONTAL SLIDING WINDOW  
SERIES IW8200  
FOR 1-7/32" GLASS

Drawn By: TMG

Date: 06/26/15

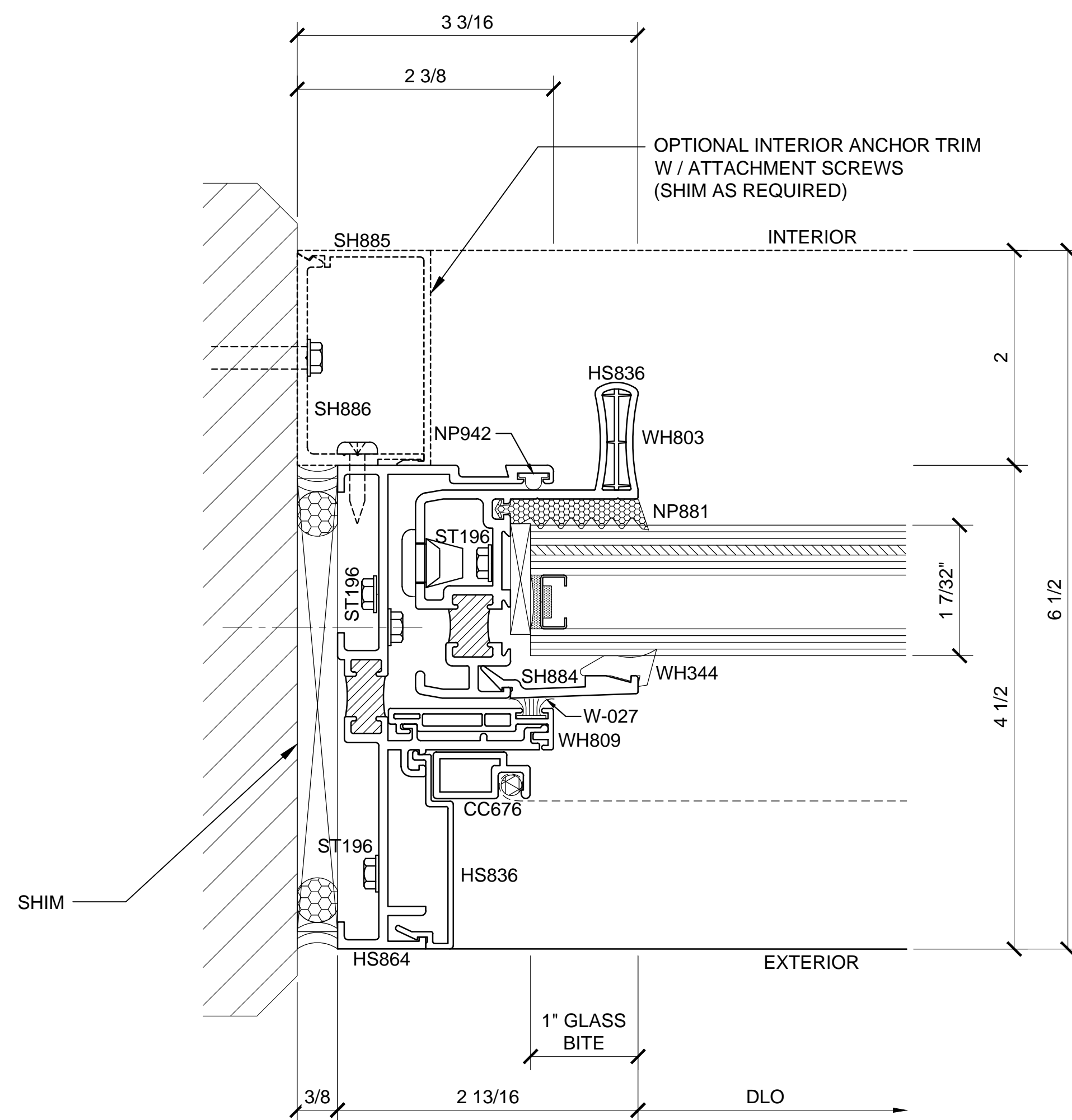
Scale: AS NOTED

File Name:

IW8200.dwg

Sheet

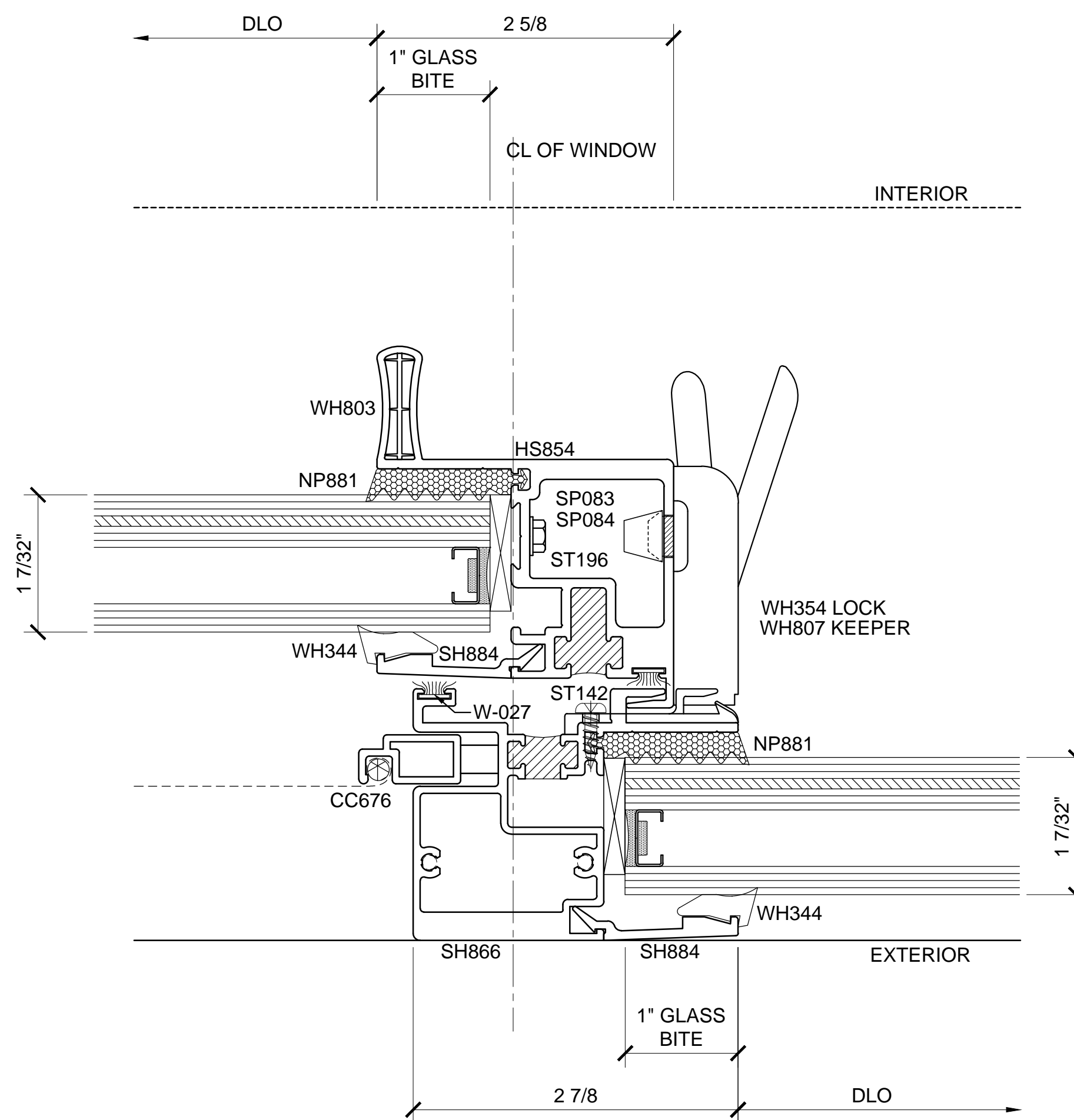
1.01



④ SECTION DETAIL AT JAMB

ARCH REF: N/A

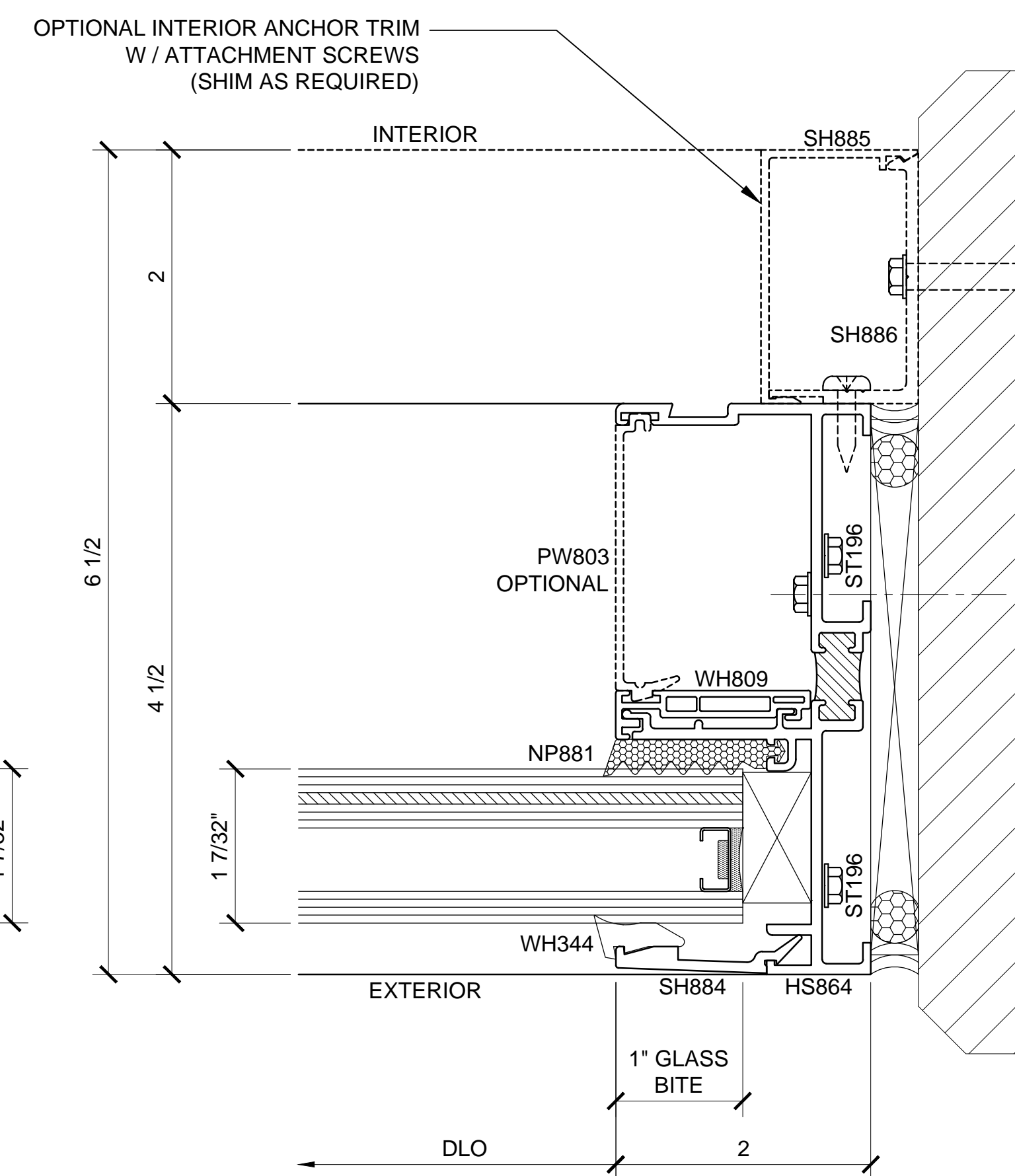
1'-0"=1'-0"



⑤ SECTION DETAIL AT JAMB

ARCH REF: N/A

1'-0"=1'-0"



⑥ SECTION DETAIL AT JAMB

ARCH REF: N/A

1'-0"=1'-0"

# HURRICANE RESISTANT HORIZONTAL SLIDING WINDOW - IW8200 SERIES DETAILS - BLOCK INSTALL

Revisions By:



Discription:  
CRL STORM FRONT  
HURRICANE RESISTANT  
HORIZONTAL SLIDING WINDOW  
SERIES IW8200  
FOR 1-7/32" GLASS

Drawn By: TMG

Date: 06/26/15

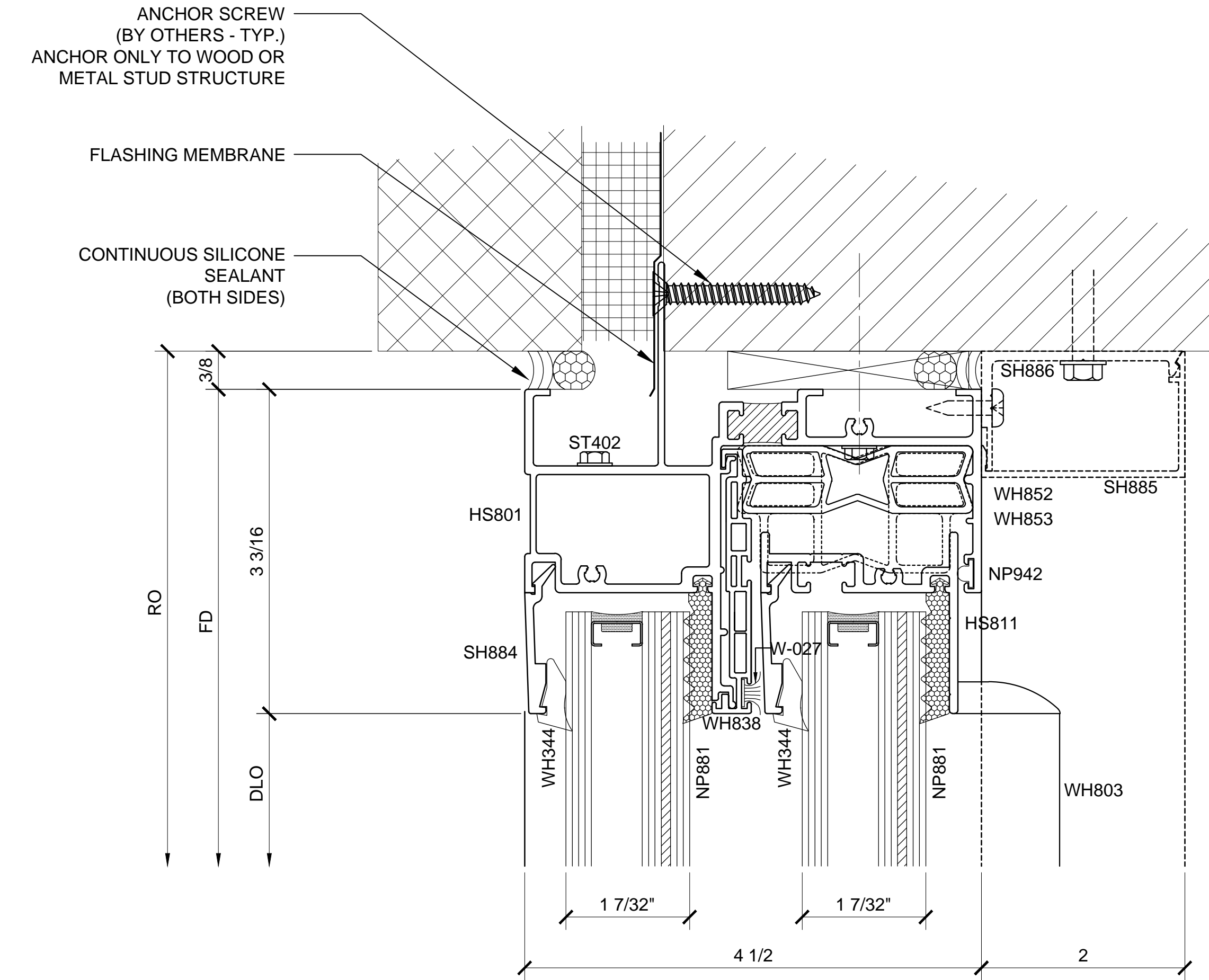
Scale: AS NOTED

File Name:

IW8200.dwg

Sheet

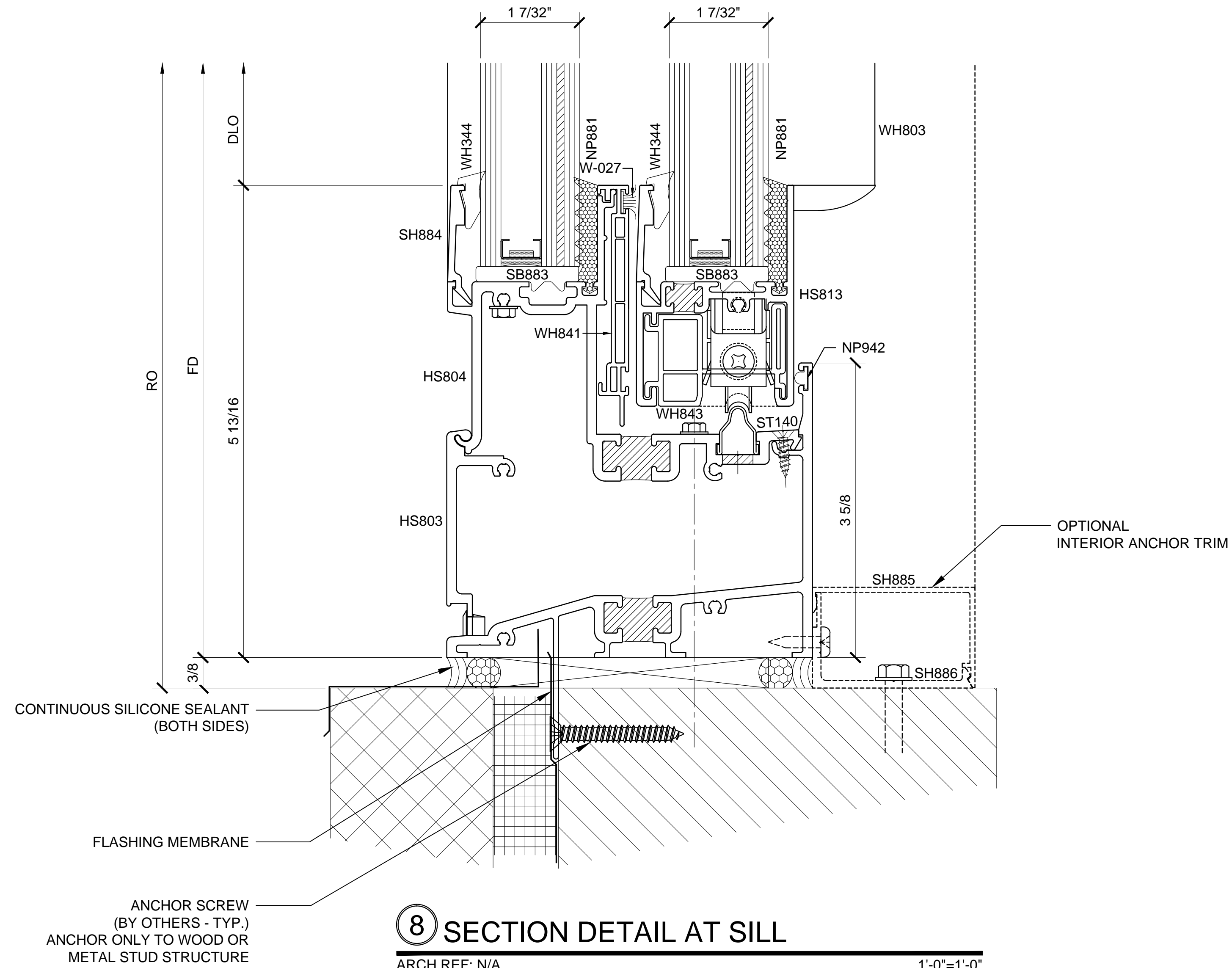
1.02



**7 SECTION DETAIL AT HEAD**

ARCH REF: N/A

1'-0"=1'-0"



**8 SECTION DETAIL AT SILL**

ARCH REF: N/A

1'-0"=1'-0"

# HURRICANE RESISTANT HORIZONTAL SLIDING WINDOW - IW8200 SERIES DETAILS - FIN FRAME INSTALL

Revisions By:



Discription:  
CRL STORM FRONT  
HURRICANE RESISTANT  
HORIZONTAL SLIDING WINDOW  
SERIES IW8200  
FOR 1-7/32" GLASS

Drawn By: TMG

Date: 06/26/15

Scale: AS NOTED

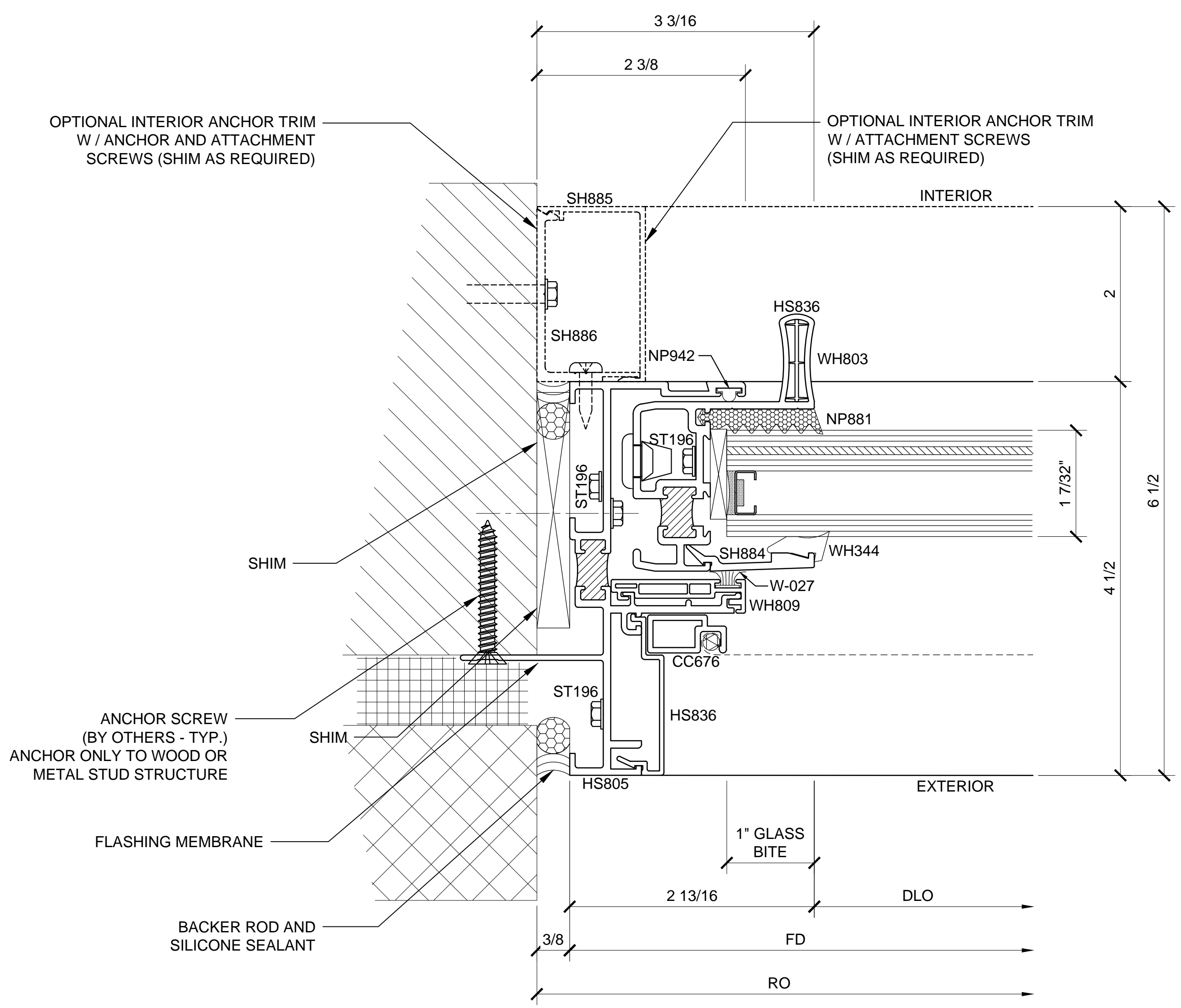
File Name:

IW8200.dwg

Sheet

1.03



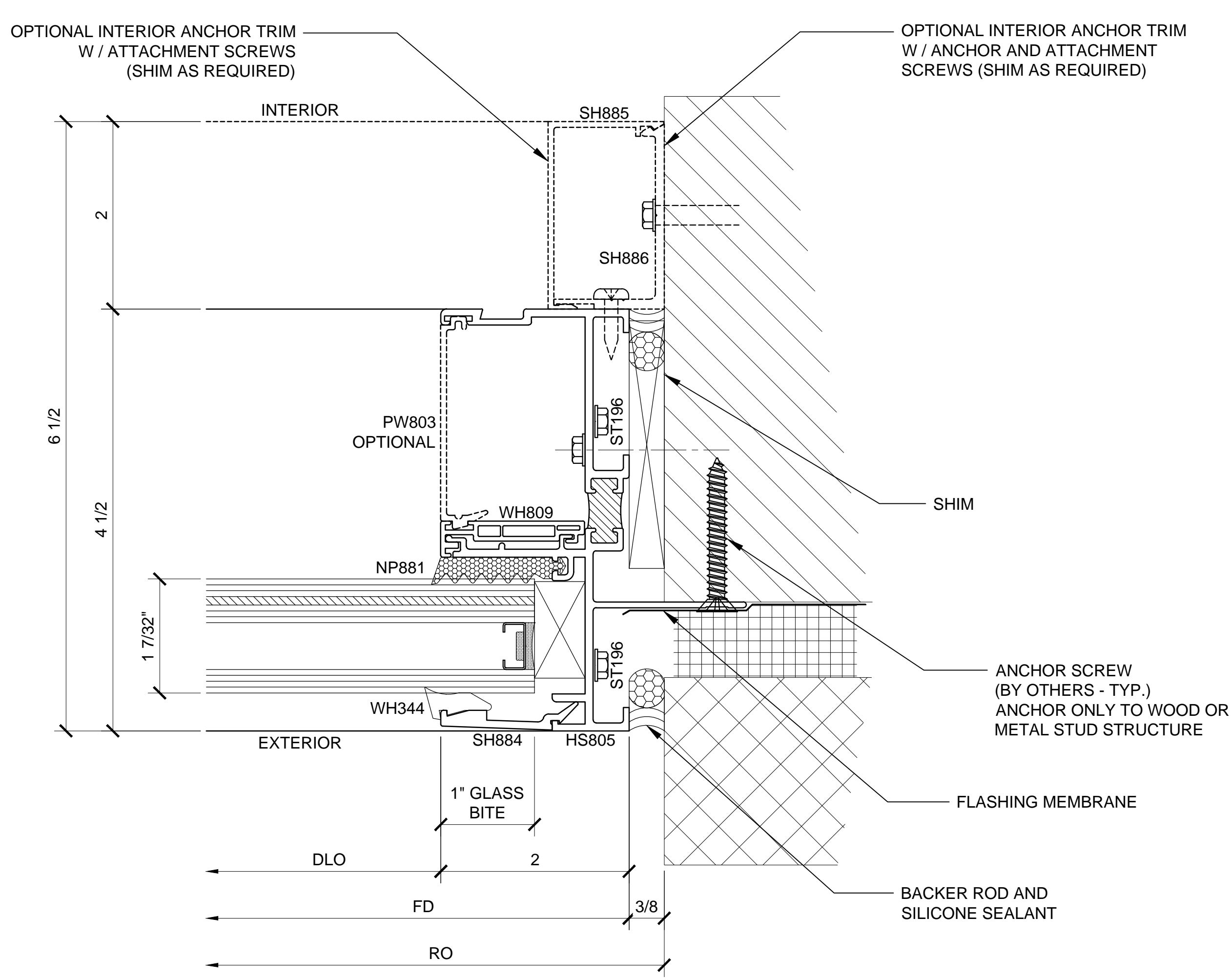


10

SECTION DETAIL AT JAMB

ARCH REF: N/A

1'-0"=1'-0"



11

SECTION DETAIL AT JAMB

ARCH REF: N/A

1'-0"=1'-0"